



**MARLBOROUGH  
DISTRICT COUNCIL**



**Information Package  
Regulatory Department  
26 August 2021**





# Contents

<b>Environmental Science &amp; Monitoring .....</b>	<b>1</b>
<b>Biosecurity (Pest Management) .....</b>	<b>1</b>
<b>Environmental Science .....</b>	<b>6</b>
<b>Marlborough Landscape Group .....</b>	<b>37</b>
<b>Building Control Group .....</b>	<b>42</b>
<b>Alcohol Licensing .....</b>	<b>45</b>
<b>Compliance Group .....</b>	<b>53</b>
<b>Resource Consents Section .....</b>	<b>59</b>
<b>Resource Consent Approvals Under Delegated Authority .....</b>	<b>61</b>

# Environmental Science & Monitoring

---

## Biosecurity (Pest Management)

Reporting Period (24/05/2021 – 25/06/2021)

RPMP Programmes Operative in this Period

(Report prepared by Liam Falconer, Rob Simons and Jono Underwood)

### Rooks

(E315-003-027)

One report was received that a Rook may have been heard around the MT Vernon carpark at the top of Redwood Street. To date we have not had any confirmed sightings in the area, Biosecurity officers will continue to make enquires with adjoining landowners and undertake surveillance in the area to confirm presents or absents.

### Wallabies

(E315-003-033)

Council received multiple reports of a dead Wallaby on the roadside in the Whangamoas. Council responded immediately to recover the carcass of the Wallaby. Biosecurity officers were able to undertake an autopsy of the carcass to confirm its origin. It was found to be linked to the known population around South Canterbury. The Wallaby had been deceased for a period of time. The carcass had clear signs that it had been interacted with by humans. Council is confident that this Wallaby was dumped on the roadside.



Biosecurity Officer Hayden Nott undertaking an autopsy to confirm the origin of the Wallaby.

## Woolly nightshade

(E315-003-036-01)

A further 49 hours of control work has been undertaken to control Woolly Nightshade on Rangitoto kit e Tonga/D'Urville Island. The majority of mature plants have now largely been controlled with only one mature plant found this year. Contractors have reported that they are still finding and controlling hundreds of seedlings/saplings through out the area.



Woolley Nightshade (centre of photo) Port Hardy, Rangitoto kit e Tonga/D'Urville Island.

## Chilean needle grass

(E315-003-009-01)

During June, management plans for six properties have been refreshed due to change in management of these properties. It was good to see that there have been a number of significant positive changes made on these properties since the first management plans were put in place.

In June a contractor got in touch with Council to inform us of a large flowering/seeding event is currently underway in the Otuwhero River/Blind River area. The same contractor noted that this also happened last year but on a smaller scale. This is unusual as Chilean needle grass typically will only put up aerial seed in the summer period. So far it appears to be confined to the Otuwhero River/Blind River area however it is possible that more properties in warmer areas will be affected. This heightens the risk of spreading Chilean needle grass as it could easily be transported in clothing and on equipment used by vineyard workers undertaking pruning work in this area at this time of year. Areas such as roadsides are also problematic with winter mowing maintenance recently completed.



Council is currently looking at options to test the seeds viability so we can better understand the risk that these events pose.



**Chilean needle grass flowering in June, seed viability unknown.**

### **Mediterranean Fanworm**

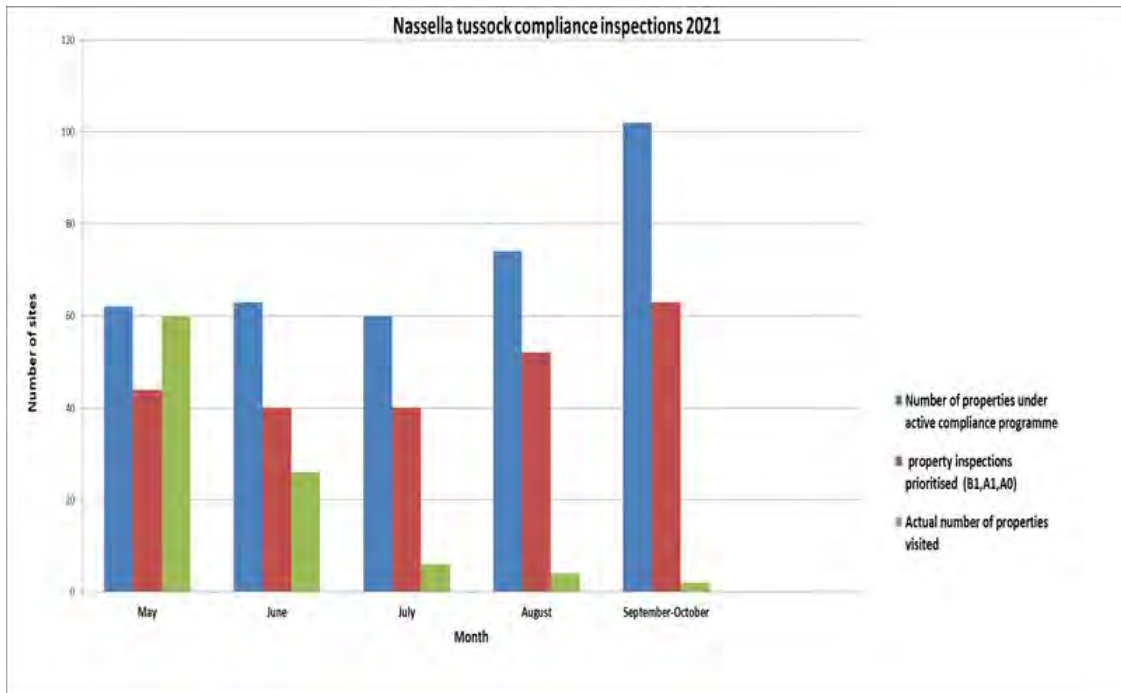
**(E315-003-020-01)**

During May and June, a further 6.5 days of dive surveillance has been undertaken in the Picton and Waikawa areas. No fanworm has been found during this round of diving.

### **Nassella tussock**

**(E315-003-021-01)**

Council Biosecurity staff have completed compliance inspections prioritised for the month of May 2021. Most of the sites inspected comprised of small run holdings and life-style blocks. Work is currently under way to inspect properties due for completion in June, of which 26 properties have been inspected to date. Council has issued one Notice of Direction this month which is expected to be resolved by the end of July. Land occupiers with properties due for inspections in July will be sent a reminder letter to advise them that July inspections will commence from the 15 July. Figure 3 shows the progress of this year's inspection work.



Nassella tussock compliance inspections, progress for 2021.

## Boneseed

(E315-003-004-01)

Planning is currently underway to prepare for the annual Boneseed control work set to be carried out across multiple sites within the Marlborough sounds. Control operations are scheduled to commence on 6 September 2021 and expected to be completed by the end of September. Letters have been sent out to affected land occupiers ahead of the planned work, allowing land occupiers the opportunity to field any queries they may have about the operation by 25 August.

## National Wilding Conifer programme Waihopai MU

(E315-019-003-02)

R&D Environmental ecological consultants have drafted a 2021/2022 operational plan to manage wilding conifer species within the Waihopai Management Uni, subject to the National Wilding Conifer Control Plan. The Operational Technical Advisory Group (OTAG) will meet on 18 August 2021 to review the draft and provide feed-back before its implementation this spring.

## Other Biosecurity Projects/Initiatives

### Biosecurity Education and Awareness

(E315-003-001-01)

The Marlborough District Council Biosecurity section was one of the many Council functions represented at the Marlborough Careers Evening held at stadium 2000 in June. The careers evening was well attended, and was a good opportunity to raise the profile of regional biosecurity and environmental issues which young people are becoming increasingly aware of, and keen to make a difference in.



Marlborough District Council stand at the 2021 Marlborough Careers evening.

## Biological Control Programmes

(E315-007-001-01)

Council Biosecurity has renewed its contract with Manaaki Whenua Landcare Research, to provide plant identification services, and biological control agent releases for 2021/2022. An order for two releases of the Old Man's Beard (OMB) gall mite. The OMB gall mite was approved for release by the EPA in October 2018. This decision came after a successful application to the EPA by the Horizons Regional Council, on behalf of the National Biocontrol Collective (made up of 14 representing Councils) to release the leaf-galling mite *Aceria vitalba* as a biological control agent for OMB.

The action of the mite feeding induces growth abnormalities in the host plant forcing the plant's cells to grow into galls that would otherwise grow into healthy stem, leaf, and flower bud tissue (see image below). The formation of these galls reduces the vigour of the host plant, and reduces the plant's capacity to reproduce. It is hoped that the presence of the OMB gall mite will reduce the vigour of OMB populations in the future, as has been the case of the broom gall mite which has significantly reduced the vigour of Scotch broom (*Cytisus scoparius*) in Marlborough.



Mite damage to an Old Man's Beard seedling. (Photo courtesy of Manaaki Whenua/Landcare Research)



# Environmental Science

## Air Quality Update

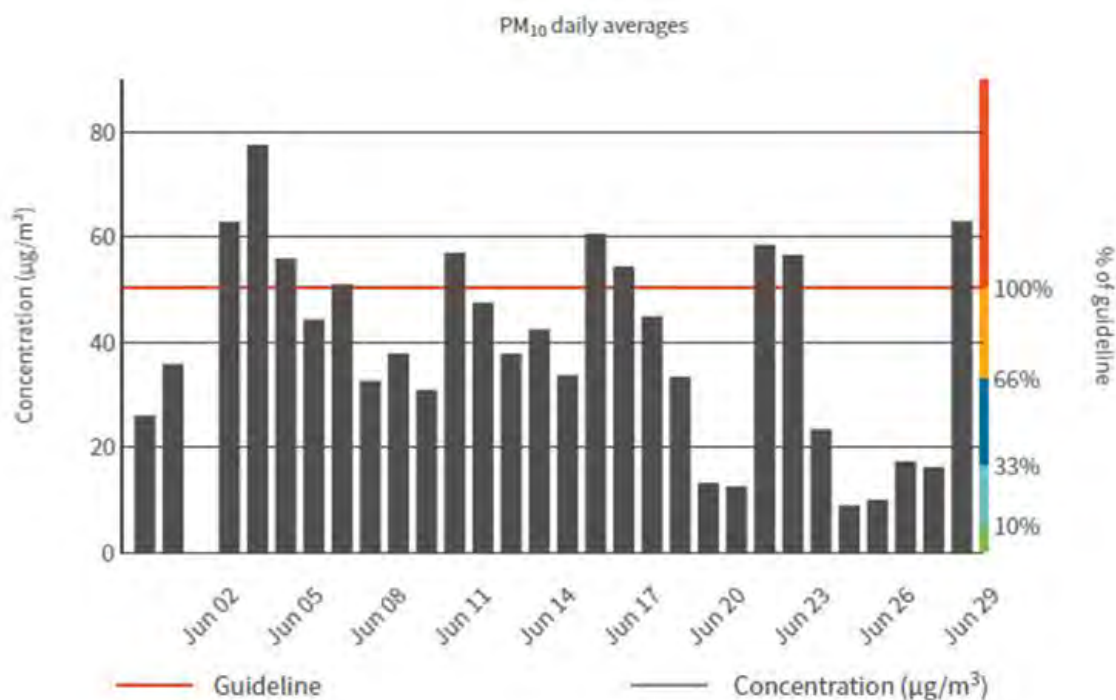
(E300-004-007)

(Report prepared by Sarah Brand)

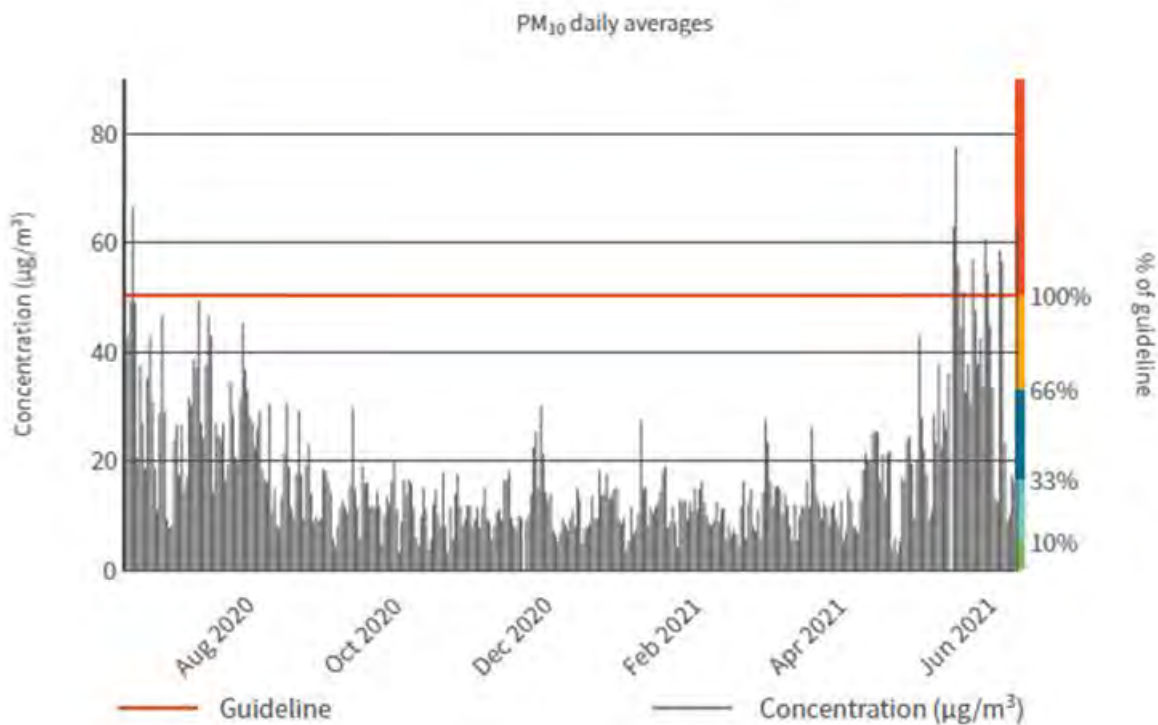
In accordance with regulation 16 of the Resource Management Act (National Environmental Standards for Air Quality) Regulations 2004, referred to as the NES, Council must give notice that the NES for PM<sub>10</sub> has been breached in the Blenheim airshed within the last 12 months. The Council monitors PM<sub>10</sub> concentrations relative to the NES at its air monitoring site in Redwoodtown.

Date of Breach	Location of Breach	PM <sub>10</sub> (µg/m <sup>3</sup> )
3 June 2021	Redwoodtown	62.9
4 June 2021	Redwoodtown	77.5
5 June 2021	Redwoodtown	55.9
7 June 2021	Redwoodtown	51.0
11 June 2021	Redwoodtown	57.0
16 June 2021	Redwoodtown	61.0
18 June 2021	Redwoodtown	54.4
22 June 2021	Redwoodtown	58.5
23 June 2021	Redwoodtown	56.6
29 June 2021	Redwoodtown	63.0

The NES for PM<sub>10</sub> allows the threshold of 50 µg m<sup>-3</sup> to be exceeded on no more than one day per 12 month period. The last exceedance in 2020 for Blenheim occurred on 2 July 2020. These exceedances mean the NES has been breached on ten occasions in the Blenheim in 2021.



PM<sub>10</sub> daily averages for the last 30 days



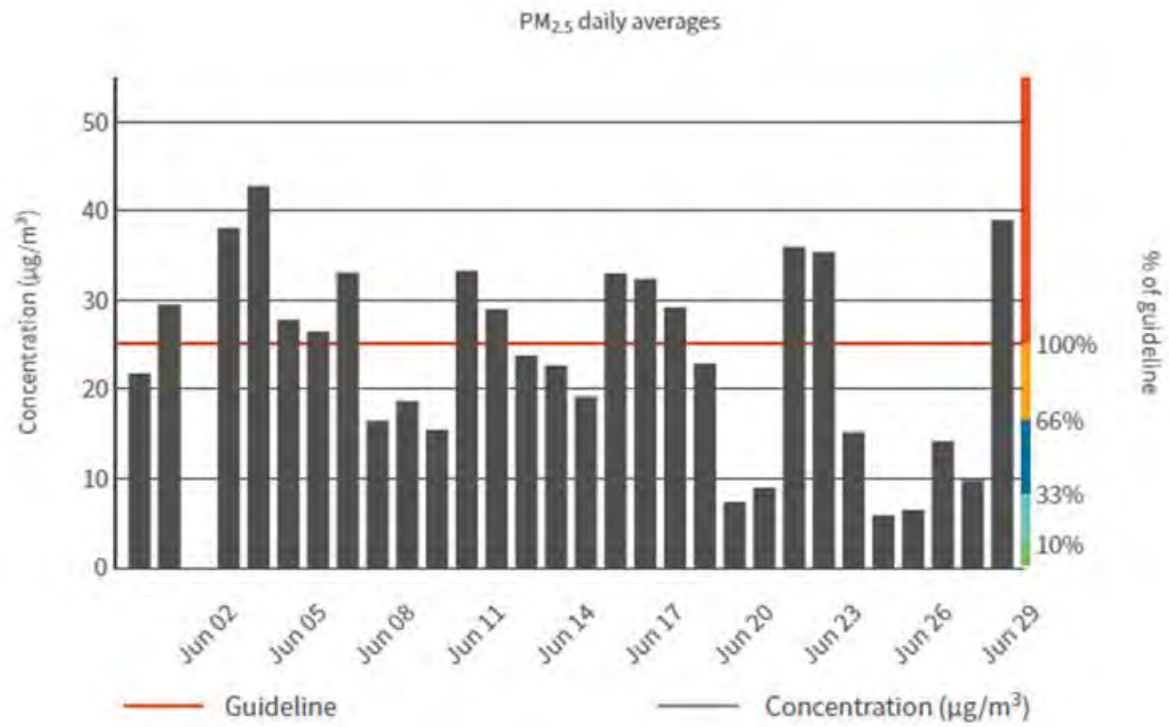
**PM<sub>10</sub> daily averages for the last 12 months**

The Government is still proposing to make changes to the NES which include new daily and annual standards for PM<sub>2.5</sub>. The new daily standard for PM<sub>2.5</sub> is proposed to be 25µg/m<sup>3</sup>. The monitoring of PM<sub>2.5</sub> in the Blenheim airshed has assisted in understanding the consequences of the proposed changes to the NES. Data from the last four years since monitoring began at the beginning of 2017 has shown the Blenheim airshed will not meet the proposed standard. A significant number of exceedances of this new standard have been seen above the proposed allowable exceedance of three times a year.

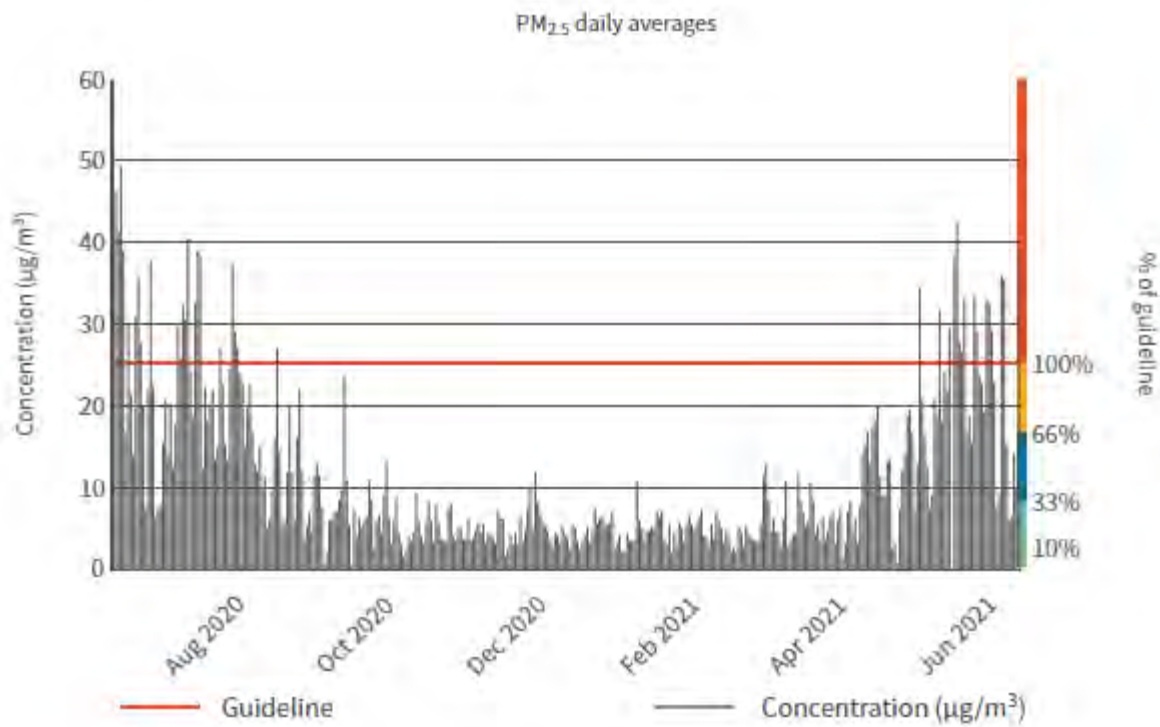
Year	Number of PM <sub>2.5</sub> exceedances above 25µg/m <sup>3</sup>
2017	72
2018	61
2019	33
2020	45

For the current year, monitoring shows that this standard has been exceeded 17 times so far beginning on the 20 May 2021. The largest of these PM<sub>2.5</sub> exceedances was 42.8µg/m<sup>3</sup> on the 4 June 2021, the same day as the greatest PM<sub>10</sub> exceedance of 77.5µg/m<sup>3</sup>.





**PM<sub>2.5</sub> daily averages for the last 30 days**



**PM<sub>2.5</sub> daily averages for the last 12 months**

Council is undertaking further work looking at non-regulatory work programs that could help assist in lowering PM levels in the region. These include investigating setting up a “Good Wood” supplier’s scheme similar to Nelson City Council which promotes wood suppliers that have agreed to supply Nelson households with either:

- Seasoned firewood, suitable for immediate use during winter months, or
- Green (unseasoned) firewood delivered sufficiently far in advance of winter so that, if properly stored by the user, it will be seasoned for use in the winter months. Ideally this would be before Christmas for the following winter.

Work is also being undertaken to establish a more structured air quality communications plan throughout the year to assist in public education reminders about air quality and what everyone can do to assist in ensuring we all have cleaner air to breathe.

## **Environmental Monitoring Network - 17 July Flood**

**(E365-000-008)**

**(Report prepared by Emma Chibnall and Mike Ede)**

### **Introduction**

The Environmental Monitoring team operate and maintain 100 telemetered monitoring stations across Marlborough, recording river, groundwater, rainfall, air quality, and climate data. The main purpose of the stations is to record long term data trends, and provide real time information for flood management purposes. Data is used for decision making and live data is especially useful for flood monitoring, as was the case during the flood event on 17 July 2021. Ongoing monitoring network maintenance and technological upgrades have seen an improvement in the reliability of the monitoring network over time. It is a goal of the Environmental Monitoring team to get 99% data capture annually. Some resilience has been built into the network in recent years with back up equipment at some sites in the case of damage or failure. Overall the network performed very well leading up to the flood on the 17 July and over the next couple of days, with all critical sites providing data real time.

### **Floodwatch and Data Delivery**

Floodwatch is the primary web page for information during the flood events as was the case on 17 July. The Environmental Graphs page also provides access to data from the network and enables similar graphs to be viewed. Unfortunately, at the time of writing we don't have any statistics on the numbers of views of Floodwatch. However, the log files of the environmental graphs show that a number of our river site information was very popular on the 17 July. Not surprisingly Wairau River at Barnetts Bank (State Highway One) data was viewed almost 3000 times, Omaka River data was a close second with 2500 views, followed by Waihopai, Rai and Awatere rivers with about 2000 views each.

Seventeen river sites are available on Floodwatch of which fourteen are maintained by the Environmental team with the other sites coming from NIWA. Four river level monitoring sites became unavailable or damaged during the event. These sites were Tuamarina River at Boat Point, Kaituna River at Readers Road, Awatere River at Awapiri and Awatere River at Mouth. The Kaituna River site became unavailable when the Havelock cell tower went down. Data from the site was available two days later when the cell tower was restored and Environmental Monitoring staff were able to attend the site.

Thirty six rainfall sites are available on Floodwatch of which twenty five sites are maintained by the Environmental Monitoring team. The remainder of the sites are operated by Fire and Emergency and neighbouring Councils Tasman and Environment Canterbury. Twenty four of MDC's sites were available during the entire event. The data from the one rainfall site that was unavailable and it is known to fail during inclement weather, the site recorded all data and transmitted it into MDC on the 18 July. We are currently reviewing the communication at this recently installed site to ensure that it is available during the flood events.





**Figure 1: Wairau River at State Highway One Bridge 17 July 2021 at 1615.**

## **Inspection and Damage**

Of the 54 rainfall and river sites operated by the Environmental Monitoring team 42 sites were visited and verified as correct and working within seven days of the flood, including those in the ranges only accessible by helicopter.

The three damaged river sites are:

- Tuamarina at Boat Point –flooded over and will need to be entirely re-built.
- Awatere River at Awapiri – sensor gas line damaged and staff gauges washed away
- Awatere River at Mouth - sensor gas line damaged and staff gauges washed away

Apart from the Tuamarina site all data during the event has been recovered and temporary repairs have been made to get sites operational again.

Upon further inspection of the entire monitoring network two groundwater sites in the Wairau Aquifer were also damaged by the event. Both sites monitor levels and conductivity and became artesian due to the high levels in the Wairau River. The sites suffered significant damage to the electrical components and will both need have equipment replaced and rebuilt. One of these has already been completed.

We are currently working on re-establishing the five sites and working the insurers regarding the damage. At this stage the damage has been estimated in the vicinity of \$70,000. This will be finalised once the reinstatement has been completed.

The Environmental Monitoring team will be busy tidying up sites, from debris and damage over the next couple of months to ensure the continued reliability of the network. Additional field work will be carried out to accurately survey in flood water levels and cross sections. Many additional measurements of flow across all rivers will be carried out due to changes in river channel shape. Flow measuring work will be critical as we

come into the drier months as changes in river channel shapes can have a significant impact on the data we provide during times of low flows.

## Flow Gaugings

The primary objective of a monitoring station measuring water level in a river is to provide a record of flow at that location. It is difficult, if not impossible, to continuously measure flow directly in most natural water courses so we measure water level and periodically measure flow for a given stage, often referred to as gauging. The continuous record of level is then converted to a record of flow by means of a rating, typically a curve, which correlates stage with flow. Under almost all circumstances the stage – discharge relation for open channel flow at a hydrometric station is governed by physical features at and downstream of the station, referred to collectively as the control. A control may be stable or may change due to scour or deposition, growth of vegetation, engineered activity such as mining of aggregate, or operation of a structure such as a gate. Each change in control alters the stage – discharge rating. Where controls are known or suspected to change over time, a gauging programme of suitable frequency is required to detect the movement and provide the necessary data to develop a new rating. New knowledge may add to or alter interpretation of previous ratings and some or all previous curves for a site may need to be revised; thus, flows derived from rating curves are not static data.

Floods generally provide two opportunities for ratings, the first and most important one is the opportunity to capture high flow gaugings to enable the rating curve to be confirmed with actual data rather than extrapolated data. It also provides the opportunity to check if the rating curve relationship has changed as a result of scour and deposition of features that effect the rating curve.

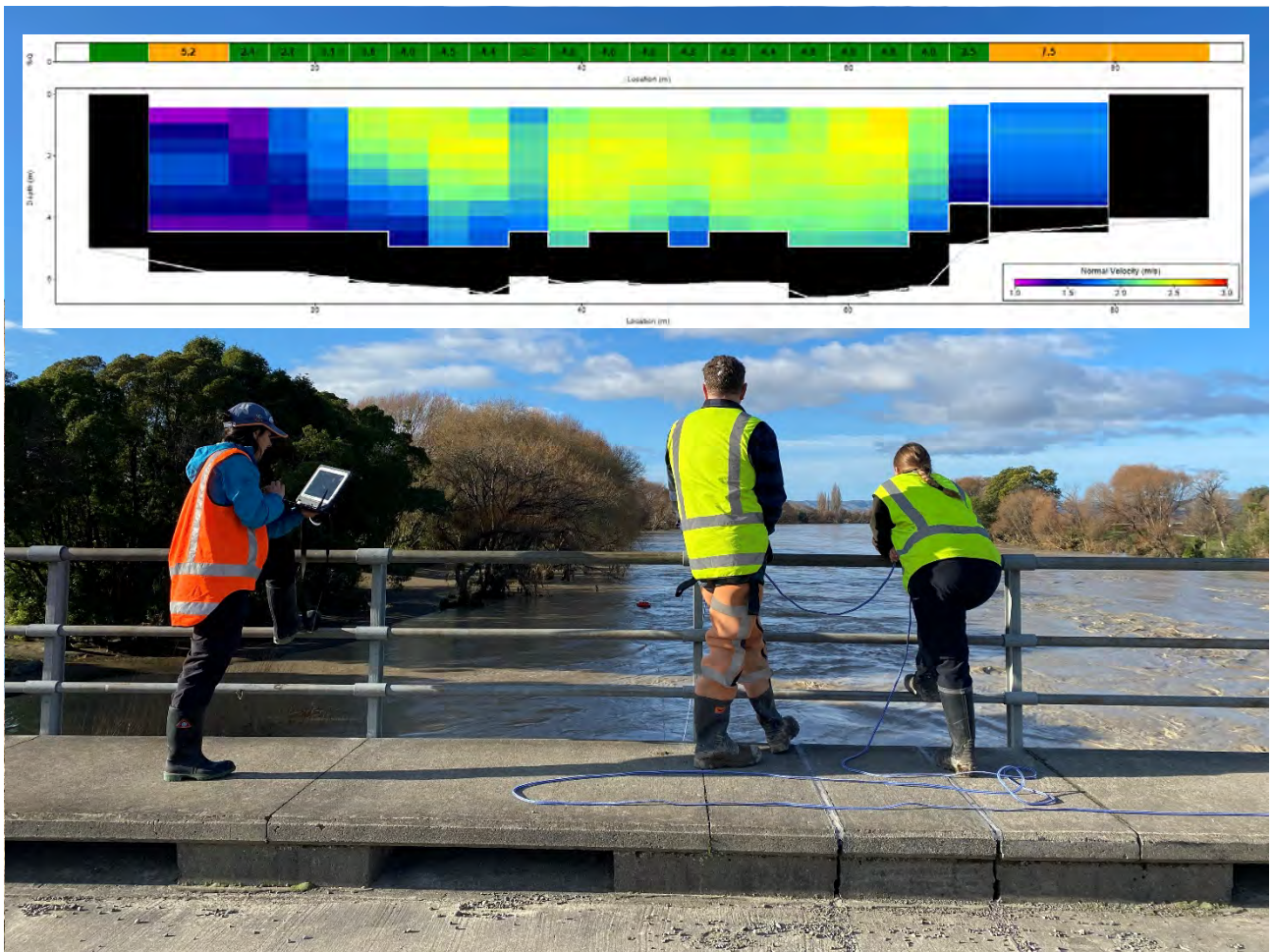
Last year the Environmental Monitoring team purchased HydroSTIV, a new and exciting technology. This software measures river velocity and flow using video, water level and cross section information. It also makes it possible to safely and easily measure the flow velocity and flow rate without approaching the river in the event of a danger such as a flood. This software has allowed us to capture data at higher flows than we have been able to measure before.

Four staff worked on Saturday 17 and Sunday 18 July and captured video footage of rivers that will be processed using the software once cross section survey work is completed. Videos were captured on the Wairau, Waihopai, Omaka, Goulter, Awatere and Wairau diversion rivers with peak level videos recorded at some sites. They also completed ADCP (acoustic Doppler current profiler) gaugings when conditions allowed the safe deployment of this technology and safe access to sites could be obtained.



**Figure 2: Wairau River at Barnett's Bank (State Highway One) 17 July 2021 at 1750. Screen shot of video taken from a Helicopter over the river that has been analysed using the HydroSTIV software. The red lines are river velocity vectors computed by the software.**





**Figure 3: Monitoring Team members, Emma Chibnall, Mark Caldwell, Alice Overend, measuring flow at the Wairau Ferry Bridge at Spring Creek 18 July 2021 with a result of 885 m<sup>3</sup>/sec. The insert shows the software results displayed in the ADCP software. Photo by Charlotte Tomlinson**

## Nautical and Coastal Team

### State of the Environment – Water Quality

(E325-002-001)

Monthly coastal water quality sampling continues as scheduled.

### State of the Environment – Algal blooms

(E325-002-005)

There was a widespread phytoplankton bloom through the grove arm and inner Queen Charlotte Sound/ Totaranui in late April. This bloom was reported to the Nautical and Coastal team by several concerned members of the public. Samples were taken and analysed by Cawthron; the bloom was found to be a naturally occurring non-toxic diatom bloom.



Diatom bloom in Waikawa Bay on 29 April, 2021.

### State of the Environment – Intertidal Monitoring

(E325-002-002)

SOE monitoring was completed at the Wairau Lagoon in late April. Monitoring was conducted by Salt Ecology. The monitoring was designed to build on the earlier monitoring of the lagoon by Cawthron (2015) by completing the survey of intertidal salt marsh areas and focussing on the ecological health of subtidal areas. The findings of this monitoring will be presented to the environment committee later in the year.



Leigh Stevens of Salt Ecology monitoring the ecological health of the Wairau Lagoon (April, 2021).

## State of the Environment

### Ecologically Significant Marine Sites

(E325-002-004)

The 2020/21 fieldwork season was completed in April with visits to the last sites at East bay. This years' monitoring has included sites in Te Whanganui/Port Underwood, East Bay and Pelorus Sound/Te Hoiere. The draft monitoring has been completed and once the findings have been assessed against the criteria for ecological significance by the expert panel the recommendations will be presented to the environment committee.

The review of the ecologically significant marine site programme is well underway. Hilke Giles from Pisces Consulting has interviewed MDC staff and the members of the expert panel involved with the programme. A workshop was held in Nelson on the 27 April with the expert panel to consider ways that the programme can be improved to meet council objectives.

### Sustainable Seas

(E325-016-006)

Sustainable seas have appointed a project lead (Dr. Vonda Cummings (NIWA)) for the Marlborough Sounds casestudy. A workshop was held on the 27 July in Blenheim with members of the Sustainable Seas leadership team, DOC, FNZ/MPI, MDC, Ngati Kuia and the Marlborough Sounds Integrated Management Trust. The outcome of this workshop was agreement on a case study revolving around the concept of restoration of shellfish beds in the Marlborough Sounds. The next step is to develop a case study proposal that will be submitted to Sustainable Seas in September to allow for the release of funds for the case study. The focal area of this case study will be primarily the Pelorus Sound/Te Hoiere as the case study will provide a foundational piece of work for phase two of the Te Hoiere restoration project.



## **Envirolink Fund**

**(E325-018-001)**

MDC staff have been successful in applying for a medium envirolink grant in a collaboratively funded project with Nelson City Council and Tasman District Council. The medium advice grant is titled 'Technical Options for Restoration of the Coastal Marine Area of Te Taihū'. This piece of work will be undertaken by NIWA and provide complementary information to the Sustainable Seas case study and critical information for phase two of the Te Hoiere restoration project.

## **The Coastal Management Special Interest Group (CSIG)**

**(E325-000-004)**

The membership of the Coastal Management Special Interest Group (CSIG) is comprised of the coastal scientists and coastal planners from all 16 regional councils and unitary authorities. It is convened by MDC coastal scientist Oliver Wade and BOPRC coastal planner Stacey Faire. The CSIG has been working on several key projects recently:

### **NPS-FM and Estuaries**

The Minister of the Environment (MfE) has expressed an interest to implement the PCE recommendation to incorporate estuaries as freshwater management units in the national policy statement for freshwater management (NPS-FM) under a national objectives framework. The CSIG acted proactively by holding a two day workshop focussed on estuaries – ki uta ki tai – mountains to sea, at MfE. The CSIG took a collaborative approach to the hui and also invited colleagues from MfE, FNZ, DOC, Sustainable Seas, NIWA and PCE to join the discussion. MfE facilitated the collaboration by providing the location and administrative and logistical support for the meeting. The hui provided a face to face opportunity to share regional science monitoring and coastal planning expertise and experience, about estuaries, with respective regional authorities and with central government. Hayden Johnston (MfE) opened by providing Ministerial context for the timing of the workshop and Vicky Addison (MfE) outlined their work programme and welcomed feedback from practitioners. MfE encouraged the group to identify regulatory solutions that can be adopted in a relatively quick timeframe while also ensuring that elements can be staged and tested with regional councils. The first part of the workshop focused on answering key questions around estuaries and the afternoon concluded with a deep dive to identify opportunities to improve collaboration, within the regional sector and with central government. The CSIG convenors recently held a debrief workshop with central government attendees and are developing a collaborative workplan. The second day of the workshop was regional sector focussed and provided an opportunity for regional councils to create an estuaries action plan (see below) which sets down current research, identifies and prioritises research gaps and established criteria to guide future estuaries research.



'If we manage our estuaries ki uta ki tai – from the mountains to the sea – our estuarine habitats will thrive for years to come' – PCE boards

## Ki uta ki tai – from the mountains to the sea

### An Action Plan for Estuaries

The Action Plan for Estuaries is a snapshot of current research, research needs and criteria to apply to research projects as collated by the regional sector Coastal Management Special Interest Group (CSIG) – 2021

#### Research needs for improving estuary management

- 1 Attribute development and limit setting
- 2 Tools for the assessment of cumulative effects
- 3 Methods for rapidly assessing the health of estuaries
- 4 Methods for standardising consent monitoring and reporting
- 5 Support for inclusion of Mātauranga Māori
- 6 Remediation and restoration tools
- 7 Consistent criteria for sites of significance
- 8 A best management practice for stormwater
- 9 Methods for monitoring progress towards NZ Biodiversity Strategy goals
- 10 Understanding the cumulative effects of seawalls
- 11 Methods for assessing and improving the blue carbon storage capability of estuaries
- 12 How to understand the historic state of our estuaries
- 13 Tools for subtidal mapping
- 14 How to measure emerging contaminants

#### Is your proposal appropriate?

- Has a partnership approach, including hapū/iwi, been taken to developing the proposal?
- Is the research applicable at different scales – both nationally and regionally?
- Are the outputs applicable to multiple estuary types?
- Is the proposal good value for money?
- Does the research closely align with the CSIG research needs?
- Are the outputs non-proprietary?
- Are the outputs easy to use and not requiring ongoing maintenance?

*'Estuaries can also be called lagoons, harbours, inlets, sounds, river or stream mouths and wetlands. They are places where freshwater from the land, carried by streams and rivers, meets and mixes with saltwater from the ocean' - DOC*

#### Work already underway or completed

- LAWA module – how healthy is my estuary?
- The managing mud project
- National estuary dataset
- MfE vulnerable catchment work
- National estuary monitoring protocol
- Council state of the environment monitoring
- Estuary benthic health models



#### Useful links

PCE – [www.pce.parliament.nz/publications/managing-our-estuaries](http://www.pce.parliament.nz/publications/managing-our-estuaries)

DOC estuaries hub – [www.doc.govt.nz](http://www.doc.govt.nz)

NZA estuaries research – [www.nza.co.nz/estuaries-and-wetlands](http://www.nza.co.nz/)

Coastline – [www.coastline.org.nz/what-we-do/our-work/estuaries](http://www.coastline.org.nz/)

## Coastal Adaptation Network

MDC staff attended a two day workshop hosted by GNS in Wellington on developing a coastal adaptation network (CAN). This workshop was attended by staff from 32 regional, unitary and territorial authorities. The purpose was to build a network of council coastal adaptation practitioners and brainstorm how that network can improve collaboration. Coastal adaptation is a challenge that all Councils are already, or will face in the near future. Many examples were cited, especially by territorial authorities, where they are already facing challenges with private property and council infrastructure at risk of sea-level rise, erosion and inundation. These challenges are difficult to meet for many authorities with small rate payer bases and limited resourcing. A steering group has been set up to develop ideas about how the network will function moving forward.

## Aquifer Response to 17 July 2021 Wairau River Flood

(Report prepared by Pete Davidson)

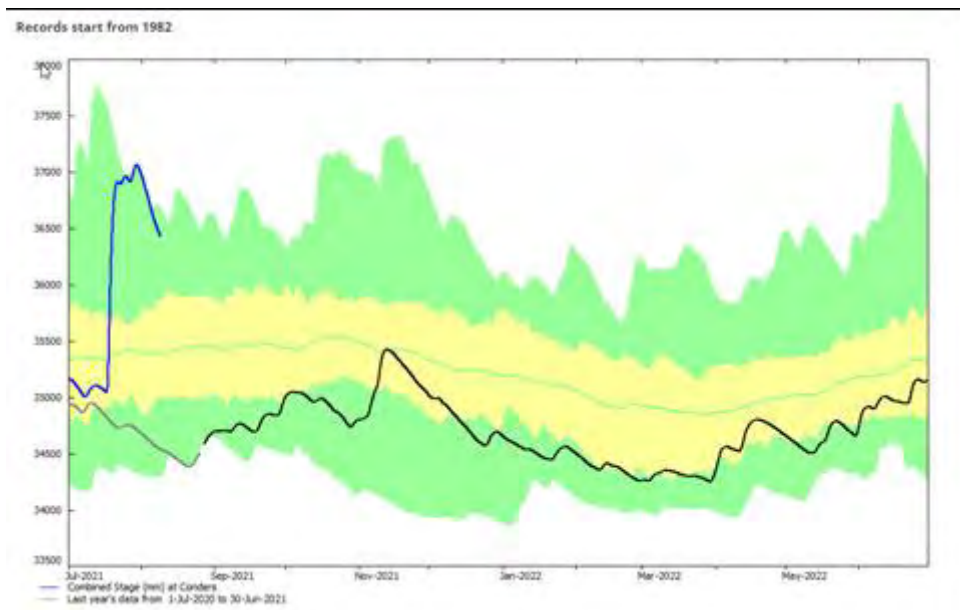
### Inland Wairau Aquifer & Springs (northern Wairau Plain) (E345-007-001)

The 17 July 2021 storm which generated the very large Wairau River flood event brought major devastation to parts of the Marlborough Sounds and Lower Wairau Plain, but benefited aquifer resources, some of which were in a depleted state after a decade of drier than normal weather conditions which increased demand and reduced recharge rates.

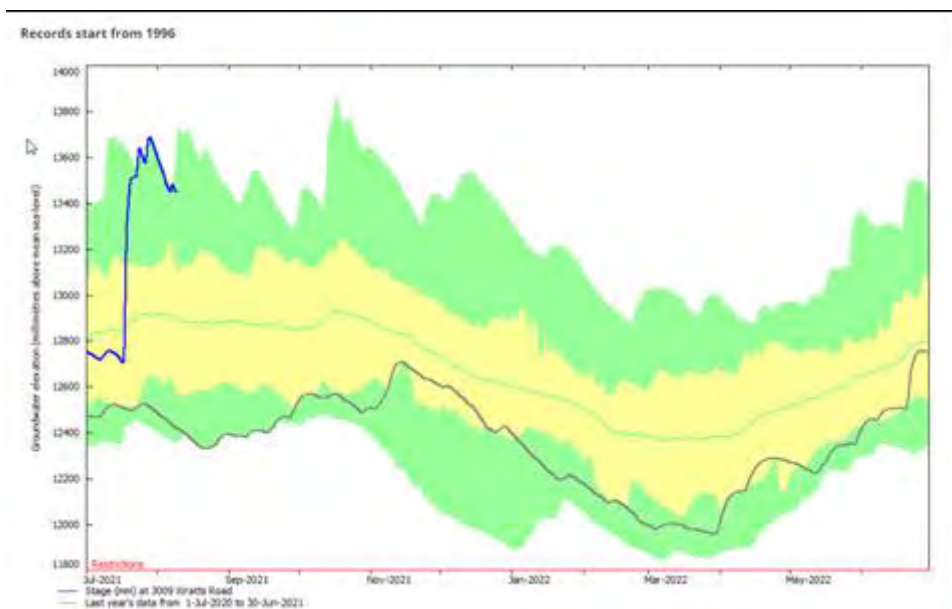
The following series of graphs show the aquifer response to the storm at MDC SoE monitoring network well sites. All graphs are plotted the same way except for Spring Creek flow. All use the same level frequency plot for each well featured. The water year is plotted from July to July, with levels for the current year from the 1 July 2021 in blue. Levels for the previous 2020/21 water year are marked black. The average level for the entire record at the particular site is marked by the green line. The green and yellow bands represent the frequency for each day of record. The yellow band represents the middle 60 percent of observations with the two green bands showing the upper and lower percentiles of 20 percent each.

It's too early to tell if the Wairau River flood event has scoured the floodway and increased the leakiness of the recharge reach meaning higher natural rates of channel loss to the Wairau Aquifer or not. The flood

flows were high enough to potentially cause significant change to the floodway sediments and may trigger a reset of the flow exchange. Whether a new equilibrium is established or the increased storage recedes again is uncertain. While the water volume added to the Wairau Aquifer shown in Table 1 is sufficient to sustain around half of that required in a normal summer crop irrigation season, the rate of drainage of Spring Creek has also reached a very high rate. The aquifer storage is dynamic and not stationary.

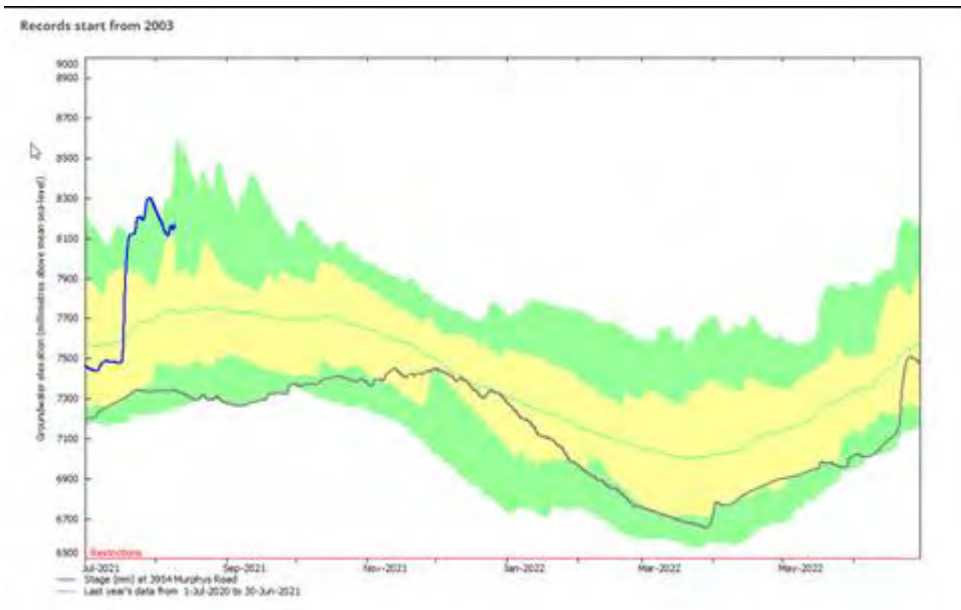


**Figure 1: Unconfined Wairau Aquifer in recharge sector north-west of Renwick. Groundwater levels in unconfined Wairau Aquifer rose by ~2 metres based on observations at MDC Condors Well P28w/0398-3821. Not maximum level observed since early 1980s with levels lower by 0.75 m. compared to historical values. However, 2021 starting levels lower compared to previous levels due to long term declining trend. Some of level rise reflects rainfall but most is leakage of Wairau River channel flow.**

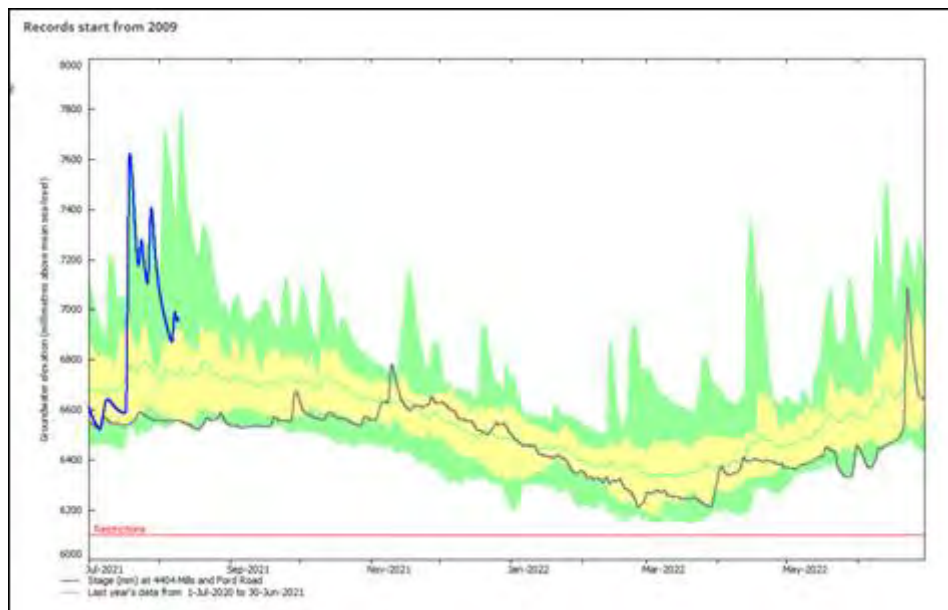


**Figure 2: Unconfined Wairau Aquifer in Recharge Sector at Rapaura. Groundwater levels in unconfined Wairau Aquifer rose by ~1 metre based on observations at the MDC Wratts Road Well P28w/3009. Some of the rise in well level due to rainfall but most associated with pressure effect generated by increased leakage of Wairau River channel flow to aquifer.**

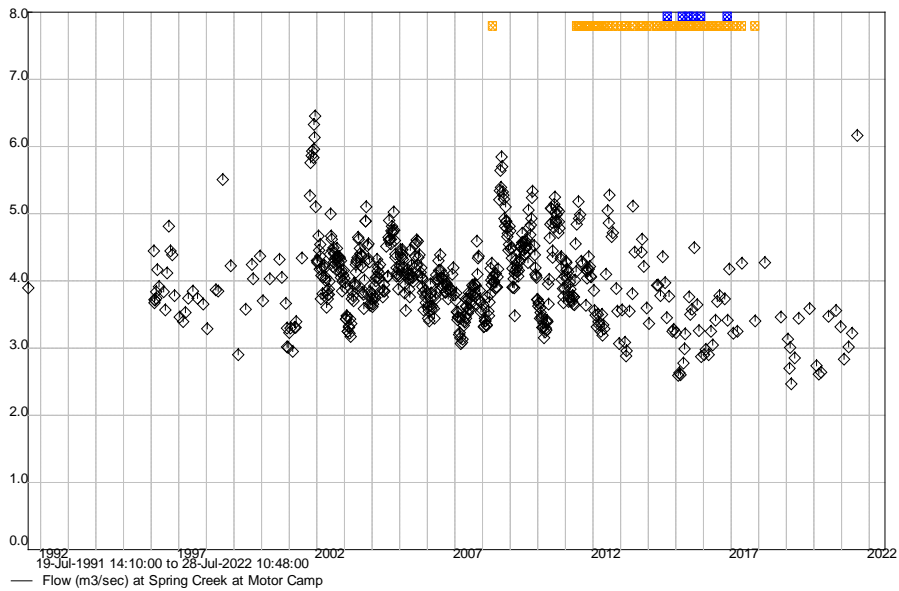




**Figure 3: Semi-confined Wairau Aquifer in western suburbs (Springlands) of Blenheim representing area of re-emergent groundwater (springs). Rise of ~0.8 metres at MDC Murphys Road Well 3954. Despite this site having relatively short period of record, groundwater levels not maximum observed. Most of groundwater level rise due to local rainfall as well located too far from Wairau River to be affected by direct channel leakage, although likely to be a slight pressure effect.**

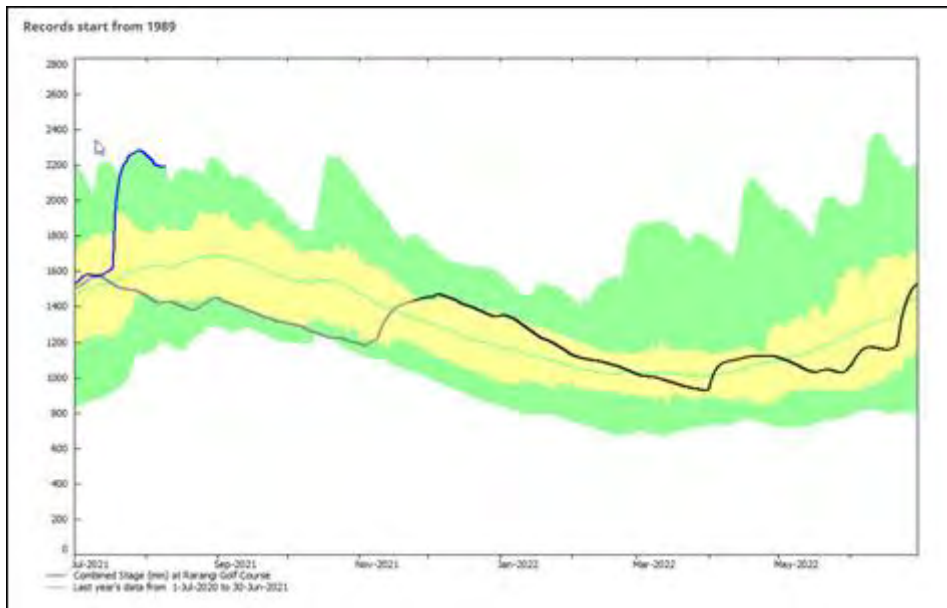


**Figure 4: Semi-confined Wairau Aquifer at MDC Well 4404 in Mills and Ford Road in Spring Belt. Rise in groundwater level of ~1 m. caused in part by Ōpaoa River flood flow of 49 m<sup>3</sup>/s. Shape of well hydrograph reflects channel influence which isn't as attenuated as Wairau Plain well responses.**

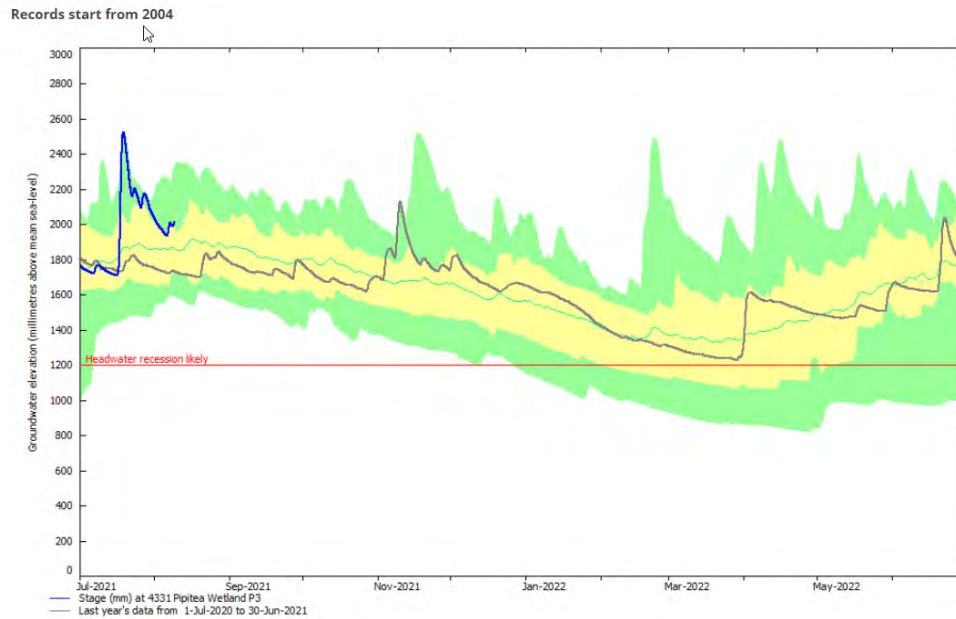


**Figure 5: Most shallow Wairau Aquifer groundwater exits system via springs which rise in mid plains area. Spring Creek is the largest of these springs with gauged flow at the motorcamp site of 6.2 m<sup>3</sup>/second measured on 28 July (seven days after 17 July 2021 flood to allow backing up effects to subside). While the flow isn't the highest on record, starting aquifer levels (spring levels) relatively low compared to highest historical flow in late 2001, meaning the aquifer had more free-board. There may also have been more localised rainfall runoff in 2001.**

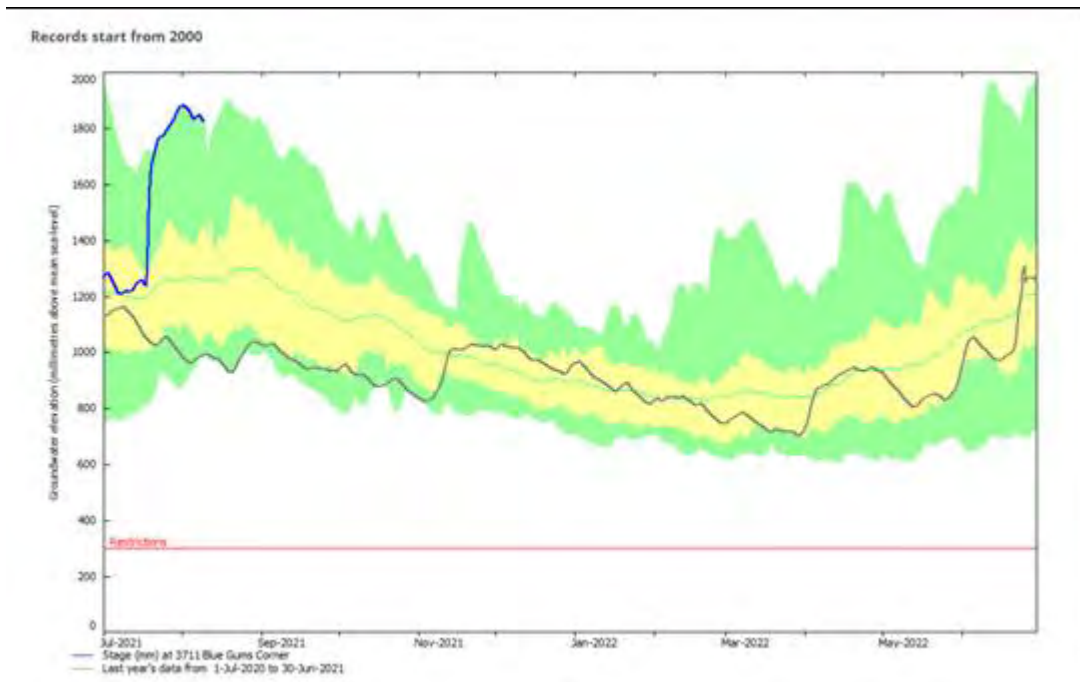
### Coastal Wairau Aquifer & Rarangi Shallow Aquifer



**Figure 6: Unconfined sandy Rarangi Shallow Aquifer 400 m. inland from coast at golf course. Most of ~0.7 metre rise due to direct infiltration of rainfall with some runoff from ranges. Not maximum level observed which occurred in 2010 but close to it based on record dating back to 1989 at site.**



**Figure 7: Pipitea Wetland associated with Rarangi Shallow Aquifer 900 metres inland from coast. ~0.8 m. rise in channel level similar in magnitude to inland well at golf course, but less damped as you would expect being an open waterway. Close to highest level on record since site established in 2007**



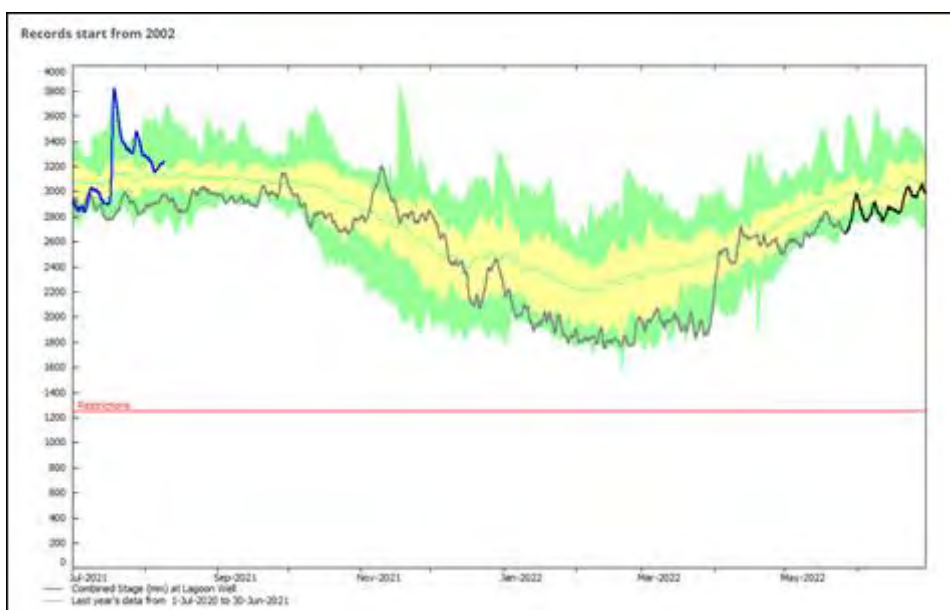
**Figure 8: Unconfined sandy Rarangi Shallow Aquifer near coast providing early warning of sea-water intrusion. Rise in RSA level of ~0.7 m. at MDC Well 3711 similar magnitude to other sites representing RSA, and near maximum on record based on 20 years of record.**





**Figure 9: Confined coastal Wairau Aquifer opposite Rarangi representing pressurised groundwater at 40 metres depth. Groundwater levels rose by just over one metre due to a combination of pressure effect from river recharge but mostly loading of Wairau River channel squeezing aquifer with low barometric pressure. Highest level observed since site established in 2000. Some damage to well water level recorder instrumentation caused by natural rapid rise in well levels, explaining why record stops abruptly. Similar response at MDC Bar Well 1733 north of Wairau River mouth.**

## Riverlands Aquifer



**Figure 10: Confined Riverlands Aquifer at MDC Lagoons Well 10346 near oxidation ponds. ~1 m. rise in groundwater level reflects loading of Wairau River/other local surface waterways squeezing confined aquifer rather than bulk transfer of water. However, there will be some recharge arriving from the Wairau River as pressure effect.**

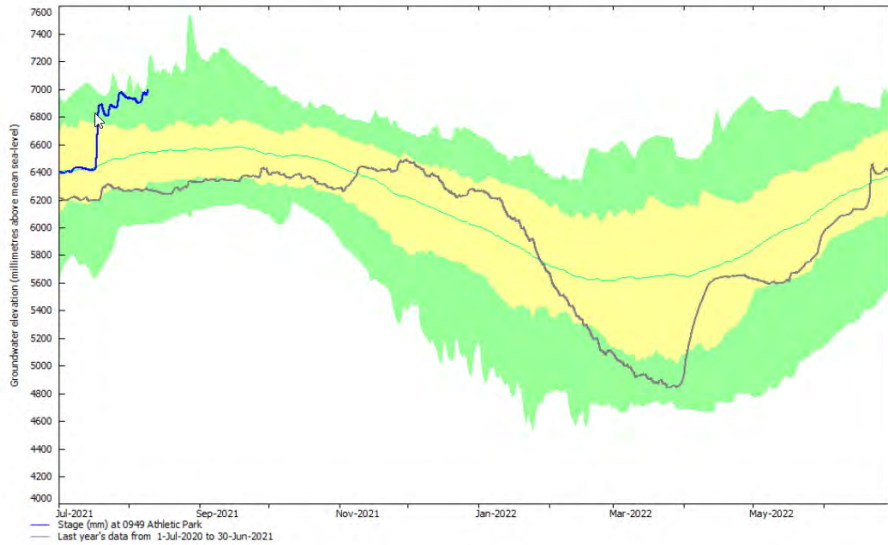
Records start from 2006



**Figure 11: Inland confined Riverlands Aquifer at MDC Well 4402 off eastern end of Alabama Road. Similar response to Lagoon well representing Riverlands Aquifer, with a loading effect rather than effective recharge.**

## Taylor River & Fan Aquifer

Records start from 1977



**Figure 12: Semi-confined Taylor Fan Aquifer on south-western outskirts of Blenheim at MDC Well 949 (Athletic Park). ~0.6 m. rise in groundwater level associated with 17 July, Wairau River flood/weather event. Taylor River flow peaked at 9 m<sup>3</sup>/second during this flood event which is small compared to the largest observed flood in catchment of ~175 m<sup>3</sup>/second at Borough weir. Reflects distribution of rainfall across Wairau Plain during storm event on 17 July 2021. Most of rise in groundwater level probably due to local rainfall infiltration, with some increased recharge from Taylor river channel leakage.**

## Southern Valleys Aquifer suite

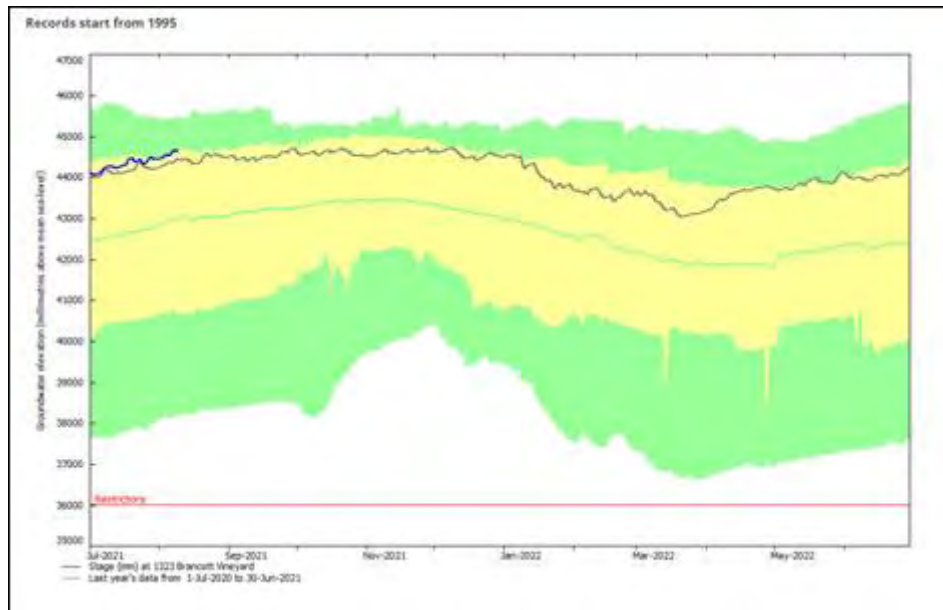


Figure 13: Levels at Well 1323 representing semi-confined Brancott Aquifer hardly responded to the weather system associated with 17 July 2021 Wairau River flood event. This was a common response for eastern Southern Valleys aquifer systems.

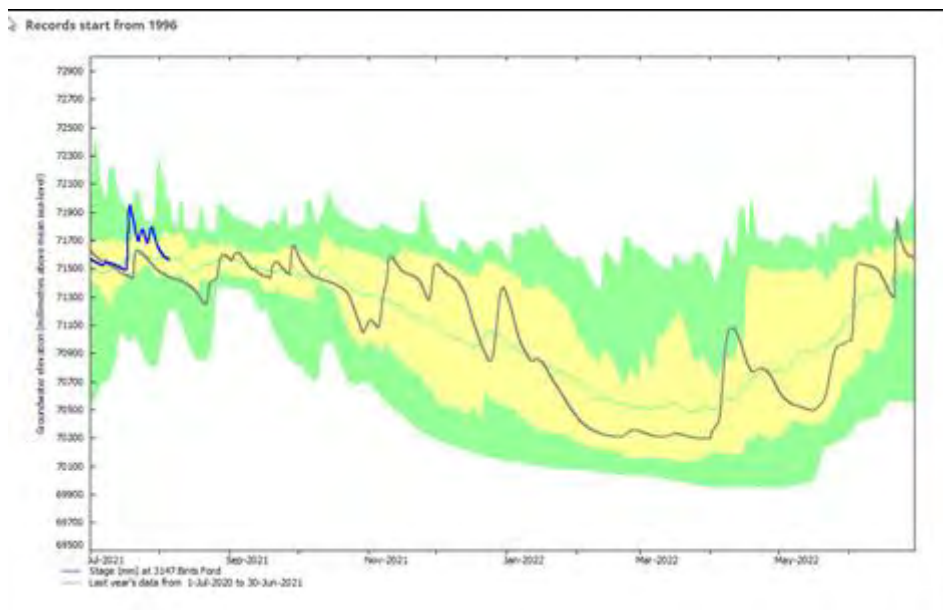


Figure 14: Levels at MDC Well 3147 at Bints Ford in the Fairhall-Brancott Valley rose by only ~0.4 metres in response to 17 July weather event. Well represents shallow groundwater contained in Fairhall River riparian gravels and response to channel flow. The relatively small rise is consistent with Brancott Aquifer response and significantly lower rainfall in the east, closer to Blenheim.



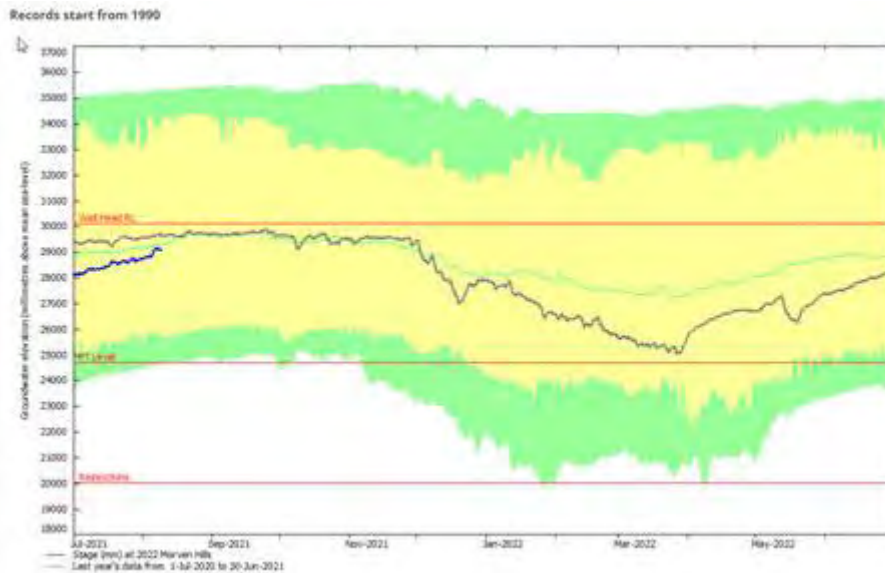


Figure 15: Confined Benmorven Aquifer levels at MDC Well 2022 were largely unaffected by the flood event due to isolation from surface hydrological processes and less rainfall on south-eastern side of Wairau Plain.

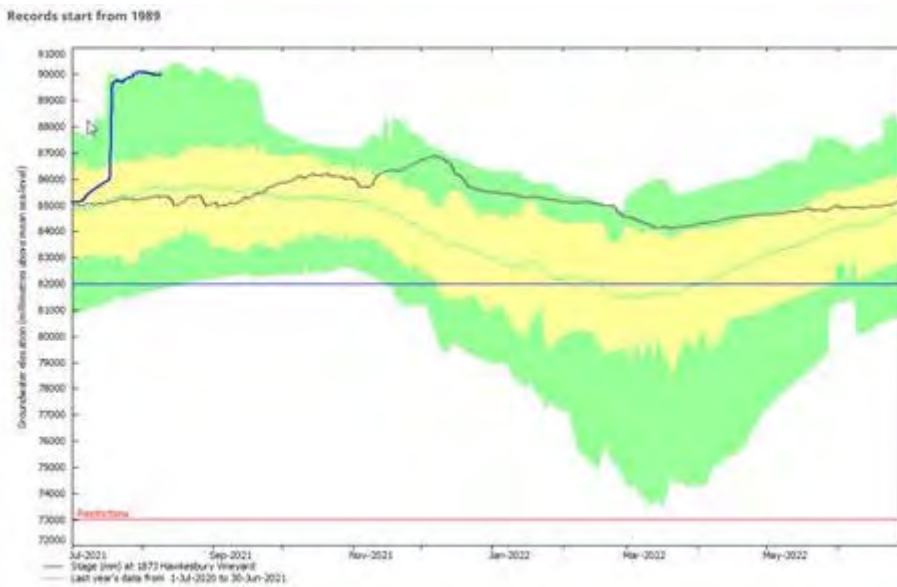
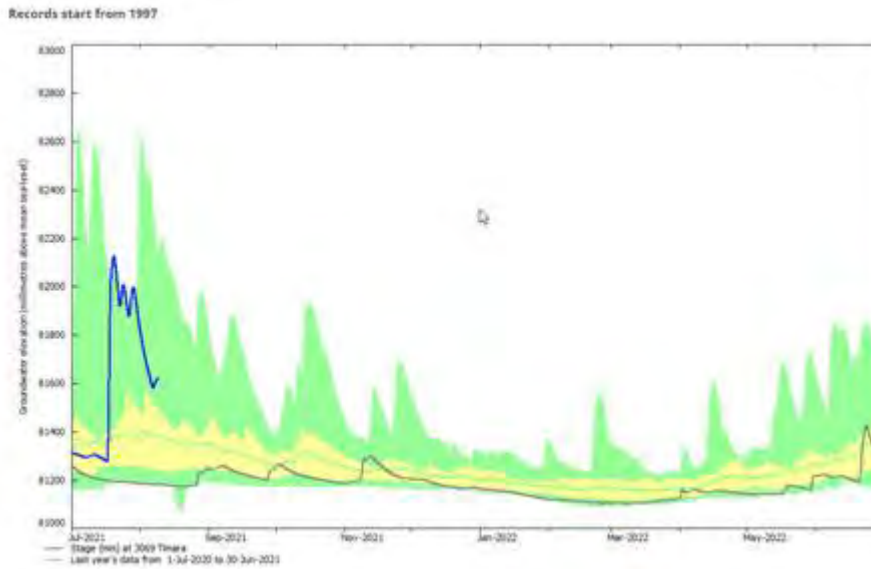
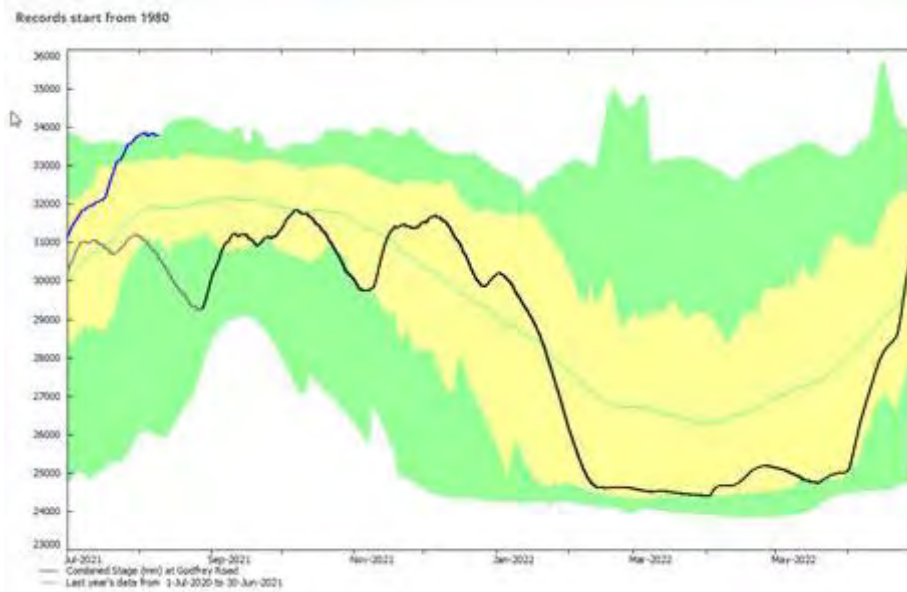


Figure 16: Semi-confined Omaka Aquifer represented by Well 1873 in Hawkesbury Road. The ~3.5 metre rise in groundwater level is relatively large compared to other medium depth wells in the Southern Valleys and didn't occur in the neighbouring deep well 2917, but is explained by steep rainfall gradient across Southern Valleys catchments for July 2021 flood event from high in west to lower in east. Steep rises in level have occurred at this well previously during periods of high rainfall (2008) and thought to partly reflect shallow aquifer structure.

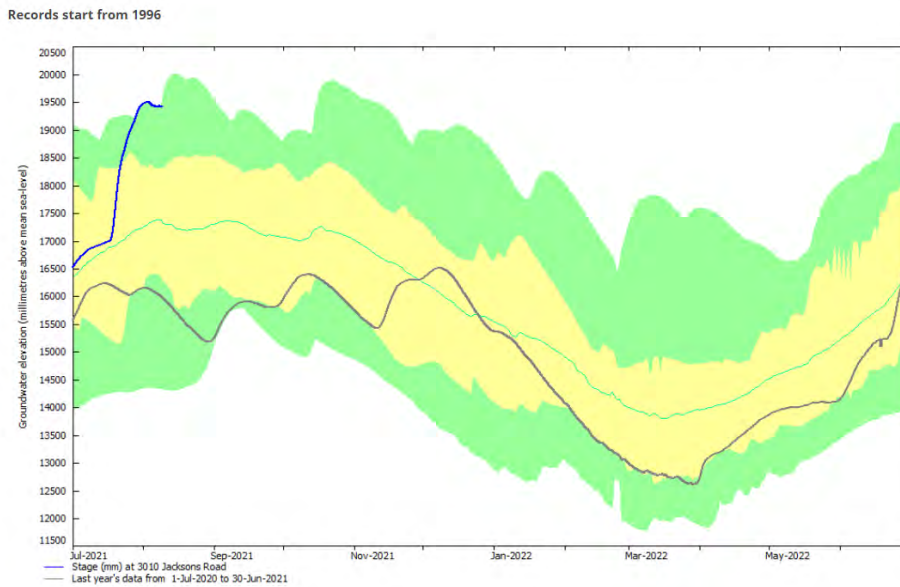
## Omaka River Aquifer



**Figure 17: Unconfined Omaka River Aquifer representing alluvial terraces in middle reaches of catchment at MDC Well 3069 near Tyntesfield Road. Levels rose by ~0.8 metres in response to the 17 July 2021 storm. This largely reflects the Omaka River response.**

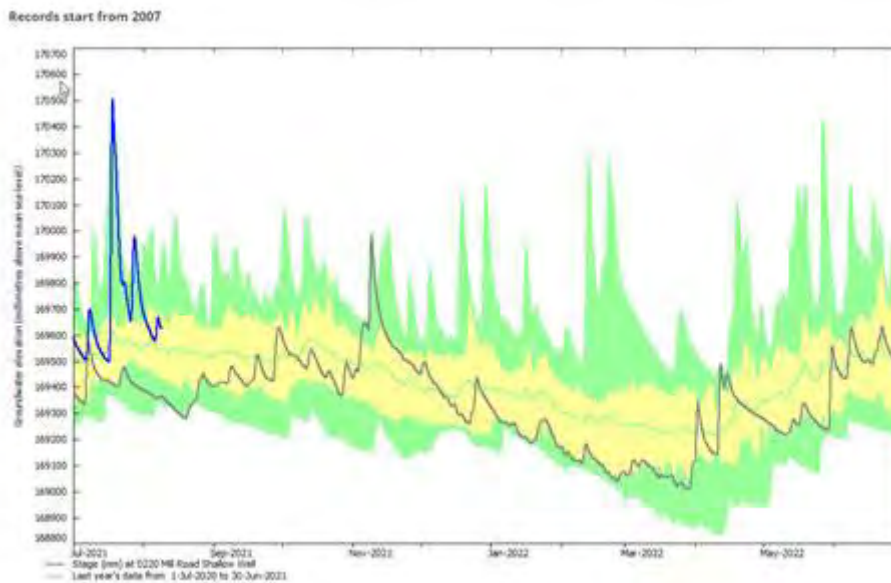


**Figure 18: Semi-confined Omaka River Aquifer representing lower reaches of system south-west of Renwick at MDC Well 1000-10231. The rise of three metres brings levels close to the historical winter/spring maximum but less than historical high based on record dating back to 1980. Omaka River flows were 10 times that of the Taylor River reflecting the influence of the higher rainfall in west.**



**Figure 19: Semi-confined Omaka River Aquifer representing lower part of system at Woodbourne. Groundwater levels at MDC Well 3010 in Jacksons Road rose by ~2.5 metres as a result of the rain associated with the July 2021 flood event. Levels within 0.5 metres of maximum observed based on record dating back to 1996 at this site.**

### Wairau Valley lower terrace gravels aquifer



**Figure 20: Aquifer levels rose by ~1 m. to an all-time high elevation at MDC monitoring Well 220 at Mill Road representing shallow, semi-confined aquifer gravels on lower terrace. This reflects location of well within area of highest rainfall opposite Richmond Ranges.**



## Waikakaho River Valley gravels

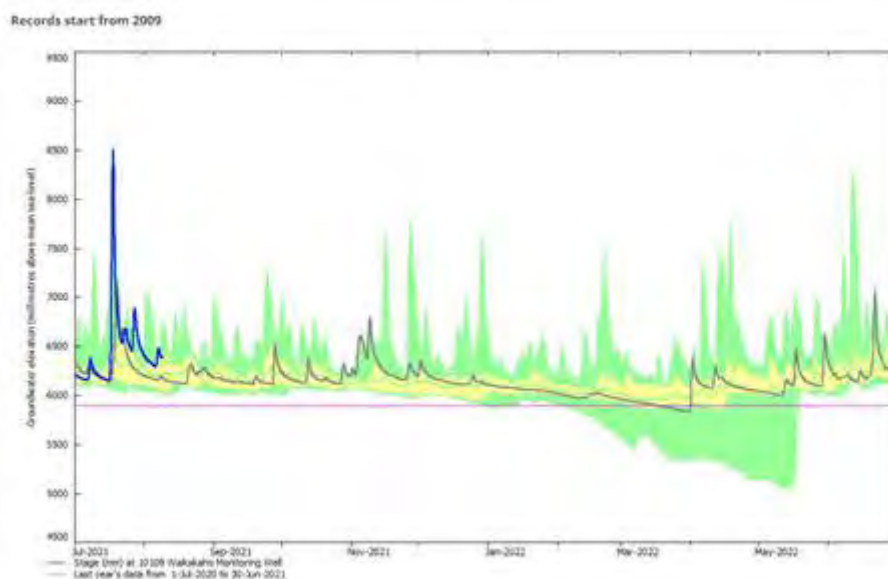


Figure 21: Groundwater levels rose by ~2 metres and reached a maximum elevation at the MDC monitoring well 10109 based on record from 2009. This reflects influence of the Waikakaho River channel flow nearby on alluvial terrace.

Aquifer/sector	Change in groundwater level due to 17/7/21 storm (m.)	Approximate recharge area of aquifer/sector (ha)	Porosity (%)	Change in storage volume (m <sup>3</sup> )
Wairau Aquifer unconfined Sector	2	3000	0.1	6,000,000
Wairau Aquifer semi-confined Sector	1	4000	0.01	400,000
Wairau Aquifer confined Sector	1	7000	0.00001	700
Riverlands Aquifer	1	1500	0.00001	150
Benmorven Aquifer	-	1000	0.00001	-
Brancott Aquifer	-	1000	0.0001	-
Omaka Aquifer	3.5	1300	0.0001	4,550
Fairhall River gravels Aquifer	0.4	200	0.1	80,000
Omaka River Aquifer shallow layer	0.8	300	0.1	240,000
	2.5	1100	0.01	275,000 (515,000)
Omaka River Aquifer	3	1200	0.001	36,000

deeper layer				
Wairau Valley lower terrace groundwater resource	1	2000	0.1	2,000,000
Rarangi Shallow Aquifer	0.75	1300	0.1	975,000

Table 1: Calculated increase in natural groundwater storage associated with 17/7/2021 storm

## Freshwater Education Programme (20-21)

(E340-001-004-04)

(Report prepared by Peter Hamill)

Anna Crowe, our Freshwater Educator delivered the Freshwater Education Programme to an estimated 780 students ranging from Years 1 to 13 in the in the 2020-2021 financial year, as well as 85 teachers, support staff and parent-helpers. Students from 14 of Marlborough's schools were involved: Redwoodtown, St Mary's, Blenheim, Mayfield, Fairhall, Seddon, Witherlea, Rapaura, Canvastown, Richmond View, Springlands and Renwick schools, Marlborough Girls' College, Queen Charlotte College and a group of home-schooled students.

Stream studies were the most popular sessions, and these mainly took place at Mill Flat (Pine Valley) while students were on camp, and in the Taylor River. Pukatea Stream (White's Bay), Waitohi Stream, the Te Hoiere/Pelorus River and small streams at Witherlea and Renwick schools were also studied.

Sessions on stormwater and urban streams (the Drain Game), native freshwater fish, and river catchments and pollution, along with mentoring individual student projects and participating in Q & A sessions were included in the programme. Anna developed and ran a new session called the "Taylor River Hikoi" which is essentially a guided walk along the Taylor River that includes teaching and learning about the history, biodiversity and water quality of the river as well as opportunities to connect with nature and do some creative writing activities.

## Progress Report -LiDAR Project

(C315-19-015)

(Report prepared by Matt Oliver)

Council has received the first section of its province-wide LiDAR coverage. The Priority One area over the Sounds and Wairau areas are now completed and available on the Council GIS servers (Figure 1). The data will be publicly available by the end of August once uploaded to the LINZ Open Data Portal.

The LiDAR project has made slow but steady progress following the approval and contracting of the project in late 2019. Marlborough was very lucky to have a large part of this area flown during the COVID-19 lockdown period. This was due to the prevailing fine weather over this period and due to restrictions on pilots flying to airports other than their Nelson home base.



**Figure 4: Completed LiDAR capture area.**

Following Priority area 1 data capture, a long processing and quality assurance process was undertaken to ensure the data was fit for purpose. At the same time data capture of the remaining Priority 2-4 areas has proceeded (Figure 2 and Table 1).

Council has received several enquiries about the progress of this work and the delivered data is expected to be used by several parties besides Council in the coming months. Forestry planning is an important end use for the data. GNS Science will also be utilising the data to help document and understand the mechanisms of land sliding that occurred during the recent storm events.



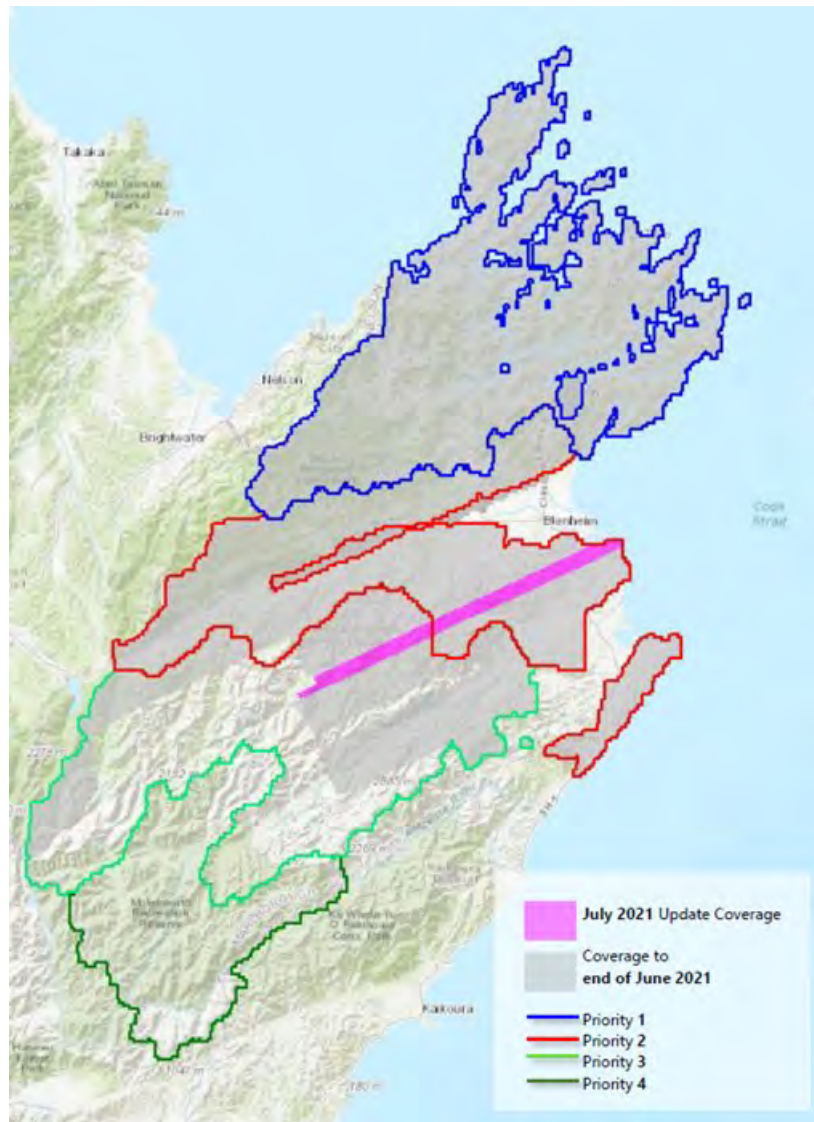


Figure 5: LiDAR coverage to end of June 2021

Priority Area	Coverage (km <sup>2</sup> )	Coverage (%)
P1	3,502.0	100
P2	2,565.0	99.1
P3	1,701	↑ 50.9
P4	0.0	0.0
Ops Variation #1	157	100

Table 1: Coverage percentage for main priority areas

## 17 July Storm – Post - Event modelling and landslide monitoring. (E385-003-002) (in due course)

### (Report prepared by Matt Oliver)

Following the storm event of 17-19 July 2021, a post-storm modelling work stream has commenced in the Land Resources section. This workstream is partly to continue Councils previous record of reporting on the effects of storms in the region and also to commence work on an action recommended by the Te Hoiere Project. This work seeks to build on existing flood documentation to develop a plan to monitor the effects of storm events. The work seeks to utilise a set of recently available tools such as LiDAR and rain radar imagery. Council has joined with GNS science to investigate the landslides that have resulted in damage to structures in the region.

### Rain Radar Imagery

After the event, a rain radar imagery viewer was developed by Rachel Baggs using Qlik Hub. This software can take the continuous data stream from Metservice and break it into a large number of virtual rain gauges spread across the landscape. This data stream is corrected to match actual rain gauges. Rachel's viewer is able to be calibrated according to rainfall total amounts (Figure 1 and 2) and by rainfall intensity (mm/hr- Figure 3 and 4). It can also be used in time-lapse video mode.

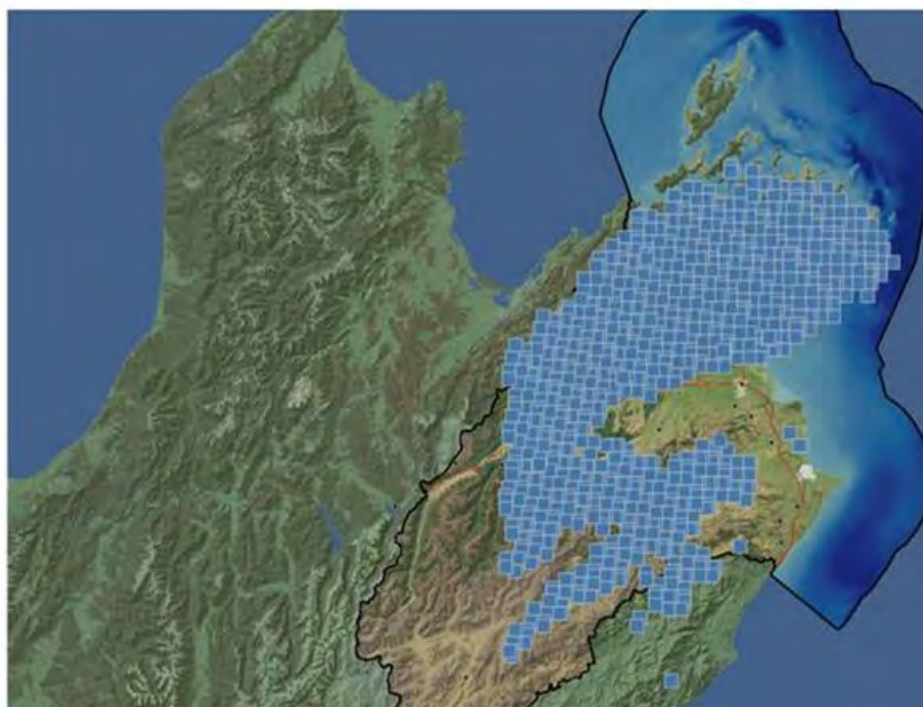


Figure 1: Virtual rain gauges where more than 100mm of rain fell across entire event.

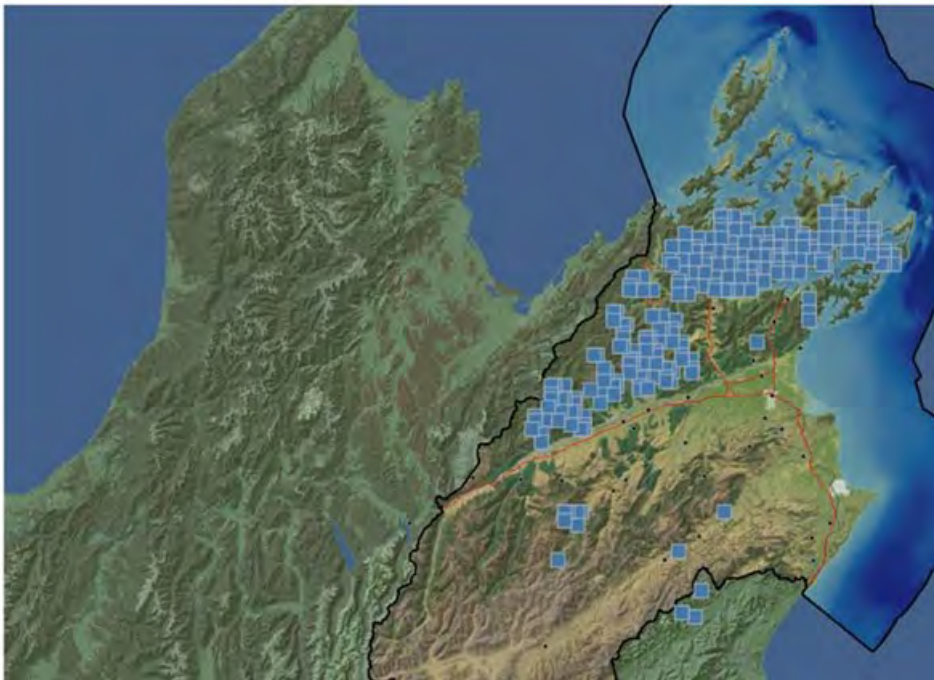


Figure 2: Virtual rain gauges where more than 200mm of rain fell across entire event.

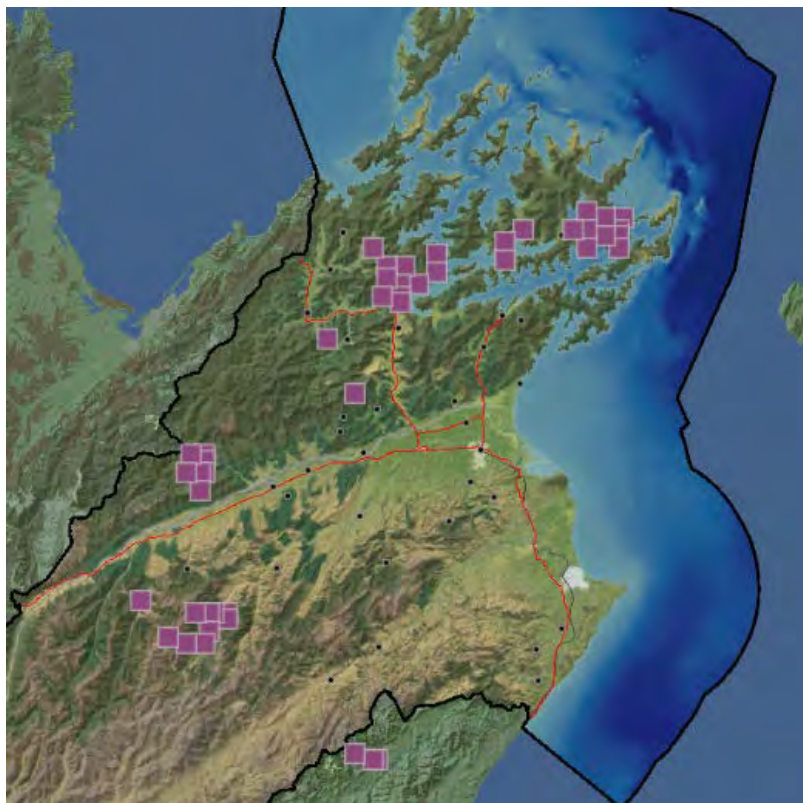
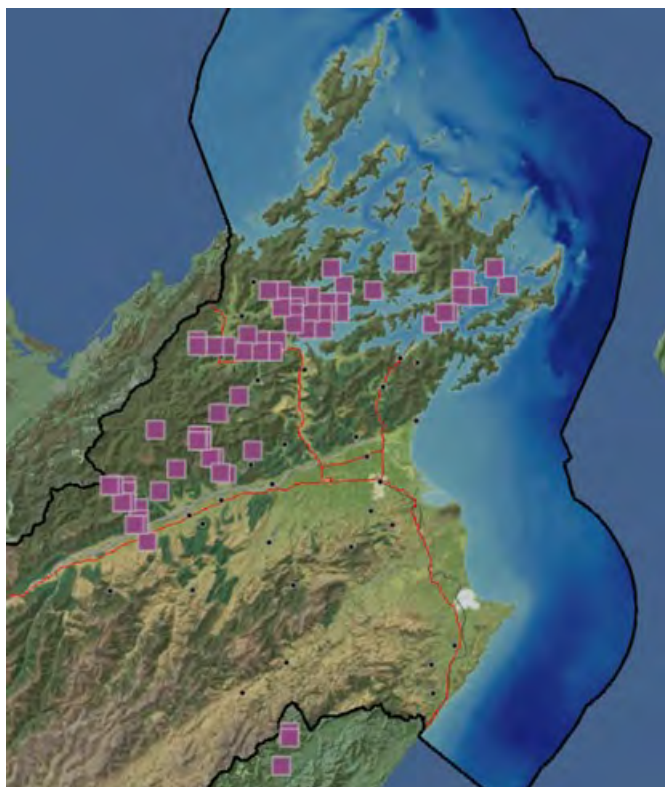


Figure 3: Rain Radar imagery for 4am 18 July. Purple squares represent virtual rain gauges reporting >15mm/hour rainfall.





**Figure 4: Rain Radar imagery for 9am 18 July. Purple squares represent virtual rain gauges reporting >15mm/hour rainfall.**

While this tool was developed after the event, in future it could be used to provide near real-time updates on rainfall across the region to flood emergency managers. In this case, the rain radar viewer was used to guide helicopter inspections for landslides and property damage. The viewer was set to report the areas where total rainfall was greater than 200mm and where rainfall exceeded 15mm/hr for prolonged periods.

### **Landslide Inspections**

The rain radar imagery was used to guide a landslide inspection flight across the areas noted to have received the greatest total rainfall and greatest intensity. The inspection flight (Figure 5) took place on 28 July 2021. Council partnered with GNS Science for the flight and subsequent land-based inspections. Landslides were observed on a range of land uses and terrains. Initial assessments would indicate that landslides were common but smaller scale on farmed and recently harvested forest land. Larger slips and debris flows were observed in both mature native and exotic forest (Figure 6). Some areas that received very heavy rainfall also showed much less damage than expected (both native and exotic forest).



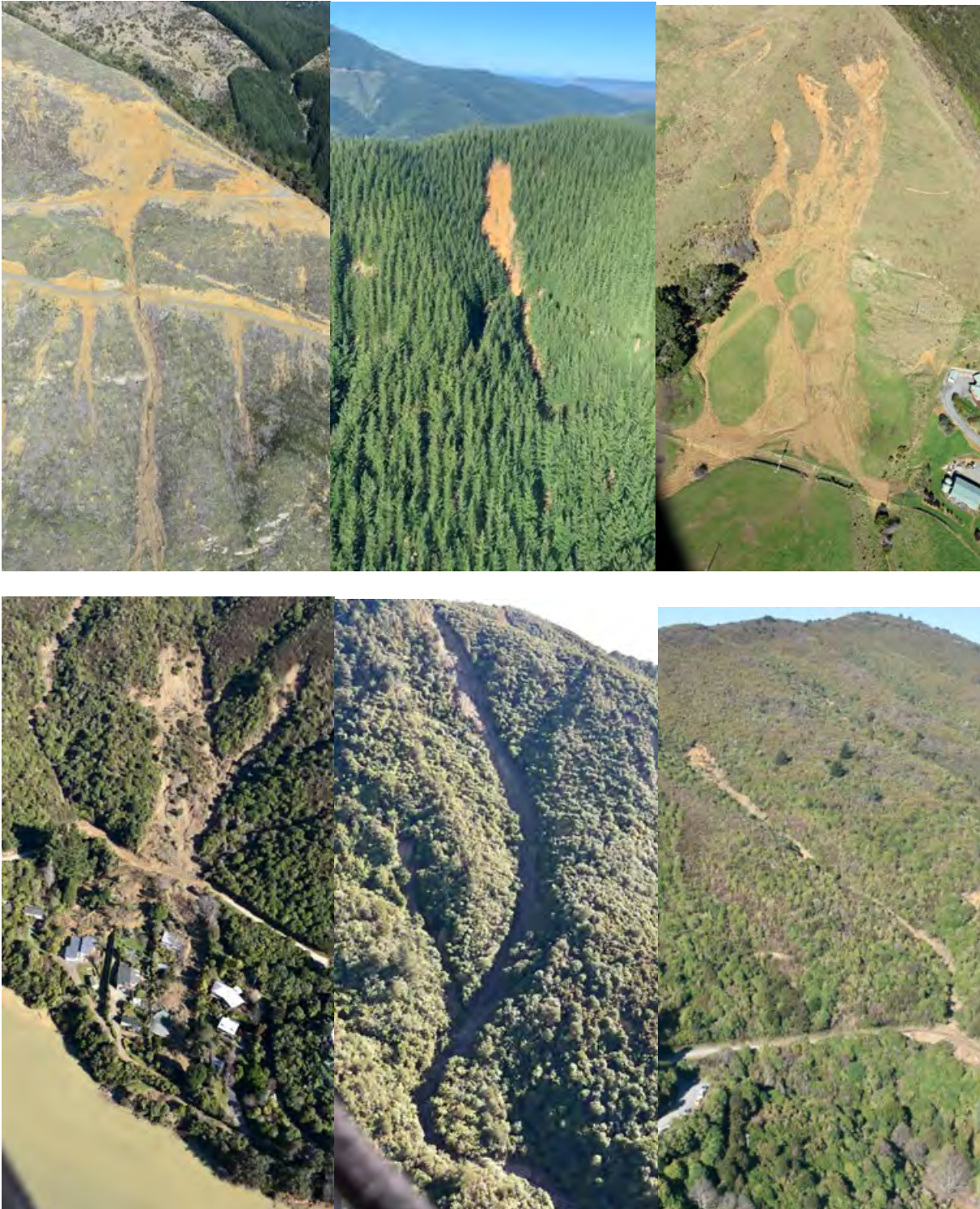
**Figure 5: Helicopter flight track 28 July 2021**

Approximately 2500 images were taken during the flight and these will be geolocated over coming months to create a record of the location of the landslides. This data will be used by GNS Science to feed into their Rainfall Induced Landslide register and to help boost the development of landslide predictive models. University of Canterbury will use the data to help validate the recently developed debris flow model and Landcare Research are interested in using the data to investigate smaller-scale mid-slope failures.

Onsite inspections of landslides that resulted in damage to buildings was carried out with GNS Science. This inspection looked at the source of the landslide, runout of debris, and extent of damage to the buildings. The damage measurements are used to verify the speed and volume of debris from the landslides. Some debris flows are initially assessed at exceeding 20m/s velocity (72km/h).

During the ground inspections GNS gathered drone footage and ground measurements of the landslides to enable 3D model construction and determination of the potential causes of landslides. Common causes of debris flows appear to be deep-seated slope failures where heavy rainfall has overloaded the surface soils and caused slippage along bedrock shear planes. The results of these measurements will be outlined to Council in a storm report to be prepared by GNS science. This report is not expected to be available for some months due to heavy workloads for GNS staff following the recent Canterbury and Westport storm events.





**Figure 6: Variety of landslides in differing landuses and terrains. From top left: Onamalutu forest cutover, Koromiko mature forest, Linkwater farmland, Pukenui regenerating scrub, Moenui mature bush, Havelock.**



## Te Hoiere Pelorus Restoration Project Update

(C315-21-045)

### (Report by Heli Wade)

The last 6 weeks have been a chance for everyone to take a moment to reflect on the work we have done up to now and rest until the next push for the Project. Much awaited injection of funding to our project and completion of our Integrated Catchment Enhancement Plan (ICEP) will now lead us into Project implementation and delivery.

### Integrated Catchment Enhancement Plan (ICEP)

Our celebration of the ICEP draft was very successful. Over 60 people attended the event, the technology worked well at the Trout Hotel, transfers to Kahikatea Flat went smoothly, the korero was heartfelt and the soup and cakes were delicious. Our special guests included Mayor Leggett, Deputy Mayor Taylor, community members and horticultural students from Ngāti Kuia, Native Nursery Project.



Te Hoiere ICEP celebration crew at Kahikatea Flat 28/07/21 (Photo by Melissa Banks)

Work to finalise our ICEP is under way, some images and text still need updating before public release.

Next steps for the implementation of the ICEP:

- Discover capacity and any gaps in the steering group to lead on workstreams and allocate responsibilities.
- Circulate ICEP to public
- MfE to contract quick win projects prior to signing funding agreement to enable work to start
- Draw up and sign funding agreement with MfE
- Further implementation of action plan to follow

### Funding

Our jobs for Nature funding agreement is waiting for ministerial announcement.

### Te Hoiere legal entity

New version of the Te Hoiere Kaitiaki Charitable Trust has been shared with Governance Group members for approval and sign off.

MfE is currently organising training for the new Trustees under the New Zealand Institute of Directors training programme with recommendation forwarded to Governance Group.

# Marlborough Landscape Group

Meeting minutes from 11 June 2021

C230-001-M05



## MINUTES

---

**Marlborough Landscape Group, held on Friday 11 June 2021 at 2.00 pm in the Committee Room, Marlborough District Council**

### Present

Clr Jamie Arbuckle (Co-Chairman), Tim Newsham (Co-Chairman), David Dillon (Federated Farmers), Helen Ballinger, Alan Johnson, (Marlborough District Council), Siobhan Allen (Forestry), Chris Beech, **Clr Barbara Faulls, Mondo Kopua (Winegrowers), LinLin Yang (Plant & Food Research)**, Bev Doole (**Coordinator**), Bernadette Brooklands (Secretary, Marlborough District Council).

**Apologies:** David Aires (Rivers Engineer), Peter Hamill, Jan Johns (Farm forestry), Richard Hunter. Alan Johnson joined the meeting at 3.04 pm.

**Guest:** Jane Tito, Manager of Parks and Open Spaces

### Welcome

Clr Arbuckle gave a warm welcome to the new member representing Marlborough Winegrowers, Mondo Kopua. Members introduced themselves to Mondo.

### Confirmation of minutes of previous meeting

Moved Clr Arbuckle / Seconded Siobhan Allen: "That the minutes of the previous meeting held on 16 April 2021 were a true and accurate record of the meeting".

### Carried

### Actions and Matters Arising from the April Meeting

- *Airport Carpark expansion landscaping:* Helen, Richard and Bev held a Zoom meeting with project manager BECA and a revised plan was prepared for the June MLG meeting. There is still concern about loss of established trees along northern boundary and lack of taller shade trees in the car park. A site visit will be held to view the trees and propose adjustments to the landscape plan. Iwi landowner and councillors on the Airport Board will be invited. Timeline for finalisation of landscaping plan will be requested from Airport CEO Dean Heiford. Clr Arbuckle and Clr Faulls had updated councillors at the recent environment committee meeting about MLG concerns.
- *Giesen replanting:* Giesen wrote to the Rivers Department to try to make progress and have plantings completed this winter. Alan reported that staff member Steve Bezar has been appointed to liaise with Giesen over appropriate plants and siting.

Action Point	To do	Who	To Do/Completed
1	Send group member emails to Heli Wade for contact purposes.	Bev	Completed
2	Meet with BECA regarding the airport carpark species selection	Bev, Helen, Richard	Ongoing
3	Arrange site meeting with Geoff Dick re the Giesen replanting at Riverlands	Bev and Clr Arbuckle	Rivers now liaising with Giesen
4	Diagram of Council sub committees and project groups involved in work relevant to Marlborough Landscape Group	Alan	Ongoing
5	Arrange Linda Craighead for June meeting to speak on Wither Hills Farm Park plan review	Bev	Ongoing
6	Circulate updated work plan	Bev	Completed
7	Sub groups to meet and prepare ideas/actions to report back to June meeting. Industry members continue liaison with their groups.	All members	Completed
8	Reconnect with Rangitane.	Tim and Richard	Ongoing
9	Email to Jane Tito: Prince Philip memorial tree suggestions, and how can group can help publicise Kahikatea reserve and public access.	Bev	Completed
10	Arrange field trip to show forestry landscape issues and good practice. Work in with industry field day.	Siobhan	In progress
11	Arrange for Glenda Barnes to speak about glyphosate alternatives	Tim	Carried over to August

## Correspondence

Linda Craighead – Review of Wither Hills Farm Park management plan. Work has not yet begun on this. MLG will be consulted later in the year.

Chris Beech – Greening Blenheim opportunity at Marshall Place. There are limits to further native forest plantings due to flood control priorities. Forest & Bird is already working with Council to improve this area with pathways, signage and maintenance.

### 1. Marlborough Landscape Group 2021-22 Work Plan

#### **Work Stream 1: Climate change/Greening Blenheim Sub Group Report – Clr Arbuckle**

- May 31 meeting with Climate Karanga Marlborough (CKM): The meeting explored what the two groups had in common, and how could they work together or support each other in the future. It would be best to identify areas that maximises inputs from the two groups.
- Climate Karanga's focus is on energy use and how to be more efficient and use environment friendly energy sources rather than traditionally high fossil fuels. A discussion around Marlborough Airport followed. While efforts by the Landscape Group to advocate for tree plantings for shade and carbon sequestration were acknowledged, Climate Karanga's initial view was why have more car parks that encourage more car use, more planes and more emissions. Improved public transport would be a better alternative.
- Climate Karanga is interested in large-scale permanent plantings for mitigation, such as Wither Hills. Could also see potential for Wairau River Regional Park.



- There is a willingness to work together. Scale and symbolic nature of any projects would be important factors. It was agreed the Climate Change/Greening Blenheim sub group would identify areas of common interest and report back to Climate Karanga with possible projects for further discussion.
- Greening Blenheim: proposal for planting a local native forest to provide shade, carbon sequestration and a bush experience. Several options were discussed.
  - A native forest within walking distance of Blenheim. Marshall Place was found not to be suitable but Shep's Park in Springlands may be a possible site
  - A native forest where plantings are sponsored by the local wine industry (see LinLin's PowerPoint presentation attached)
  - A site across SH1 from Kahikatea Reserve. Tim pointed to several hectares of Council land east of SH1 and north of the Spring Creek.
- Jane Tito, Manager of Parks and Open Spaces, will come back to the group once she has investigated places where a substantial area of native plantings could potentially be situated. There are limited spaces due to floodways on current bare land. She suggested the Group also approach the Rivers Section.

### **Work Stream 2: Te Ao Maori**

- Richard and Tim to renew contact with Rangitane

### **Work Stream 3: Advocacy with industry groups**

- Farming: Encouraging tree planting on farms – a field trip will be arranged in autumn 2022 to David Dillon's property, The Throne, aimed at showing farmers the value of amenity and plantation plantings and what funding is available.
- Winegrowing: The Wine Marlborough Board is interested in the Wairau River Regional Park project and would like to be consulted on what planting possibilities may be available to the industry. Mondo requested a one-page info sheet for vineyard owners on key contacts for biodiversity and grants.
- Forestry: Siobhan is working to set up a forestry visit that includes topics relevant to industry and the Landscape Group, for a combined and productive session. Ideas include post-harvest management, riparian buffer strips, benefits of protecting native bush areas alongside plantation forestry.

### **Work Stream 4: Wairau River Regional Park**

- Cllr Arbuckle and Cllr Faulls reported that there were a number of submissions relating to the Wairau River Regional Park during Council's Long Term Plan hearings and the project is now embedded in Council thinking. Tim will follow up with Richard Coningham for a progress report on iwi co-management and the appointment of a contracted project manager to develop a management plan.

### **Work Stream 5: Go Green not Brown**

- Glenda Barnes, co-ordinator of Kaikoura Green Party, will give a presentation at the August meeting on alternatives to glyphosate. LinLin noted that Plant & Food are doing trials on low-growing natives to suppress weeds in vineyards rather than use weed spray. Mondo said growers would welcome practical information and advice.

## **2. Update from Parks and Open Spaces**

Parks and Open spaces manager Jane Tito discussed the canopy count in Blenheim with 19,000 trees counted and data kept on which species of trees Blenheim has. There are still more trees to be captured.

- *Kahikatea Reserve public access and signage*: Council has negotiated a public walking/biking access strip parallel to SH1 from the Wairau River stopbank to the Kahikatea Reserve. This was in exchange for vineyards being planted over paper road. Signage for the reserve is being worked on and a maintenance plan is needed. Old Man's Beard is an issue in the Reserve and MLG members pointed out areas of concern for control. There is an opportunity to approach the vineyard owner about planting shade trees between the accessway and vineyard to try to soften the industrial nature of the extensive vineyard plantings.
- *Alternatives to glyphosate*: Parks and Open Spaces is working towards being glyphosate free. Seymour Square has been free of glyphosate for approximately 12 months, with weeding done by hand and some organic spraying. A progress report is being prepared on this. Glyphosate use has

been reduced at Pollard Park, from 10L a year to 6L a year, and the aim is to move to organic methods. Council contractors are also reducing their use of the spray. A Nelmac trial using pine oil proved to be more expensive and not particularly effective and the company is trialling another alternative in Motueka. A trial using steam was not effective. MLG members urged Council to continue to lead by example, set standards for contractors and raise awareness.

### **3. General Business**

- Alan requested an information paper for the July 14 Environment Committee meeting on the MLG 2021-23 Work Plan. Bev will prepare this. Members were urged to attend the short presentation.
- Mondo suggested a presentation to the Group from Wendy Sullivan, regional co-ordinator for the NZ Landcare Trust, about her role and possible synergies with the Landscape Group.
- Registrations are due for the Garden Marlborough Fete information stand. It was decided that MLG's new projects are not far enough progressed to warrant attending this year. Cllr Faulls suggested using social media to connect with the public and like-minded groups. She will discuss with the social media team at MDC.

**Next meeting: 20 August 2021**

#### **Actions from the June meeting:**

<b>Action Point</b>	<b>To do</b>	<b>Who</b>
1	Create List of key biodiversity contacts for Winegrowing members	Bev/Mondo
2	Research options on where a significant area of native bush could be planted on Council reserve in Blenheim.	Jane Tito
3	Reconnect with Rangitane representative Sally Neal.	Richard/Tim
4	Diagram of Council sub committees and project groups involved in work relevant to Marlborough Landscape Group	Alan
5	Arrange Linda Craighead to speak on Wither Hills Farm Park plan review	Bev
6	Arrange field trip to show forestry landscape issues and good practice. Work in with industry field day	Siobhan
7	Arrange Glenda Barnes to speak about glyphosate alternatives at the August meeting	Tim
8	Arrange site visit to airport. Invite Airport Board councillors (Cllr Oddie, Cllr Peters and the Mayor) and iwi landowner to join MLG members Helen, Jan, Chris and Richard.	Bev/Richard Hunter
9	Email Dean Heiford re timeline for confirming carpark landscape plan	Bev
10	Contact Richard Coningham (MDC) to find out progress on Wairau River Regional Park	Tim Newsham
11	Wendy Sullivan, Landcare Research, to August meeting to give a presentation on her role	Bev
12	Contact the MDC social media team about opportunities to publicise MLG and projects	Cllr Faulls



- Encourage wineries to donate some trees and do a planting day



- More than 30 wineries in Marlborough

- Why should wine company participate?



- Opportunity for the biggest regional industry to benefit local community
- More publicity of wine brand to locals and international tourists – wine label displayed at the planting area or on the tree.
- Tasting room at enter showing participants' wine
- Unique experience of relaxing with a glass of wine in the forest





# Building Control Group

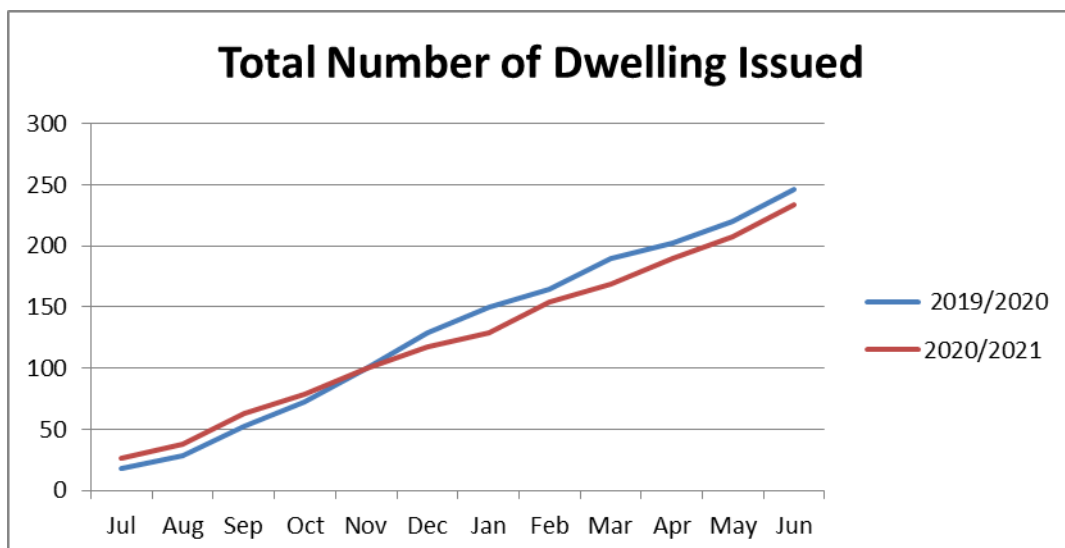
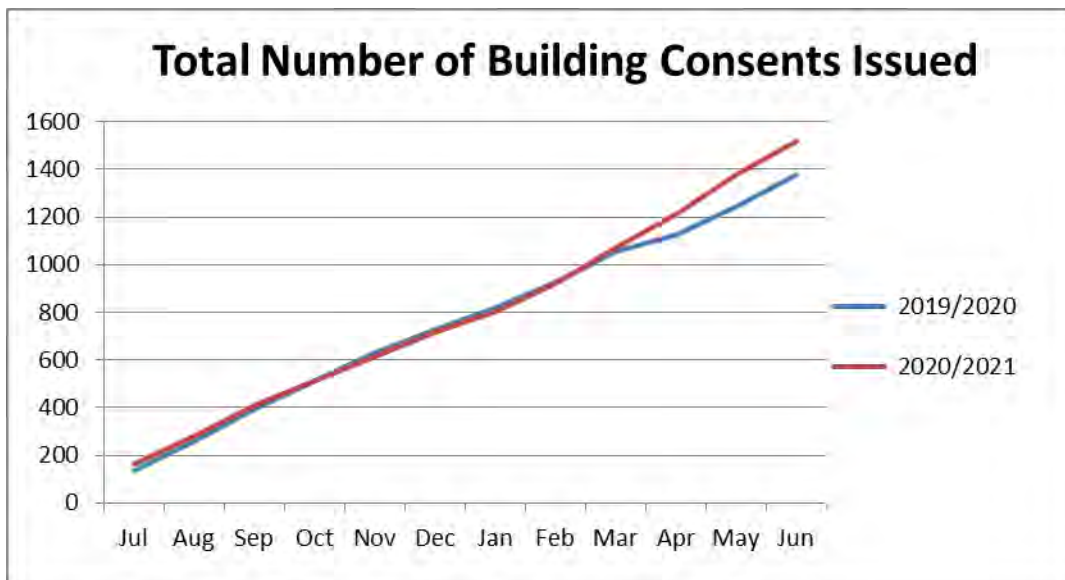
---

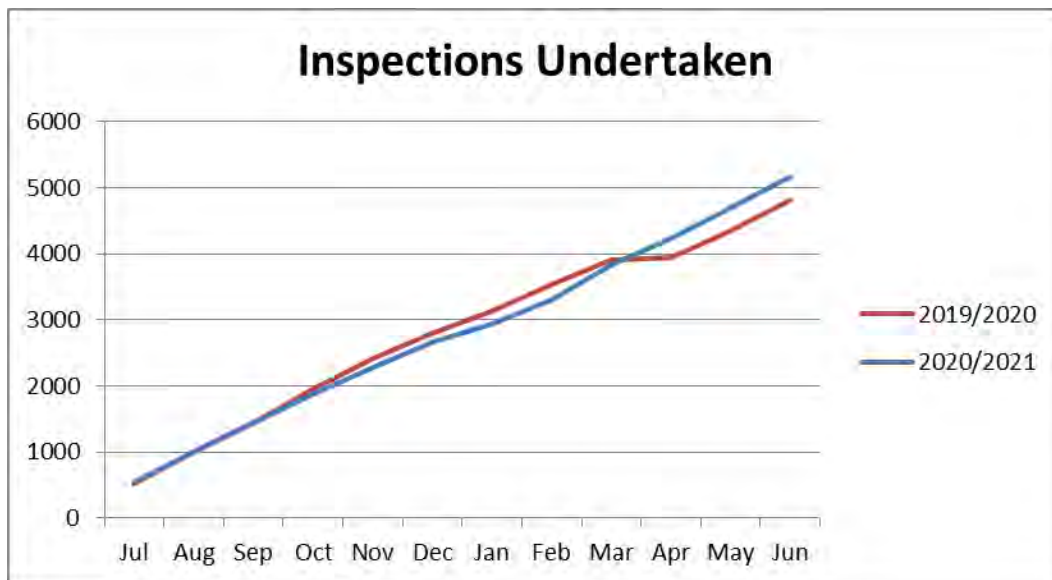
## Building Control – Building Consent Authority (BCA) & Territorial Authority (TA) Activity for July 2020 – June 2021

The 2020/21 Building Activity across the group functions as a BCA and a TA continued to increase in comparison with the previous twelve months. The value and the number of building consent applications were both higher than the last. The number of houses that were consented was slightly down on last twelve months and this may be a reflection on the limited number of properties on the market.

There was more demand for building inspections than the previous twelve months. However, the factor that there were no inspections undertaken during level 4 lockdown last year is to be considered. This is reflected in the graphs below.

In the last twelve months several large value consents for residential and commercial buildings have been granted. The library which is now in construction phase is one of these projects. In comparison with last year there was an increase of value of consents issued by \$30,000,000. The increase in value may have been influenced by the price rises of most building products. Building product prices have increased as a result of global supply chain issues and the lack of domestic timber production capabilities.





## Building Control - Building Consent Authority (BCA) & Territorial Authority (TA) Activity for June 2021.

### Building Control Activity for June 2021

#### Total Consents issued

- Total of 140 consents, with a total value of \$15,794,136.
- This total included 15 new dwellings, with a value of \$6,065,693.17

#### Total Consents received

- Total of 142 consents, with a total value of \$18,285,092.96
- This total included 24 new dwellings, with a value of \$12,330,874

#### Processing stats for June 2021

- For the month of June, the Building Control group issued 140 consents. 97% of the building consent applications were issued within the required statutory times frame of 20 days. The average processing time was 11 days.

The contributing factors that statutory timeframes were exceeded were due to a building control officer resigning to work in the private sector and a staff member on extended sick leave. A new building control officer has since been employed and starts on the 9<sup>th</sup> August. The staff member that was on extended sick leave is now back at work.

#### Inspections undertaken June 2021

- A total of 482 inspections were undertaken, with an average booking time of 3 days.

### Territorial Authority Function Statistics

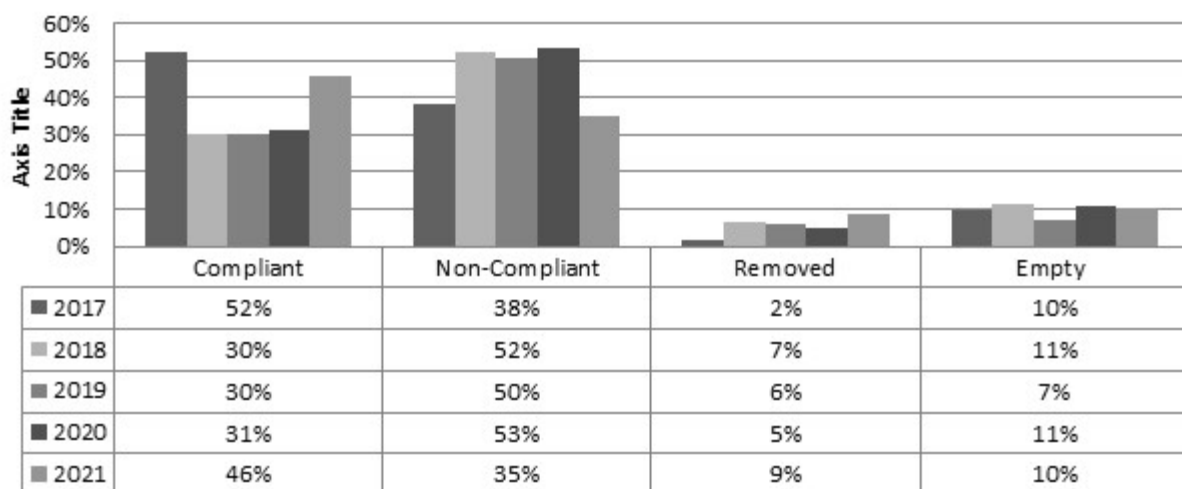
#### Pool Compliance for 2021

Figures represent the 2021 calendar year (33.3% of all pools) inspection requirements

		Recheck inspections results	
Pass	114 - (46%)	Pass	53
Fail	88 - (35%)	Fail	1
Pools Removed	22 - (9%)	Second re check Pass	1

		Recheck inspections results	
Empty	26 - (10%)	Inspection outcome resulting in the need for a Building Consent or a Certificate of Acceptance	2
Total Inspections completed to date	250	<b>Rechecks required from this year's inspection</b>	
Inspection target for calendar year	55%	First recheck	33
Audits left for this year	204	Second recheck	0

### Pool Inspection outcomes - First Inspection 2017 to date





# Alcohol Licensing

---

**A100-04**

**Attached** is a schedule of applications for alcohol licences issued by Marlborough District Licensing Committee under delegated authority from 22 May 2021 to 31 July 2021.

**Alcohol Licences issued by the Marlborough District Licensing Committee  
From 22 May 2021 to 25 June 2021**

**Special Licenses**

<b>Licence Number</b>	<b>Applicant</b>	<b>Location</b>	<b>Event</b>	<b>Date/s</b>
SPC/047/2021	Friends At Bohally School	37 McLauchlan Street, Blenheim	Fundraising Quiz Night	Saturday, 26/06/2021
SPC/049/2021	Marlborough Bow Hunters Club	3241 Waihopai Valley Road, Waihopai	NZ Bowhunters National Tournament	Saturday, 5/06/2021
SPC/050/2021	Woodbourne 2010 Limited	76 High Street, Renwick	Outdoor events	Sunday, 6/06/2021, Friday 5/11/2021, Saturday 8/01/2022
SPC/055/2021	Elemental Distillers Limited	197 Rapaura Road, Rapaura	Pop Up Gin Bar	Friday, 11/06/2021
SPC/022/2021	Sahara New Zealand Limited	121 Aerodrome Road, Omaka	Classic Fighters Airshow	Friday 3 September, Saturday 4 September, Sunday 5 September 2021
SPC/046/2021	Blenheim Musical Theatre Incorporated	81A Lakings Road, Blenheim	Musical Theatre	June/July 2021
SPC/051/2021	Picton Little Theatre Incorporated	9 Dublin Street, Picton	Various events	June/August and November 2021
SPC/054/2021	Sahara New Zealand Limited	6 Kinross Street, Blenheim	Marlborough Home & Garden Show	Friday 9 July, Saturday 10 July, Sunday 11 July 2021
SPC/056/2021	Susan Melanie-Jane Glover	37 McLauchlan Street, Blenheim	Fundraising auction	Saturday 26 June 2021
SPC/057/2021	Blenheim & Districts Highland Pipe Band Inc	26 Havelock Street, Renwick	2021 Ceilidh	Saturday 17 July 2021

**New Premises Licences**

<b>Licence Number</b>	<b>Applicant</b>	<b>Licence Type</b>	<b>Premises</b>	<b>Expiry Date</b>
ON/016/2021	Pepi Hikoi Ltd	On Licence	Waitohi Sports Bar & Grill	18/06/2022

### Renewed Premises Licenses

Licence Number	Applicant	Licence Type	Premises	Expiry Date
OFF/016/2021	Seddon Supervalve Ltd	Off Licence	Seddon Supervalve	1/04/2021
ON/012/2021	Juliearna Janet Kavanagh	On Licence	Escape to Picton	23/04/2024
ON/013/2021	Redwood Development Ltd	On Licence	Redwood Tavern	8/05/2024
OFF/018/2021	Redwood Development Ltd	Off Licence	Redwood Tavern	8/05/2024
ON/015/2021	Raetihi Holdings Ltd	On Licence	Raetihi Lodge	13/05/2024
ON/003/2021	Fortuna Enterprises Ltd	BYO On	Four Seasons Shangai Restaurant	13/12/2023
OFF/020/2021	Glover Family Vineyards Ltd	Off remote	Glover Family Vineyards	14/05/2024

### Temporary Authorities

Licence Number	Applicant	Licence Type	Premises	Expiry Date
ON/008/2021	Sai Danish Trading Ltd	On Licence	Charcoal Indian Restaurant	31/08/2021
ON/024/2019	Vangalas Ltd	On Licence	The Tamarind Restaurant	7/09/2021
ON/017/2019	Beme Enterprises Ltd	O Licence	Figaros Cafe	30/09/2021

### New Manager Certificates

Certificate Number	Applicant	Premises	Expiry Date
CERT/040/2021	Wayne Williams	Jolly Roger Bar & Cafe	03-06-2022
CERT/049/2021	Ravinder Singh Chohan	Bamboo Garden Restaurant	03-06-2022
CERT/051/2021	Wendy Jane Sullivan	Waikawa Boating Club	03-06-2022
CERT/052/2021	Sussanne Marie Carrick	Cosy Corner	03-06-2022
CERT/053/2021	Matthew Stephen Ward	Catalina Sounds Limited	03-06-2022
CERT/054/2021	Lisa Wakeford	Waikawa Boating Club	03-06-2022
CERT/055/2021	Philippa Alice MacFarlane	Wino's Liquor	03-06-2022
CERT/056/2021	Franck Stephane Lambert	Raetihi Lodge	03-06-2022
CERT/058/2021	Naveen Reddy Yeleti	Charcoal Indian Restaurant	03-06-2022
CERT/044/2021	Cheryl Ann Mason	Texas Tea	18-06-2022
CERT/047/2021	Jackson Charles Matthews	Hotel d'Urville	18-06-2022
CERT/057/2021	Kerry John Barton	Quality Riverside Hotel	18-06-2022
CERT/060/2021	Alicia Bev Beavis	New World Blenheim	18-06-2022
CERT/061/2021	Alana Noelette Herdman-Cammock	Picton Fresh Choice	18-06-2022
CERT/063/2021	Juan Pablo Pontoriero	Furneaux Lodge	18-06-2022
CERT/064/2021	Nicola Margaret Coll	Awatere Golf Club	18-06-2022
CERT/065/2021	Susan Christine Parry	The Wine Station	18-06-2022



### Renewed Manager Certificates

<b>Certificate Number</b>	<b>Applicant</b>	<b>Premises</b>	<b>Expiry Date</b>
CERT/119/2015	Shirley Anne Haines	Countdown Springlands	15-05-2024
CERT/034/2020	Elsa Pauline Morel	Spy Valley Wines Limited	18-04-2024
CERT/041/2020	Penelope Claire Gluyas	Marlborough Tour Company	25-04-2024
CERT/042/2021	Tania Jean Herbert	Jolly Roger Bar & Cafe	30-06-2024
CERT/052/2017	Patricia Rose Pike	Lawson's Dry Hills Winery	23-05-2024

**Alcohol Licences issued by the Marlborough District Licensing Committee  
From 26 June 2021 to 31 July 2021**

**Special Licenses**

<b>Licence Number</b>	<b>Applicant</b>	<b>Location</b>	<b>Event</b>	<b>Date/s</b>
SPC/016/2021	Clos Henri Limited	639 SH 63, Wairau Valley	private wedding event- 2022	Saturday, 26/02/2022
SPC/052/2021	Garden Marlborough (2004) Incorporated	151 Rowley Crescent, Grovetown	Wine & Cheese Paring Workshop	Thursday, 4/11/2021
SPC/053/2021	Spring Creek Vintners Limited	92 High Street, Blenheim	Garden Workshops	Thursday, 4/11/2021, Friday 5/11/2021
SPC/058/2021	Nopera Bay Golf Club Incorporated	6718 Kenepuru Road, Kenepuru Sound	Golf events	Monthly from 27/06/2021 to Sunday 26/02/2021
SPC/059/2021	Blenheim Club Incorporated	92 High Street, Blenheim	private 40th birthday	Saturday, 10/07/2021
SPC/061/2021	Found Food Limited	19 Conders Bend Road, Conders Bend	Music shows	Friday, 2/07/2021 and 9/07/2021
SPC/062/2021	Johnson Estate Limited	26 Havelock Street, Renwick	Mid winter concert	Saturday, 3/07/2021
SPC/063/2021	Waikawa Boating Club Incorporated	Waikawa Marina, Waikawa Bay, Queen Charlotte Sound / Tootaranui	Private 60th birthday	Saturday, 14/08/2021
SPC/064/2021	Michael John Bann	31 Maxwell Road, Blenheim	Wine Auction	Tuesday, 27/07/2021
SPC/065/2021	Blenheim Club Incorporated	92 High Street, Blenheim	Hunt Club Ball	Saturday, 24/07/2021
SPC/066/2021	Tupari Wines Limited	Foster Street, Seddon	Documentary Premier Maunga to Moana	Friday, 30/07/2021
SPC/074/2021	Blenheim Club Incorporated	92 High Street, Blenheim	Starship Fundraiser	Saturday, 31/07/2021

## New Premises Licences

Licence Number	Applicant	Licence Type	Premises	Expiry Date
OFF/017/2021	Fresh Ettz Ltd	Off Licence	Picton Four Square	5/07/2022
OFF/019/2021	Bottle Opener Ltd	Off Licence	Wino's Liquor	5/07/2022
ON/019/2021	Marlborough Civic Theatre Trust Board	On Licence	Marlborough Events Centre	27/07/2022
ON/021/2021	Somkhuan, Sriyot & Thanida Phongphithak	BYO on licence	Thai Panda Restaurant	28/06/2022
OFF/022/2021	Neame Wines Ltd	Off licence-remote sales	Neame wines	5/07/2022
OFF/025/2021	Staete Landt Wine Co Ltd	Off licence-remote sales	Staete Landt Wines	27/07/2022
OFF/026/2021	Tiraki Ltd	Off licence-remote sales	Tiraki	27/07/2021

## Renewed Premises Licenses

Licence Number	Applicant	Licence Type	Premises	Expiry Date
CLUB/001/2021	Awatere Bowling Club Inc	Club Licence	Awatere Bowling Club	17/12/2023
ON/017/2021	KLJ Ltd	On Licence	Quality Riverside Hotel	28/04/2024
ON/018/2021	Trust Hospitality Ltd	On Licence	Hotel d'Urville	28/06/2021
ON/020/2021	Mantaray Holdings Ltd	On Licence	D'Urville Island Resort	12/04/2024
OFF/021/2021	Framingham Wines Ltd	Off Licence	Framingham Winery	19/05/2024
OFF/023/2021	Moa Brewing Company Ltd	Off Licence	Moa	18/05/2024
ON/022/2021	Jackson Estate Ltd	On Licence	Jackson Estate	31/05/2024
OFF/024/2021	Marlborough Wine Group Ltd	Off Licence	Marlborough Wine Group	29/06/2024
ON/023/2021	The Watery Mouth Café Ltd	On Licence	Water Mouth Cafe	13/06/2024

## Temporary Authorities

Licence Number	Applicant	Licence Type	Premises	Expiry Date
ON/032/2020	Kehu Lodge Ltd	On Licence	Rainbow Ski Field Cafe	30/10/2021

## New Manager Certificates

Certificate Number	Applicant	Premises	Expiry Date
CERT/059/2021	Tamara Suzanne Neame	Neame Wines Limited	05-07-2022
CERT/067/2021	Gurpreet Singh	Superliquor Springlands	09-07-2022
CERT/068/2021	James Joseph Butler	Seumus Irish Bar	29-06-2022
CERT/069/2021	Kelly Anne Godsiff	The Thirsty Pig Picton NZ	28-07-2022
CERT/072/2021	Brittany Deborah Hamilton	Marlborough Tour Company	29-06-2022
CERT/073/2021	Anastasia Lawrence Driver	Vines Village Cafe	29-06-2022
CERT/074/2021	Heidi Martha Abraham	Havelock Four Square	13-07-2022
CERT/075/2021	Ellarose Freya Hammond	Villa Maria Estate	27-07-2022
CERT/076/2021	Gavin Thomas Traill	Saint Clair Vineyard Kitchen	13-07-2022
CERT/079/2021	Ella-Beth O'Toole	Cork & Keg	13-07-2022
CERT/080/2021	Julee Ann Pillans	Renwick Sports & Event Centre	13-07-2022
CERT/081/2021	Donald James Beattie	Picton Four Square	13-07-2022
CERT/082/2021	Caroline Emily Baker	Scenic Hotel Marlborough	27-07-2022
CERT/084/2021	Jeannie Louise Moffat	Scott Family Winemakers	13-07-2022
CERT/085/2021	Damien Patrick Gillman	Marlborough College Old Boys Squash Rackets Club	27-07-2022
CERT/086/2021	Richelle Antolin Delavin	Chateau Marlborough	27-07-2022
CERT/087/2021	Lisa Moana Carver	Waitohi Sports Bar And Grill	27-07-2022

## Renewed Manager Certificates

Certificate Number	Applicant	Premises	Expiry Date
CERT/130/2015	Dianne Heather Black	Pak'n Save Blenheim	08-07-2024
CERT/135/2015	David John Nicholls	Not at present	30-06-2024
CERT/136/2015	Christine Lynn McGlynn	Gusto	10-06-2024
CERT/153/2015	Manpreet Kaur	The Portage	16-07-2024
CERT/059/2017	Leonie Christine MacDonald	Villa Maria Estate	26-06-2024
CERT/063/2017	Anneke Rose Malaquin	Pak'n Save Blenheim	27-06-2024
CERT/068/2017	Chanel Katherine Conner	Wairau River Wines	25-07-2024
CERT/083/2017	Paul James Frost	Marlborough Public House	28-07-2024
CERT/105/2018	Tania McDonald	New World Blenheim	19-07-2024
CERT/011/2020	Cindy Angela Anker	Not at present	17-06-2022
CERT/044/2020	Harriet Rose Wadworth	Two Rivers Marlborough	09-07-2024
CERT/045/2020	Joseph Alec Marshall	Liquorland	17-06-2024



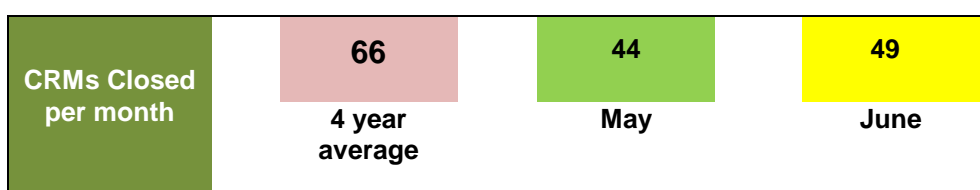
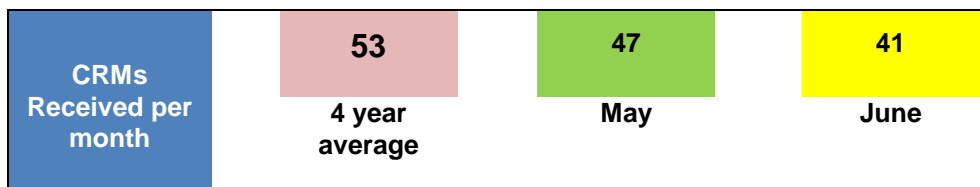
<b>Certificate Number</b>	<b>Applicant</b>	<b>Premises</b>	<b>Expiry Date</b>
CERT/046/2020	Nikita Sharon Maker	Cosy Corner	17-06-2024
CERT/057/2020	Michael Royston	Vintners Retreat	10-07-2024
CERT/060/2020	Ruby Kumari	Pinch of Spice	29-06-2024
CERT/074/2020	Manmohan Singh Sajwan	Pinch Of Spice	31-07-2024
CERT/077/2021	Jason Douglas Cleverley	Punga Cove	20-08-2024
CERT/078/2021	Sajish Palakkal Jamal	The Lemongrass	24-06-2024

# Compliance Group

(Report prepared by Jamie Clark)

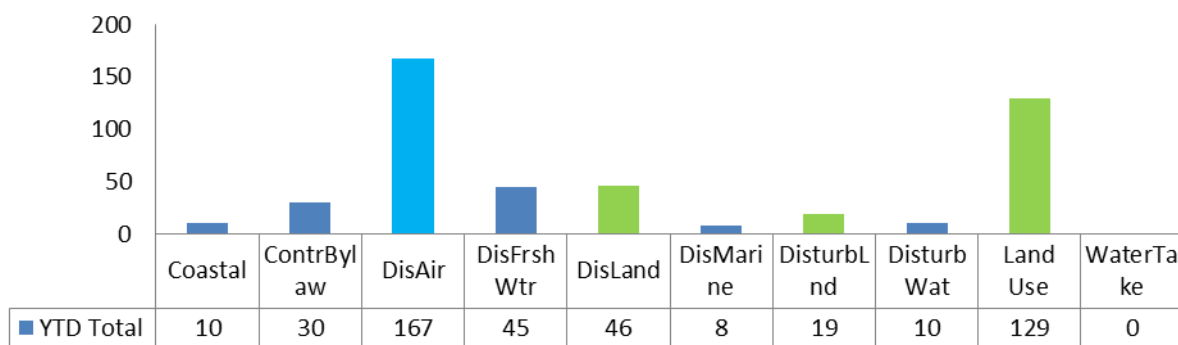
## Environment Protection Section

**CRMS Received** for period of May & June 2021 which also includes the average number of CRMS received over the period 2017-2020



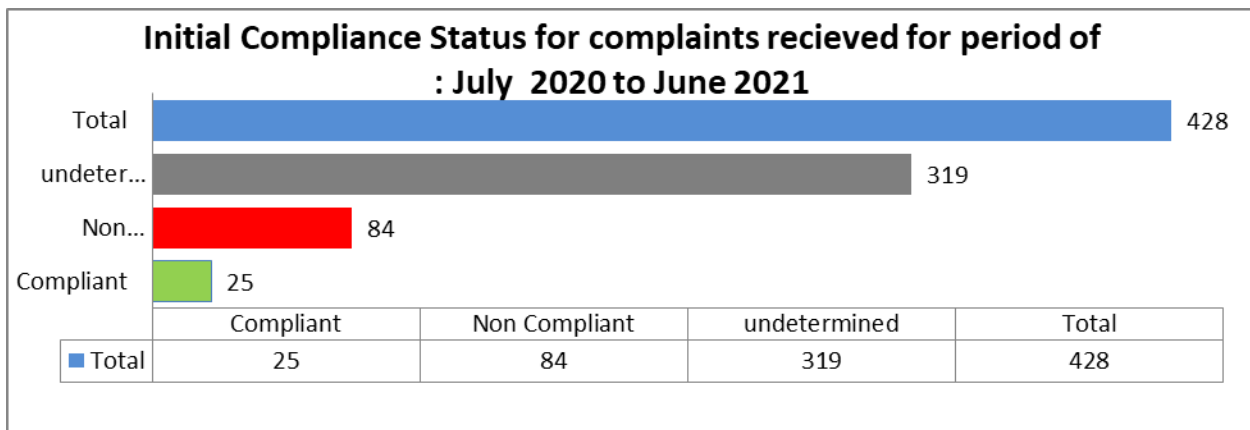
**CRMS Closed** for period of May & June 2021 which also includes the average number of CRMS received over the period 2017 to 2020

## Type of RMA Complaints Received YTD (July 2020 - June 2021 Total)



### Commentary

For the month of June 2021 greatest number of complaints received were for Discharge to Air followed by land use.



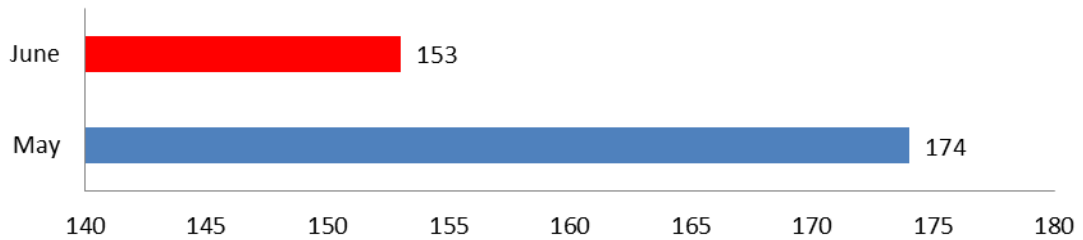
**Active Court Cases** – The Compliance Group still have a number of matters that are currently before the court.

No.	Parties	Case	Outcome
1	<b>The Queen V Gifford</b>	Hearing held and decision made by Judge Harland on 4 November 2019 that two of the charges under Section 15(1)(d) are to be dismissed. The remaining charges to progress to trial.	New date to be set
2	<b>MDC V Gifford / 15<sup>th</sup> Valley Farm Limited</b>	Discharge Contaminants / Land use. A Disputed Facts Hearing was abandoned and was being rescheduled however defence is making application to withdraw guilty pleas which Council has opposed. Judge to review applications	No date yet set.
3	<b>MDC V Gifford, CRN Transport 15<sup>th</sup> Valley Farm Limited</b>	As outlined in case 2.	
4	<b>The Queen V A Yealands, P Yealands, Richard Evans, Smart Alliances &amp; Growco Limited</b>	Land use Leachate Discharge – Trial by Jury. Legal Arguments to be heard in 2021.	Possible dates 6 <sup>th</sup> and 13 <sup>th</sup> December 2021.
5	<b>MDC V P Yealands</b>	Defendant requested a court hearing in relation to two infringements issued for offences under the Resource Management Act 1991 namely placing a structure or culvert in a river bed and excavation of a riverbed.	Hearing held on 25 January 2021 but adjourned to 10 March 2021 for s147 application decision to be made. <b>No decision has yet been made.</b>

## Monitoring

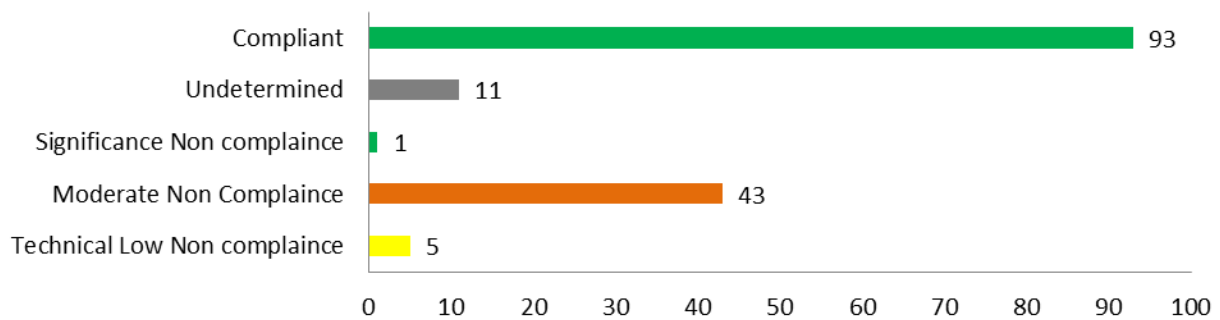
Number of **Consents Monitored** for period of May & June 2021

### Resource Consents Monitored for May & June 2021



	May	June
■ RC Monitored	174	153

### Compliance Status of Monitored Consents for June 2021

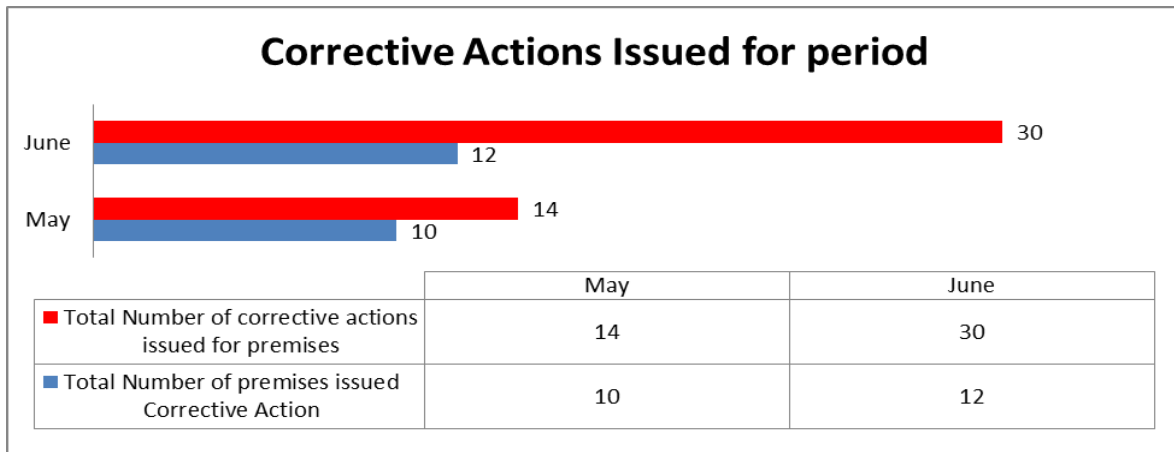
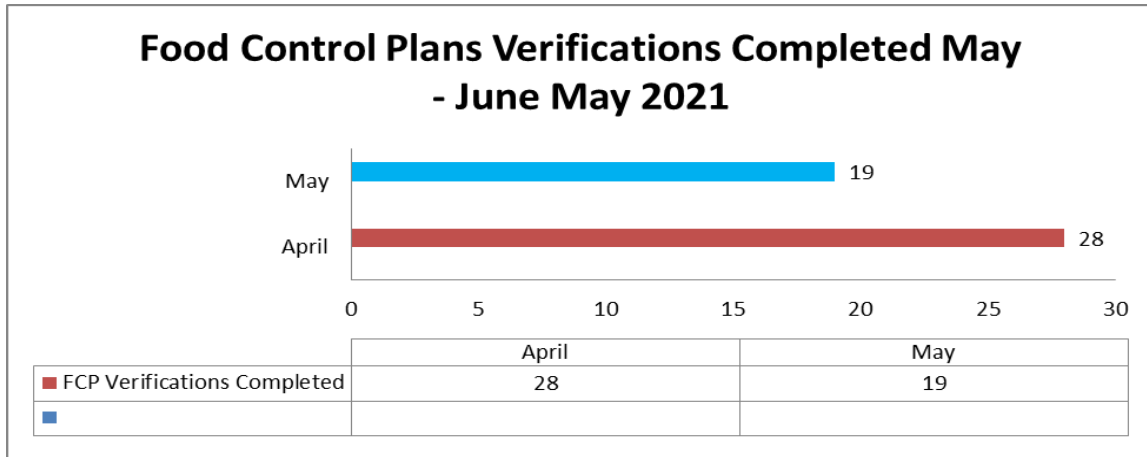


	Technical Low Non compliance	Moderate Non Compliance	Significance Non compliance	Undetermined	Compliant
■ June	5	43	1	11	93



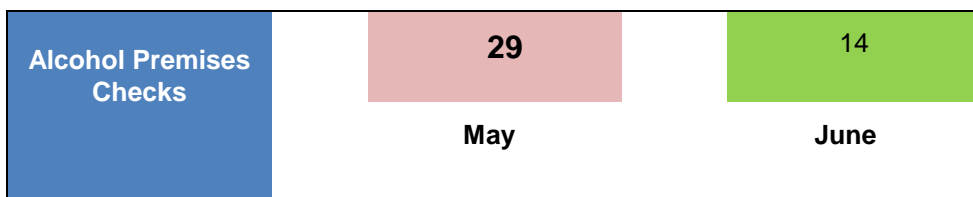
## Environmental Health Section

Number of Verifications (inspections) completed for period May & June 2021

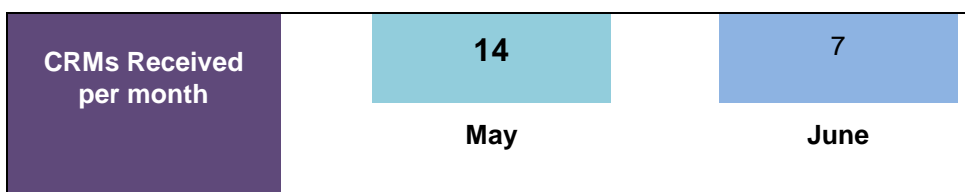


The number of corrective actions has again increased. It's highlighted that some premises required more assistance than others.

Number **Alcohol Inspections** for May & June 2021



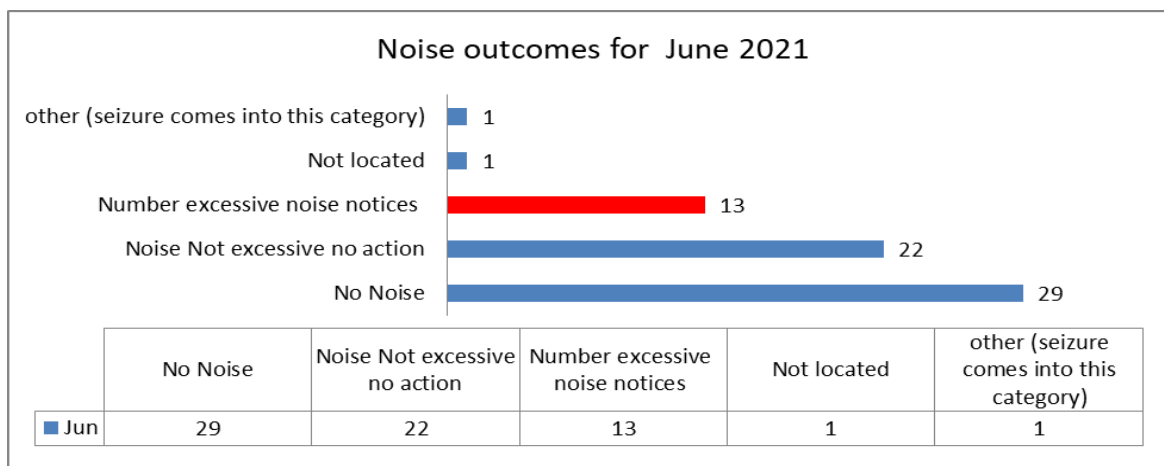
Number of **complaints received** for period of **May & June 2021**



## Noise Control

Figures for June 2021

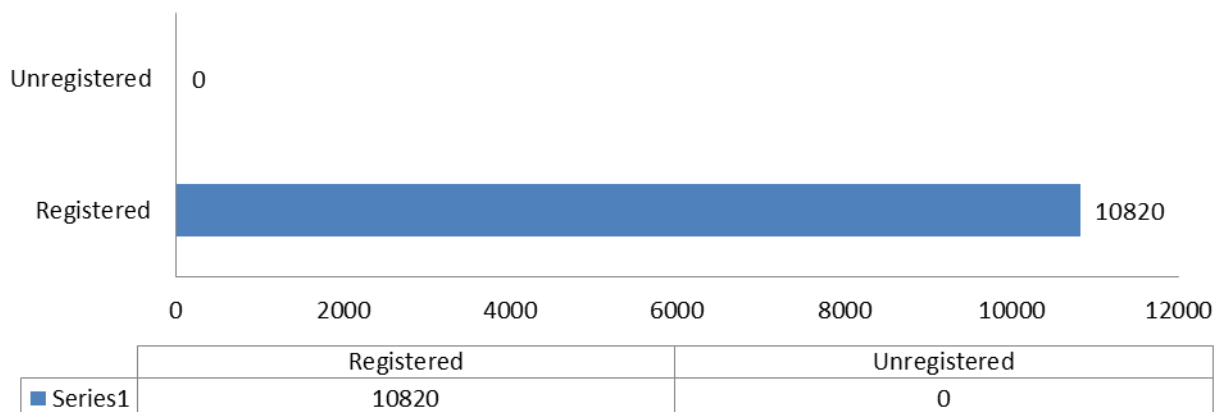
Noise Complaints Received	<b>29</b>
Noise Direction Notices Issued	<b>13</b>
Seizure of Equipment	<b>1</b>



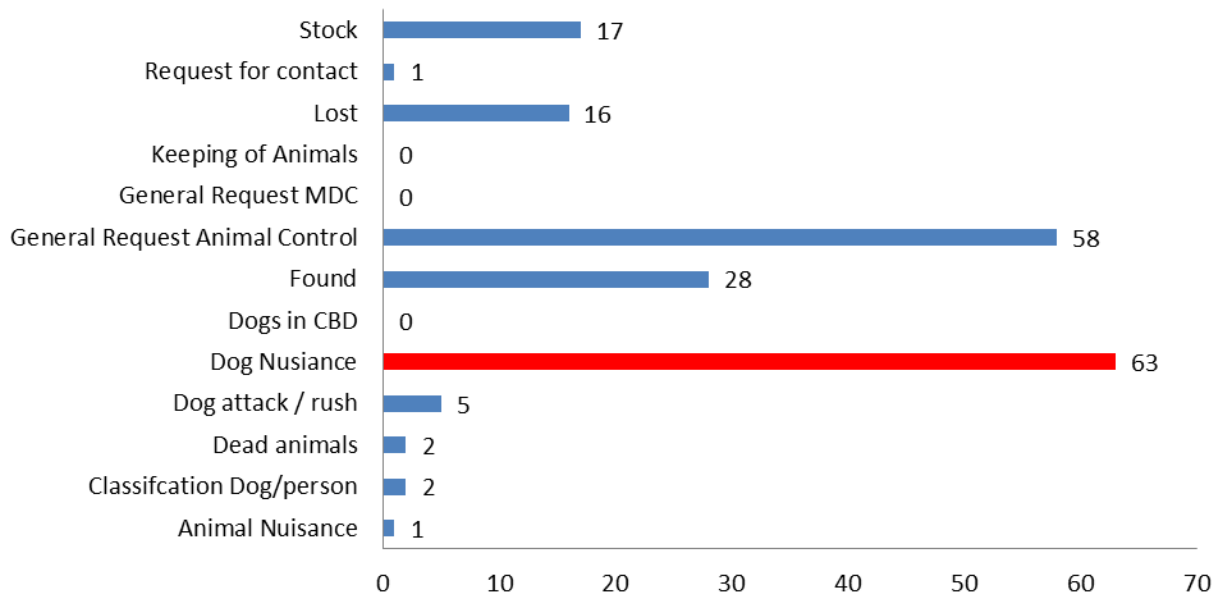
## Animal Control

Current number of known Dogs registered is: **10820**

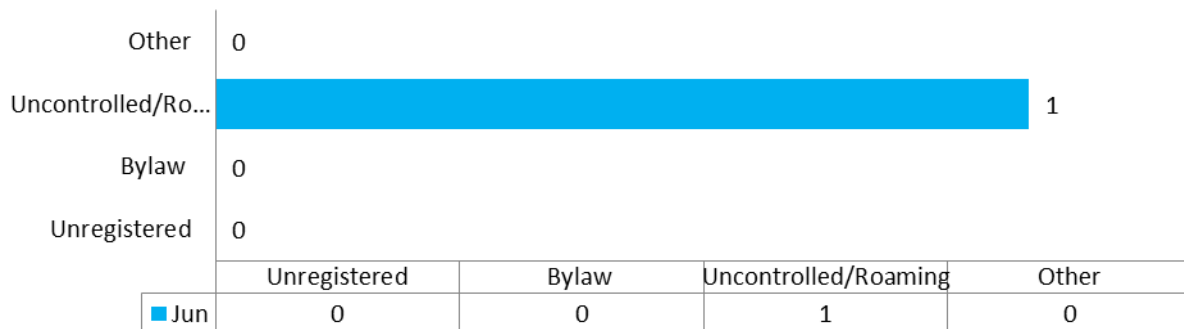
### Dog Registration 2020/21



## Animal Control CRMS Received for June 2021



## Infringements issued for June 2021



# Resource Consents Section

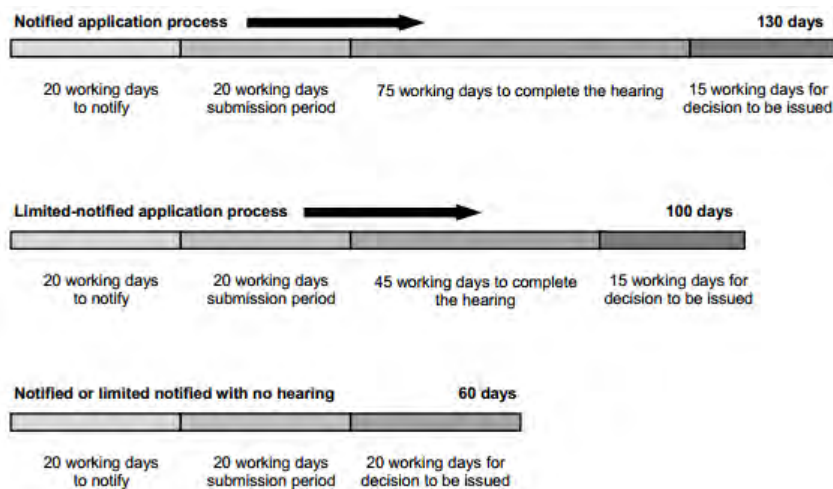
(Report prepared by Anna Eatherley)

(R450-004-12)

## Resource Consent Team Update - Statutory Timeframes

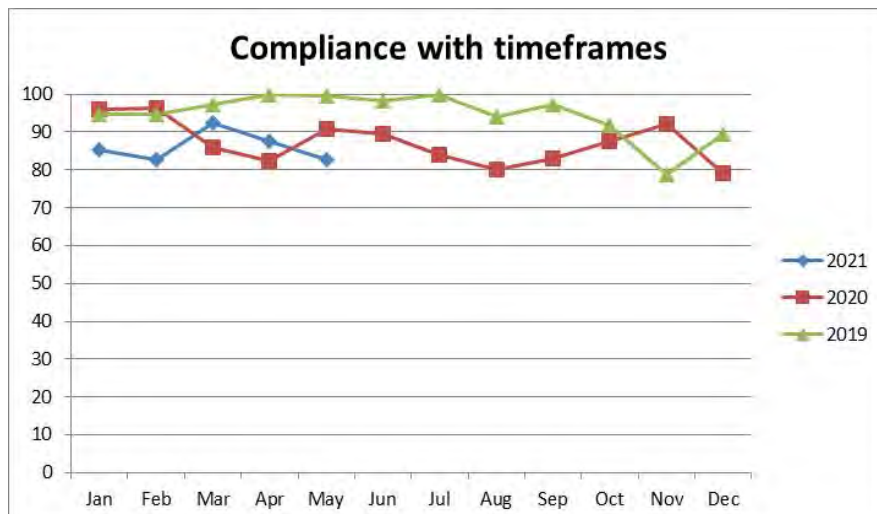
The Resource Management Act 1991 (RMA) requires Council to meet a number of time limits for statutory procedures. In addition these statutory requirements there is a general duty for consenting staff who exercise or carry out functions, power, or duties under the Act to do so *as promptly as is reasonable in the circumstances*. Processing an application within the time frames set by the RMA is very important. The time taken to process an application is a very commonly received complaint about the resource consent process.

The following diagram sets out the timeframes for each stage of the resource consent process and the total time limit. The total time limits apply unless further information is requested, a report is commissioned, an application is deferred, the Council extends the timeframe, or the applicant suspends processing of the application.



It is Council’s legal responsibility to ensure time limits are met. This is highlighted further by the Discount Regulations which require Council to provide a financial discount on administrative charges in cases where an application for a resource consent (or an application to change or cancel conditions) is not processed within the time frame contained in the RMA and the reason for the failure to meet rests with the Council.

The chart below indicates that timeframe compliance has not been fully achieved over the last three years. Since October 2018 Council has only achieved 100% timeframe compliance for two months (April 2019 and July 2019).





There are a number of reasons why timeframe compliance has not been achieved including:

- The number of applications received.
- The complexity of the applications received.
- Staff resources – loss through retirement and resignation of experienced planners with relevant skill sets.
- The quality of the applications received. The conflict of providing a customer focused service vs. the acceptance of sub-standard applications
- Operating under three Plans.
- The global pandemic and associated lockdowns/restrictions on normal operations.

The 2021 year has presented a scenario, with a reduction in the number of applications received and appropriate staffing levels, which enables Council to now reprioritise and focus on timeframe compliance. Measures that have been/will be put into place include:

- The establishment of three Lead Senior Environmental Planners to mentor and train developing staff and to allocate and monitor workload.
- The creation of a pathway with full Council support for staff to develop and achieve recognition as a Senior Environmental Planner.
- Improvements and fixes to ReCApp to extend its capabilities beyond the current minimum viable product; particularly days in processing alerts for planners and the manager.
- Measures including electronic devices which enable business as usual regardless of Covid-19 Level.
- A customer focussed service which provides applicants with certainty in regard to the requirement for complete applications and consequent timeframe compliance.

## Resource Consent Approvals Under Delegated Authority

The following applications have been approved under delegated authority pursuant to Council's Instrument of Delegation pursuant to the Local Government Act 1974, and the relevant clause thereof as identified below.

	Delegation	Consent Holder	Consent No.	Consent(s) Issued	Proposal	Site Location	Date Issued
1.	327A	R A & S A Hartland	U210390	Cancellation of Building Line Restriction	Cancellation of the building line restriction 30880.	31 Havelock Street, Renwick	31/05/2021
2.	327A	P H Kinzett	U210340	Cancellation of Building Line Restriction	Removal of Building Line Restriction 617.	2 Poynter Street, Blenheim	3/06/2021
3.	348	L2 Limited	U210400	Right(s) of Way	Create rights of way	446 State Highway 63, Renwick	25/06/2021

The following applications have been approved under delegated authority pursuant to Council's Instrument of Delegation pursuant to the Resource Management Act 1991, and the relevant clause thereof as identified below.

	Delegation	Consent Holder	Consent No.	Consent(s) Issued	Proposal	Site Location	Date Issued
1.	104B	T D Lawton	U210228	Land Use (Activity) Land Use (Land Disturbance)	Construct a retaining wall and place cleanfill within 8.0m of a waterway	2694 State Highway 6, Okaramio, Havelock	24/05/2021
2.	104B	D J Schulz and J K Elliott trustees of The Reflection Trust	U210247	Subdivision (Allotment Creation) Land Use (Activity)	Create two residential lots. Dwelling and porch (created on the subdivision) to breach the recession plane on western boundary, and construct vehicle crossing located 14m from an intersection	31 Devon St	24/05/2021
3.	104B	B M and V R Evans	U210275	Discharge Permit (to Land)	Discharge treated domestic wastewater to land	46 Edgewater Place, Rarangi	24/05/2021

	Delegation	Consent Holder	Consent No.	Consent(s) Issued	Proposal	Site Location	Date Issued
4.	104B	C N and V C W Thornley trustees of C and V Thornley Family Trust	U210342	Land Use (Activity)	Discharge treated domestic wastewater to land	Bill Bryants Road, Wairangi Bay, French Pass	24/05/2021
5.	104B	Marlborough Sounds Investments Limited	U210138	Coastal Permit (Structure) Coastal Permit (Occupancy)	Removal of existing fixed and floating jetty and construction of a new timber fixed jetty. Removal of reclaimed land structures and reinstatement to foreshore; construction of shoreline protection works.	Furneaux Lodge, Endeavour Inlet, Queen Charlotte Sound	25/05/2021
6.	104B	Saint Clair Estate Wines Limited	U210175	Water Permit (Take Water) Water Permit (Use Water) (x2)	Take Wairau Aquifer FMU water up to a maximum rate of 29,355 cubic metres per year from well P28w/3405 for irrigation of vineyard and pasture	243 Swamp Road, Riverlands	25/05/2021
7.	104B	G E F Barnett & A M Wiley	U210307	Discharge Permit (to Land) Land Use (Land Disturbance)	Excavate and fill to construct a dwelling on a slope greater than 7.5 degrees within a Soil Sensitive Area; Discharge secondary treated domestic wastewater within an identified Soil Sensitive Area	115 Windhawk Rise, RD2	25/05/2021
8.	104B	A A Lemmens	U210310	Subdivision (Allotment Creation) Land Use (Activity)	Create two allotments, and install a vehicle crossing.	109 Milton Terrace, Picton	25/05/2021
9.	104B	L & M F Munro	U210327	Land Use (Activity)	Construct a garage 2.2m from front boundary, and encroaching into recession plane on western boundary	90 Lakings Road, Yelverton	25/05/2021
10.	104C	The Bounds Limited	U210350	Land Use (Activity)	Install and operate eleven (11) FrostBoss frost fans	4816 State Highway 63, Wairau Valley	25/05/2021
11.	104A	Govanlea Holdings Limited	U210353	Land Use (Activity)	Install and operate a FrostBoss frost fan	213 Ben Morven Road, Fairhall	25/05/2021

	Delegation	Consent Holder	Consent No.	Consent(s) Issued	Proposal	Site Location	Date Issued
12.	104B	Sanford Limited	U201070	Coastal Permit (Marine Farm)	Relocate and operate, an existing 2.68 hectare marine farm site 8111	Forsyth Bay Pelorus Sound	26/05/2021
13.	104B	J & D P Oliff	U210121	Discharge Permit (to Land)	Discharge treated domestic wastewater to land	129B Queen Charlotte Drive, Havelock	26/05/2021
14.	104A	Misty Cove Wines	U210354	Land Use (Activity)	Install and operate five (5) FrostBoss frost fans	SH 6, Okaramio	26/05/2021
15.	104A	J T Gilbert	U210311	Subdivision (Unit Title)	Subdivide to a unit title with one principle unit with an associated accessory unit, two principle units and two common areas	18 Maxwell Road, Blenheim	27/05/2021
16.	104B	Parsons Road Vineyard Limited	U210316	Land Use (Activity)	Install and operate two (2) FrostBoss frost fans	3017 State Highway 63, Wairau Valley	27/05/2021
17.	104A	Cloudy Bay Vineyards Ltd	U210355	Land Use (Activity)	Install and operate six (6) FrostBoss frost fans	1329 State Highway 6, Renwick	27/05/2021
18.	104A	Cloudy Bay Vineyards Ltd	U210356	Land Use (Activity)	Install and operate five (5) FrostBoss frost fans	253 Condors Bend Road	27/05/2021
19.	104B	G Janis	U210359	Coastal Permit (Mooring)	Extend expiry date of mooring 927 to 2035	Double Cove, Grove Arm	27/05/2021
20.	104B	L A Williams	U210318	Discharge Permit (to Land)	Discharge secondary treated domestic wastewater to land	329 Anakiwa Road, Anakiwa	28/05/2021
21.	136	Babich Wines Limited	U200279	Water Permit (Take Water) (x2)	Transfer abstraction site of water permit to further downstream	19 Fareham Lane, Conders Bend	28/05/2021
22.	104B	D & H J Kidd	U210334	Discharge Permit (to Land)	Discharge secondary treated domestic wastewater to land	23A Morse Street, Wairau Valley	28/05/2021
23.	104A	Meadowbank Vineyard Limited	U210348	Land Use (Activity)	Install and operate four (4) FrostBoss frost fans	Taylor Pass Rd, Taylor Pass	28/05/2021
24.	127	Nikau Drive Limited	U200158	Change or Cancellation of Resource Consent Conditions	Existing dwelling to be removed and Lot split into two vacant residential lots and increase the minimum floor level of Lots (x4) by up to 50mm	193 Alabama Road, Blenheim	31/05/2021



	Delegation	Consent Holder	Consent No.	Consent(s) Issued	Proposal	Site Location	Date Issued
25.	104B	G D & J G Stubbs, and Lunden's Trustee Company Limited	U200971	Subdivision (Allotment Creation) Water Permit (Take Water) Water Permit (Use Water)	Create four allotments; take Southern Springs FMU water from well P28w/2958 up to a maximum rate of 3,650 cubic metres per year and temporarily use water from well P28/2958 for a shared domestic supply for proposed Lots 1, 2, 3 and 4	31 David Street, Blenheim	31/05/2021
26.	104C	Nikau Drive Limited	U210256	Subdivision (Allotment Creation)	Create four residential lots	193 Alabama Road, Redwoodtown, Blenheim	31/05/2021
27.	104B	R A and S A Hartland	U210322	Subdivision (Allotment Creation)	Subdivide into two residential allotments	31 Havelock Street, Renwick	31/05/2021
28.	87BA	R J A & J E Black and J V Dallison	U210379	Deemed Permitted Boundary Activity	Construct a sleepout 1.15m from the southern boundary	Queen Charlotte Drive, Grove Arm	31/05/2021
29.	104B	Whakatapuranga Properties Limited	U201038	Subdivision (Allotment Creation) Land Use (Building)	Create two allotments; Allow the existing dwelling on Lot 1 to encroach into the recession plane of Lot 2	65 Litchfield Street, Blenheim	01/06/2021
30.	104B	A D Burrows & J M Bennett-Burrows	U210073	Discharge Permit (to Land) Land Use (Activity)	Discharge treated domestic wastewater to land from a new wastewater system; Construct a new dwelling that will breach the rear boundary yard setback	71 Rowley Crescent, Grovetown	01/06/2021
31.	104B	Redwood Pass Road Irrigation Limited	U210380	Water Permit (Take Water) (x2) Water Permit (Use Water) (x2)	Take Awatere River A Class FMU water up to a maximum rate of 342 cubic metres per day; Use water for the irrigation of up to 17.1 hectares of vineyard; Take Awatere River A Class FMU water up to a maximum rate of 342 cubic metres per day and 1710 cubic metres per year. Use water for the ancillary purposes outside of irrigation season	1736 Redwood Pass Road, Lower Dashwood	1/06/2021

	Delegation	Consent Holder	Consent No.	Consent(s) Issued	Proposal	Site Location	Date Issued
32.	127	N S Snopko & P M McLaughlin	U100701	Change or Cancellation of Resource Consent Conditions	Change Conditions 2, 3, 5 and 6 of resource consent U100701.02 to enable a vessel up to 16.0 metres in length to use existing mooring M73	Four Fathom Bay, Inner Pelorus	02/06/2021
33.	104B	E D Townley Limited	U210226	Water Permit (Take Water) x2 Water Permit (Use Water) x2 Water Permit (Dam Water)	Take A Class Wairau River FMU water up to a maximum rate of 269.8 cubic metres per day from Hillersden Stream; Use water for the irrigation of up to 33 hectares of vineyard, pasture and crops; Take A Class Wairau River FMU water up to a maximum rate of 269.8 cubic metres per day and 3,300 cubic meters per year from Hillersden Stream outside of irrigation season; Use water for ancillary uses outside irrigation season; Dam up to 20,000 cubic metres of water in an existing dam	2765 State Highway 63, Wairau Valley	02/06/2021

	Delegation	Consent Holder	Consent No.	Consent(s) Issued	Proposal	Site Location	Date Issued
34.	104B	P J & S M Woolley as trustees of Rarangi Holdings Trust	U210227	Water Permit (Take Water) x2 Water Permit (Use Water) x2	Take A Class Wairau River FMU water from two existing intakes (Grid Ref 1632096E 5394006N and 1632918E 5394356N) up to a maximum rate of 23,796 cubic metres per day; Use water for the irrigation of up to 47 hectares of vineyard and up to 423 hectares of broad acre pasture and Crops; Take A Class Wairau River FMU water from two existing intakes (Grid Ref 1632096E 5394006N and 1632918E 5394356N) up to a maximum rate of 23,796 cubic metres per day, 47,000 cubic metres per year outside of the irrigation season; Use water for miscellaneous uses outside of the irrigation season	3913 State Highway 63, Wairau Valley	02/06/2021
35.	104A	A J and M J Neylon as trustees of the Neylon Trust	U210371	Land Use (Activity) (x2)	Install and operate two (2) Orchard Rite 2430 frost fans	216 Dillons Point Road	2/06/2021
36.	104B	Sanford Limited	U200650	Coastal Permit (Marine Farm)	Replacing U991003A, MPE800A, U001345A and U050647) for the continuation, using conventional longline methods, of an existing 10.3 hectare marine farm site 8562	Fish Bay, Kenepuru Sound	03/06/2021
37.	104B	Marlborough Equestrian Park NZ Inc	U210001	Land Use (Activity)	Construct an approximately 114 square metre club room for the pony club on leased land	80 Bothams Bend Road, Lower Wairau, Marshlands	03/06/2021
38.	104B	H C Edie	U210218	Land Use (Land Disturbance) Discharge Permit (to Land)	Undertake excavations in excess of 50 cubic metres on a slope greater than 25 degrees; Discharge secondary treated domestic wastewater to land via a new onsite wastewater system	129A Queen Charlotte Drive, Havelock	03/06/2021

	Delegation	Consent Holder	Consent No.	Consent(s) Issued	Proposal	Site Location	Date Issued
39.	104B	T M & N A Norton	U210294	Land Use (Activity) Land Use (Land Disturbance) Discharge Permit (to Land)	Construct a dwelling in breach of northern and western yard setbacks. Excavate within 8 metres of the landward toe of a stopbank and discharge treated domestic wastewater in a soil sensitive area	23 Hardings Road, Riverlands	3/06/2021
40.	104A	Tasman Pine Forests Limited	U210336	Land Use (River Surface or Bed Activity)	Demolish the existing single-span bridge and construct a new single-span bridge	Ada Road, Linkwater	3/06/2021
41.	104A	Rose Family Vineyards Limited	U210382	Land Use (Activity)	Install and operate two (2) FrostBoss C59 frost fans	60 St Leonards Rd, Springlands	3/06/2021
42.	104B	S J & C G Rentoul	U210330	Discharge Permit (to Land)	Discharge treated domestic wastewater to land from an increased wastewater field	54 Hardings Road, Riverlands	4/06/2021
43.	127	Waikawa Boating Club Incorporated, Pelorus Boating Club Incorporated, Mana Cruising Club Incorporated	U950506	Change or Cancellation of Resource Consent Conditions	Change Condition 8 to enable mooring M22 to be repositioned	Governors Bay, Grove Arm	08/06/2021
44.	127	Waikawa Boating Club Incorporated, Pelorus Boating Club Incorporated, Mana Cruising Club Incorporated	U981064	Change or Cancellation of Resource Consent Conditions	Change consent conditions to enable various changes to boating club moorings M9, M10, M12, M13, M15, M18 and M19	Various locations throughout the Marlborough Sounds	08/06/2021
45.	127	Waikawa Boating Club Incorporated, Pelorus Boating Club Incorporated, Mana Cruising Club Incorporated	U080441	Change or Cancellation of Resource Consent Conditions	Change Condition 2 to enable mooring M3152 to be repositioned	Gold Reef Bay, Long Bay, North Coast Kenepuru, Inner Pelorus	08/06/2021

	Delegation	Consent Holder	Consent No.	Consent(s) Issued	Proposal	Site Location	Date Issued
46.	127	Waikawa Boating Club Incorporated, Pelorus Boating Club Incorporated, Mana Cruising Club Incorporated	U130084	Change or Cancellation of Resource Consent Conditions	Change Condition 3 to enable mooring M794 to be repositioned	Maori Bay, Port Ligar	08/06/2021
47.	127	Waikawa Boating Club Incorporated, Pelorus Boating Club Incorporated, Mana Cruising Club Incorporated	U130325	Change or Cancellation of Resource Consent Conditions	Change Condition to enable an increase to the swing circle of mooring M799	Stafford Bay. Pelorus Sound/Te Hoiere	08/06/2021
48.	127	Waikawa Boating Club Incorporated, Pelorus Boating Club Incorporated, Mana Cruising Club Incorporated	U130326	Change or Cancellation of Resource Consent Conditions	Change Condition 7 to allow for an upgrade of mooring M796	Waiona Bay, Pelorus Sound	08/06/2021
49.	127	Waikawa Boating Club Incorporated, Pelorus Boating Club Incorporated, Mana Cruising Club Incorporated	U190433	Change or Cancellation of Resource Consent Conditions	Change Condition 4 to enable an increase to the swing circle of mooring M347	Stafford Bay, Pelorus Sound/Te Hoiere	08/06/2021
50.	136	Marlborough District Council	U190995	Transfer of Abstraction and/or Use Site	Transfer the abstraction site of water permit U190995 from wells P27w/0470, P27w/0448 and P27w/0548 to wells P27w/0470, P27w/0448, P27w/0548, 11056 and 11070	25 Speeds Road, Koromiko, Picton	09/06/2021
51.	127	S Pethig & J Jones	U200857	Change or Cancellation of Resource Consent Conditions	Amend condition 3 to only require written confirmation of a new underground telecom connection to Lot 2.	9 Buick Street, Blenheim	09/06/2021
52.	104B	V & A M Belgrave	U201086	Discharge Permit (to Land)	Discharge treated domestic wastewater to land from an existing wastewater system	Kaitepha Bay, Arapawa Island	09/06/2021
53.	104B	P G Adams	U210268	Coastal Permit (Mooring)	Establish a new swing mooring M3801	North West Bay, Pelorus Sound	09/06/2021



	Delegation	Consent Holder	Consent No.	Consent(s) Issued	Proposal	Site Location	Date Issued
54.	104B	D C & C A Skipper	U210331	Land Use (Land Disturbance) Land Use (Building)	Undertake approximately 85m <sup>3</sup> of earthworks; construct a new side entrance garage without a window that will be 1m from the road boundary	1 Rose Street, Havelock	09/06/2021
55.	104B	D C & V J Allen	U210365	Discharge Permit (to Land)	Discharge advanced secondary treated domestic wastewater to land via an existing onsite wastewater management system	68 Pipitea Drive, Rarangi, Marlborough	09/06/2021
56.	87BA	J Ry F Acott	U210386	Deemed Permitted Boundary Activity	Build a new workshop addition to the dwelling house with attached garage that will encroach the recession plane and be within 1m of the western boundary	22 Cashmere Grove, Witherlea, Blenheim	09/06/2021
57.	87BA	V F Langrope nee Robb	U210388	Deemed Permitted Boundary Activity	Build a new 9m x 8m garage that will encroach the recession plane and be 1m from the western boundary	9A McCallum Street, Springlands, Blenheim	09/06/2021
58.	127	P J & E A Vile and C J & K A Cowie	U090571	Change or Cancellation of Resource Consent Conditions	Proposed changes to conditions 1, 3, 7, 8, 11, 16, 17, 29 and 30 to reflect a proposed reduction of lots to be created from 7 to 5	Marlborough Ridge Drive, Fairhall	10/06/2021
59.	127	Waikawa Boating Club Incorporated, Pelorus Boating Club Incorporated, Mana Cruising Club Incorporated	U 950506	Change or Cancellation of Resource Consent Conditions	Change Condition 8 to enable mooring M233 to be repositioned	Kaipikirikiri Bay, Queen Charlotte Sound	10/06/2021
60.	104B	J Fanselow	U200794	Discharge Permit (to Land)	Discharge treated domestic wastewater to land from an existing wastewater system	3218 Archers Road, Tennyson Inlet	10/06/2021
61.	104B	Marlborough Kaikoura Trail Trust	U210187	Land Use (River Surface or Bed Activity) Land Use (Land Disturbance)	Construct and maintain a cycle/walking bridge over the Riverlands Co-op Drain; undertake excavations in the Floodway Zone to construct and maintain a cycle/walking bridge over the Riverlands Co-op Drain	Co-op Drain, approximately 170 metres north of Redwood Pass Road & State Highway 1 intersection, Riverlands, Blenheim	10/06/2021

	<b>Delegation</b>	<b>Consent Holder</b>	<b>Consent No.</b>	<b>Consent(s) Issued</b>	<b>Proposal</b>	<b>Site Location</b>	<b>Date Issued</b>
62.	104A	M Sanft	U210341	Land Use (Land Disturbance) `	Undertake soil disturbance on a HAIL site that does not comply with Regulation 8(3) clause c) and clause d) of the Resource Management (National Environmental Standard for Assessing and Managing Contaminants in Soil to Protect Human Health) Regulations 2011	8 Gibbons Place, Grovetown, Blenheim	10/06/2021

	Delegation	Consent Holder	Consent No.	Consent(s) Issued	Proposal	Site Location	Date Issued
63.	104B	Leefield Station Waihopai Valley	U180919	Water Permit (Take Water) x5 Water Permit (Use Water) x4	Take A Class Waihopai FMU water from two existing infiltration galleries and well P28w/4012 up to a maximum rate of 1,973.6 cubic metres per day; Take B Class Waihopai FMU water from two existing infiltration galleries up to a maximum rate of 17,576.4 cubic metres per day. Take C Class Waihopai FMU water from two existing infiltration galleries up to a maximum rate of 8,503 cubic metres per day; Use water in the Leefield Winery; Use water in the Guernsey Road Winery; Use water for the irrigation of up to 850 hectares of vineyards. Take A Class Waihopai FMU water from two existing infiltration galleries and well P28w/4012 up to a maximum rate of 1,973.6 cubic metres per day outside of the irrigation season; Take B Class Waihopai FMU water from two existing infiltration galleries up to a maximum rate of 17,576.4 cubic metres per day outside of the irrigation season; Use water for ancillary uses in vineyards outside of the irrigation season  (Grid Ref 1659223E 5394722N & 1659566E 5394755N)	Leefield Station, Waihopai Valley	11/06/2021
64.	104B	MDG Limited	U210293	Subdivision (Boundary Adjustment)	Create two lots as part of a boundary adjustment	19 Liverpool Street, Riverlands, Marlborough	11/06/2021

	Delegation	Consent Holder	Consent No.	Consent(s) Issued	Proposal	Site Location	Date Issued
65.	104B	I DeJ Pereira Junior & S B Campos	U210335	Subdivision (Allotment Creation) Land Use (Activity)	Create two residential allotments; Authorise the existing dwelling on Lot 2 to encroach into the recession plane on the new boundary with Lot 1	80 Redwood Street, Redwoodtown, Blenheim	11/06/2021
66.	104B	R M Dawber	U210260	Coastal Permit (Structures) Discharge Permit (to Land)	Permit for two existing mooring poles and discharge treated domestic wastewater to land from a new wastewater system	129D Queen Charlotte Drive, Havelock	14/06/2021
67.	104B	M R & C A Gordon	U210366	Land Use (Activity)	Construct a dwelling and garage that will exceed the maximum height, encroach into the recession plane along the western boundary and not meet the outdoor amenity requirements	6 Whaitere Place, Waikawa, Picton	14/06/2021
68.	87BA	M L & D A Turner	U210401	Deemed Permitted Boundary Activity	Construct a 7m x 5.2m pole shed which will be 1.4m from the southern boundary	19 Ocean View Crescent, Rarangi, Blenheim	14/06/2021
69.	104B	Rimapere Vineyards Limited	U210292	Water Permit (Take Water) x2 Water Permit (Use Water) x2	Take Wairau Aquifer water up to a maximum rate of 12,658 cubic metres per year from well P28w/0360; Use water for the irrigation of 9.28 hectares of vineyard; Take Wairau Aquifer water up to a maximum rate of 365 cubic metres per year from well P28w/4036 and use water for commercial (cellar door, and ancillary uses) purposes	256 Rapaura Road, Rapaura, Blenheim	15/06/2021

	Delegation	Consent Holder	Consent No.	Consent(s) Issued	Proposal	Site Location	Date Issued
70.	104B	J S & J R Fowler trustees of Wyeburn Trust	U210337	Water Permit (Take Water) x2 Water Permit (Use Water) x2	Take A Class Wairau River FMU water from a proposed infiltration gallery (Grid Ref 1624720E 5390530N) up to a maximum rate of 1380 cubic metres per day; Use water for the irrigation of up to 60 hectares of vineyard; Take A Class Wairau River FMU water from a proposed infiltration gallery (Grid Ref 1624720E 5390530N) up to a maximum rate of 1380 cubic metres per day, 6000 cubic metres per year, outside of the irrigation season; Use water for ancillary uses outside of the irrigation season	4816 State Highway 63, Wairau Valley, Marlborough	15/06/2021
71.	104B	VBS (Nelson) Limited	U210363	Land Use (Activity)	Construct a two bedroom caretakers residence on the ground floor inside the warehouse building	44 Arthur Street, Blenheim	15/06/2021
72.	104B	G R Harnett	U210060	Land Use (Land Disturbance)	Undertake land disturbance for the purpose of completing a pedestrian access track	Double Cove, Grove Arm, Queen Charlotte Sound	16/06/2021
73.	104B	P F & D L Lilley for The Lilley Family Trust	U210262	Subdivision (Allotment Creation)	Create two allotments	365 Caseys Road, Blind River, Seddon	16/06/2021
74.	104B	Avora Limited	U190500	Coastal Permit (Structures) x3	Construct a new 36 metre long jetty; Place rock erosion protection along the shoreline and replacing in part for the continuation of an existing rail iron slipway	Iwirua Point, Queen Charlotte Sound/Totaranui	17/06/2021



	Delegation	Consent Holder	Consent No.	Consent(s) Issued	Proposal	Site Location	Date Issued
75.	104B	Rapaura Holdings Limited	U200428	Land Use (Activity) x3 Discharge Permit (to Land) Water Permit (Use Water) Water Permit (Use Water)	Construct and operate an office and café (including tasting bar and functions facility); Construct and operate a brewery and bottling plant with a maximum production output of 2 million litres of beer and cider; Encroach the building height requirements, exceed permitted building site coverage, and erect advertising signage; Discharge treated human wastewater up to a maximum rate of 6,450 litres per day to land; Abstract Wairau Aquifer FMU water up to a maximum rate of 27,800 cubic metres per year from well P28w/322 and use water for commercial uses (winery, brewery, cellar door, tasting bar & function centre, café, and office uses) and landscaping purposes	309 Rapaura Road Rapaura	17/06/2021
76.	104B	J R & L B Orr for Kowhai Trust	U210235	Land Use (Bore)	Retrospective consent to install a bore for irrigation and domestic use within the bed of the Omaka River and within a road reserve at approximately 1663114.7E 5395687N	366 Tyntesfield Road, Waihopai Valley, Marlborough	17/06/2021
77.	104B	J M & B J Streeter	U210326	Land Use (Activity)	Construct a new side entrance garage that will be 1.64m from the front boundary	69 McLauchlan Street, Springlands, Blenheim	17/06/2021
78.	104B	M R Simcox	U210338	Subdivision (Allotment Creation)	Create two allotments	28 Leitrim Street, Redwoodtown, Blenheim	17/06/2021
79.	104B	L J Read	U210369	Land Use (Bore)	Install a replacement domestic bore	44 Rene Street, Springlands, Blenheim	17/06/2021
80.	104B	M O Goldthorpe	U210373	Subdivision (Boundary Adjustment)	Create three lots as part of a boundary adjustment	56 Camerons Road, Okaramio, Havelock	17/06/2021

	Delegation	Consent Holder	Consent No.	Consent(s) Issued	Proposal	Site Location	Date Issued
81.	104B	A J & D M Prow	U210378	Discharge Permit (to Land)	Discharge secondary treated domestic wastewater to land via a new onsite wastewater management system	Ruakaka Ba, Queen Charlotte Sound	17/06/2021
82.	87BA	C W & A M Thomas	U210415	Deemed Permitted Boundary Activity	Build a 12m x 4m pole shed that will be 1m from the southern boundary	25 Hardings Road, Riverlands, Marlborough	17/06/2021
83.	87BA	S G & A L J McDermid for Scott McDermid Family Trust	U210425	Deemed Permitted Boundary Activity	Construct a 13.2m x 8.0m garage that will breach the recession plane on the eastern and southern boundaries	43 Severne Street, Yelverton, Blenheim	17/06/2021
84.	104B	S R J & Y A Hayes	U210241	Subdivision (Allotment Creation) Land Use (Activity)	Create two allotments and amalgamate proposed Lot 2 with Lot 4 DP 5827, to be held together on one record of title; authorise a recession plane encroachment on the southern boundary of proposed Lot 1	36A McKenzie Street, Witherlea, Blenheim	18/06/2021
85.	221	W S & J A Dillon	U210288	Change or Cancellation of Consent Notice Conditions	Vary Condition 2 of Consent Notice 10861139.1	17C Penny Street, Mayfield, Blenheim	18/06/2021
86.	104B	W S & J A Dillon	U210289	Land Use (Activity) Land Use (Land Disturbance)	Construct a retaining fence, paving and planter boxes within 8 metres of Waterlea Racecourse Creek and carry out land disturbance within 8 metres of Waterlea Racecourse Creek	17C Penny Street, Mayfield, Blenheim	18/06/2021
87.	104B	Forrest Cove Limited	U210367	Discharge Permit (to Land) Land Use (River Surface or Bed Activity)	Discharge treated domestic wastewater to land via a new onsite wastewater management system	Yncyca Bay, Pelorus Sound	18/06/2021
88.	104B	Seacliffe Investments Limited	U210375	Water Permit (Dam Water) Discharge Permit (to Land)	Dam water up to 31,000 cubic metres per year from an unnamed stream in an existing dam and discharge water from a dam during maintenance periods	220 Wrekin Road, Fairhall, Marlborough	18/06/2021

	Delegation	Consent Holder	Consent No.	Consent(s) Issued	Proposal	Site Location	Date Issued
89.	104B	P C Cooper	U210283	Coastal Permit (Mooring)	Establish a new swing mooring M3803	Nydia Bay, Pelorus Sound	21/06/2021
90.	127	Tasman Bay Cruising Club Incorporated	U110612	Change or Cancellation of Resource Consent Conditions	Change Conditions 3 and 7 of Coastal Permit (Mooring) consent in order to relocate existing swing mooring M151	Ponganui Bay, Current Basin, D'Urville Island	22/06/2021
91.	127	T Thornley	U160383	Change or Cancellation of Resource Consent Conditions	Change conditions 4 and 5 of Coastal Permit (Mooring) consent to enable a vessel up to 12.0 metres in length to use existing mooring M1378	Double Bay, Kenepuru Sound	22/06/2021
92.	104B	B L & C A Bray	U210304	Land Use (Activity) Discharge Permit (to Land)	Convert an existing tasting facility into a second dwelling and discharge treated domestic wastewater to land	70 Wrekin Road, Fairhall	22/06/2021
93.	104B	N C James	U210345	Land Use (Activity)	Construct a 3-bay (10m x 15m) implement shed for the storage of farm machinery that will be 6m from the front boundary and 3m from the side boundary	201 Thomas Road, Spring Creek, Marlborough	22/06/2021
94.	104B	O L & L M Davies	U210392	Discharge Permit (to Land)	Discharge primary treated domestic wastewater to land	16 Worlds End Road, Tennyson Inlet, Marlborough Sounds	22/06/2021
95.	104B	Talleys Group Limited	U191089	Coastal Permit (Marine Farm)	Replacing MFL247 and U081266 to relocate and operate, using conventional longline methods, an existing 6.37 hectare marine farm site 8191	Hallam Cove, Pelorus Sound/Te Hoiere	23/06/2021
96.	104B	D F Phillips	U200860	Discharge Permit (to Land)	Discharge secondary treated domestic wastewater to land	96 Port Underwood Road, Waikawa	23/06/2021
97.	104B	Rimapere Vineyards Limited	U201115	Land Use (Activity)	Establish and operate a commercial activity (wine tastings and sales) and related office from a former dwelling house	256 Rapaura Road, Rapaura, Blenheim	23/06/2021
98.	104B	C L & J M Matthews	U210215	Discharge Permit (to Land)	Discharge domestic greywater to land via a new onsite wastewater management system	Nydia Bay, Pelorus Sound / Te Hoiere	23/06/2021
99.	104B	B L Wood	U210394	Discharge Permit (to Land)	Discharge primary treated domestic wastewater to land	2 Worlds End Road, Tennyson Inlet, Marlborough Sounds	23/06/2021

	Delegation	Consent Holder	Consent No.	Consent(s) Issued	Proposal	Site Location	Date Issued
100	104B	L F Sparrow	U140004	Coastal Permit (Mooring)	Replacing U040578 for the continuation of an existing swing mooring M2287	Port Ligar, Pelorus Sound	24/06/2021
101	104B	Gramac Investments Limited	U210393	Subdivision (Boundary Adjustment)	Create two allotments as part of a boundary adjustment	20 Cloudy Bay Drive, Riverlands, Marlborough	24/06/2021
102	104B	R A N & N F Manthel and R U McElroy as trustees of the Manthel Family Trust	U190888	Coastal Permit (Mooring)	Validate an existing swing mooring M3746	Double Cove, Inner Queen Charlotte Sound	25/06/2021
103	104B	C E Egan, S P Frater	U210229	Discharge Permit (to Land)	Discharge domestic greywater to land via a new onsite wastewater management system	Nydia Bay, Pelorus Sound / Te Hoiere	25/06/2021
104	104B	Utawai Vineyards Limited	U210442	Land Use (Activity)	Install and operate an Orchard Rite 2600 frost fan with a CAT engine	239 Redwood Pass Road, Redwood Pass, Seddon	25/06/2021
105	87BA	S J Brownie	U210447	Deemed Permitted Boundary Activity	Carry out dwelling alterations (replace first floor) and construct a new garage which will breach the recession plane on the northern boundary	1698 Queen Charlotte Drive, Momorangi Bay	28/06/2021
106	104B	Kintyre Vineyard Limited Partnership	U210405	Land Use (Dam) Water Permit (Dam Water) Land Use (Land Disturbance) Water Permit (Take Water)	Construct a dam with a maximum wall height of 4.8 metres; dam up to 100,000 cubic metres of water in a reservoir; place approximately 7,850 cubic metres of fill in a Level 2 Flood Hazard Area and take C Class Wairau River FMU water from existing intake gallery O28w/0246 up to a maximum rate of 2,530 cubic metres a day	State Highway 63, Wairau Valley	29/06/2021
107	87BA	D M Dinmore	U210463	Deemed Permitted Boundary Activity	Construct a dwelling that will encroach the southern boundary recession plane	71i Maxwell Road, Blenheim	29/06/2021

	Delegation	Consent Holder	Consent No.	Consent(s) Issued	Proposal	Site Location	Date Issued
108	104B	Hamilton House Ltd	U210395	Discharge Permit (to Land)	Discharge secondary treated domestic wastewater to land via a new onsite wastewater management system	217 Te Towaka-Port Ligar Road, Admiralty Bay, Marlborough Sounds	30/06/2021
109	104B	P C & S A Prosser	U210410	Subdivision (Allotment Creation)	Create two allotments	64 Havelock Street, Renwick, Marlborough	30/06/2021
110	104A	Old Bankhouse Partnership, G M & T J Bryce	U210451	Land Use (Activity) x9	Installation and operation of nine (9) FrostBoss C49 frost fans, all with Perkins Engines	1003 State Highway 63, Wairau Valley, Marlborough	30/06/2021
111	104B	Marlborough Kaikoura Trail Trust	U210266	Land Use (River Surface or Bed Activity) x2 Water Permit (Divert Water) Land Use (Land Disturbance)	Attach a cycle/walking bridge to the State Highway 1 Wairau River Bridge; Disturb the Wairau Riverbed during the attachment of a cycle/walking bridge to the State Highway 1 Wairau River Bridge; Undertake land disturbance adjacent to the Wairau Riverbed to construct cycle/walking track approaches to the State Highway 1 Wairau River Bridge; construct a cycle/walking track in Designation K1 adjacent to the State Highway 1 Wairau River Bridge	State Highway 1 Wairau Bridge, Tuamarina	01/07/2021
112	104B	MacLab (NZ) Limited as trustee of MacLab (NZ) Unit Trust	U210357	Coastal Permit (Marine Farm)	Replacing MFL467 and U100565) to relocate and operate, using conventional longline methods, an existing 5.79 hectare marine farm site 8290	Squally Cove, Croisilles Harbour	01/07/2021
113	104B	B J Grady	U210376	Land Use (Land Disturbance)	Carry out land disturbance for the purpose of creating a driveway within 8 metres of Yelverton Stream	37 David Street, Blenheim	01/07/2021
114	139	The Rural Connectivity Group	U210454	Certificate of Compliance	Establish, operate and maintain a telecommunication facility	112 Te Towaka Road, Te Towaka, Marlborough Sounds	01/07/2021
115	104A	Northbank Vineyards Limited	U210455	Land Use (Activity)	Install and operate an Orchard Rite 2430 frost fan with a CAT engine	1224 Kaituna-Tuamarina Road, Kaituna, Renwick	01/07/2021



	Delegation	Consent Holder	Consent No.	Consent(s) Issued	Proposal	Site Location	Date Issued
116	104B	E S Murchison, J J McRae	U210421	Discharge Permit (to Land)	Discharge treated domestic wastewater to land via an onsite wastewater management system	7 Gee Street, Renwick, Marlborough	02/07/2021
117	104B	M R & J E Hall	U210406	Land Use (River Surface or Bed Activity) x2 Land Use (Land Disturbance) Water Permit (Divert Water)	Occupy the Awatere Riverbed with an infiltration Gallery; Undertake excavation works within the bed of the Awatere River associated with installation and maintenance of an infiltration gallery and associated diversion channel; Undertake land disturbance within 8 metres of the Awatere Riverbed; Divert Awatere River water away from or over an infiltration gallery	Awatere River, Awatere Valley	05/07/2021
118	104D	R D Lucas	U140513	Water Permit (Take Water) Water Permit (Use Water)	Take Waikakaho FMU water from intake sites on Hop Pole Creek (Grid Ref 1672580E 5419518N) and Golden Belt Stream (Grid Ref 1673080E 5419590) up to a maximum rate of 1,123 cubic metres per day: use water for the irrigation of 40 hectares of pasture and	958 Waikakaho Valley, Waikakaho	06/07/2021
119	104B	Indevin Estates Limited	U200871	Land Use (Dam) Water Permit (Dam Water)	Construct a 4 metre high storage reservoir; dam up to 55,000 cubic metres of water within a storage reservoir; Dam up to 55,000 cubic metres of water within a storage reservoir	2004 State Highway 63, Wairau Valley	06/07/2021
120	104B	J P Goodenbour	U210397	Land Use (Activity) Land Use (Land Disturbance)	Construct a 6m x 6.3m garage within 8 metres of a watercourse; carry out excavation for the purpose of building foundations within 8 metres of a watercourse	4 Anglesea Street, Renwick, Marlborough	06/07/2021
121	104B	R M Hudson	U210439	Land Use (Activity)	Exceed the permitted building site coverage	20 Field Terrace, Okiwi Bay, Marlborough	06/07/2021
122	104B	Pitapisces Enterprises Ltd	U210443	Land Use (Activity)	Construct a 27m x 9m pole shed	Nile Head Station, Port Hardy, D'Urville Island	06/07/2021

	Delegation	Consent Holder	Consent No.	Consent(s) Issued	Proposal	Site Location	Date Issued
123	104B	D C Hemphill	U210489	Coastal Permit (Structures)	Replacing U110546.1 for the continuation of an existing barge loading ramp	Homewood, Pelorus Sound	06/07/2021
124	104B	A B & A S M Coburn	U210424	Land Use (Activity) x2	Use an existing dwelling house and construct a new building for the purpose of providing visitor accommodation; Construct a new accommodation unit which will encroach the recession plane along the west boundary	142 Middle Renwick Road, Springlands, Blenheim	07/07/2021
125	104B	N A & J M O'Connell	U210434	Land Use (River Surface or Bed Activity) Land Use (Land Disturbance) Water Permit (Divert Water)	Undertake works in a streambed to realign a tributary of Mill Stream; Undertake excavations on areas with loess soils and slopes greater than 7.5 degrees and to undertake infilling greater than 1000 cubic metres; Divert water as the result of realigning a tributary of Mill Stream	222 Wrekin Road, Fairhall, Marlborough	07/07/2021
126	104B	D R Grigg as trustee of The Duncan R Grigg Family Trust	U200757	Land Use (Dam) Water Permit (Dam Water)	Construct a 3.7 metre high storage reservoir located within the required side yard boundary setback: Dam up to 35,000 cubic metres of water within a storage reservoir	324 Taylor Pass Road, Taylor Pass, Blenheim	08/07/2021
127	104B	H I Mackenzie	U210398	Water Permit (Take Water) Water Permit (Use Water)	Take A Class Wairau River FMU water up to a maximum rate of 50 cubic metres per day from well O28w/4476; Use water for the irrigation of up to 8 hectares of pasture and crops	State Highway 63, RD 1, Blenheim 7271	08/07/2021
128	104B	P R Clerke, K H Bowes	U210423	Discharge Permit (to Land)	Discharge secondary treated domestic wastewater to land via an existing onsite wastewater management system	1018 Queen Charlotte Drive, Linkwater, Marlborough	08/07/2021

	Delegation	Consent Holder	Consent No.	Consent(s) Issued	Proposal	Site Location	Date Issued
129	104B	Central Holdings Limited	U210436	Land Use (Activity)	Authorise the existing dwelling of Lot 2 (created on the subdivision U191039) to encroach into the recession plane on the new boundary with Lot 1(created on the subdivision U191039) and to authorise the non-compliant amenity areas for the existing dwellings	80 George Street, Blenheim	08/07/2021
130	104B	M P & C M	U200910	Land Use (Dam) Water Permit (Dam Water)	Construct an off-stream dam within 5 metres of the southern boundary: dam up to 1,660 cubic metres of water within 500 metres of a public road	248 Paynters Road, Fairhall	09/07/2021
131	104B	Marlborough Kaikoura Trail Trust	U201101	Land Use (Activity) Land Use (River Surface or Bed Activity)	Construct and operate a cycle/walking trail in the Rail Corridor (Designation K1); Construct a cycle/walking trail bridge (Aschwood Crossing) over an unnamed stream at Grid Ref 1681274E 5426105N; Construct a cycle/walking trail bridge (Sarjeant Crossing) over an unnamed stream at Grid Ref 1681393E 5425085N	Section of land between the Elevation and Lindens Road	09/07/2021
132	104B	Marlborough District Council (MDC)	U210440	Land Use (River Surface or Bed Activity)	Undertake works in Quarry Drain to extend two existing culverts adjacent to the Pembers Road – Pukaka Road intersection	18 Pukaka Road, Tuamarina, Blenheim	09/07/2021
133	104A	D R Grigg as trustee of The Duncan R Grigg Family Trust	U210489	Land Use (Activity) x6	Install and operate 6 Frost Boss C49 frost fans with Perkins engines.	324 Taylor Pass Road, Taylor Pass, Blenheim	09/07/2021
134	87BA	P A & R L F de Reus	U210493	Deemed Permitted Boundary Activity	Carry out building alterations that will breach the recession plane on the southern boundary	17 Tumbledown Bay Road, Port Underwood, Picton	09/07/2021

	Delegation	Consent Holder	Consent No.	Consent(s) Issued	Proposal	Site Location	Date Issued
135	104B	Whitehaven Wine Company Limited	U210399	Discharge Permit (to Land)	Discharge human wastewater to land up to 3,000 litres per day from an extended wastewater system	39 Pauls Road, Rapaura, Blenheim, Marlborough	12/07/2021
136	104B	L J Marden	U210420	Land Use (Activity)	Construct a three-bay shed on Lot 3 DP 7795 within 100m of existing plantation forestry	233 Wakamarina Road, Canvastown, Havelock	12/07/2021
137	104B	Sanford Limited	U210079	Coastal Permit (Marine Farm)	Replacing U990674 and MPE715 to relocate and operate, using conventional longline methods, an existing 2.46 hectare marine farm site 8598	Melville Cove, Port Gore	13/07/2021
138	104C	Sanford Limited	U210080	Coastal Permit (Marine Farm)	Replacing U990686 and MPE716 for the continuation, using conventional longline methods, of an existing 1.75 hectare marine farm site 8599	Melville Cove, Port Gore	13/07/2021
139	127	K C Johnson	U201129	Change or Cancellation of Resource Consent Conditions	Change Condition 1 of existing consent U201129, to allow for an increase to the pontoon from 9.0 metres to 12.3 metres	Four Fathom Bay, Pelorus Sound/Te Hoiere	13/07/2021
140	104B	L D Jones	U210464	Coastal Permit (Mooring)	Establish a new swing mooring (M3807)	Duncan Bay, Marlborough Sounds	13/07/2021
141	136	Stocker Holdings Limited	U201013	Transfer of Abstraction and/or Use Site	Transfer the abstraction site from well P28w/6491 (Grid Ref: 1663116E 5395587N) to well W20002 (Grid Ref: 1663114E 5395687N)	376 Tyntesfield Road, Waihopai	14/07/2021

	Delegation	Consent Holder	Consent No.	Consent(s) Issued	Proposal	Site Location	Date Issued
142	104B	J S & J R Fowler as trustees for the Wyeburn Trust	U210418	Land Use (Dam) Water Permit (Dam Water) Water Permit (Divert Water) Land Use (Land Disturbance) Water Permit (Take Water)	Construct a dam with a maximum wall height of 6.2 metres: dam up to 36,000 cubic metres of water in a reservoir: divert sub-surface water beneath a storage dam: undertake excavations within Significant Wetland W3: Take C Class Wairau River FMU water from a proposed infiltration gallery (Grid Ref 1624725E 5390540N) up to a maximum rate of 1380 cubic metres per day	4816 State Highway 63, Wairau Valley, Marlborough	14/07/2021
143	104B	B L & C F Leov	U210473	Water Permit (Take Water) x2 Water Permit (Use Water)	Take Rai FMU water from well 027w/0065 up to a maximum rate of 268 cubic metres per day: Take Opouri FMU water from well 027w/0065 up to a maximum rate of 1,978 cubic metres per day; Use water for the irrigation of 80hectares of pasture	126 Bulford Road, Rai Valley	14/07/2021
144	125	Marlborough District Council	U180374	Extension to Lapse Date	Extension of the lapse date of Water Permit (Take Water) consent (U180374.1) to 1 March 2023	Conders Bend Road, Conders Bend	15/07/2021
145	104B	Central Holdings Ltd	U210107	Subdivision (Allotment Creation) Land Use (Activity) x2 Land Use (Land Disturbance)	Create five residential allotments and an esplanade reserve to vest: Authorise development of Pt Section 47 Wairau District in accordance with resource consent application: Authorise a vehicle crossing for proposed Lots 3-5 to be sited within 20 metres from the intersection of Lane Street and Dillons Point Road: Undertake earthworks on Pt Section 47 Wairau District associated with the subdivision and development approved	2 Dillons Point Road, Islington, Blenheim	15/07/2021



	Delegation	Consent Holder	Consent No.	Consent(s) Issued	Proposal	Site Location	Date Issued
146	87BA	AD Holdings 2020 Limited	U210517	Deemed Permitted Boundary Activity	Construct a dwelling house with attached garage which will encroach the recession plane and be within 1m of the southern boundary	8C Colemans Road, Springlands, Blenheim	15/07/2021
147	104B	P G Bown	U210030	Water Permit (Divert Water) Land Use (River Surface or Bed Activity) x2 Land Use (Activity) Land Use (Gravel Removal)	Divert Timms Creek: Beach Timms Creek gravels to form a preferential flow path and to undertake and maintain flood protection works: Undertake works in Timms Creek to reinstate and maintain an irrigation pipeline: Construct a 200 metre long stopbank: Extract up to 2000 cubic metres of gravel from the Wairau River to provide for the construction of a stopbank	51 Cat Creek Road, North Bank, Wairau Valley	16/07/2021
148	104B	W A Hutchison, Susa N Rudler	U210057	Water Permit (Take Water) Water Permit (Use Water)	Take Ohinemahuta FMU water up to a maximum rate of 238 cubic metres per day from wellP28w/4271: Use water for the irrigation of 2.45 hectares of pasture and 5.93 hectares of vineyard	182 Onamalutu Road, Onamalutu, Wairau Valley	16/07/2021
149	104B	Giesen Group Limited	U210252	Water Permit (Take Water) Water Permit (Use Water) x2	Take Riverlands FMU water from well P28w/4462 up to a maximum rate of 43,659cubic metres per year: use water for the irrigation of up to 17.5 ha of viticulture and 2.2 ha of pasture and crops: use water for ancillary uses	3189 State Highway 1, Riverlands, Marlborough	16/07/2021
150	104B	B D Stebbings	U210300	Discharge Permit (to Land)	Discharge treated domestic wastewater to land from a new wastewater system	Bill Bryants Road, Wairangi Bay	16/07/2021
151	104C	S J & H I Mackenzie	U210374	Subdivision (Boundary Adjustment)	Create two lots as a boundary adjustment	3209 State Highway 63, Wairau Valley, Marlborough	16/07/2021

	Delegation	Consent Holder	Consent No.	Consent(s) Issued	Proposal	Site Location	Date Issued
152	104C	Sanford Limited	U210387	Coastal Permit (Marine Farm)	Replacing U991307 and MPE694 for the continuation, using conventional longline methods, of an existing 2.58 hectare marine farm site 8118	Forsyth Bay, Pelorus Sound/Te Hoiere	16/07/2021
153	104B	R A & B J Paterson	U210502	Discharge Permit (to Land)	Discharge treated domestic wastewater to land from an existing wastewater system	293 Anakiwa Road, Anakiwa, Marlborough	16/07/2021
154	127	Port Marlborough New Zealand Limited	PLN/4/1/34	Change or Cancellation of Resource Consent Conditions	Change Condition C4 of resource consent PLN/4/1/34.05 to enable the debarking of logs to be carried out at the existing log marshalling yard	Shakespeare Bay. Picton	19/07/2021
155	127	Marlborough District Council (Marlborough Roads)	U161278	Change or Cancellation of Resource Consent Conditions	Cancel Condition 12 and vary Condition 9 of Land Use (Gravel Removal) consent (U161278.1) and cancel Conditions 8 & 9 and vary Condition 7 of Land Use (Activity) consent (U161278.4)	Maori Ford Bridge, Waihopai River, Waihopai	19/07/2021
156	127	Marlborough District Council (Marlborough Roads)	U161293	Change or Cancellation of Resource Consent Conditions	Cancel Conditions 5 and 6 of Land Use (Activity) consents (U161293.10, U161293.11 & U161293.12)	Upper Awatere Valley, Awatere	19/07/2021
157	127	Marlborough District Council (Marlborough Roads)	U180525	Change or Cancellation of Resource Consent Conditions	Cancel Condition 7 & 10, vary Condition 6 of Land Use (Activity) consent (U180525.5)	Waima River (downstream of the Ure Road Bridge) on the eastern bank, Awatere	19/07/2021
158	104B	Outer Limits Limited	U200988	Subdivision (Allotment Creation) Land Use (Activity)	Create 13 industrial allotments: Authorise a vehicle crossing for Lot 6 within 20 metres of an intersection	Westwood Avenue, Blenheim	19/07/2021

	Delegation	Consent Holder	Consent No.	Consent(s) Issued	Proposal	Site Location	Date Issued
159	104B	Konrad Wines Limited	U210204	Subdivision (Boundary Adjustment) Land Use (Activity) Water Permit (Take Water) Water Permit (Use Water)	Provide for a boundary, adjustment: Allow the existing, buildings to encroach the minimum boundary setback for the buildings adjoining, the adjoining boundary of Lot 1 and Lot 2: Take 5 cubic metres per day of Waihopai River surface water from an intake gallery; Use water for domestic purposes on Lot 1	706 Waihopai Valley Road, Waihopai Valley, Marlborough	19/07/2021
160	104B	D I & B M Kelly and E E Turner trustees of The Queen Charlotte Trust	U210500	Land Use (Activity)	Construct a retaining wall	Christys Bay, Queen Charlotte Sound, Picton	19/07/2021
161	104A	Ward Wine Company Limited	U210524	Land Use (Activity)	Install and operate an Orchard Rite 2430 frost fan with a CAT engine	200 Tachalls Road, Ward, Marlborough	19/07/2021
162	104B	P J Bigley, J & R A Fischer, A H Donaldson, K J Donaldson, J B Seggie, A C Seggie, F A Jacobsen, S B Kilmister, C A G Seggie, (as trustees of the J & A Seggie Family Trust)	U210361	Coastal Permit (Marine Farm)	Replacing MFL035, U050066 and MPE810 for the continuation, using conventional longline methods, of an existing 5.1 hectare marine farm site 8471	Schnapper Point, Kenepuru Sound, Marlborough	20/07/2021
163	104C	Sea Health Foods Limited	210435	Coastal Permit (Marine Farm)	Replacing MFL187 and U090278 for the continuation, using conventional longline methods, of an existing 9.2 hectare marine farm site 8560	Otatara Bay, Pelorus Sound, Marlborough	20/07/2021
164	104B	Alabama Road Ltd	U210465	Subdivision (Allotment Creation)	Create two residential allotments	20 Buller Street, Picton	20/07/2021

	Delegation	Consent Holder	Consent No.	Consent(s) Issued	Proposal	Site Location	Date Issued
165	104B	J F McCormick, F F & T H Franken	U210431	Subdivision (Allotment Creation) Land Use (Building)	Create four new allotments and for existing house on proposed Lot 1 to intrude 0.16m into recession plane in relation to proposed right of way	24 & 26 Stratford Street, Blenheim	20/07/2021
166	139	Rural Connectivity Group Limited	U210495	Certificate of Compliance	Establish, operate and maintain a telecommunication facility	712 Kenepuru Road, Mahau Sound, Marlborough Sounds	21/07/2021
167	104B	R H & R L Partridge	U210506	Land Use (Activity)	Construct a 15.5 m by 9 m garage extension within the required front and side yard setbacks	51 Edgewater Place, Rarangi, Marlborough	21/07/2021
168	104B	R J & M A Acton-Adams and D J Studholme	U210480	Discharge Permit (to Land)	Discharge treated domestic wastewater to land	644 Kenepuru Road, Mahau Sound, Marlborough Sounds	22/07/2021
169	104B	S J & D M Feltham	U210482	Water Permit (Take Water) Water Permit (Use Water) x2	Abstract Wairau Aquifer FMU water up to a maximum rate of 10,215 cubic metres per year from well P28w/0524: use water for the irrigation of up to 4.5 hectares of vineyard: use water for ancillary uses outside the irrigation season	130 Morgans Road, Grovetown, Blenheim	22/07/2021
170	104B	D M & S A Vitale	U210494	Land Use (Activity)	Minor encroachment that exceeds a height equal to the recession plane angle under Rule 5.2.1.6	6 Battys Road, Springlands, Blenheim	22/07/2021
171	104B	P G & K E Richmond	U210514	Land Use (Activity)	Retrospective resource consent to authorise a garage extension and a detached sleepout, each built within 8 metres of the southern boundary	109 Boons Valley Road, Waikawa, Picton	22/07/2021
172	104B	T & D E Inger	U210519	Land Use (Activity)	Construct a deck within 8 metres of the western boundary and to install two water tanks within 8 metres of the eastern boundary	17 Tai Clos, Kaiuma Bay, Linkwater, Marlborough	22/07/2021
173	87BA	H M Harnett, S D Pratt	U210520	Deemed Permitted Boundary Activity	Construct a dwelling which will encroach the 25 metre side yard boundary setback	433 Blind River Loop Road, Seddon, Marlborough	22/07/2021
174	104A	Lansdowne Vineyard No.1 Limited	U210525	Land Use (Activity) x4	Install and operate four Orchard Rite 2430 frost fans with a CAT engine	662 Old Renwick Road, Renwick, Marlborough	22/07/2021

	Delegation	Consent Holder	Consent No.	Consent(s) Issued	Proposal	Site Location	Date Issued
175	104B	P H & K A Taylor	U210091	Land Use (Activity)	Operate a fertiliser blending activity	118 Beacon Road, Dillons Point, Blenheim	23/07/2021
176	104B	NZSF Rural Land Limited	U200720	Water Permit (Take Water) x6 Water Permit (Use Water) x3 Land Use (River Surface or Bed Activity) Water Permit (Divert Water)	Take A Class Awatere FMU water from two existing galleries in the Awatere River (Grid Ref 1672135E 5378592N and Grid Ref 1670746E 5375916N) up to a maximum rate of 1104.6 cubic metres per day; Take A Class Awatere FMU water from an existing intake in Altimarloch Stream (Grid Ref 1670978E 5378800N) up to a maximum rate of 1150 cubic metres per day; Take B Class Awatere FMU water from two existing galleries in the Awatere River (Grid Ref 1672135E 5378592N and Grid Ref 1670746E 5375916N) up to a maximum rate of 1223.6 cubic metres per day; Use water for the irrigation of up to 209.3 hectares of vineyard; Use water for frost protection of 15.34 hectares of vineyard: Take A Class Awatere FMU water from two existing galleries in the Awatere River (Grid Ref 1672135E 5378592N and Grid Ref 1670746E 5375916N) up to a maximum rate of 1104.6 cubic metres per day outside of the irrigation season; Use water for ancillary uses outside of the irrigation season; Take C Class Awatere FMU water from two existing galleries in the Awatere River (Grid Ref 1672135E 5378592N and Grid Ref 1670746E 5375916N) up to a maximum rate of 2328.2 cubic metres per day; Take C Class Awatere FMU water from an existing intake in Altimarloch Stream (Grid Ref 1670978E 5378800N) up to a maximum rate of 1150 cubic metres per day; Divert the Awatere River to enable works associated with the maintenance of two infiltration galleries (Grid Ref 1672135E 5378592N and Grid Ref 1670746E 5375916N); Excavate riverbed gravels to form a diversion bund and to undertake maintenance works on two infiltration galleries (Grid Ref 1672135E 5378592N and Grid Ref 1670746E 5375916N).	Awatere Valley Road, Awatere Valley	26/07/2021

	Delegation	Consent Holder	Consent No.	Consent(s) Issued	Proposal	Site Location	Date Issued
177	104B	G J & R M Gane as trustees of the Gane Family Trust	U210383	Water Permit (Take Water) Water Permit (Use Water)	Take Wairau Aquifer FMU water up to a maximum of 50,700 cubic meters per year from well P28w/1619 and P28w/2087	51 Selmes Road, Rapaura, Blenheim	26/07/2021
178	104B	S T Fyfe	U210456	Subdivision (Allotment Creation) Land Use (Building)	Create two allotments; For the walls of existing house to be closer than one metre from the proposed right of way boundary, and for the existing house to intrude 0.61m into the recession plane of proposed right of way boundary	3 Stratford Street, Blenheim	26/07/2021
179	104B	H S Rood, M N M Rood	U210469	Subdivision (Boundary Adjustment)	Undertake a boundary adjustment subdivision and to change existing consent notice conditions	1735 Queen Charlotte Drive, Linkwater, Marlborough	26/07/2021
180	104B	R Me Gifford, R M McLeod	U210516	Discharge Permit (to Land) Land Use (Activity)	Discharge secondary treated domestic wastewater to land via a new onsite wastewater management system: Construct a sleep-out within 8 metres of Dowlings Creek	260 Hammerichs Road, Rapaura, Blenheim	26/07/2021
181	127	S A Vitale and D M Vitale	U180055	Change or Cancellation of Resource Consent Conditions	Change Condition 1 to refer to a revised Scheme Plan (14373 sheet SP03 Issue A) and delete Conditions 9 & 13 of Subdivision (Allotment Creation) consent (U180055.1) as they are no longer applicable due to the dwelling being moved onto proposed Lot 1.	6 Battys Road, Springlands	28/07/2021
182	104B	Alabama Road Limited	210189	Subdivision (Allotment Creation) Land Use (Activity) Land Use (Building)	Create three allotments: Authorise a vehicle crossing for proposed lot 1 to be sited within 25 metres from the intersection of Edith Street and Maxwell Road: Authorise development of Lot 1 Deposited Plan 1571 in accordance with resource consent application	187 Maxwell Road, Redwoodtown, Blenheim	28/07/2021



	Delegation	Consent Holder	Consent No.	Consent(s) Issued	Proposal	Site Location	Date Issued
183	136	Marlborough District Council	U171044	Transfer of Abstraction and/or Use Site	Transfer the abstraction site of water permit consent from well O28w/0015 to wells O28w/0015 and 11077	Keith Coleman Lane, Wairau Valley	29/07/2021
184	104B	J M King-Turner, R King-Turner, Z F King-Turner, R D Symns	U210536	Discharge Permit (To Land) Land Use (Land Disturbance)	Discharge treated domestic wastewater to land: Undertake excavation of approximately 150m <sup>3</sup> to create a vehicle parking area	4206 Croisilles-French Pass Road, Fitzroy Bay, Marlborough Sounds	29/07/2021
185	104B	J Vivian	U210370	Subdivision (Allotment Creation) Land Use (Activity)	Create 2 allotments: Breach of the recession plane by the proposed dwelling to be built on Lot 2, with the eastern and western boundaries	83 & 83A Maxwell Road, Blenheim	30/07/2021
186	243	Kinzett Family Trustee Limited	U210407	Easement Conditions Revocation	Cancellation of redundant easements	230 Middle Renwick Road, Springlands, Blenheim	30/07/2021
187	104B	W D & J E Beaumont	U210532	Land Use (Activity)	Construct a 13m x 6m boat shed which will encroach the recession plane along the southern boundary and exceed the permitted site coverage	Croisilles-French Pass Road, Okiwi Bay	30/07/2021
188	104B	Marlborough Research Centre Trust	U210555	Land Use (Activity)	Undertake works and paving within the root zone/drip line of Notable Trees	85 Budge Street, Riversdale, Blenheim	30/07/2021
189	104B	W G C Gerard	U210372	Discharge Permit (to Land) Land Use (Activity)	Discharge secondary treated domestic wastewater to land via a new onsite wastewater management system: Construct a new dwelling that encroaches the minimum side yard boundary setback to the north	Hopai Bay, Crail Bay, Pelorus Sound/Te Hoiere	02/08/2021
190	104B	A M Best, J C Leggett, Wisheart Macnab & Partners Trustee Company Limited	U210483	Coastal Permit (Mooring)	Replacing U090796 for a mooring M1944	Whatamango Bay, Queen Charlotte Sound	02/08/2021

	Delegation	Consent Holder	Consent No.	Consent(s) Issued	Proposal	Site Location	Date Issued
191	104B	Marlborough Mountain Bike Club (Inc)	U210499	Land Use (Activity) x2	Stage the start and finish of the National Schools Mountain Biking Event, a Special event: Use the farm park tracks and private farmland for the National Schools Mountain Biking Event, a special event held over four (4) consecutive days	Wither Hills Farm Park, Blenheim	02/08/2021
192	104B	Marathon Downs Limited	U210522	Land Use (Activity)	Install and operate three (3) Orchard Rite 2600 frost fans with CAT engines	737 Marama Road, Seddon, Marlborough	02/08/2021
193	87BA	Yan Cao	U210549	Deemed Permitted Boundary Activity	Construct a dwelling that will encroach the northern and southern boundary recession planes	32 Golf View Close, Fairhall, Marlborough Ridge, Marlborough	02/08/2021
194	104B	Babich Wines Limited	U210298	Land Use (Dam) Water Permit (Dam Water) Land Use (Land Disturbance)	Construct a 45,000 cubic metre storage reservoir that encroaches the western side boundary setback, and is within 8 metres of Ruakanakana Creek (Waihopai - Ruakanakana Creek Rewatering Race), and 500 metres upstream of a dwelling: Dam up to 45,000 cubic metres of water within a storage reservoir: Undertake excavation in excess of 100 cubic metres and to place fill in excess of 1000 cubic metres within a Level 2 Flood Hazard Area and within 8 metres of Ruakanakana Creek (Waihopai - Ruakanakana Creek Rewatering Race) associated with the construction of a storage reservoir	19 Fareham Lane, Wairau Valley	03/08/2021
195	125	G I T & E M Evans	U160987	Extension to Lapse Date	Extend the lapse date by six months to 15 March 2022 for Subdivision (Boundary Adjustment) consent	4614 Waihopai Valley Road, Waihopai	04/08/2021

	Delegation	Consent Holder	Consent No.	Consent(s) Issued	Proposal	Site Location	Date Issued
196	221	C L Matthews & J M Matthews	U210213	Change or Cancellation of Consent Notice Conditions	Amend Condition 5 and cancel Conditions 7 and 13 of Consent Notice 7917532.1	Nydia Bay, Pelorus Sound / Te Hoiere	04/08/2021
197	221	C E Egan; S P Frater	U210231	Change or Cancellation of Consent Notice Conditions	Amend Condition 5 and cancel Conditions 7 and 13 of Consent Notice 7917532.1	Nydia Bay, Pelorus Sound / Te Hoiere	04/08/2021
198	104B	Whitehaven Wine Company Limited	U210303	Land Use (Activity)	Install and operate one Orchard Rite 2430 frost fan with a CAT engine in a Level 3 Flood Hazard Area	3506 State Highway 63, Wairau Valley, Marlborough	04/08/2021
199	104B	S M & L S Bowers, G M Burgess	U210432	Subdivision (Allotment Creation) Land Use (Activity)	Create two residential allotments: authorise the existing dwelling on Lot 1 to encroach the recession plane and yard setback of the right of way boundary	20 Alma Street, Renwick	04/08/2021
200	104B	I A Rogers and Parr Rogers Nominees Limited as trustees of the IA Rogers Family Trust	U210446	Land Use (Activity)	Establish a vineyard within a Level 3 Flood Hazard Area	3506 State Highway 63, Wairau Valley, Marlborough	04/08/2021
201	104A	D M & S M Lawry	U210488	Subdivision (Allotment Creation)	Create four residential allotments	81-83 Havelock Street, Renwick	04/08/2021
202	104A	J A M W Woledge	U210521	Subdivision (Allotment Creation)	Create two fee simple allotments	32 Waimarama Street, Waikawa, Picton	04/08/2021
203	104B	T & S D Caspritz	U210531	Coastal Permit (Mooring)	Establish a new swing mooring M3293	Milton Bay, Bay of Many Coves	04/08/2021
204	104A	Rakaunui Vineyard Limited	U210563	Land Use (Activity)	Installation and operation of one (1) FrostBoss C59 frost fan with a Perkins Engine	287 Brancott Road, Fairhall, Marlborough	04/08/2021
205	127	Pelorus Boating Club Incorporated, Waikawa Boating Club Incorporated, Mana Cruising Club Incorporated	U950472	Change or Cancellation of Resource Consent Conditions	Change Conditions 2, 4, 6 and 8 of consent U950472 to enable an increase to the maximum vessel size using club mooring 229	Governors Bay, Queen Charlotte Sound/Totaranui	05/08/2021

	Delegation	Consent Holder	Consent No.	Consent(s) Issued	Proposal	Site Location	Date Issued
206	127	Pelorus Boating Club Incorporated, Waikawa Boating Club Incorporated, Mana Cruising Club Incorporated	U950504	Change or Cancellation of Resource Consent Conditions	Change Conditions 2, 4, 6 and 8 of U950504 to enable the relocation of and an increase to the maximum vessel size using club mooring M231	Meretoto/Ship Cove, Queen Charlotte Sound/Totaranui	05/08/2021
207	127	E R Stevenson & G J Timms; S A & C J MacDonell; R M & R T Van Gelder; Small House Trustee Limited (Trustee of the Small House Trust); JAHM Investments Limited; D U & S A Pedersen & R D Symns; M R & L M Burgess; N R Saul; C M Hutchison; G L Beattie & J A French; Port Marlborough	U200049	Change or Cancellation of Resource Consent Conditions	Vary Condition 2 of Water Permit (Take Water) consent (U200049.1)	Oyster Bay, Port Underwood	05/08/2021
208	210511	John Peter McAllister, Bronwen Lockley Dickson	U210511	Discharge Permit (to Land)	Discharge treated domestic wastewater to land from a new onsite wastewater system	124 Port Underwood Road, Waikawa, Picton	05/08/2021
209	104B	Scott Thomas Fyfe	U210543	Subdivision (Allotment Creation) Land Use (Land Disturbance)	Create four residential Allotments; Create a services trench for water pipelines within a groundwater protection area	12A Farmar Street, Mayfield, Blenheim	05/08/2021
210	104A	Whitehaven Wine Company Limited	U210569	Land Use (Activity) x9	Install and operate nine (9) Orchard Rite 2430 frost fans with CAT engines	3397 State Highway 63, Wairau Valley, Mount Richmond Forest Park, Marlborough	05/08/2021
211	87BA	C J & C R C Bradley	U210574	Deemed Permitted Boundary Activity	Construct a 7m x 10.5m garage that will be 1m from the western boundary	402 Northbank Road, Kaituna, Renwick	05/08/2021

	Delegation	Consent Holder	Consent No.	Consent(s) Issued	Proposal	Site Location	Date Issued
212	127	Pelorus Boating Club Incorporated, Waikawa Boating Club Incorporated, Mana Cruising Club Incorporated	U950505	Change or Cancellation of Resource Consent Conditions	Change Conditions 2, 4, 6 and 8 of consent U950505 to enable existing mooring M232 to be relocated and used by vessels up to 18.0 metres in length	Tawa Bay, Queen Charlotte Sound/Totaranui	06/08/2021
213	127	Pelorus Boating Club Incorporated, Waikawa Boating Club Incorporated & Mana Cruising Club Incorporated	U041408	Change or Cancellation of Resource Consent Conditions	Change Conditions 1 and 3 of consent U041408 to enable existing club mooring M2675 to be repositioned and used by vessels up to 18.0 metres in length	School House Bay, Resolution Bay	06/08/2021
214	127	Pelorus Boating Club Incorporated, Waikawa Boating Club Incorporated, Mana Cruising Club Incorporated	U950506	Change or Cancellation of Resource Consent Conditions	Change Conditions 2, 4, 6 and 8 of consent U950506 to enable existing club mooring 229 to be repositioned and used by vessels up to 18.0 metres in length	Kaipakirikiri Bay, Queen Charlotte Sound/Totaranui	06/08/2021
215	127	Pelorus Boating Club Incorporated, Waikawa Boating Club Incorporated, Mana Cruising Club Incorporated	U981064	Change or Cancellation of Resource Consent Conditions	Change Condition 2 of consent U981064.12 to allow for a change of coordinates for club mooring M12	Kaipakirikiri Bay, Queen Charlotte Sound/Totaranui	06/08/2021
216	104C	Mount Adde Limited, R S & H B Harris	U210377	Subdivision (Allotment Creation)	Create three allotments	306, 330 & 343 Awatere Valley Road, Seddon	06/08/2021
217	127	Pelorus Boating Club Incorporated, Waikawa Boating Club Incorporated & Mana Cruising Club Incorporated	U041407	Change or Cancellation of Resource Consent Conditions	Change Conditions 1 and 3 of consent U041407 to enable existing club mooring M2674 to be repositioned and used by vessels up to 18.0 metres in length	Cooper Point, Queen Charlotte Sound/Totaranui	06/08/2021
218	104B	Deanne Brandon Stirling, Andrea Lynley D B & A L Stirling	U210402	Discharge Permit (to Land) Land Use (River Surface or Bed Activity) Land Use (Activity)	Discharge treated domestic wastewater to land from a new wastewater system: Install a culvert extension longer than 12 metres in a stream: Undertake works in road reserve	Port Underwood Road, Whatamango	06/08/2021

	Delegation	Consent Holder	Consent No.	Consent(s) Issued	Proposal	Site Location	Date Issued
219	104B	N A Higgins	U210484	Subdivision (Allotment Creation) Land Use (Activity)	Create two allotments: authorise an encroachment by the dwelling on proposed Lot 2 into the recession plane and be within 1m of the proposed right of way to Lot 1	278A Scott Street, Witherlea, Blenheim	06/08/2021
220	104B	A M Archer	U210512	Discharge Permit (to Land) Land Use (Activity)	Discharge treated domestic wastewater to land from a new wastewater system: Construct a pole shed and dwelling with attached carport within the Marlborough Sounds Outstanding Natural Feature and Landscape overlay	2589 Archers Road, Tennyson Inlet, Mount Richmond Forest Park, Marlborough	06/08/2021
221	104B	B G & C K Mazey	U210537	Discharge Permit (to Land)	Discharge secondary treated domestic wastewater to land via an existing onsite wastewater management system	420 Moetapu Bay Road, Moetapu Bay, Linkwater	06/08/2021
222	104B	R Paterson	U210562	Discharge Permit (to Land)	Discharge treated domestic wastewater to land via a new onsite wastewater management system	36 Lady Cobham Grove, Anakiwa, Marlborough	06/08/2021

Record No: 21177578