

Figure i. Abundance of Kingdom types that are parasites in the samples. The Kingdom types that fall under parasites included Animalia, Chromista, Eukaryota, Metazoa, and Protista, which did not follow a consistent pattern suggestive of an antibiotic-mediated dysbiosis. Kingdom and Animalia were the most common, followed by Protista; Metazoa was least.

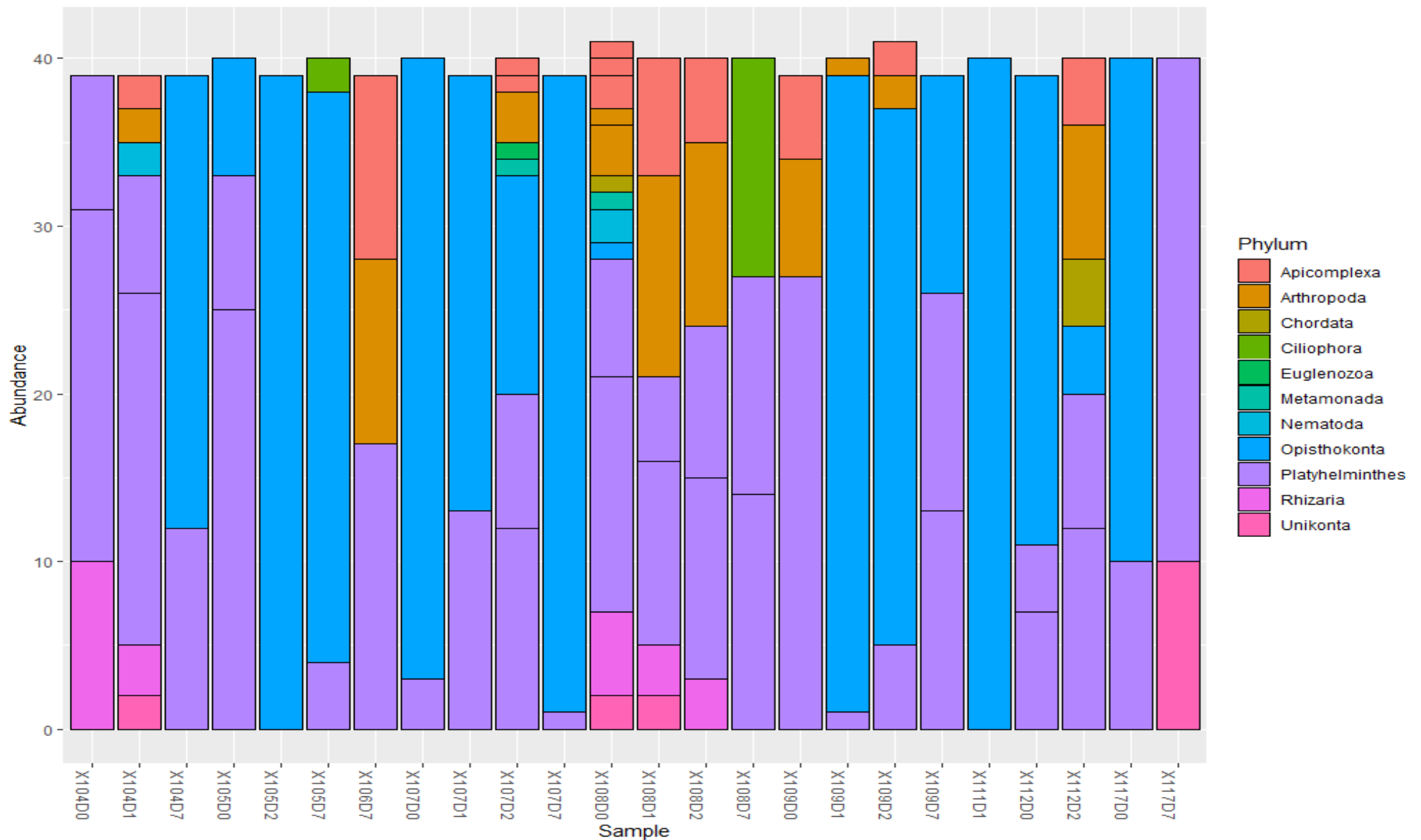


Figure ii. Abundance of various Phyla that are parasites. Platyhelminthes and Opisthokonta were the most common parasites in the samples. The abundance levels of the various parasites per sample does not suggest antibiotic-mediated changes in these parasites as they could increase or decrease over the duration of the antibiotic therapy.

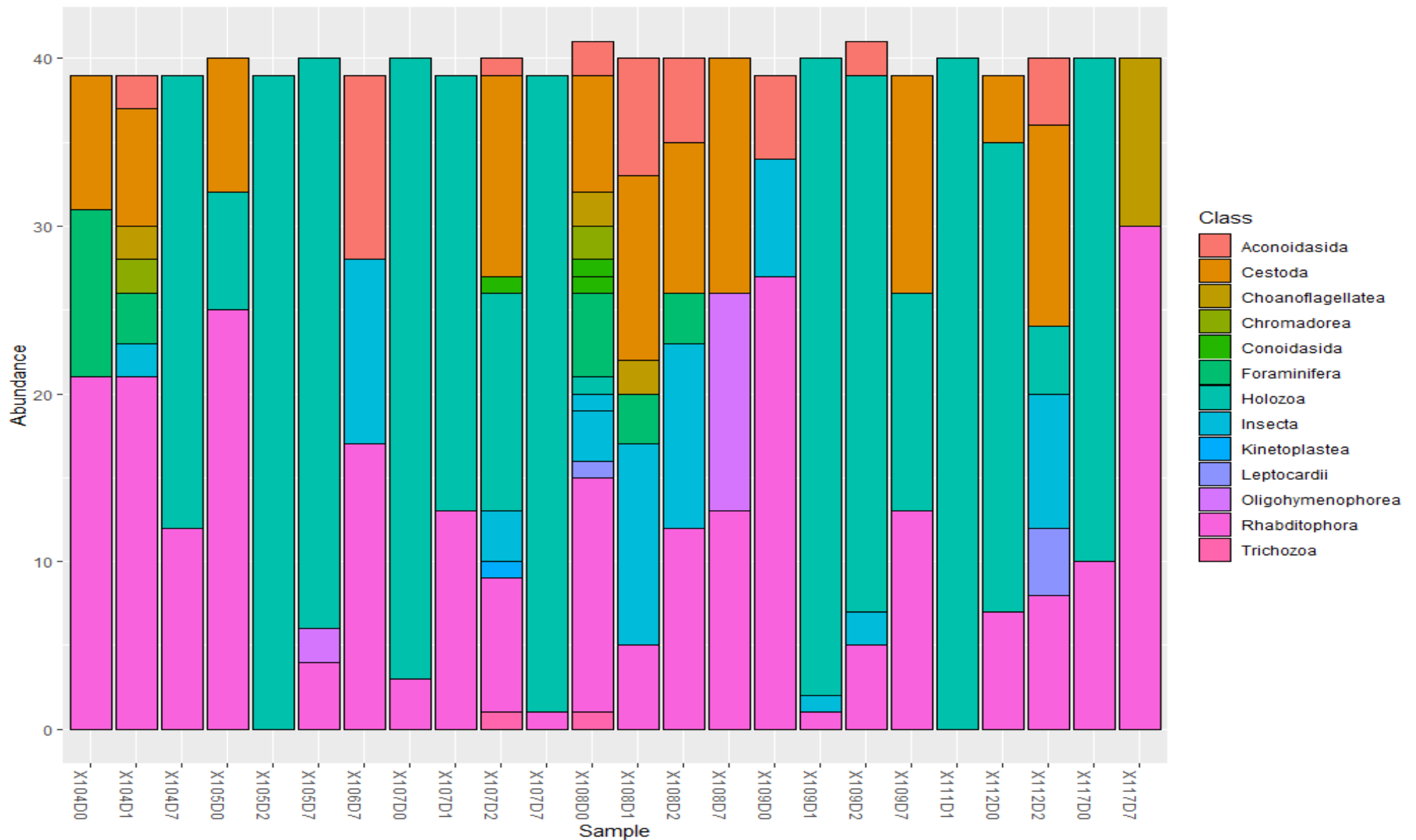


Figure iii. Abundance of Parasitic Classes in the various samples. The commonest classes were Rhabditophora and Holozoa, but their abundance patterns did not increase or decrease with antibiotic usage.

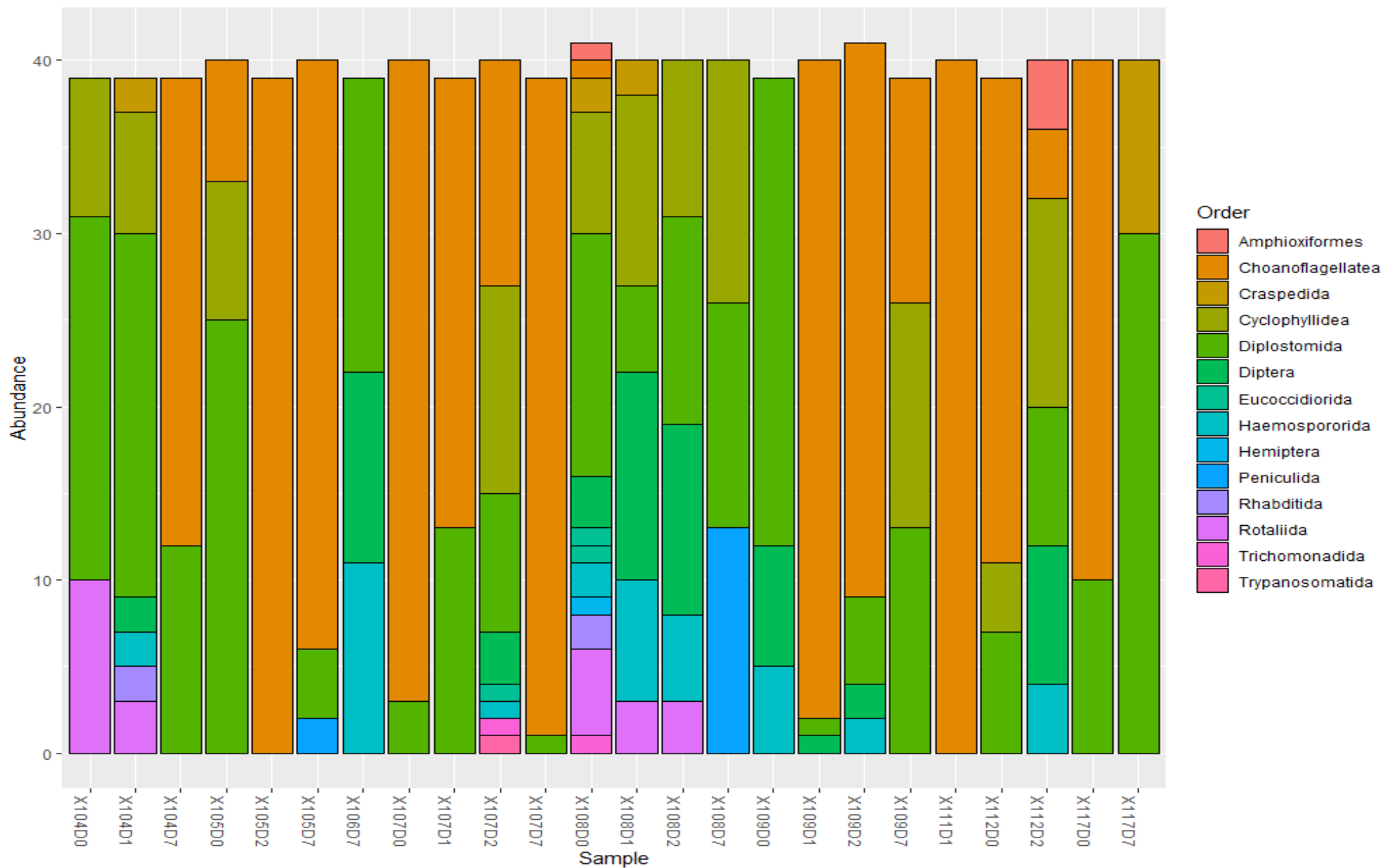
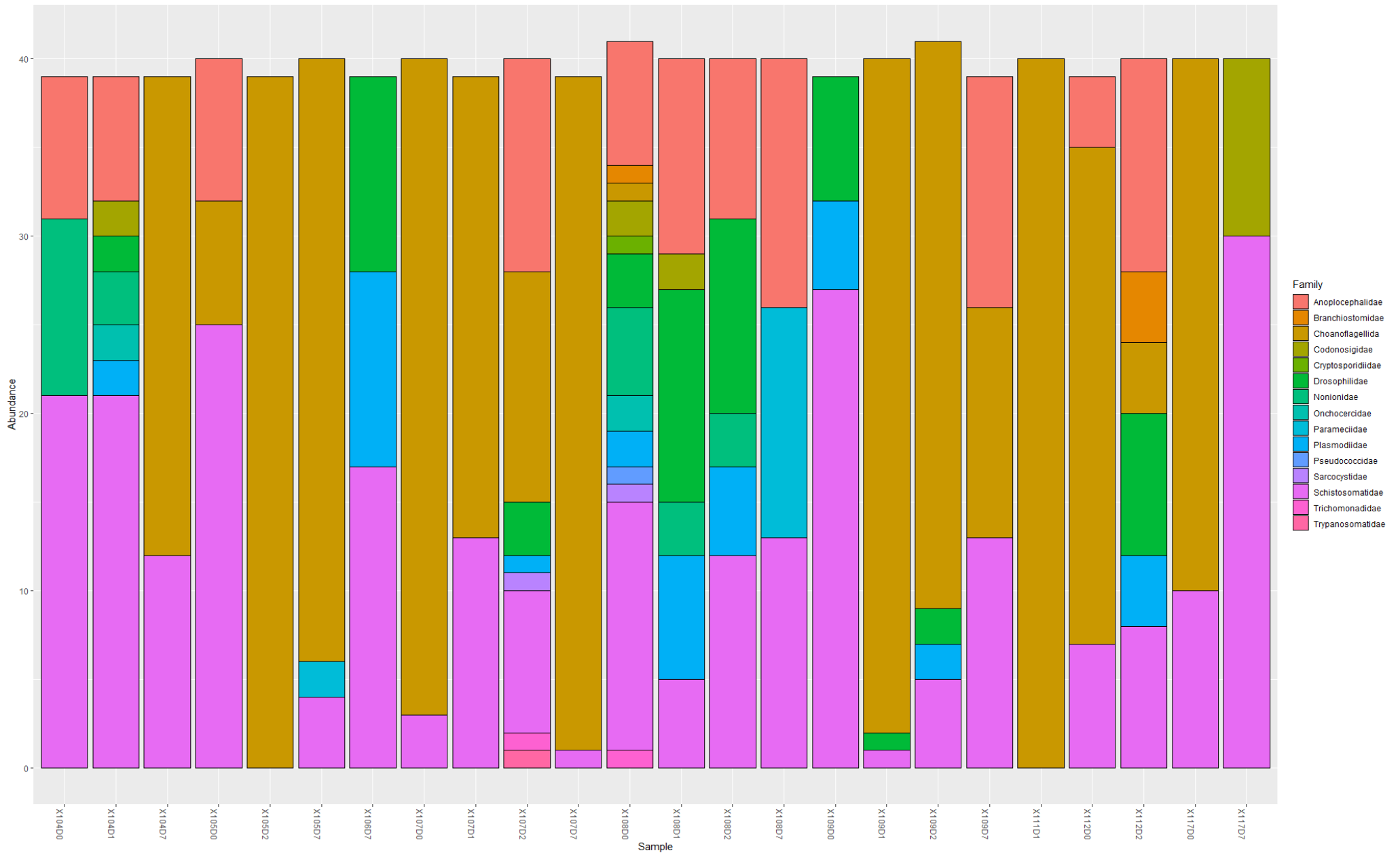


Figure iv. Abundance of parasitic orders in the samples. Common parasitic orders included Diplostomida and Amphioxiformes; however, the changes did not consistently follow the use of antibiotics.



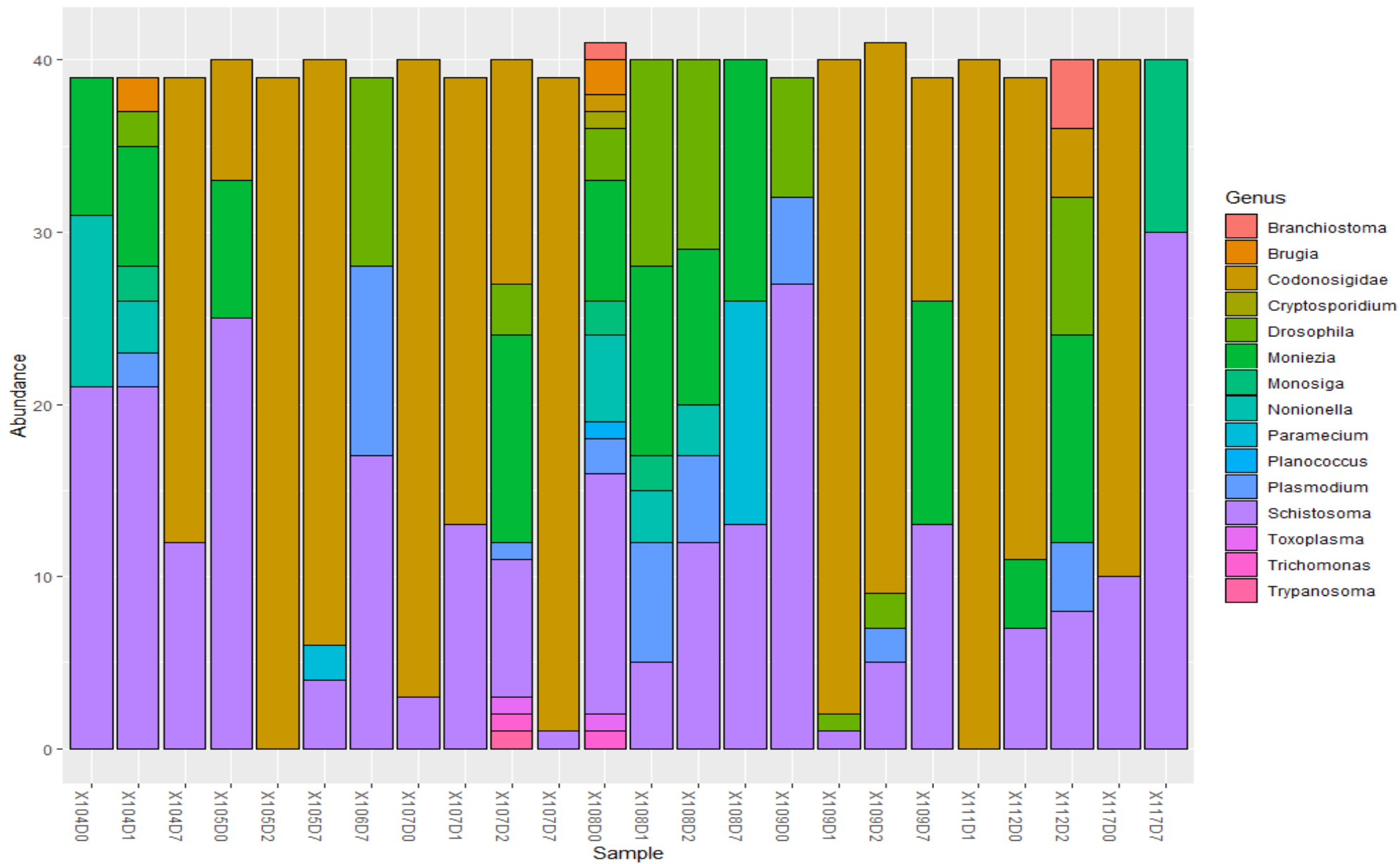


Figure vi. Abundance of parasitic genera in the samples. Common genera included *Schistosoma*, *Codonosigidae*, and *Moniezia*. The variations in the abundance were not reflective of the antibiotic usage over time.