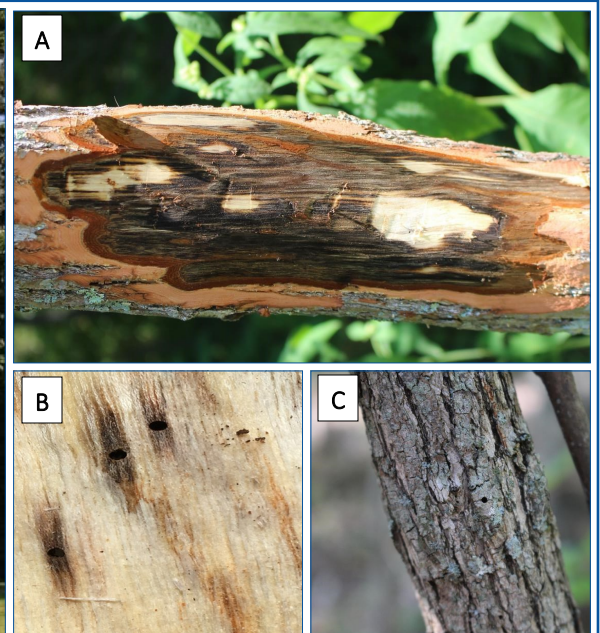


TSU NURSERY NEWS TO USE

ISSUE 7
OCTOBER 1, 2019

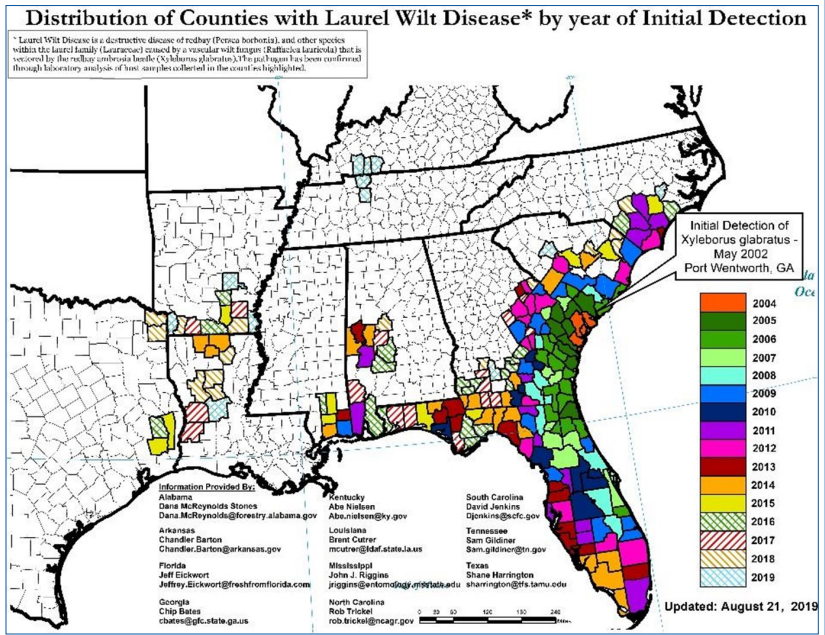


SASSAFRASS WITH LAUREL WILT DISEASE; photo credit: Dr. Alan Windham



LAUREL WILT CONFIRMED IN SASSAFRASS. Laurel wilt is a vascular disease caused by the fungus *Raffaelea lauricola*. It is transmitted by the redbay ambrosia beetle, *Xyleborus glabratus*. The disease affects and kills members of the laurel family. Confirmed hosts in the U.S. include redbay and sassafras.

Trees freshly attacked by *X. glabratus* exhibit few initial symptoms. Removal of bark with a draw knife or hatchet will reveal dark brown discolored sapwood (A). Small strings of compacted sawdust, aka frass tubes or toothpicks, may protrude from the bark at the point of entry, however, these tubes destroy easily (C). Removal of bark at the point of attack reveals holes surrounded by a dark stain, extending into surrounding tissue (B). The stain is the tree's response to infection by the fungus, which spreads through much of the outer sapwood. Attacked trees eventually exhibit wilted foliage with a reddish or purplish discoloration. Foliar discoloration may occur first within a section (major branch) or throughout the entire crown. The foliage eventually browns but remains attached. As the host weakens and dies, it is typically colonized by several other species of ambrosia beetles. We will continue to update the Tennessee nursery industry as information becomes available, however, you can stay up-to-date by monitoring the USDA National Invasive Species Information Center at <https://www.invasivespeciesinfo.gov/profile/laurel-wilt>.



BOXWOOD DISEASES & PESTS



NOVEMBER 13TH, 9am - 12pm

The Pavilion at TSU Farm

1946 Ed Temple Blvd
Nashville, TN 37208

9:00 am CLOUDING BOXWOODS

Josiah Lockard, Josiah Lockard & Associates

9:45 am BOXWOOD DISEASES

Dr. Fulya Baysal-Gurel, TSU NRC, Plant Pathologist

11:30 am BOXWOOD INSECT PESTS

Amy Dismukes, TSU NRC, Nursery Extension Specialist

12:00 pm QUESTIONS and adjourn

NOVEMBER 14TH, 9am - 12pm

Wilson County Fairgrounds

945 E Baddour Pkwy
Lebanon, TN 37087

9:00 am BOXWOOD DISEASES

Dr. Fulya Baysal-Gurel, TSU NRC, Plant Pathologist

10:45 am Management Practices for BOXWOODS

Lucas Holman, TSU Wilson Co. Extension

11:30 am BOXWOOD INSECT PESTS

Amy Dismukes, TSU NRC, Nursery Extension Specialist

12:00 pm QUESTIONS and adjourn

NOVEMBER 15TH, 9am - 12pm

Montgomery County Extension Office

1030 Cumberland Heights Road, Ste. A
Clarksville, TN 37040

9:00 am BOXWOOD DISEASES

Dr. Fulya Baysal-Gurel, TSU NRC, Plant Pathologist

10:45 am Management Practices for BOXWOODS

Karla Kean, TSU Montgomery Co. Extension

11:30 am BOXWOOD INSECT PESTS

Amy Dismukes, TSU NRC, Nursery Extension Specialist

12:00 pm QUESTIONS and adjourn

REGISTRATION REQUIRED! To register, please complete the link at <https://forms.gle/1f1knjfqQoFfW2tr6>

NEW! Confirmed in the Americas in November of 2018 by Jason Smith, Florida Forest Pathologist, HORNBEAM RUST, a European pathogen, has made its way to Tennessee.

Confirmed in Davidson County, *Melampsorium carpini* affects *Carpinus caroliniana* (American hornbeam), *Ostrya virginiana* (American hop hornbeam) and *Carpinus betulus* (European hornbeam). Although European hornbeam show slightly more tolerance to the pathogen, due to its history overseas, than the American hornbeam, the pathogen may result in an aesthetic issue and should be notated, reported and considered for treatment the following year in nursery stock. More information will follow as controls and reports are updated.



RUST ON HORNBEAM (TOP AND BOTTOM SIDES OF LEAVES)



OTIS L. FLOYD NURSERY
RESEARCH CENTER

472 Cadillac Lane
McMinnville, TN 37110
931-668-3023

<http://www.tnstate.edu/agriculture/nrc/>

