

TOSHIBA

TOSHIBA Label Printer

BCP Setting Tool Operation Manual

13th Edition: February, 2022

Toshiba Tec Corporation

TABLE OF CONTENTS

1. INTRODUCTION	3
SUPPORTED PRINTERS	3
SOFTWARE LICENSE AGREEMENT	4
FEATURES	4
OUTLINE OF THE FUNCTIONS	5
NOTATION	6
SCREENS USED IN THIS DOCUMENT	6
TRADEMARK AND COPYRIGHT	6
OPERATIONAL CONDITIONS	7
Software (Operation System)	7
Hardware	7
Interface	7
DISCLAIMER	8
2. INSTALLATION	9
INSTALLATION PROCEDURE	9
UNINSTALLATION	12

1. Introduction

Thank you for purchasing the "BCP Setting Tool", a setting tool for the label printers of Toshiba Tec Corporation (hereinafter referred to as "Toshiba Tec").

This document gives you a general description of the "BCP Setting Tool" (hereinafter referred to as "this product") including the installation procedure and features.

Supported Printers

This product supports the following printers:

- B-FP3D (203dpi)
- B-EX4T1-G/T (203dpi/305dpi)
- B-EX4T1-T JP (305dpi)
- B-EX4T2-G/T (203dpi/300dpi)
- B-EX4D2-G/T (203dpi/300dpi)
- B-EX4T2-H (600dpi)
- B-EX4T3-H (600dpi)
- B-EX6T1-G/T (203dpi/305dpi)
- B-EX6T3-G/T (203dpi/305dpi)
- B-LP2D (203dpi)
- B-EP2DL-G (203dpi)
- B-EP4DL-G/T (203dpi/300dpi)
- B-FP3D-GH52 (203dpi)
- BA410T-G/T(203dpi/300dpi)
- BA420T-G/T(203dpi/300dpi)
- B-FP2D (203dpi)
- B-EP4DL-G/T42 (203dpi/300dpi)
- B-EX4T1-G/T (203dpi/305dpi)-WLAN3
- B-EX4T1-T JP (305dpi)-WLAN3
- B-EX4T2-G/T (203dpi/300dpi)-WLAN3
- B-EX4D2-G/T (203dpi/300dpi)-WLAN3
- B-EX4T2-H (600dpi)-WLAN3
- BV410-G/T (203dpi/300dpi)
- BV420-G/T (203dpi/300dpi)

Software License Agreement

Please read the following terms and conditions of this Agreement carefully before using this Software. This is a legal agreement between you and Toshiba Tec. By installing this Software on your computer, you are agreeing to be bound by the terms and conditions of this Agreement.

1. You may use this Software on a single Toshiba Tec barcode printer acquainted from affiliated company, dealer or distributor of Toshiba Tec.
2. You shall not grant a sub-license, distribute, transfer, lend or otherwise dispose of this Software, in whole or in part, for the use of any third party other than you except as otherwise expressly provided herein.
3. You shall not modify, reverse engineering, reverse compile or reverse disassemble this Software, in whole or in part, except as otherwise expressly provided herein.
4. You shall not copy or make a duplicate (or backup copy) of this Software, in whole or in part, except as otherwise expressly provided herein.
5. All title and copyrights in and to this Software are owned by Toshiba Tec or its licensor.
6. Toshiba Tec or its licensor makes no representation or warranty, expressed or implied, including but not limited to the correction of any error or failure, maintenance and support relating to this Software.
7. IN NO EVENT SHALL TOSHIBA TEC OR ITS LICENSER BE LIABLE TO YOU OR ANY THIRD PARTIES FOR ANY DAMAGES, INCLUDING ANY LOST PROFITS, LOST SAVINGS OR OTHER INCIDENTAL OR CONSEQUENTIAL DAMAGE ARISING OUT OF THE USE OR INABILITY TO USE THIS PROGRAMS, EVEN IF TOSHIBA TEC HAS ADVISED OF THE POSSIBILITY OF SUCH DAMAGES, NOR FOR ANY CLAIMS BY A THIRD PARTY.
8. Toshiba Tec or its licensor will terminate this Agreement if you fail to comply with any of this terms and conditions. Upon the termination of this Agreement, you agree to uninstall the Software and return it to Toshiba Tec.
9. This Agreement shall become effective upon the installation or use of this Software by You. By installing or using this Software you hereby indicate your acceptance of these terms and conditions.

Features

This product is the software, which allows you to configure, download files to, and perform maintenance of the supported Toshiba Tec Label Printers under a Windows 8.1/10/Server2012R2/ Server2016 environment. Please note the Product is targeted for a user who is familiar with the Supported Printers.

Outline of the Functions

This product provides the following functions.

There are some restrictions depending on the communication method.

Function	Description	Communication method	
		One-to-one	Collective
Displaying the parameters	Obtains and displays the current parameter setting values.	Enabled	Disabled
Setting the parameters	Changes the specified parameter setting values.	Enabled	Enabled
Saving the parameter settings for backup	Saves parameter setting values in a file. When this file is opened, the saved values are retrieved.	Enabled	Enabled
Downloading ROM files	Sends the printer firmware to the printer for upgrading the program.	Enabled	Enabled
Downloading BASIC files	Sends BASIC files to the printer for upgrading the BASIC program.	Enabled	Enabled
Downloading Open Type Font files	Sends Open Type Font files to the printer for upgrading the font files.	Enabled	Enabled
Downloading HTML/XML ROM files	Generates ROM files for HTML/XML data. Generated files are updated by downloading ROM files.	Enabled	Enabled
Displaying the maintenance information	Obtains the self-diagnostic results from the printer including the firmware version, maintenance counter and parameter setting values, and displays such information.	Enabled	Disabled
Saving the maintenance information	Obtains the self-diagnostic results from the printer including the firmware version, maintenance counter and parameter setting values, and saves such information in a file.	Enabled	Enabled
Obtaining the log	Obtains dump data for error analysis from the printer, and saves them in a file.	Enabled	Enabled
Maintenance counter clear	Clears the maintenance counter data such as the running distance and print distance.	Enabled	Enabled
Parameter clear	Initializes the parameter settings to the values for the specified destination.	Enabled	Enabled
Print head check	Sends a head broken dots check command to the printer to check for any abnormality on the print head.	Enabled	Enabled
Reset	Sends a reset command to the printer for rebooting the printer.	Enabled	Enabled
Setup of the data storage area	Allocates or formats the storage areas for external characters, printer commands and BASIC files.	Enabled	Enabled
File transmission	Sends a selected file to the printer as a binary file.	Enabled	Enabled
Registering external characters	Creates an external character command file from a bitmap file. The created file is sent to the printer and registered as an external character.	Enabled	Enabled
Print test	Performs print tests to check the communication or print quality.	Enabled	Enabled

Notation

- Names of menus, screens, icons, buttons, tabs and items are enclosed in square brackets ([]).
E.g.: Click the [OK] button.
- Wordings shown on the computer monitor and the LCD message display of your printer are enclosed in double quotation marks (" ").
E.g.: "ON LINE".
- Titles of the chapters and sections to be referred to are enclosed in single quotation marks (' ').
E.g.: Please refer to 'Introduction'.

Screens Used in This Document

Screens shown in this document are examples used for explaining operations. Unless otherwise specified, an operation system used in this document is Windows 7. Please note that the screens shown may differ depending on your usage environment and conditions.

Trademark and Copyright

Microsoft and Windows are trademarks of Microsoft Corporation in the United States and other countries.

Other company and product names may be registered trademarks or trademarks of others.

Each company's registered trademarks and trademarks are not marked with ™ or ®.

This document uses the following abbreviations.

- Microsoft® Windows® 7 Ultimate and Microsoft® Windows® 7 Enterprise and Microsoft® Windows® 7 Professional and Microsoft® Windows® 7 Home Premium: Windows 7
- Microsoft® Windows® 8 Enterprise, Microsoft® Windows® 8 Professional, Microsoft® Windows® 8, Microsoft® Windows® 8.1 Enterprise, Microsoft® Windows® 8.1 Professional and Windows® 8.1: Windows 8
- Microsoft® Windows® 10 Enterprise, Microsoft® Windows® 10 Professional and Windows® 10: Windows 10
- Microsoft® Windows® Server 2012 R2, Standard Edition and Microsoft® Windows® Server 2012 R2, Datacenter Edition: Windows Server 2012R2
- Microsoft® Windows® Server 2016, Standard Edition and Microsoft® Windows® Server 2016, Datacenter Edition: Windows Server 2016

All technologies other than the above are exclusive property of Toshiba Tec.

Copyright of Toshiba Tec in Japan and other countries is expressed as:

Copyright© 2022 Toshiba Tec Corporation. All Rights Reserved.

Operational Conditions

This product can be used under the following system and environmental requirements.

Software (Operation System)

English operation systems of:

- Windows 8.1 (32-bit / 64-bit), Windows 10 (32-bit / 64-bit)
Windows Server 2012R2、Windows Server 2016

Component:

- Microsoft .NET Framework 4.5.2 and above

Hardware

A DOS/V (IBM AT compatible) machine must be used under the above Windows operation system and recommended conditions explained in the table below.

	Recommended Conditions
CPU	Intel® Pentium® 4 1.5 GHz or higher
Memory	256 MB or more
HDD	Free space of 1 GB or more
Display size	1024 x 768 pixels or more

Interface

Connections are made through the following interface.

- USB
- LAN (WLAN)
- Bluetooth (Virtual COM)
- COM (RS-232C)

When the serial interface is used, assign the installed printer driver port to a port other than the selected one. When USB is used, Plug and Play requests printer driver installation. This product does not need any printer driver. However, printer driver installation is requested in every connection. If you use this product frequently, it is recommended to install a printer driver. For information about the printer driver installation, refer to our web site.

When wired LAN or wireless LAN is used, it is possible to collectively send files to multiple printers connected to the network.

Before executing any processing, be sure to confirm there is no access to the printer from the other tools. If unrelated data are sent to the printer while the processing is executed, an error may occur.

Windows Server 2012R2 and Windows Server 2016 do not support Bluetooth.

Multiples interfaces cannot be used simultaneously on one printer.

Disclaimer

This product allows the Administrator/User to monitor printer statuses, check/change printer setting, and download a setting file on the computer monitor for the Supported Printers. When an invalid setting is made for the Supported Printers using this product, they may malfunction and may not be used afterwards.

This product is intended to be used by the Administrator who is familiar with the Supported Printers. The Setting Tool and Downloader must be used by the Administrator or under instructions of the Administrator.

Toshiba Tec shall not be liable for any outcome resulted from a failure to follow the above instructions (both the Product and the Supported Printers).

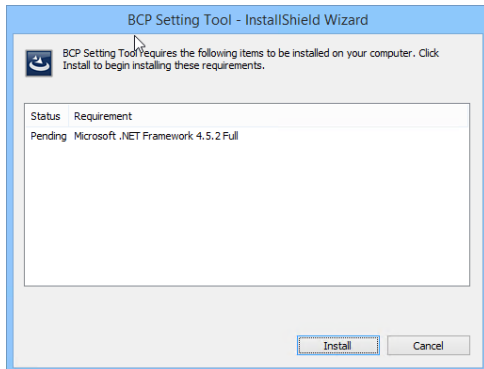
2. Installation

Installation Procedure

1. Double-click the setup program (BCPToolSetup.exe) of this product.

Note: The User Account Control dialog box may appear. In that case, click [Allow] to continue.

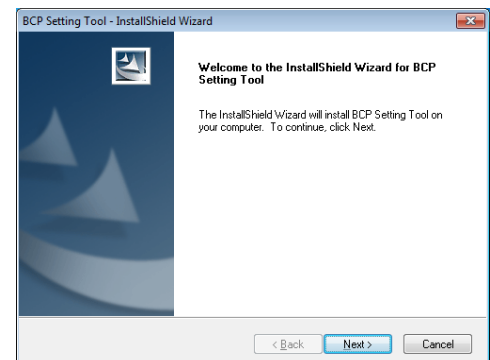
If the NET Framework 4.5.2 or later version is not installed, the following message appears:



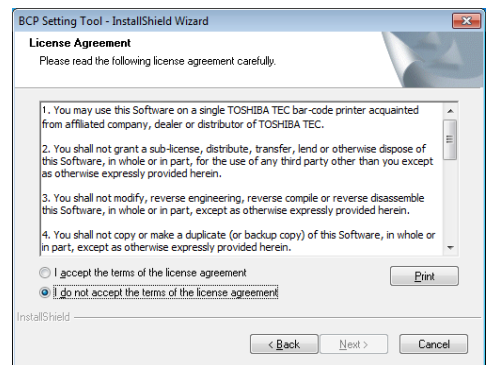
Click [Yes], and install NET Framework 4.5.2. About installing .NET Framework, refer to the following URL: <https://docs.microsoft.com/ja-jp/dotnet/framework>

- 📖 Download "BCPToolSetup.exe Web version" and install ".NET Framework4.5.2" via internet. If your PC is not connected to the internet, please use "BCPToolSetupFull.exe Standalone version".

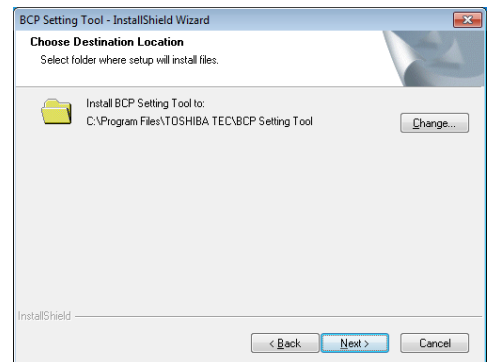
2. The InstallShield Wizard starts. Click [Next].




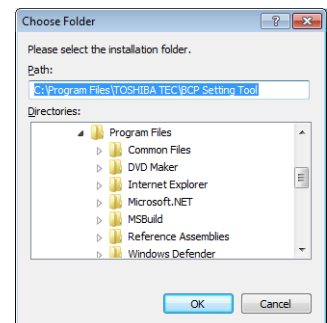
3. The [License Agreement] screen appears.
When you agree, click [I accept the terms of the license agreement] and click [Next].
→ 'Software License Agreement'



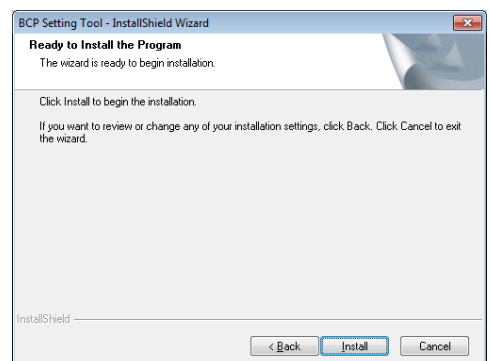
4. The [Choose Destination Location] screen appears.
Check the folder where this product is going to be installed,
and click [Next].



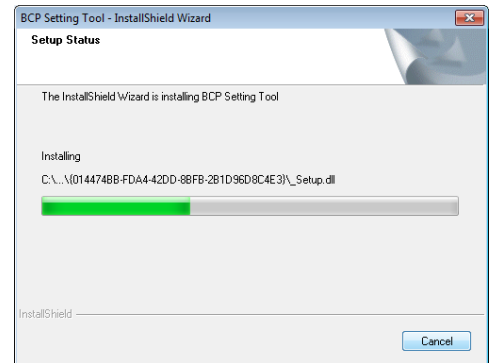
-  When you want to change the location, click [Browse...].
Select a desired folder on the [Choose Folder] screen.



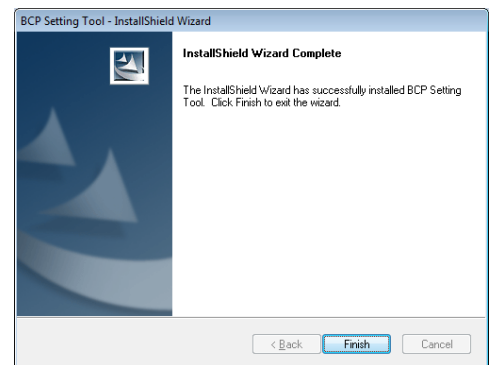
5. The [Ready to Install the Program] screen appears.
Click [Install] to start the installation.
When you want to change the setting, click [Back] until the applicable screen appears, then make the change.



6. The installation is being performed.
Click [Cancel] to stop the installation.



7. The [InstallShield Wizard Complete] screen appears when the installation is completed.
Click [Finish] to complete the operation.



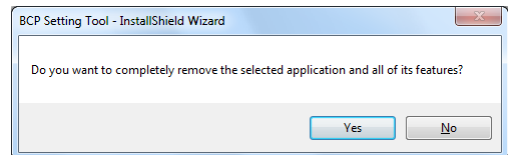
Uninstallation

1. Select [Start] - [Control Panel] - [Programs and Features].

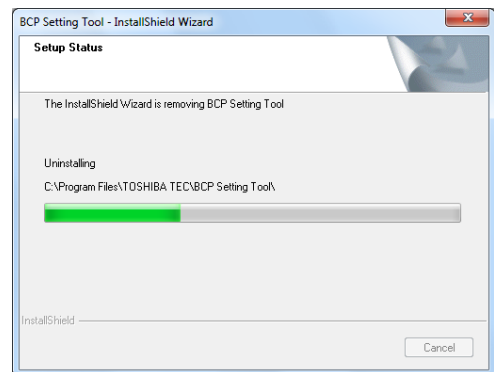
Note: With Windows 7/8, the User Account Control dialog box may appear. In that case, click [Allow] to continue.

2. Choose this product on the [Uninstall or change a program] screen, then click [Uninstall].

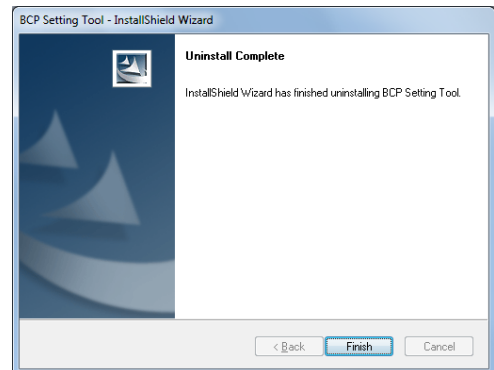
3. The dialog box appears to confirm the removal of this product.
Clicking [OK] starts uninstallation.



4. The screen which shows a progress bar appears.
Clicking [Cancel] stops the operation.



5. The [Uninstall Complete] screen appears when uninstallation is completed.
Click [Finish] to complete the operation.





13th Edition issued: February, 2022

Toshiba Tec Corporation

1-11-1, Osaki, Shinagawa-ku, Tokyo 141-8562
Gate City Ohsaki West Tower

© Toshiba Tec Corporation 2015-2022 All rights reserved.

BS22000500-EN