

# A new endoconidial black meristematic genus, *Atramixtia*, associated with declining white spruce and phylogenetically allied to a lineage of dothidealean conifer pathogens

A. Tsuneda, M.L. Davey, and R.S. Currah

**Abstract:** An endoconidial, black meristematic taxon *Atramixtia arboricola* gen. et. sp. nov. (Dothideales) from the black subicula found on twigs of declining white spruce, *Picea glauca* (Moench) Voss, in Alberta is described. It is morphologically distinguishable from other endoconidial taxa by the conidioma composed of clumps of endoconidial conidiogenous cells, scattered meristematically dividing cells, dematiaceous hyphae, abundant brown, granular matrix materials, and sometimes plant tissue. Endoconidia also occur in conidiogenous cellular clumps that are not organized into a conidioma but develop directly from stromatic cells on the bark. In culture, it forms similar endoconidial conidiomata and also a mycelial, blastic synanamorph that superficially resembles *Hormonema*. *Atramixtia arboricola* is a member of the Dothideales and shows phylogenetic affinities to a clade of conifer-stem and -needle pathogens, including *Sydowia* and *Delphinella*, although no teleomorph was found either on the natural substrate or in culture. It has not been determined whether *A. arboricola* is pathogenic to its host, but the occurrence of abundant intracellular hyphae in the host periderm suggests that the fungus is at least parasitic.

**Key words:** black yeasts, Dothideomycetes, fungal taxonomy, *Atramixtia*, *Hormonema*, *Sclerophoma*, *Sydowia*, *Delphinella*.

**Résumé :** Les auteurs décrivent un taxon méristématique noir endoconidien, l'*Atramixtia arboricola* gen. et sp. nov. (Dothideales) à partir de subiculums noirs venant sur rameaux en déclin d'épinette blanche, *Picea glauca* (Moench) Voss, en Alberta. On le distingue morphologiquement des autres taxons endoconidiens par les conidiomes composés de touffes de cellules conidiogènes endoconidiales, des cellules à divisions méristématiques éparées, des hyphes dématiés et une abondance de matériaux matriciels granulaires bruns avec, ou sans tissus végétaux. On retrouve également des endoconidies dans les touffes cellulaires conidiogènes, n'étant pas organisées en conidiomes mais se développant directement à partir de cellules stromatiques dans l'écorce. En culture, il forme des conidiomes endoconidiens semblables ainsi que des synamorphes blastiques mycéliens ressemblant superficiellement aux *Hormonema*. L'*Atramixtia arboricola* appartient aux Dothideales et montre des affinités phylogénétiques avec un clade pathogène des tiges et des aiguilles de conifères, incluant les *Sydowia* et les *Delphinella*, bien qu'on ne trouve pas de téléomorphe dans les substrats naturels ainsi qu'en culture. Les auteurs n'ont pas déterminé si l'*A. arboricola* est pathogène pour son hôte, mais la présence de nombreux hyphes intracellulaires dans le périderme de l'hôte suggère que ce champignon est au moins parasite.

**Mots-clés :** levure noire, Dothideomycètes, taxonomie fongique, *Atramixtia*, *Hormonema*, *Sclerophoma*, *Sydowia*, *Delphinella*.

[Traduit par la Rédaction]

## Introduction

Black meristematic fungi (BMFs) are a phylogenetically diverse, arbitrarily defined group of asexual fungi that are characterized by darkly pigmented, slowly expanding colo-

nies that increase in size through the more or less isodiametric enlargement and subdivision of cells, rather than through hyphal tip growth, during at least a part of their life cycle (de Hoog et al. 1999; Sterflinger et al. 1999; Tsuneda and Currah 2006). Many BMFs also show yeast-like growth and, therefore, may also be called black yeasts. Most tree-inhabiting BMFs found in Alberta form endoconidia (Sigler et al. 1981; Tsuneda and Currah 2006; Tsuneda et al. 2010), which are defined as endogenously produced asexual spores that have no wall layers in continuum with the conidiogenous cell (Hennebert and Sutton 1994). Endoconidial BMF genera are morphologically differentiated from each other primarily based on conidioma structure (Tsuneda and Currah 2006; Tsuneda et al. 2010). Phylogenetically, endoconidial BMFs are diverse and are distributed among at least five orders in the Ascomycota (sensu Hibbett et al. 2007): Capnodiales,

Received 15 October 2010. Accepted 28 February 2011.  
Published at www.nrcresearchpress.com/cjb on 31 May 2011.

**A. Tsuneda and R. Currah.** Department of Biological Sciences, University of Alberta, Edmonton, AB T6G 2E9, Canada.

**M. Davey.** Department of Ecology and Natural Resource Management, Norwegian University of Life Sciences, Box 5003, 1432, Ås, Norway; Microbial Evolution Research Group, Department of Biology, University of Oslo, P.O. Box 1066 Blindern, N-0316 Oslo, Norway.

Corresponding author: A. Tsuneda (e-mail: atsuneda@ualberta.ca).

**Figs. 1–7.** *Atramixtia arboricola* on a twig of *Picea glauca* (white spruce). Figs. 1, 2, and 7, scanning electron microscopy; Figs. 3–6, light microscopy (sectional views). Fig. 1. Subiculum on bark. Scale bar: 20  $\mu\text{m}$ . Fig. 2. Young conidiomata, more or less flask shaped in side view (arrows). Scale bar: 30  $\mu\text{m}$ . Fig. 3. Conidioma consisting of aggregated and scattered clumps of meristematic conidiogenous cells and abundant matrix materials with plant tissue (arrowhead). The arrow indicates a detached clump (probably during sectioning) containing endoconidia. Scale bar: 20  $\mu\text{m}$ . Fig. 4. Enlarged view of an internal portion of a conidioma showing hyphae and meristematic cells (arrowheads), embedded in granular matrix materials (asterisks). Scale bar: 10  $\mu\text{m}$ . Fig. 5. Conidiogenous cells containing endoconidia (arrowheads) developed directly from stromatic cells on bark. Scale bar: 15  $\mu\text{m}$ . Figs. 6 and 7. Host peridermal cells containing hyphal (arrowheads) and meristematic cells (arrows). Scale bars: Fig. 6, 30  $\mu\text{m}$ ; Fig. 7, 10  $\mu\text{m}$ .

**Figs. 8–16.** *Atramixtia arboricola* in culture. Figs. 8–10 and 13, malt extract agar; Figs. 11 and 12, cornmeal agar; Figs. 14 and 15, potato dextrose agar. Figs. 8 and 10–14, light microscopy; Figs. 9, 15, and 16, scanning electron microscopy. Figs. 8 and 9. Tubular structures (aggregated cellular clumps) (arrows), and submerged and aerial hyphae. Scale bars: Fig. 8, 0.8 mm; Fig. 9, 2 mm. Fig. 10. Early developmental stage of a tubular structure consisting of dematiaceous hyphae and numerous meristematically dividing cells (arrow). The arrowheads indicate arthroconidia-like fragments of hyphae. Scale bar: 50  $\mu\text{m}$ . Fig. 11. Unicellular, hyaline blastic conidia. Scale bar: 10  $\mu\text{m}$ . Fig. 12. Developing (left arrowhead) and near mature, darkly pigmented, two-celled blastic conidia (right arrowhead). Scale bar: 10  $\mu\text{m}$ . Fig. 13. Two-celled, blastic conidia. Those pointed by arrowheads are dislocated but still attached to the hypha. The one pointed by the arrow has become larger and darker after detaching from the conidiogenous cell. Scale bar: 10  $\mu\text{m}$ . Figs. 14 and 15. Aerially formed conidiomata (arrows). Scale bars: Fig. 14, 30  $\mu\text{m}$ ; Fig. 15, 50  $\mu\text{m}$ . Fig. 16. Aerially formed conidioma, artificially broken into halves, showing released endoconidia (arrows), scant hyphae, and clumps of conidiogenous cells. Scale bar: 20  $\mu\text{m}$ .

**Figs. 17–25.** Developmental stages of *Atramixtia arboricola* conidiomata on agar surface (malt extract agar). Figs. 17–21 and 24, scanning electron microscopy; Figs. 22 and 23, light microscopy (LM) (sectional views); and 25, differential interference contrast LM. Fig. 17. Hypha initiating meristematic growth (arrowhead) and aggregated cellular clumps (arrow). Scale bar: 30  $\mu\text{m}$ . Fig. 18. Early stage of conidioma formation. Scale bar: 50  $\mu\text{m}$ . Fig. 19. Cerebriform structure resulting from continuous aggregations of conidiomata. Scale bar: 100  $\mu\text{m}$ . Fig. 20. Transversely sectioned conidioma composed of aggregated cellular clumps (arrow) and matrix materials (asterisks), resembling the one formed on bark (Fig. 3). Scale bar: 50  $\mu\text{m}$ . Fig. 21. Enlarged view of a part of Fig. 20 showing a conidiogenous cell containing endoconidia (arrow). Scale bar: 15  $\mu\text{m}$ . Fig. 22. Endoconidia in a conidiogenous cell (arrow). Scale bar: 10  $\mu\text{m}$ . Fig. 23. Endoconidia (arrows) surrounded by conidiogenous cells in which endoconidiogenesis has not initiated. Scale bar: 10  $\mu\text{m}$ . Fig. 24. Numerous endoconidia being released from conidiogenous cells whose walls have degenerated but cell outlines are still identifiable (arrows). Released endoconidia often give rise to secondary conidia by budding (arrowheads). Scale bar: 50  $\mu\text{m}$ . Fig. 25. Released endoconidia. Scale bar: 10  $\mu\text{m}$ .

Chaetothyriales, Dothideales, Myriangiales, and Pleosporales (Hambleton et al. 2003; Tsuneda et al. 2004a; Tsuneda and Currah 2006; Crous et al. 2007; Tsuneda et al. 2008). Some endoconidial BMF species are pathogenic to plants (Tsuneda et al. 2001, 2008) or humans (Palencarova et al. 1995; de Hoog et al. 2000; Chabasse 2002).

In our 2007–2009 survey for tree-inhabiting BMFs in Larch Valley, Banff National Park, Alberta, we found that the bark of many trees of subalpine larch (*Larix lyallii* Parl) and white spruce (*Picea glauca* (Moench) Voss) had black subicula of BMFs. Most of these trees appeared weakened or dead, although it was uncertain whether the BMFs were the primary cause of their decline. Among the BMFs on larch, two endoconidial BMF genera were described previously as *Celosporium larixicolum* gen. et sp. nov. (Dothideales) and *Hispidoconidioma alpina* gen. et sp. nov. (Capnodiales) (Tsuneda et al. 2010). We report herein another endoconidial BMF genus, *Atramixtia arboricola* gen. et sp. nov. (Dothideales), from white spruce.

## Materials and methods

### Isolation and microscopy

Small twigs bearing black fungal subicula were cut from 20 randomly selected trees (two to three twigs from each tree) of *P. glauca* in the Larch Valley and were examined by light microscopy and scanning electron microscopy (LM and SEM, respectively). The fungus was isolated using the method described in Tsuneda et al. (2000), and cultures were deposited at the University of Alberta Microfungus Collection and Herbarium (UAMH 11212 and 11213). Colony and

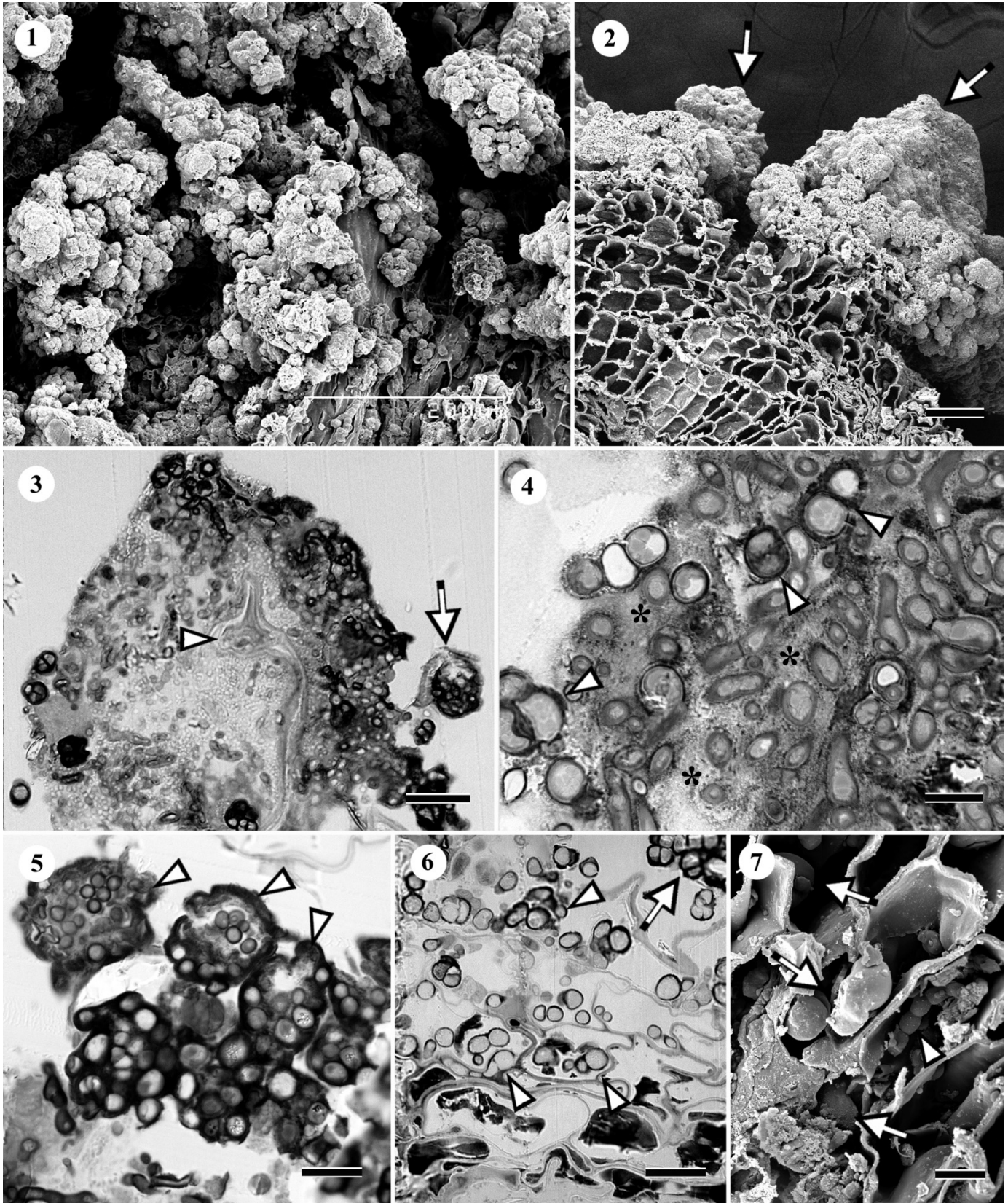
microscopic descriptions were made using subcultures grown on 2% malt extract agar (MEA; Difco Laboratories, Detroit, Michigan), potato dextrose agar (PDA, Difco Laboratories), or cornmeal agar (CMA, Difco Laboratories) at 20 °C in the dark. Specimens for thin-section observations by LM were prepared according to Meek (1976) and those for SEM (20 bark specimens; a piece of a twig, ca. 5 mm  $\times$  5 mm) were prepared according to Tsuneda et al. (2000). SEM specimens were examined and photographed using a Hitachi S-510 electron microscope at 5, 10, or 15 kV (Hitachi, Tokyo, Japan).

### DNA sequencing and phylogenetic analysis

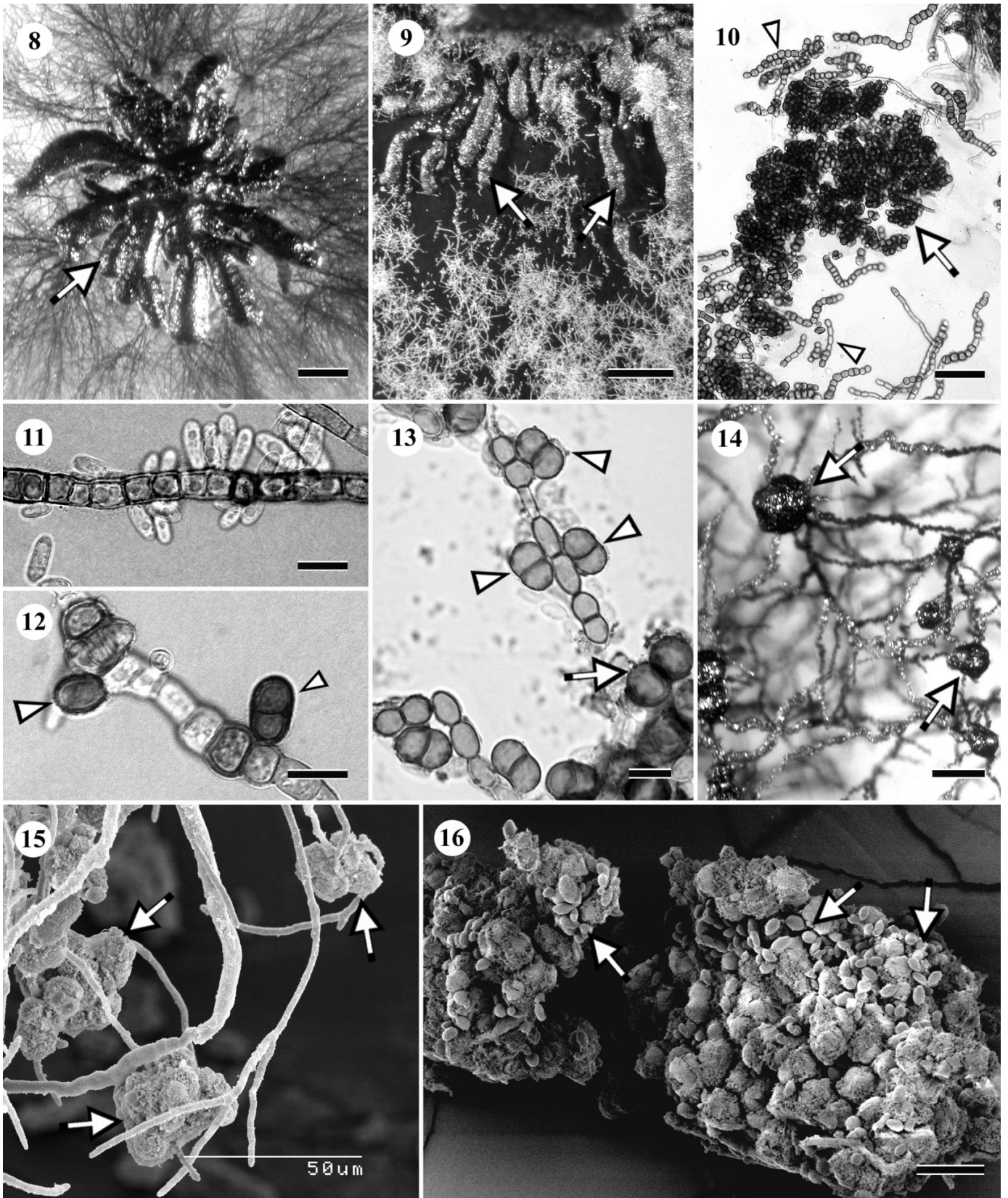
The ex-type strain of the fungus (UAMH 11211) was grown on PDA for 30 d at ambient light and temperature, and genomic DNA was extracted from the mycelium using a cetyltrimethylammonium bromide – chloroform extraction protocol (Murray and Thompson 1980; Gardes and Bruns 1993). The large subunit (LSU) and internal transcribed spacer (ITS) regions of the genomic rRNA gene complex were amplified as described in Davey and Currah (2007) using the forward and reverse primer sets LROR and LR7 (Vilgalys and Hester 1990), and ITS4 and ITS5 (White et al. 1990), respectively. Amplicons were sequenced with an ABI 3100 automated sequencer (Applied Biosystems Inc., Foster City, California), the primers ITS4 and ITS5 (White et al. 1990), and LROR, LR1, LR3R, LR5, and LR7 (Vilgalys and Hester 1990).

Data matrices were assembled from LSU and ITS sequences of *A. arboricola* and other members of the Dothideales, as well as outgroup taxa from the Myriangiales, and aligned using MAFFT version 6.717 (Kato and Toh 2008), and the

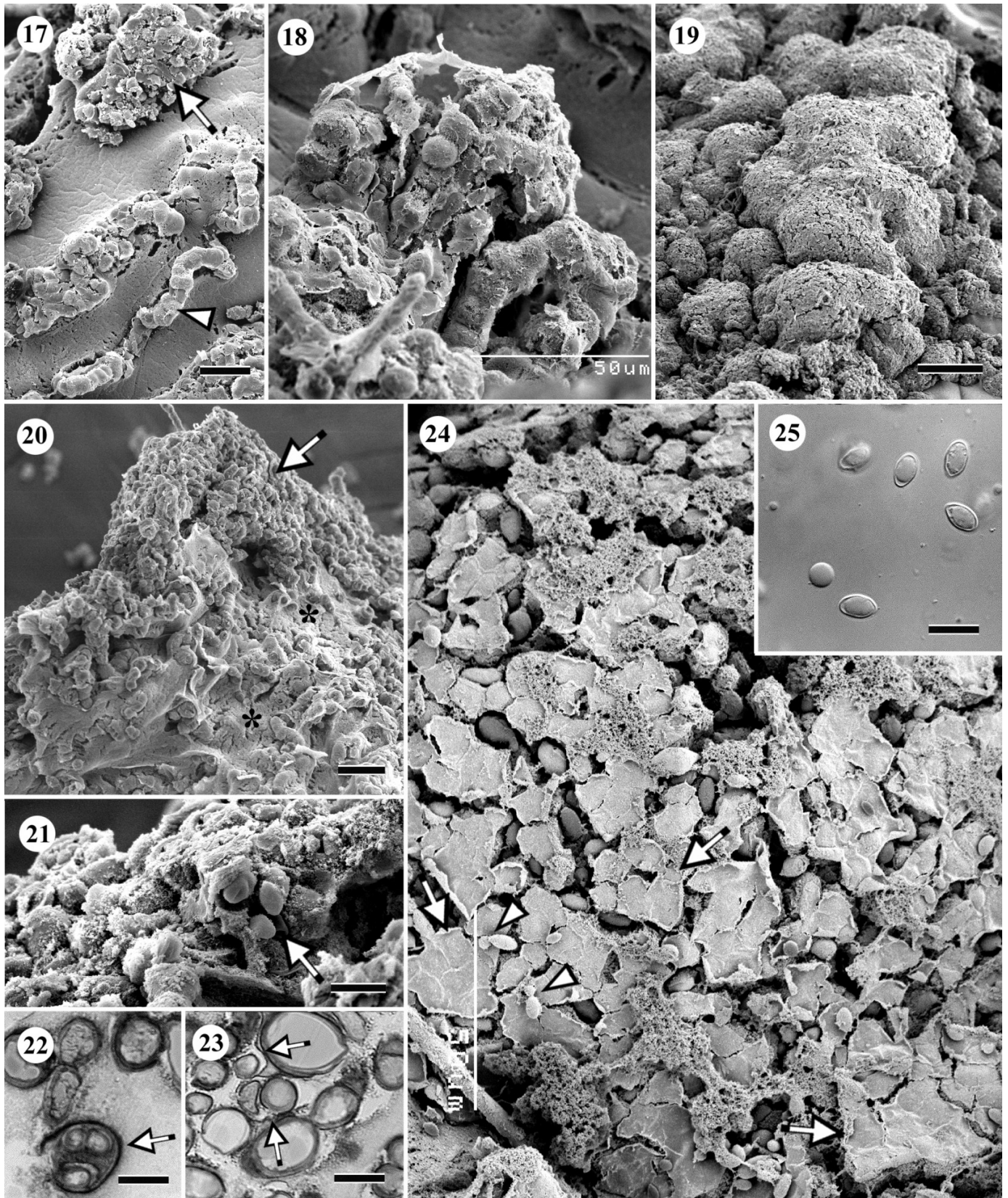












Botany Downloaded from www.nrcresearchpress.com by University of Alberta on 06/02/11  
For personal use only.



subsequent alignments were manually verified. Gblocks v. 0.91b (Castresana 2000) was used to remove ambiguously aligned bases from the ITS alignment, and the resulting LSU and ITS matrices were subjected to maximum parsimony, maximum likelihood, and Bayesian analyses. Maximum parsimony analyses were conducted using PAUP v4.0d106 (Swofford 2003) with Fitch parsimony, random simple step-wise addition of taxa, and tree bisection-reconnection (TBR) branch swapping, and gaps were treated as missing data. Support for branching topologies was evaluated using 1000 resamplings of the data by bootstrapping analysis using the same criterion described above (Felsenstein 1985). All trees were scored for length in steps, consistency index (CI), retention index (RI), and homoplasy index (HI). The Bayesian information criterion in jModelTest v0.1.1 (Guindon and Gascuel 2003; Posada 2008) was used to determine the best-fit model of evolution for both maximum likelihood and Bayesian analyses. Maximum likelihood analyses to determine the most likely tree and maximum likelihood bootstrap support for each dataset were conducted using GARLI v. 1.0 (Zwickl 2006) with the selected models of evolution implemented. Bayesian analyses were conducted using MrBayes version 3.1 (Ronquist and Huelsenbeck 2003) with two independent runs of four Markov-chain Monte Carlo chains with  $1.0 \times 10^7$  generations each, sampling trees every 1000th generation. A final standard deviation of  $<0.01$  for the split frequency was taken as an indication that convergence had been achieved. The first 10% of sampled trees were discarded as burn-in and posterior probabilities for each node of the 50% majority rule consensus tree were recorded.

## Results

### Taxonomy

*Atramixtia* Tsuneda, Davey & Currah, gen. nov.

TYPUS GENERIS: *Atramixtia arboricola*

ETYMOLOGY: *Atramixtia* — “dark mixture” in reference to the conidioma that contains cellular, hyphal, and sometimes plant elements. *Arboricola* — tree inhabitant.

*Conidiomata constans ex cellulis conidiogenesis sparsis, aggregatis, fasciculis, nigellis, hyphis dematiaceis et materiis matricibus brunneis, granulatis cum vel sine materia planta. Endoconidia unicellularis, hyalina, ovaes ad obverse-ovata, et dissolutione tunicae cellulae conidiogenosae exsoluta.*

Conidiomata consisting of darkly pigmented, aggregated, and scattered clumps of conidiogenous cells, dematiaceous hyphae, and brown, granular matrix materials with or without plant tissue. Endoconidia unicellular, hyaline, oval to obovate, and released by cell-wall dissolution of the conidiogenous cells.

*Atramixtia arboricola* Tsuneda, Davey & Currah sp. nov.

Figs. 1–25.

*Subicula in ramis Picea glauca, nigra, magnitudine varia, constans ex conidiomatibus aggregatis. Conidiomata nigra, superficiales, semiorbiculata, demum confluentibus et irregularibus, et ex globis cellulis aggregatis et hyphis dematiaceis. Cellulae conidiogenosae ovaes vel ovoidea, brunnea. Endoconidia unicellularis, hyalina, ovaes ad obverse-ovata. Coloniae in MEA subglobosae constans ex hyphis memnoniis*

*submersis et hyphis spadiceis aeriis. Conidia in CMA formantia blastice, ex lateribus hypharum dematiacearum, e 1–2 cellulis: hyphae unicellularis hyalinae, fusiformes ad ellipsoidei; hyphae bicellularis spadiceae, ovaes cum septis constrictis.*

ON TWIGS OF *PICEA GLAUCA*: subicula black, irregular in shape, consisting of aggregated conidiomata. Conidiomata black, superficial, separate when young, hemispherical (often flask shaped in side view), becoming confluent and irregular in shape, composed of aggregated cellular clumps, scattered meristematically dividing cells, scant dematiaceous hyphae, and brown granular matrix materials with or without plant tissue. Cellular clumps prior to merging with adjacent ones, subglobose, dark brown,  $20\text{--}34 \mu\text{m} \times 18\text{--}30 \mu\text{m}$ . Conidiogenous cells, oval or ovoid, dark brown,  $6\text{--}10.5 \mu\text{m} \times 5\text{--}7 \mu\text{m}$ . Endoconidia unicellular, hyaline, subglobose, oval, or obovate,  $3.5\text{--}7.5 \mu\text{m} \times 3\text{--}4 \mu\text{m}$ .

ON MEA: vegetative hyphae light to dark brown, straight or moniliform, with markedly swollen cells at irregular intervals,  $7\text{--}22 \mu\text{m}$  in diameter. Colonies subspherical, consisting of brownish black submerged and light brown aerial hyphae, and elevated tubular structures composed of cellular clumps of thick-walled meristematically dividing cells, scant dematiaceous hyphae, and brown granular matrix materials. Endoconidia forming in cellular clumps in discontinuous areas of tubular structures, hyaline, subglobose, oval, ovoid, or ellipsoid,  $3\text{--}9.5 \mu\text{m} \times 3\text{--}6 \mu\text{m}$ .

ON CMA: blastic conidia abundant, either unicellular (hyaline,  $6\text{--}10.5 \mu\text{m} \times 2.5\text{--}4 \mu\text{m}$ , fusiform to ellipsoidal) or two celled (light brown,  $10.4\text{--}13.8 \mu\text{m} \times 2.7\text{--}8.8 \mu\text{m}$ , mostly oval with a slight constriction at the septum), arising from sides of dematiaceous hyphae.

HOLOTYPE: Dried culture prepared from an isolate (UAMH 11211) obtained from a black subiculum formed on a twig of *Picea glauca* collected at the Larch Valley (collection permit, LL-2008-1753;  $51^\circ 19' \text{N}$ ,  $116^\circ 12' \text{W}$ ), 5 August 2008 by A. Tsuneda.

### Microscopic observations

At least three different BMFs were isolated from black subicula on the bark specimens of white spruce, and *A. arboricola* was the most frequent. Examination of longitudinal sections of subicula was essential to confirm the presence of *A. arboricola* on the natural substrate, because black subicula of BMFs superficially looked very similar under both dissecting LM and SEM (Fig. 1). Conidiomata of *A. arboricola* were superficial and when young, they often appeared more or less flask shaped in side view (Fig. 2), but this distinguishing characteristic became obscured when adjacent ones merged in older subicula. Thin-section observations revealed that conidiomata were composed of clumps of thick-walled, meristematically dividing, darkly pigmented cells (cellular clumps); dematiaceous hyphae; and brown, granular matrix materials (Figs. 3 and 4) with or without host tissue (Fig. 3, arrowhead). The cellular clumps in a conidioma were either densely aggregated, particularly in the surface areas, or scattered and embedded in the matrix materials (Figs. 3 and 4). Endoconidiogenesis was not synchronous and often occurred only in some cellular clumps of the conidioma. Endoconidia sometimes occurred in cellular clumps that were not organized into a conidioma but developed directly from stromatic

cells on the bark (Fig. 5). Host peridermal cells underneath the conidiomata or stromatic cells contained abundant meristematically dividing cells and hyphae of *A. arboricola* (Figs. 6 and 7).

Two isolates of *A. arboricola*, UAMH 11211 and 11212, were examined in culture. They were similar in morphology but both varied in colony morphology, growth rate, and conidiogenesis depending on the agar medium. On MEA, colonies were ca. 12.5 mm in diameter after 15 d and composed of (i) submerged brown hyphae, (ii) light brown, cottony, aerial hyphae, and (iii) black, elevated, and often tubular structures consisting of meristematically dividing cells, brown granular matrix materials, and scant thick-walled hyphae (Figs. 8–10, 19, and 20). Blastic conidia were absent or scarce but one to several-celled, arthroconidium-like hyphal fragments were often present (Fig. 10, arrowheads). On PDA, colonies were about 7.8 mm in diameter after 15 d and initially resembled those of white yeasts owing to abundant, hyaline blastic conidia, but later became black and cerebriform. Mature colonies on PDA were too dense to observe blastic conidiogenesis. Colonies on CMA were approximately 14.7 mm in diameter after 15 d and consisted of sparse, light brown hyphae bearing blastic conidia that were either one or two celled; the former were hyaline and fusiform to ellipsoid (Fig. 11), while the latter were light brown and mostly oval with a slight constriction at the septum (Figs. 12 and 13). After secession, the two-celled conidia enlarged (Fig. 13, arrow), became darker, and often merged with adjacent ones to form multicellular bodies. Both one- and two-celled blastic conidia frequently gave rise to secondary conidia. No annelides or phialides were found.

Conidiomata developed on MEA and PDA, but not on CMA, and formed among the aerial mycelium or on the agar surface. Aerial conidiomata (Figs. 14 and 15) were shiny black, subglobose to irregular in shape, and developed from hyphal cells that underwent meristematic growth. When mature, they contained liberated endoconidia, scant hyphae, and conidiogenous cellular clumps (Fig. 16). Conidiomata forming in contact with agar surface were black, raised, tubular or cerebriform (Figs. 8, 9, and 17–19), and morphologically similar to the flask-shaped conidiomata on the natural substrate (Figs. 2–4); hyphae first underwent meristematic growth to form cellular clumps that subsequently merged with adjacent ones (Figs. 17 and 18) while producing granular matrix materials. Black, elevated, subglobose conidiomata thus formed further merged and developed into tubular or cerebriform structures (Figs. 19 and 20, sectional view). Endoconidiogenesis was evident after prolonged incubation (3–5 months at 20–22 °C), although the formation was irregular, i.e., endoconidia were largely absent and occurred only in some cellular clumps (Figs. 21–23) or were abundant in some discontinuous areas of the tubular or cerebriform structure (Fig. 24). Endoconidia were released by the degeneration of conidiogenous cell walls (Figs. 24 and 25). The released endoconidia often gave rise to secondary conidia by budding (Fig. 24, arrowheads).

### Phylogenetic analyses

The aligned matrix of LSU sequences included 1324 characters, of which 10 120 were constant, 46 were parsimony uninformative, and 158 were parsimony informative. Maxi-

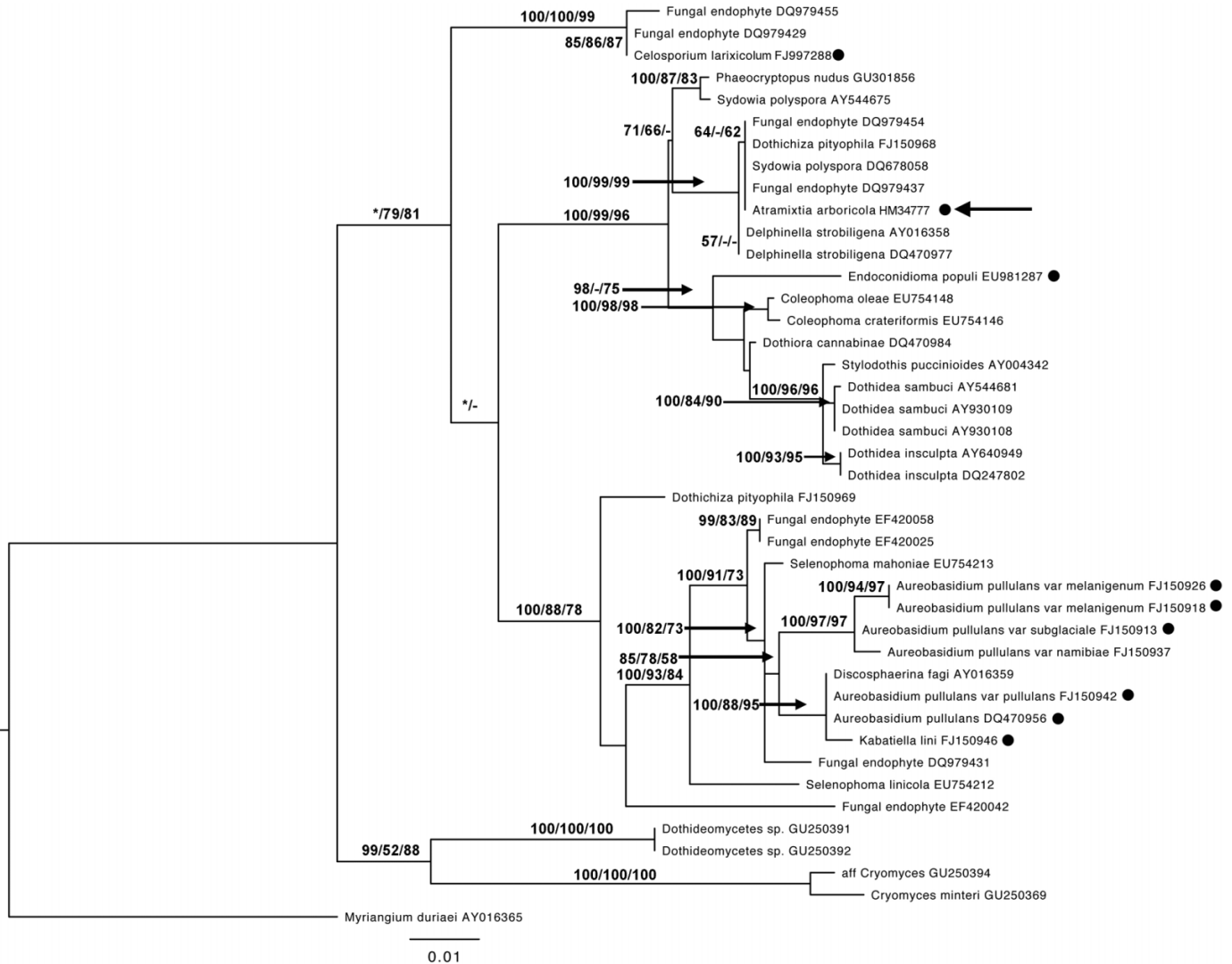
mum parsimony analysis generated 8292 most parsimonious trees of 442 steps (CI = 0.638, RI = 0.862, and HI = 0.362). The TIM1+I+G model was selected by jModelTest as the best-fit model of evolution for the data and was implemented in both maximum likelihood and Bayesian inference analyses. Results of the maximum parsimony and maximum likelihood bootstrap analyses and the Bayesian inference are shown on the maximum likelihood tree ( $-\ln L$  4195.48) (Fig. 26). *Atramixtia arboricola*, isolates of *Sydowia polyspora* (Bref. & Tavel) E. Müll. and its anamorph *Dothichiza pityophila* (Corda) Petr., and two endophytes of *Picea mariana* (Müll.) Britton et al. needles form an unresolved subgroup (64% Bayesian posterior probability (BPP) and 62% maximum likelihood bootstrap proportion (MBP)) within a strongly supported clade (100% BPP, 99% parsimony bootstrap proportion (PBP), and 99% MBP) that also includes isolates of the conifer needle pathogen *Delphinella strobiligena* (Desm.) Sacc. ex. E. Müll. & Arx. This clade is well resolved and excludes other Dothidealean taxa known to produce endoconidia (i.e., *Celosporium larixicolum* Tsuneda & Davey, *Endoconidioma populi* Tsuneda et al., and *Aureobasidium* species).

The aligned matrix of ITS sequences included 494 characters, of which 282 were constant, 79 were parsimony uninformative, and 133 were parsimony informative. The 288 most parsimonious trees of 476 steps (CI = 0.641, RI = 0.888, and HI = 0.359) were generated by maximum parsimony analysis. The TIM2ef+G model was selected by jModelTest as the best-fit model of evolution for the data and was implemented in both maximum likelihood and Bayesian inference analyses. Results of the maximum parsimony and maximum likelihood bootstrap analyses and the Bayesian inference are shown on the maximum likelihood tree ( $-\ln L$  2973.52) (Fig. 27). *Atramixtia arboricola* is nested within a large, strongly supported clade (100 BPP, 99% MBP, and 99% MBP) that includes representatives of *Sydowia polyspora* and its hyphomycetous anamorph, *Hormonema dematioides* Lagerb. & Melin, and representatives of the conifer needle pathogens *Delphinella abietis* (Rostr.) E. Müll. and *Rhizosphaera kalkhoffii* Bubák. Pairwise sequence similarity among members of this clade is >98%. The clade containing *A. arboricola* is well resolved from those clades containing other dothidealean taxa known to produce endoconidia.

### Discussion

Morphologically, *A. arboricola* is unique in its conidiomata structure that consists of a mixture of conidiogenous cellular clumps, dematiaceous hyphae, and abundant brown, granular matrix materials. This conidiomatal structure distinguishes the species from other previously reported endoconidial BMFs that form conidiomata, viz., *Phaeotheca* (Sigler et al. 1981; Tsuneda et al. 2004b), *Scleroconidioma* (Tsuneda et al. 2000), *Endoconidioma* (Tsuneda et al. 2004a, b), *Endosporium* (Tsuneda et al. 2008), *Celosporium* (Tsuneda et al. 2010), and *Hispidoconidioma* (Tsuneda et al. 2010). This morphological distinction from other dothidealean endoconidial taxa is further supported by our phylogenetic analysis of the LSU rDNA region, which places *A. arboricola* in a well-resolved clade that is distinct from other lineages that include endoconidial taxa (*Scleroconidioma* and *Endoconidioma*)

**Fig. 26.** Maximum likelihood tree ( $-\ln L$  4195.48) inferred from a maximum likelihood analysis of large subunit rDNA sequences showing the placement of *Atramixtia arboricola* and other endoconidial taxa among the Dothideales. Support values are given above the branches as Bayesian posterior probability / parsimony bootstrap proportion / maximum likelihood bootstrap proportion. Gaps (-) indicate a collapsed node and asterisks (\*) indicate a node was resolved differently in the analysis. *Myriangium duriaei* serves as the outgroup taxon. Accession numbers for sequences retrieved from or deposited in GenBank are indicated following the taxon name, and source information can be found in Table 1. *Atramixtia arboricola* is indicated by an arrow. Taxa producing endoconidia are indicated by a solid circle (●) following the name.



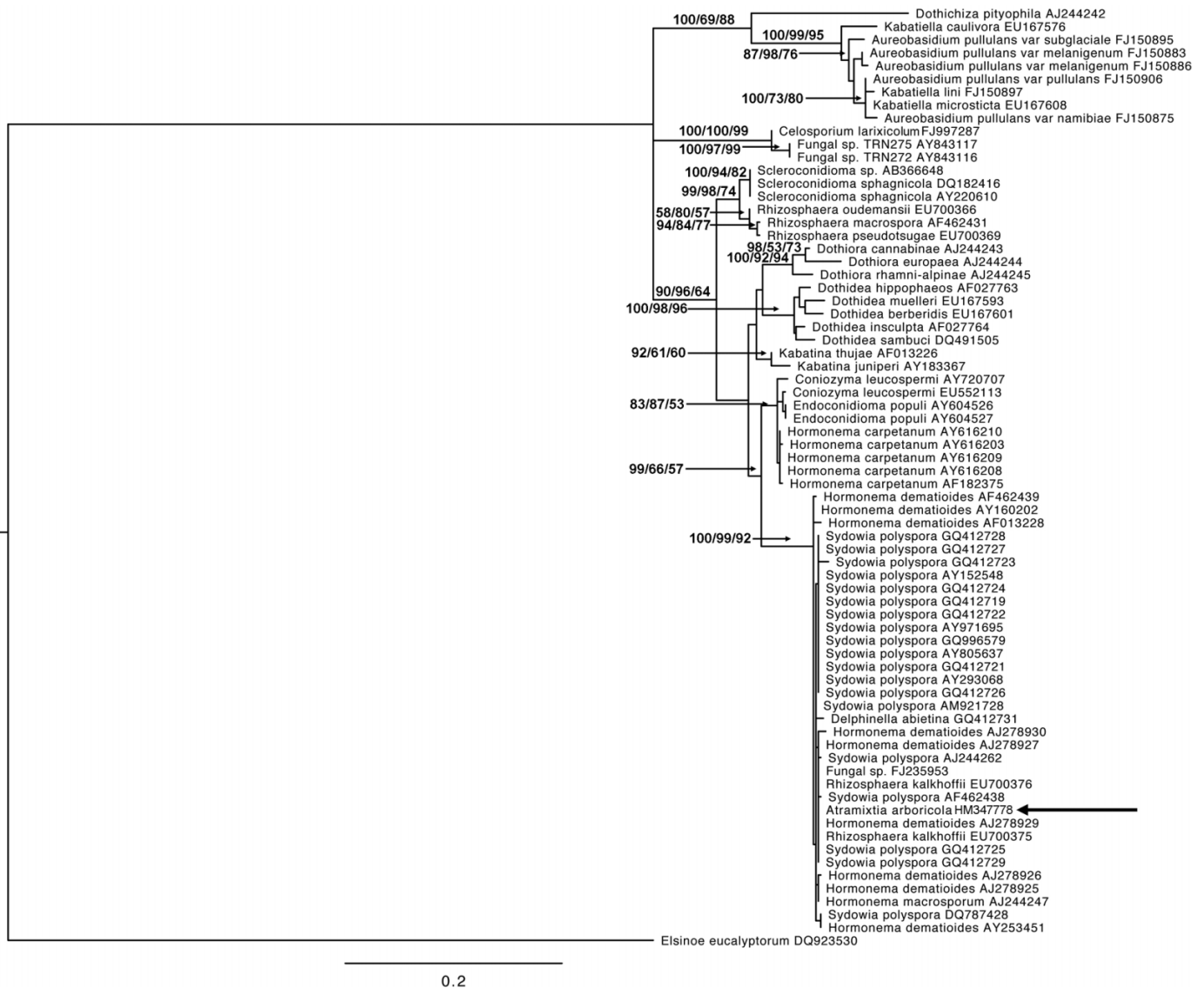
(Fig. 26), as well as some taxa reported to occasionally form endoconidia (*Aureobasidium* and *Kabatiella*).

Phylogenetically, *A. arboricola* is closely allied to a group of dothidealean conifer-stem and -needle pathogens, including *Delphinella abietis*, *Rhizosphaera kalkhoffii*, and *Sydowia polyspora* and its anamorphs *Hormonema dematioides* and *Sclerophoma pythiophila* (Cda) Höhn (= *Dothichiza pythiophila*). While these taxa form a well-supported clade within the Dothideales in analyses of both the LSU and ITS regions, relationships between members of the clade are poorly resolved, even in ITS analyses. Although the ITS region is used as a barcode for distinguishing fungal species, it is widely recognized that the region lacks a barcode gap for some species complexes, and it is not useful for distinguishing between members of these complexes (Chase and Fay 2009; Seifert 2009; Eberhardt 2010). Further phylogenetic analyses using other gene regions (i.e.,  $\beta$ -tubulin and actin)

and multigene analyses are needed to elucidate the relationship between *A. arboricola* and other members of this group of conifer-stem and -needle pathogens. Although our phylogenetic analyses do not demonstrate unequivocally that *A. arboricola* represents a distinct evolutionary lineage within the Dothideales, we feel *A. arboricola* cannot be adequately taxonomically accommodated within the existing anamorph genera represented in the conifer pathogen clade. *Atramixtia arboricola* produces distinct coelomycetous conidiomata that are inconsistent with the pycnidial taxa *Rhizosphaera kalkhoffii*, *Sclerophoma pythiophila* (teleomorph = *Sydowia polyspora*), and *Dothiorella* sp. (teleomorph = *Delphinella abietis*) (Butin 1964; Sutton and Waterston 1970; Barr 1972; Sutton 1980), as the species undergoes endoconidiogenesis rather than blastic conidiogenesis. *Hormonema dematioides*, a cultural, mycelial anamorph of *S. polyspora*, forms blastic conidia of similar shape and size to those of *A. arboricola*



**Fig. 27.** Maximum likelihood tree ( $-\ln L$  2973,52) inferred from a maximum likelihood analysis of internal transcribed spacer rDNA sequences showing the placement of *Atramixtia arboricola* and other endoconidial taxa among the Dothideales. Support values are given above the branches as Bayesian posterior probability / parsimony bootstrap proportion / maximum likelihood bootstrap proportion. *Elsinoë eucalyptorum* serves as the outgroup taxon. Accession numbers for sequences retrieved from or deposited in GenBank are indicated following the taxon name, and source information can be found in Table 1. *Atramixtia arboricola* is indicated by an arrow.



and also occasionally forms endoconidia within intercalary cells of its hyphae (Hermanides-Nijhof 1977; Sutton 1980; Yurlova et al. 1999). The blastic synanamorph of *A. arboricola*, however, lacks both annellated conidiogenous cells and endoconidia formed within its hyphae. Because *A. arboricola* is distinguishable from other closely related taxa, and its morphological characters are stable both in culture and on natural substrates (including where one would expect to find other members of the conifer pathogen clade), we feel it is unlikely that *A. arboricola* represents an example of phenotypic plasticity within currently existing taxa and that the erection of a new genus is warranted.

The description of *A. arboricola* within this clade of conifer pathogens represents an additional morphological form within the lineage, making it a diverse group that includes pseudothecial teleomorph taxa with septate spores and ana-

morphic taxa that are pycnidial, annellidic, endoconidial, or forming occasional endoconidia within intercalary cells of the hyphae. However, without additional taxon sampling of this lineage and further phylogenetic analysis, it is unclear whether this morphological diversity is reflective of divergence among species to occupy different microniches on the host or is reflective of a lineage composed of species with complex life histories and multiple life stages. *Atramixtia* shares 98%–100% pairwise sequence similarity across the ITS region of rDNA with other members of the conifer pathogen clade it clusters in, including the teleomorph genera *Sydowia* and *Delphinella*. Given that *S. polyspora* shares 97%–100% pairwise sequence similarity across this region with its synanamorphs and is known to have a high degree of intraspecific genetic variability (Bills et al. 2004; Kraj 2009; Kraj et al. 2009), we can speculate that *A. arboricola*

**Table 1.** Sources and accession numbers of the isolates and sequences used in this study.

| Taxon  | Source <sup>a</sup> | Substrate                            | Locality                  | Large subunit      | Internal transcribed spacer | References   |
|--|---------------------|--------------------------------------|---------------------------|--------------------|-----------------------------|--|
| <i>Atramixtia arboricola</i>                           | UAMH 11211          | <i>Picea glauca</i>                  | Alberta, Canada           | HM347777           | HM347778                    | This study   |
| <i>Aureobasidium pullulans</i> var. <i>namibiae</i>    | CBS 147.97          | Dolomitic marble                     | Namibia                   | FJ150937           | FJ150875                    | Zalar et al. 2008  |
| <i>Aureobasidium pullulans</i> var. <i>melanigenum</i> | CBS 105.22          | Not Known                            | Not known                 | FJ150926           | FJ150886                    | Zalar et al. 2008  |
| <i>Aureobasidium pullulans</i> var. <i>pullulans</i>   | Not known           | Ponds on sea ice                     | Svalbard, Norway          | FJ150918           | FJ150883                    | Zalar et al. 2008  |
|  | CBS 584.75          | <i>Vitis vinifera</i>                | Beaujolais, France        | FJ150942           | FJ150906                    | Zalar et al. 2008; Spatafora et al. 2006                     |
| <i>Aureobasidium pullulans</i> var. <i>subglaciale</i> | Not known           | Subglacial ice from seawater         | Svalbard, Norway          | DQ470956           | FJ150895                    | Zalar et al. 2008  |
|  |                     |                                      |                           | FJ150913           |                             |  |
| <i>Celosporium larixicolum</i>                         | UAMH 11008          | <i>Larix laricina</i>                | Alberta, Canada           | FJ997288           | FJ997287                    | Tsuneda et al. 2010  |
| <i>Coleophoma crateriformis</i>                        | CBS 473.69          | <i>Phillyrea angustifolia</i>        | Spain                     | EU754146           | —                           | de Gruyter et al. 2009                                       |
| <i>Coleophoma oleae</i>                                | CBS 615.72          | <i>Olea europaea</i>                 | Greece                    | EU754148           | —                           | de Gruyter et al. 2009                                       |
| <i>Contozyma leucospermi</i>                           | CBS 114035          | <i>Protea repens</i>                 | South Africa              | —                  | AY720707                    | Lennox et al. 2004   |
|  | CBS 11289           | <i>Leucospermum conocarpodendron</i> | South Africa              | —                  | EU552113                    | Marincowitz et al. 2008                                      |
| <i>Cryomyces minteri</i>                               | Not known           | Rock                                 | Antarctica                | GU250369           | —                           | Selbmann et al. 2005   |
| <i>Delphinella abietis</i>                             | Not known           | <i>Abies</i> sp.                     | Norway                    | —                  | GQ412731                    | Lumbsch and Lindemuth 2001; Spatafora et al. 2006            |
| <i>Delphinella strobiligena</i>                        | CBS 735.71          | <i>Pinus halepensis</i>              | Greece                    | AY016358, DQ470977 | —                           |  |
| <i>Discosphaerina fagi</i>                             | CBS 171.93          | <i>Populus</i> sp.                   | UK                        | AY016359           | —                           | Lumbsch and Lindemuth 2001                                   |
| <i>Dothichiza pityophila</i>                           | CBS 215.50          | <i>Abies concolor</i>                | Norway                    | FJ150968           | AJ244242                    | Zalar et al. 2008; de Hoog et al. 1999                       |
| <i>Dothidea berberidis</i>                             | CBS 186.58          | <i>Berberis vulgaris</i>             | Switzerland               | —                  | EU167601                    | Simon et al. 2009  |
| <i>Dothidea hippophaës</i>                             | DAOM 231303         | Not known                            | Not known                 | —                  | AF027763                    | Jacobs and Rehner 1998                                       |
| <i>Dothidea insculpta</i>                              | CBS 189.58          | <i>Clematis vitalba</i>              | France                    | DQ247802, AY640949 | AF027764                    | Schoch et al. 2006; Reeb et al. 2004; Jacobs and Rehner 1998 |
| <i>Dothidea muelleri</i>                               | CBS 191.58          | <i>Daphne striata</i>                | Albulapass, Switzerland   | —                  | EU167593                    | Simon et al. 2009  |
| <i>Dothidea sambuci</i>                                | CBS 198.58          | <i>Acer pseudoplatanus</i>           | Switzerland               | AY930109           | DQ491505                    | Shoemaker and Hambleton 2005; Jeewon et al. 2002             |
|  | CBS 197.58          | <i>Sambucus nigra</i>                | Switzerland               | AY930108           | —                           | Shoemaker and Hambleton 2005                                 |
|  | DAOM 231303         | Not Known                            | Not known                 | AY544681           | —                           | Unpublished  |
|  | Not known           | Rock                                 | Alps                      | GU250391           | —                           | Selbmann et al. 2005   |
| Dothideomycetes sp.                                    | Not known           | Rock                                 | Alps                      | GU250392           | —                           | Selbmann et al. 2005   |
|  |                     |                                      |                           | GU250391           |                             |  |
| <i>Dothiora cannabinae</i>                             | CBS 737.71          | <i>Daphne cannabina</i>              | India                     | DQ470984           | AJ244243                    | Spatafora et al. 2006; de Hoog et al. 1999                   |
| <i>Dothiora europaea</i>                               | CBS 739.71          | <i>Salix helvetica</i>               | Switzerland               | —                  | AJ244244                    | de Hoog et al. 1999  |
| <i>Dothiora rhamni-alpinae</i>                         | CBS 745.71          | <i>Rhamnus alpina</i>                | Italy                     | —                  | AJ244245                    | de Hoog et al. 1999  |
| <i>Elsinoë eucalyptorum</i>                            | CBS 120084          | <i>Eucalyptus propinqua</i>          | Australia                 | —                  | DQ923530                    | Summerell et al. 2006  |
| <i>Endoconidioma populi</i>                            | UAMH 10297          | <i>Populus tremuloides</i>           | Edmonton, Alberta, Canada | EU981287           | AY604526                    | Tsuneda et al. 2004a   |
|  | UAMH 10298          | <i>Populus tremuloides</i>           | Edmonton, Alberta, Canada | —                  | AY604527                    | Tsuneda et al. 2004a   |
| Fungal endophyte                                       | Not known           | <i>Picea mariana</i>                 | Quebec, Canada            | DQ979455           | —                           | Higgins et al. 2007  |
|  |                     | <i>Platykladus orientalis</i>        | Not known                 | EF420058           | —                           | Hoffman and Arnold 2008                                      |
|  |                     | <i>Platykladus orientalis</i>        | Not known                 | EF420025           | —                           | Hoffman and Arnold 2008                                      |
|  |                     | <i>Platykladus orientalis</i>        | Not known                 | EF420042           | —                           | Hoffman and Arnold 2008                                      |
|  |                     | <i>Picea mariana</i>                 | Quebec, Canada            | DQ979429           | —                           | Higgins et al. 2007  |
|  |                     | <i>Picea mariana</i>                 | Quebec, Canada            | DQ979437           | —                           | Higgins et al. 2007  |
|  |                     | <i>Picea mariana</i>                 | Quebec, Canada            | DQ979454           | —                           | Higgins et al. 2007  |
| Fungal sp.   | Not known           | Wood                                 | Antarctica                | —                  | FJ235953                    | Arenz and Blanchette 2009                                    |
|  |                     | Slate                                | Atazar, Spain             | —                  | AY843116                    | Ruibal et al. 2008   |
|  |                     | Slate                                | Atazar, Spain             | —                  | AY843117                    | Ruibal et al. 2008   |
| <i>Hormonema carpetanum</i>                            | Not known           | <i>Juniperus communis</i>            | Avila, Spain              | —                  | Ay616210                    | Bills et al. 2004  |
|  |                     | <i>Juniperus communis</i>            | Madrid, Spain             | —                  | AY616209                    | Bills et al. 2004  |



Table 1 (concluded).

| Taxon                              | Source <sup>a</sup>          | Substrate                    | Locality                     | Large subunit          | Internal transcribed spacer | References                  |
|------------------------------------|------------------------------|------------------------------|------------------------------|------------------------|-----------------------------|-----------------------------|
| <i>Hormonema dematioides</i>       | Not known                    | <i>Juniperus sabina</i>      | Albacete, Spain              | —                      | AY616208                    | Bills et al. 2004           |
|                                    | Not known                    | <i>Juniperus communis</i>    | Avila, Spain                 | —                      | AY616203                    | Bills et al. 2004           |
|                                    | ATCC 74360                   | <i>Juniperus communis</i>    | Madrid, Spain                | —                      | AF182375                    | Bills et al. 2004           |
|                                    | Not known                    | <i>Pinus sylvestris</i>      | Brandenburg, German          | —                      | AJ278927                    | Unpublished                 |
|                                    | Not known                    | <i>Pinus sylvestris</i>      | Lower Saxonia, Germany       | —                      | AJ278930                    | Unpublished                 |
|                                    | Not Known                    | <i>Picea mariana</i>         | Quebec, Canada               | —                      | AY971695                    | Sokolski et al. 2007        |
|                                    | Not known                    | <i>Pinus nigra</i>           | Lexington, Kentucky, USA     | —                      | AY160202                    | Flowers et al. 2003         |
|                                    | Not known                    | <i>Pinus sylvestris</i>      | Brandenburg, Germany         | —                      | AJ278925                    | Unpublished                 |
|                                    | Not known                    | <i>Pinus</i> sp.             | Germany                      | —                      | AY253451                    | Filip et al. 2003           |
|                                    | Not known                    | <i>Pinus sylvestris</i>      | Michigan, USA                | —                      | AF013228                    | Unpublished                 |
|                                    | Not known                    | <i>Pinus sylvestris</i>      | Lower Saxonia, Germany       | —                      | AJ278929                    | Unpublished                 |
|                                    | Not known                    | <i>Pinus sylvestris</i>      | Brandenburg, Germany         | —                      | AJ278926                    | Unpublished                 |
|                                    | Not known                    | <i>Pseudotsuga menziesii</i> | Michigan, USA                | —                      | AF462439                    | Unpublished                 |
|                                    | <i>Hormonema macrosporum</i> | CBS 536.94                   | <i>Rutilus rutilus</i> gills | Vologda region, Russia | —                           | AJ244247                    |
| <i>Kabatiella caulivora</i>        | CBS 242.64                   | <i>Trifolium incarnatum</i>  | USA                          | —                      | EU167576                    | Simon et al. 2009           |
| <i>Kabatiella lini</i>             | CBS 125.21                   | <i>Linum usitatissimum</i>   | UK                           | FJ150946               | FJ150897                    | Zalar et al. 2008           |
| <i>Kabatiella microsticta</i>      | CBS 342.66                   | <i>Convallaria majalis</i>   | Germany                      | —                      | EU167608                    | Simon et al. 2009           |
| <i>Kabatina juniperi</i>           | Not Known                    | <i>Juniper chinensis</i>     | —                            | —                      | AY183367                    | Unpublished                 |
| <i>Kabatina thujae</i>             | CBS 238.66                   | <i>Thuja occidentalis</i>    | Berlin, Germany              | —                      | AF013226                    | Unpublished                 |
| <i>Phaeocryptopus nudus</i>        | CBS 268.37                   | <i>Abies balsamea</i>        | Germany                      | GU301856               | —                           | Schoch et al. 2009          |
| <i>Rhizosphaera kalkhoffii</i>     | CBS 114656                   | <i>Picea pungens</i>         | Germany                      | —                      | EU700376                    | Unpublished                 |
|                                    | CBS 280.38                   | <i>Picea pungens</i>         | Eberswalde, Germany          | —                      | EU700375                    | Unpublished                 |
| <i>Rhizosphaera macrospora</i>     | ATCC 4636                    | <i>Abies alba</i>            | France                       | —                      | AF462431                    | Unpublished                 |
| <i>Rhizosphaera oudemansii</i>     | CBS 226.83                   | <i>Abies pinsapo</i>         | Spain                        | —                      | EU700366                    | Park et al. 2006            |
| <i>Rhizosphaera pseudotsugae</i>   | CBS 101222                   | <i>Pseudotsuga menziesii</i> | Not known                    | —                      | EU700369                    | Unpublished                 |
| <i>Scleroconidioma</i> sp.         | Not known                    | <i>Gaultheria shallon</i>    | Canada                       | —                      | AB366648                    | Osono et al. 2008           |
| <i>Scleroconidioma sphagnicola</i> | UAMH 9731                    | <i>Sphagnum fuscum</i>       | Alberta, Canada              | —                      | AY220610                    | Hambleton et al. 2003       |
|                                    | Not known                    | Spruce Litter                | Czech Republic               | —                      | DQ182416                    | Koukol et al. 2006          |
| <i>Sclerophoma pityophila</i>      | Not known                    | <i>Pinus sylvestris</i>      | Michigan, USA                | —                      | AF462438                    | Unpublished                 |
| <i>Selenophoma lini</i>            | CBS 468.48                   | <i>Linum usitatissimum</i>   | Canada                       | EU754212               | —                           | de Gruyter et al. 2009      |
| <i>Selenophoma mahoniae</i>        | CBS 388.92                   | <i>Mahonia repens</i>        | USA                          | EU754213               | —                           | de Gruyter et al. 2009      |
| Sterile mycelium                   | Not known                    | <i>Ammophila arenaria</i>    | Galicia, Spain               | —                      | AM921728                    | Sánchez-Márquez et al. 2008 |
| <i>Stylodothis puccinioides</i>    | CBS 193.58                   | <i>Viburnum lantana</i>      | Switzerland                  | AY004342               | —                           | Lumbsch et al. 2000         |
| <i>Sydowia polyspora</i>           | Not known                    | <i>Abies nordmanniana</i>    | Slovakia                     | —                      | GQ412728                    | Unpublished                 |
|                                    | Not known                    | <i>Abies nordmanniana</i>    | Denmark                      | —                      | GQ412722                    | Unpublished                 |
|                                    | Not known                    | <i>Abies nordmanniana</i>    | Norway                       | —                      | GQ412726                    | Unpublished                 |
|                                    | Not known                    | <i>Abies nordmanniana</i>    | Norway                       | —                      | GQ412727                    | Unpublished                 |
|                                    | CBS 248.93                   | <i>Abies nordmanniana</i>    | Germany                      | —                      | GQ412724                    | Unpublished                 |
|                                    | Not known                    | <i>Abies nordmanniana</i>    | USA                          | —                      | GQ412729                    | Unpublished                 |
|                                    | Not known                    | <i>Abies nordmanniana</i>    | Germany                      | —                      | GQ412723                    | Unpublished                 |
|                                    | Not known                    | <i>Abies nordmanniana</i>    | Denmark                      | —                      | GQ412721                    | Unpublished                 |
|                                    | Not known                    | <i>Abies nordmanniana</i>    | Austria                      | —                      | GQ412719                    | Unpublished                 |
|                                    | Not known                    | <i>Abies</i> sp.             | Norway                       | —                      | GQ996579                    | Unpublished                 |
|                                    | Not known                    | <i>Abies nordmanniana</i>    | Norway                       | —                      | GQ412725                    | Unpublished                 |
|                                    | CBS 128.64                   | <i>Pinus sylvestris</i>      | Wageningen, Netherlands      | —                      | AJ244262                    | de Hoog et al. 1999         |
|                                    | CBS 544.95                   | <i>Larix decidua</i>         | Putten, Netherlands          | —                      | AY152548                    | Verkley et al. 2004         |
|                                    |                              |                              |                              |                        | AY293068                    | Crous et al. 2003           |
|                                    | Not known                    | <i>Picea abies</i>           | Sweden                       | —                      | AY805637                    | Menkis et al. 2004          |
|                                    | CBS 116.29                   | <i>Pseudotsuga menziesii</i> | —                            | AY544675               | —                           | Schoch et al. 2006          |

<sup>a</sup>Cultures are deposited in the following collections: ATCC, American Type Culture Collection, Manassas; CBS, Centraalbureau voor Schimmelcultures, Utrecht, the Netherlands; DAOM, National Mycological Herbarium, Ottawa, Ontario; and UAMH, University of Alberta Microfungus Collection and Herbarium, Edmonton, Alberta.

may represent an additional anamorph of *S. polyspora*, but further research is needed to properly elucidate the life histories of members of this lineage of conifer pathogens. We consider that *A. arboricola* is a potential causal agent for the white spruce decline observed in our study area in Larch Valley because it develops numerous hyphal and meristematically dividing cells in the peridermal region of white spruce bark beneath the conidiomata, and it shows strong phylogenetic affinities to a clade of fungi known to be conifer pathogens: *Sydowia polyspora* (Smerlis 1970; Kraj 2009; Kraj et al. 2009), *Delphinella abietina* (Solheim and Skage 2002), and *Rhizosphaera kalkhoffii* (Juzwik 1993). However, additional infection and re-isolation experiments are required to confirm this supposition.

## Acknowledgments

We thank Y. Currah for kindly providing the Latin description. This research was funded by a Discovery grant from the Natural Sciences and Engineering Research Council of Canada to R.S.C.

## References

- Arenz, B.E., and Blanchette, R.A. 2009. Investigations of fungal diversity in wooden structures and soils at historic sites on the Antarctic Peninsula. *Can. J. Microbiol.* **55**(1): 46–56. doi:10.1139/W08-120. PMID:19190700.
- Barr, M.E. 1972. Preliminary studies on the Dothideales in temperate North America. *Contrib. Univ. Mich. Herb.* **9**: 523–638.
- Bills, G.F., Collado, J., Ruibal, C., Pelaez, F., and Plata, G. 2004. *Hormonema carpetanum* sp. nov., a new lineage of dothideaceous black yeasts from Spain. *Stud. Mycol.* **50**: 149–157.
- Butin, H. 1964. Über zwei Nebenfruchtformen von *Sydowia polyspora* (Bref. Et v Tav.) Müller. *Sydowia*, **17**: 114–118. [In German.]
- Castresana, J. 2000. Selection of conserved blocks from multiple alignments for their use in phylogenetic analysis. *Mol. Biol. Evol.* **17**(4): 540–552. PMID:10742046.
- Chabasse, D. 2002. Les phaeohyphomycetes agents de phaeohyphomycoses: des champignons émergents. *J. Mycol. Med.* **12**: 65–85. [In French.]
- Chase, M.W., and Fay, M.F. 2009. Barcoding of plants and fungi. *Science*, **325**(5941): 682–683. doi:10.1126/science.1176906. PMID:19644072.
- Crous, P.W., Groenewald, J.Z., Wingfield, M.J., and Aptroot, A. 2003. The value of ascospore septation in separating *Mycosphaerella* from *Sphaerulina* in the Dothideales: a Saccardoan myth? *Sydowia*, **55**: 136–152.
- Crous, P.W., Summerell, B.A., Carnegie, A.J., Mohammed, C., Himaman, W., and Groenewald, J.Z. 2007. Foliicolous *Mycosphaerella* spp. and their anamorphs on *Corymbia* and *Eucalyptus*. *Fungal Divers.* **26**: 143–185.
- Davey, M.L., and Currah, R.S. 2007. A new species of *Cladophialophora* (hyphomycetes) from boreal and montane bryophytes. *Mycol. Res.* **111**(1): 106–116. doi:10.1016/j.mycres.2006.10.004. PMID:17169546.
- de Gruyter, J., Aveskamp, M.M., Woudenberg, J.H., Verkley, G.J., Groenewald, J.Z., and Crous, P.W. 2009. Molecular phylogeny of *Phoma* and allied anamorph genera: towards a reclassification of the *Phoma* complex. *Mycol. Res.* **113**(4): 508–519. doi:10.1016/j.mycres.2009.01.002. PMID:19272327.
- de Hoog, G.S., Zalar, P., Urzi, C., de Leo, F., Yurlova, N.A., and Sterflinger, K. 1999. Relationships of dothideaceous black yeasts and meristematic fungi based on 5.8S and ITS2 rDNA sequence comparison. *Stud. Mycol.* **43**: 31–37.
- de Hoog, G.S., Guarro, J., Gene, J., and Figueras, M.J. 2000. Atlas of clinical fungi. 2nd ed. Vol. 1. Centraalbureau voor Schimmelcultures, Utrecht, the Netherlands.
- Eberhardt, U. 2010. A constructive step towards selecting a DNA barcode for fungi. *New Phytol.* **187**(2): 265–268. doi:10.1111/j.1469-8137.2010.03329.x. PMID:20642723.
- Felsenstein, J. 1985. Confidence limits on phylogenies: an approach to using the bootstrap. *Evolution*, **39**(4): 783–791. doi:10.2307/2408678.
- Filip, P., Weber, R.W.S., Sterner, O., and Anke, T. 2003. Hormonemate, a new cytotoxic and apoptosis-inducing compound from the endophytic fungus *Hormonema dematioides*. *Z. Naturforsch.* **58**(7–8): 547–552. PMID:12939042.
- Flowers, J., Hartman, J., and Vaillancourt, L. 2003. Detection of latent *Sphaeropsis sapinea* infections in Austrian pine tissues using nested-polymerase chain reaction. *Phytopathology*, **93**(12): 1471–1477. doi:10.1094/PHYTO.2003.93.12.1471. PMID:18943610.
- Gardes, M., and Bruns, T.D. 1993. ITS primers with enhanced specificity for basidiomycetes — application to the identification of mycorrhizae and rusts. *Mol. Ecol.* **2**(2): 113–118. doi:10.1111/j.1365-294X.1993.tb00005.x. PMID:8180733.
- Guindon, S., and Gascuel, O. 2003. A simple, fast, and accurate algorithm to estimate large phylogenies by maximum likelihood. *Syst. Biol.* **52**(5): 696–704. doi:10.1080/10635150390235520. PMID:14530136.
- Hambleton, S., Tsuneda, A., and Currah, R.S. 2003. Comparative morphology and phylogenetic placement of two microsclerotial black fungi from *Sphagnum*. *Mycologia*, **95**(5): 959–975. doi:10.2307/3762024. PMID:21149003.
- Hennebert, G.L., and Sutton, B.C. 1994. Unitary parameters in conidiogenesis. In *Ascomycete systematics: problems and perspectives in the nineties*. Edited by D.L. Hawksworth. Plenum Press, New York. pp. 65–76.
- Hermanides-Nijhof, E.N. 1977. *Aureobasidium* and allied genera. *Stud. Mycol.* **5**: 141–177.
- Hibbett, D.S., Binder, M., Bischoff, J.F., Blackwell, M., Cannon, P.F., Eriksson, O.E., Huhndorf, S., James, T., Kirk, P.M., Lücking, R., Thorsten Lumbsch, H., Lutzoni, F., Matheny, P.B., McLaughlin, D.J., Powell, M.J., Redhead, S., Schoch, C.L., Spatafora, J.W., Stalpers, J.A., Vilgalys, R., Aime, C., Aptroot, A., Bauer, R., Begerow, D., Benny, G.L., Castlebury, L.A., Crous, P.W., Dai, Y. C., Gams, W., Geiser, D.M., Griffith, G.W., Gueidan, C., Hawksworth, D.L., Hestmark, G., Hosaka, K., Humber, R.A., Hyde, K.D., Ironside, J.E., Koljalg, U., Kurtzman, C.P., Larsson, K.-H., Lichtwardt, R., Longcore, J., Miadlikowska, J., Miller, A., Moncalvo, J.-M., Mozley-Stanridge, S., Oberwinkler, F., Parmasto, E., Reeb, V., Rogers, J.D., Roux, C., Ryvarden, L., Sampaio, A., Schussler, A., Sugiyama, J., Thorn, R.G., Tibell, L., Untereiner, W.A., Walker, C., Wang, Z., Weir, A., Weiss, M., White, M.M., Winka, K., Yao, Y.-J., and Zhang, N. 2007. A higher-level phylogenetic classification of the fungi. *Mycol. Res.* **111**(5): 509–547. doi:10.1016/j.mycres.2007.03.004. PMID:17572334.
- Higgins, K.L., Arnold, A.E., Miadlikowska, J., Sarvate, S.D., and Lutzoni, F. 2007. Phylogenetic relationships, host affinity, and geographic structure of boreal and arctic endophytes from three major plant lineages. *Mol. Phylogenet. Evol.* **42**(2): 543–555. doi:10.1016/j.ympev.2006.07.012. PMID:17005421.
- Hoffman, M.T., and Arnold, A.E. 2008. Geographic locality and host identity shape fungal endophyte communities in cupressaceae



- trees. *Mycol. Res.* **112**(3): 331–344. doi:10.1016/j.mycres.2007.10.014. PMID:18308531.
- Jacobs, K.A., and Rehner, S.A. 1998. Comparison of cultural and morphological and ITS sequences in anamorphs of *Botryosphaeria* and related taxa. *Mycologia*, **90**(4): 601–610. doi:10.2307/3761219.
- Jeewon, R., Liew, E.C., and Hyde, K.D. 2002. Phylogenetic relationships of *Pestalotiopsis* and allied genera inferred from ribosomal DNA sequences and morphological characters. *Mol. Phylogenet. Evol.* **25**(3): 378–392. doi:10.1016/S1055-7903(02)00422-0. PMID:12450745.
- Juzwik, J. 1993. Morphology, cultural characteristics, and pathogenicity of *Rhizosphaera kalkhoffii* on *Picea* spp. in northern Minnesota and Wisconsin. *Plant Dis.* **77**(6): 630–634. doi:10.1094/PD-77-0630.
- Katoh, K., and Toh, H. 2008. Recent developments in the MAFFT multiple sequence alignment program. *Brief. Bioinform.* **9**(4): 286–298. doi:10.1093/bib/bbn013. PMID:18372315.
- Koukol, O., Mrnka, L., Kulhankova, A., and Vosatka, M. 2006. Competition of *Scleroconidioma sphagnicola* with fungi decomposing spruce litter needles. *Can. J. Bot.* **84**(3): 469–476. doi:10.1139/B06-021.
- Kraj, W. 2009. Differentiation and genetic structure of *Sclerophoma pythiophila* strains on *Pinus sylvestris* in Poland. *J. Phytopathol.* **157**(7–8): 400–406. doi:10.1111/j.1439-0434.2008.01497.x.
- Kraj, W., Kowalski, T., and Zarek, M. 2009. Differentiation and genetic structure of *Sclerophoma pithiophila* (Corda) V. Hoehn. strains associated with various damage and disease symptoms on *Pinus sylvestris* L. *Acta Agrobot.* **62**: 57–65.
- Lennox, C.L., Serdani, M., Groenewald, J.Z., and Crous, P.W. 2004. *Prosopidicola mexicana* gen. et sp. nov. causing a new pod disease of *Prosopis* species. *Stud. Mycol.* **50**: 187–194.
- Lumbsch, H.T., and Lindemuth, R. 2001. Major lineages of Dothideomycetes (Ascomycota) inferred from SSU and LSU rDNA sequences. *Mycol. Res.* **105**: 901–908.
- Lumbsch, H.T., Lindemuth, R., and Schmitt, I. 2000. Evolution of filamentous Ascomycetes inferred from LSU rDNA sequence data. *Plant Biol.* **2**(5): 525–529. doi:10.1055/s-2000-7472.
- Marincowitz, S., Crous, P.W., Groenewald, J.Z., and Wingfield, M.J. 2008. Microfungi occurring on Proteaceae in the fynbos. CBS biodiversity series 7. Centraalbureau voor Schimmelcultures, Utrecht, the Netherlands.
- Meek, G.A. 1976. Practical electron microscopy for biologists. Wiley–Interscience, London.
- Menkis, A., Allmer, J., Vasiliauskas, R., Lygis, V., Stenlid, J., and Finlay, R. 2004. Ecology and molecular characterization of dark septate fungi from roots, living stems, coarse and fine woody debris. *Mycol. Res.* **108**(8): 965–973. doi:10.1017/S0953756204000668. PMID:15449602.
- Murray, M.G., and Thompson, W.F. 1980. Rapid isolation of high molecular weight plant DNA. *Nucleic Acids Res.* **8**(19): 4321–4325. doi:10.1093/nar/8.19.4321. PMID:7433111.
- Osono, T., Iwamoto, S., and Trofymow, J.A. 2008. Colonization and decomposition of salal (*Gaultheria shallon*) leaf litter by saprobic fungi in successional forests on coastal British Columbia. *Can. J. Microbiol.* **54**(6): 427–434. doi:10.1139/W08-023. PMID:18535627.
- Palencarova, E., Jesenska, Z., Plank, L., Straka, S., Baska, T., Hajtman, A., and Pec, J. 1995. Phaeohyphomycosis caused by *Alternaria* species and *Phaeosclera dematioides* Sigler, Tsuneda and Carmichael. *Clin. Exp. Dermatol.* **20**(5): 419–422. doi:10.1111/j.1365-2230.1995.tb01362.x. PMID:8593722.
- Park, J.Y., Kim, K.M., and Jung, H.S. 2006. *Rhizosphaera densiflorae* sp. nov. is described as a new species based on morphological and molecular data. Proceedings of the Annual Meeting of the Mycological Society of Japan. **50**: 59.
- Posada, D. 2008. jModelTest. Phylogenetic model averaging. *Mol. Biol. Evol.* **25**(7): 1253–1256. doi:10.1093/molbev/msn083. PMID:18397919.
- Reeb, V., Lutzoni, F., and Roux, C. 2004. Contribution of RPB2 to multilocus phylogenetic studies of the euascomycetes (Pezizomycotina, Fungi) with special emphasis on the lichen-forming Acarosporaceae and evolution of polyspory. *Mol. Phylogenet. Evol.* **32**(3): 1036–1060. doi:10.1016/j.ympev.2004.04.012. PMID:15288074.
- Ronquist, F., and Huelsenbeck, J.P. 2003. MrBayes 3: Bayesian phylogenetic inference under mixed models. *Bioinformatics*, **19**(12): 1572–1574. doi:10.1093/bioinformatics/btg180. PMID:12912839.
- Ruibal, C., Platas, G., and Bills, G.F. 2008. High diversity and morphological convergence among melanised fungi from rock formations in the central mountain system of Spain. *Persoonia*, **21**: 93–110. PMID:20396580.
- Sánchez-Márquez, S., Bills, G.F., and Zabalgoitia, I. 2008. Diversity and structure of the fungal endophytic assemblages from two sympatric coastal grasses. *Fungal Divers.* **33**: 87–100.
- Schoch, C.L., Shoemaker, R.A., Seifert, K.A., Hambleton, S., Spatafora, J.W., and Crous, P.W. 2006. A multigene phylogeny of the Dothideomycetes using four nuclear loci. *Mycologia*, **98**(6): 1041–1052. doi:10.3852/mycologia.98.6.1041. PMID:17486979.
- Schoch, C.L., Crous, P.W., Groenewald, J.Z., Boehm, E.W.A., Burgess, T.I., de Gruyter, J., de Hoog, G.S., Dixon, L.J., Grube, M., Gueidan, C., Harada, Y., Hatakeyama, S., Hirayama, K., Hosoya, T., Huhndorf, S.M., Hyde, K.D., Jones, E.B.G., Kohlmeyer, J., Kruijs, A., Li, Y.M., Lücking, R., Lumbsch, H. T., Marvanová, L., Mbatchou, J.S., McVay, A.H., Miller, A.N., Mugambi, G.K., Muggia, L., Nelsen, M.P., Nelson, P., Owensby, C.A., Phillips, A.J.L., Phongpachit, S., Pointing, S.B., Pujade-Renaud, V., Raja, H.A., Rivas Plata, E., Robbertse, B., Ruibal, C., Sakayaroj, J., Sano, T., Selbmann, L., Shearer, C.A., Shirouzu, T., Sliippers, B., Suetrong, S., Tanaka, K., Volkman-Kohlmeyer, B., Wingfield, M.J., Wood, A.R., Woudenberg, J.H.C., Yonezawa, H., Zhang, Y., and Spatafora, J.W. 2009. A class-wide phylogenetic assessment of Dothideomycetes. *Stud. Mycol.* **64**(1): 1–15, 15–S10. doi:10.3114/sim.2009.64.01. PMID:20169021.
- Seifert, K.A. 2009. Progress towards DNA barcoding of fungi. *Mol. Ecol. Res.* **9**: 83–89. doi:10.1111/j.1755-0998.2009.02635.x.
- Selbmann, L., de Hoog, G.S., Mazzaglia, A., Friedmann, E.I., and Onofri, S. 2005. Fungi at the edge of life: cryptoendolithic black fungi from Antarctic desert. *Stud. Mycol.* **51**: 1–32.
- Shoemaker, R.A., and Hambleton, S. 2005. *Dothidea sambuci* and *Diaporthe spiculosa*. *Can. J. Bot.* **83**(5): 484–490. doi:10.1139/b05-023.
- Sigler, L., Tsuneda, A., and Carmichael, J.W. 1981. *Phaeotheca* and *Phaeosclera*, two new genera of dematiaceous Hyphomycetes and a redescription of *Sarcinomyces* Lindner. *Mycotaxon*, **12**: 449–467.
- Simon, U.K., Groenewald, J.Z., and Crous, P.W. 2009. *Cymadothea trifolii*, an obligate biotrophic leaf parasite of *Trifolium*, belongs to Mycosphaerellaceae as shown by nuclear ribosomal DNA analyses. *Persoonia*, **22**: 49–55. PMID:20198137.
- Smerlis, E. 1970. Notes on *Sydowia polyspora*. *Can. J. Bot.* **48**(9): 1613–1615. doi:10.1139/b70-238.
- Sokolski, S., Bernier-Cardou, M., Piché, Y., and Berube, J.A. 2007. Black spruce (*Picea mariana*) foliage hosts numerous and potentially endemic fungal endophytes. *Can. J. For. Res.* **37**(9): 1737–1747. doi:10.1139/X07-037.
- Solheim, H., and Skage, J.-O. 2002. Losses caused by the needle

- blight fungus *Delphinella abietis* in a greenery trial of Nobel fir in western Norway. *For. Pathol.* **32**: 373–377.
- Spatafora, J.W., Sung, G.H., Johnson, D., Hesse, C., O'Rourke, B., Serdani, M., Spotts, R., Lutzoni, F., Hofstetter, V., Miadlikowska, J., Reeb, V., Gueidan, C., Fraker, E., Lumbsch, T., Lücking, R., Schmitt, I., Hosaka, K., Aptroot, A., Roux, C., Miller, A.N., Geiser, D.M., Hafellner, J., Hestmark, G., Arnold, A.E., Büdel, B., Rauhut, A., Hewitt, D., Untereiner, W.A., Cole, M.S., Scheidegger, C., Schultz, M., Sipman, H., and Schoch, C.L. 2006. A five-gene phylogeny of Pezizomycotina. *Mycologia*, **98**(6): 1018–1028. doi:10.3852/mycologia.98.6.1018. PMID:17486977.
- Sterflinger, K., de Hoog, G.S., and Haase, G. 1999. Phylogeny and ecology of meristematic ascomycetes. *Stud. Mycol.* **43**: 5–22.
- Summerell, B.A., Groenwald, J.Z., Carnegie, A.J., Summerbell, R.C., and Crous, P.W. 2006. *Eucalyptus* microfungi known from culture. 2. *Alysidiella*, *Fusculina*, and *Phlogicylindrium* genera nova, with notes on some other poorly known taxa. *Fungal Divers.* **23**: 323–350.
- Sutton, B.C. 1980. The Coelomycetes. Commonwealth Mycological Institute, Kew, Surrey, UK.
- Sutton, B.C., and Waterston, J.M. 1970. *Sydowia polyspora*. CMI Description of Pathogenic Fungi and Bacteria, No. 228, Kew, Surrey, UK.
- Swofford, D.L. 2003. PAUP\*: phylogenetic analysis using parsimony (\*and other methods). Version 4. Sinauer Associates, Sunderland, Mass.
- Tsuneda, A., and Currah, R.S. 2006. Toward a deeper understanding of the nature of pleomorphism in conidial fungi. *Rep. Tottori Mycol. Inst.* **44**: 1–52.
- Tsuneda, A., Thormann, M.N., and Currah, R.S. 2000. *Scleroconidioma*, a new genus of dematiaceous Hyphomycetes. *Can. J. Bot.* **78**(10): 1294–1298. doi:10.1139/cjb-78-10-1294.
- Tsuneda, A., Chen, M.H., and Currah, R.S. 2001. Characteristics of a disease of *Sphagnum fuscum* caused by *Scleroconidioma sphagnicola*. *Can. J. Bot.* **79**(10): 1217–1224. doi:10.1139/cjb-79-10-1217.
- Tsuneda, A., Hambleton, S., and Currah, R.S. 2004a. Morphology and phylogenetic placement of *Endoconidioma*, a new endoconidial genus from trembling aspen. *Mycologia*, **96**(5): 1128–1135. doi:10.2307/3762094. PMID:21148931.
- Tsuneda, A., Tsuneda, I., and Currah, R.S. 2004b. Endoconidiogenesis in *Endoconidioma populi* and *Phaeothecha fissurella*. *Mycologia*, **96**(5): 1136–1142. doi:10.2307/3762095. PMID:21148932.
- Tsuneda, A., Davey, M.L., Hambleton, S., and Currah, R.S. 2008. *Endosporium*, a new endoconidial genus allied to the Myriangiales. *Botany*, **86**(9): 1020–1033. doi:10.1139/B08-054.
- Tsuneda, A., Davey, M.L., Tsuneda, I., and Currah, R.S. 2010. Two new dothideomycetous endoconidial genera from declining larch. *Botany*, **88**(5): 471–487. doi:10.1139/B10-015.
- Verkley, G.J.M., Starink-Willemse, M., van Iperen, A., and Abeln, E. C.A. 2004. Phylogenetic analyses of *Septoria* species based on the ITS and LSU-D2 regions of nuclear ribosomal DNA. *Mycologia*, **96**(3): 558–571. doi:10.2307/3762175. PMID:21148878.
- Vilgalys, R., and Hester, M. 1990. Rapid genetic identification and mapping of enzymatically amplified ribosomal DNA from several *Cryptococcus* species. *J. Bacteriol.* **172**(8): 4238–4246. PMID:2376561.
- White, T.J., Bruns, T., Lee, S., and Taylor, J. 1990. Amplification and direct sequencing of fungal ribosomal RNA genes for phylogenetics. *In* PCR protocols: a guide to the methods and applications. Edited by A.J. Michael, D.H. Gelfand, J.J. Sninsky, and T.J. White. Academic Press, New York. pp. 315–322.
- Yurlova, N.A., de Hoog, G.S., and Gerrits van der Ende, A.H.G. 1999. Taxonomy of *Aureobasidium* and allied genera. *Stud. Mycol.* **43**: 63–69.
- Zalar, P., Gostinčar, C., de Hoog, G.S., Uršič, V., Sudhaham, M., and Gunde-Cimerman, N. 2008. Redefinition of *Aureobasidium pullulans* and its varieties. *Stud. Mycol.* **61**(1): 21–38. doi:10.3114/sim.2008.61.02. PMID:19287524.
- Zwickl, D.J. 2006. Genetic algorithm approaches for the phylogenetic analysis of large biological sequence datasets under the maximum likelihood criterion. Ph.D. dissertation, University of Texas, Austin, Texas.