

## Foliar Pathogens in Guam: *Ascochyta*

Diseases: Gummy Stem Blight, Leaf Spot

Robert L. Schlub, Ph.D., Julia Hudson, and Elizabeth Hahn  
Cooperative Extension & Outreach, College of Natural & Applied Sciences,  
University of Guam

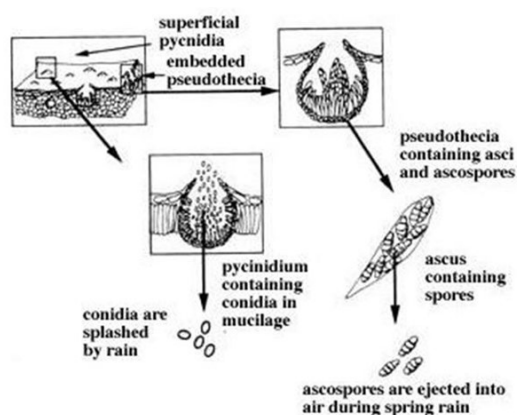


Figure 1. Flow chart of pycnidia and conidia; and pseudothecia, asci, and ascospores of *Ascochyta* spp.

Source: [http://www.microfarms.com/technical/greenhousecd/greenhouse/pests/diseases/ascochyta\\_blight.htm](http://www.microfarms.com/technical/greenhousecd/greenhouse/pests/diseases/ascochyta_blight.htm)

### Introduction

*Ascochyta*, *Didymella*, and *Stagonosporopsis* encompass the main genera within the family *Didymellaceae*. These fungi produce conidia (asexual spores) within a pycnidia (fungal fruiting structure). The conidia are generally 2-celled whereas the closely related genera of *Phyllosticta* and *Phoma* are generally one-celled. *Didymella* refers to the fact that the fungus produces ascospores with an ascus. **GUMMY STEM BLIGHT** is caused by the fungus *Stagonosporopsis cucurbitacearum*, *S. citrulli*, and *S. caricae* (syn. *Aschochyta cucumis* and *Didymella bryoniae*). It is an important disease of melons and watermelon on Guam. The name “gummy stem blight” is derived from the fact that it causes a blight on the leaves (rapid killing of the leaves) and stem lesions that may form a gummy exudate.

### Hosts

In the Index of Plant Diseases on Guam, hosts of gummy stem blight included cucumber, melon, summer squash, and watermelon. Watermelon and melon being the most commonly reported. In the Diseases of Cultivated Crops

in Pacific Island Countries, *Ascochyta* leaf spot was mentioned on bean and bittermelon and gummy stem blight was mentioned on watermelon and cucumber.

### Morphology of *Stagonosporopsis cucurbitacearum*

Conidia (asexual spores) are produced in a pycnidia (Fig. 1, 2, & 3). Superficial pycnidia are tan to brown and 120-180  $\mu\text{m}$  in diameter (Fig. 2, Fig. 3). They may be irregular in shape, separated, or in small groups; usually with a single pore-like opening (ostiole). Conidia are hyaline, cylindrical with rounded ends, one or two celled, 3-5 x 6-10  $\mu\text{m}$  (Fig. 1, Fig. 4), and may contain oil-like drops. Conidiophores are usually absent.

Ascospores (sexual spores) are occasionally produced on Guam and appear in club-shaped asci (sacks). These asci are produced in a pseudothecia (Fig. 1). Pseudothecia are brown to black, 125-210  $\mu\text{m}$  in diameter, and are typically embedded within the host surface, eventually becoming erumpent (Fig. 1, Fig. 7). Within the pseudothecia, cylindrical and bitunicate asci (10-15 x 60-90  $\mu\text{m}$ ) produce eight ascospores per ascus. The ascospores are 13-18 x 4-6  $\mu\text{m}$ , hyaline, two celled with a constriction at the septum, and rounded on the ends (Fig. 1).

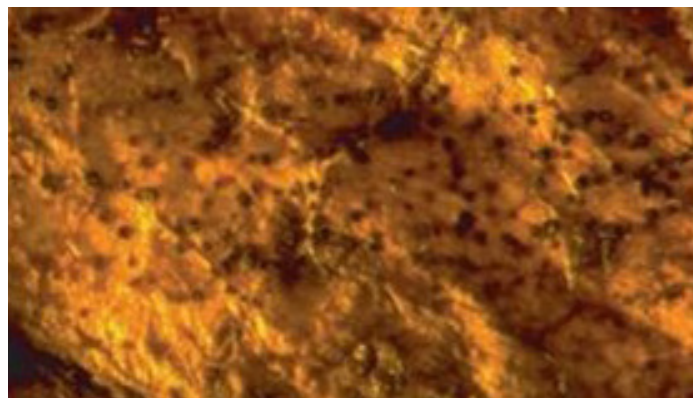


Figure 2. Example of fruiting bodies (pycnidia or pseudothecia) produced by *Ascochyta* spp.

Photo: R.L. Schlub

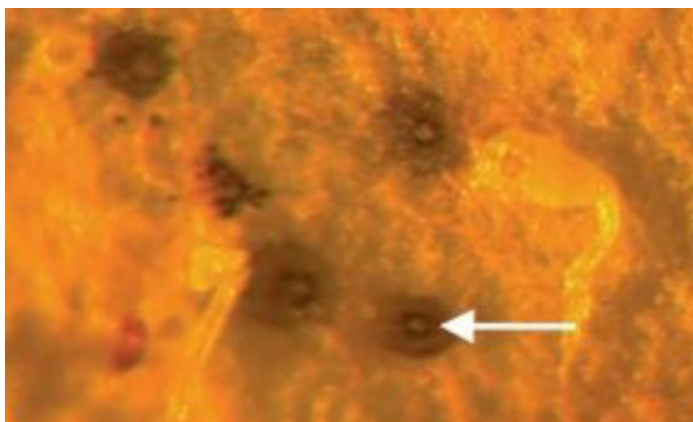


Figure 3. Pycnidia of *Ascochyta* spp. with ostiole (shown by arrow)  
Photo: R.L. Schlub

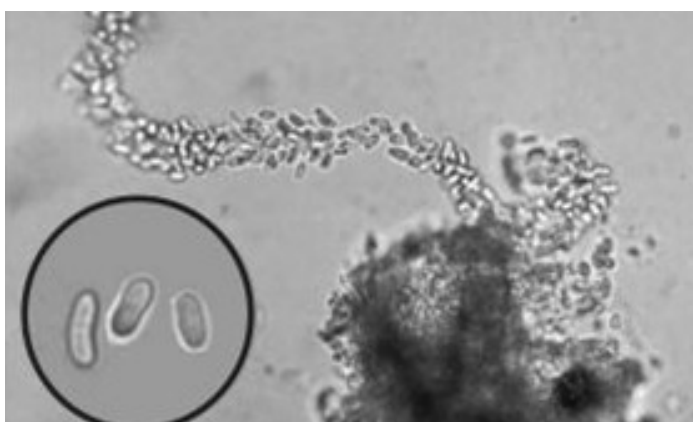


Figure 4. Conidia of *Ascochyta* spp. oozing from a pycnidium. Imbedded photo: close-up of conidia  
Photo: R.L. Schlub

### Visibility of *Stagonosporopsis cucurbitacearum*

- **With the unaided eye:** pycnidia and pseudothecia (if present) are barely visible (Fig. 6, Fig. 7).
- **With a 14X coddington hand lens:** pycnidia and pseudothecia (if present) are clearly visible (Fig. 2).
- **With a dissecting microscope:** pycnidia appear roughly spherical in shape with an opening at the top (ostiole) (Fig. 3). Pseudothecia (if present) are slightly larger than pycnidia and spherical.
- **With a compound microscope:** oval, one or two-celled conidia are seen being released from pycnidia (Fig. 4). Less commonly seen are ascospores, which form within club-shaped asci which are released with rupture of a pseudothecium.

### Disease Development on Guam

Gummy stem blight symptoms affect all above-ground vegetative and reproductive parts of the cucurbits (cucumbers, gourds, melons, squashes, and pumpkins). On Guam, it commonly occurs in melon and watermelon fields and on occasion may lead to substantial losses. Optimal conditions include temperatures above 68° F, high day time humidity, and periods of moisture greater than 24 hrs. Spores of the gummy stem blight fungus are primarily dispersed by wind-driven rain. A film of moisture is necessary for spores to germinate and penetrate leaf tissue. Wounds caused by pruning, insects or field work can also serve as points of entry.



Figure 5. Black spots caused by gummy stem blight on watermelon  
Photo: R.L. Schlub



Figure 6. Gummy stem blight infection on upper leaf surface of watermelon seedling. Pycnidia are barely visible in the center of the spot  
Source: [https://www.pestnet.org/fact\\_sheets/watermelon\\_gummy\\_stem\\_blight\\_007.htm](https://www.pestnet.org/fact_sheets/watermelon_gummy_stem_blight_007.htm)

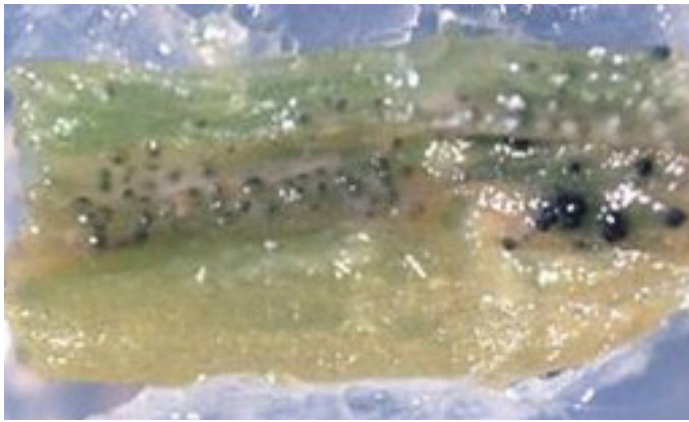


Figure 7. Pycnidia (left) and pseudothecia (right) of a gummy stem blight infection developed on the same piece of melon stem  
Source: <http://vegetablemdonline.ppath.cornell.edu/PhotoPages/Cucurbit/Gummy/GSBfs2.htm>



Figure 8. Brown spots caused by gummy stem blight on melon  
Photo: R.L. Schlub

### Foliar Symptoms

Circular to triangular, 0.5 - 2 cm in diameter, brown (on melon– Fig. 8) to black (on watermelon– Fig. 5) spots appear on the leaves, often first at the margins. Spots enlarge rapidly until entire leaves are blighted, resulting in premature defoliation. This rapid leaf blight makes it difficult to find the fungus' fruiting bodies, but when seen, small pycnidia or pseudothecia appear as black specks in the centers of spots on the upper and lower leaf surfaces and stem cankers (Fig. 6, Fig. 7). Infected stems first develop water-soaked lesions, which later appear tan with a characteristic gummy exudate. This may girdle the plant, causing stunted growth or premature death.

Published: 19 October 2022

Published by the College of Natural & Applied Sciences (CNAS), University of Guam, in cooperation with the U.S. Department of Agriculture, under Dr. Lee S. Yudin, Director/Dean. University of Guam, CNAS, UOG Station, Mangilao, Guam 96923. © For reproduction and use permission, contact [cnasteam@triton.uog.edu](mailto:cnasteam@triton.uog.edu), (671) 735-2080. The University of Guam is an equal opportunity/affirmative action institution providing programs and services to the people of Guam without regard to race, sex, gender identity and expression, age, religion, color, national origin, ancestry, disability, marital status, arrest and court record, sexual orientation, or status as a covered veteran. Find CNAS publications at [uog.edu/extension/publications](http://uog.edu/extension/publications). If you anticipate needing any type of reasonable accommodation or have questions about the physical access provided, please call the UOG EEO/ADA/Title IX Office at (671) 735-2971/2244 or email [efgogue@triton.uog.edu](mailto:efgogue@triton.uog.edu).

### For further information

Contact the College of Natural & Applied Sciences, Extension and Outreach at 735-2080 for help or more information. Additional publications can be found on our website at: [uog.edu/extension/publications](http://uog.edu/extension/publications).

### Acknowledgments

This material is based upon work that is supported by the University of Guam and the National Institute of Food and Agriculture, U.S. Department of Agriculture, under award number 2019-38640-29880 through the Western Sustainable Agriculture Research and Education program under project number WPDP20-001. USDA is an equal opportunity employer and service provider. Any opinions, findings, conclusions, or recommendations expressed in this publication are those of the author(s) and do not necessarily reflect the view of the U.S. Department of Agriculture or the University of Guam. The factsheet was prepared by UOG Extension Specialist Robert L. Schlub, Ph.D. and UOG Extension Associates Julia Hudson and Elizabeth Hahn on 10/19/2022. Reviewed by Drs. Marin T. Brewer and Leilani G. Sumabat.

### References

- Schlub, R.L. (2017). Index of Plant Diseases in Guam. Guam Cooperative Extension, College of Natural & Applied Sciences.
- Kohler, F., Pellegrin, F., Jackson, G., & McKenzie, E.. (1997). Diseases of Cultivated Crops in Pacific Island Countries. South Pacific Commission
- The American Phytopathological Society. (2017). Compendium of Cucurbit Diseases and Pests, (2nd ed 2017). APS Press.
- Yudin, L. and Schlub, R. eds. (1998) Guam cucurbit guide, (2nd ed 2014), University of Guam UOG Station: Mangilao, Guam 20-33 <http://cnas-re.uog.edu/wp-content/uploads/2016/06/Guam-Cucurbit-Guide-2014-2nd-Edition-optimized.pdf>
- Mckenzie, E. (2013). *Didymella bryoniae*. New Zealand Biosecurity Pest and Disease Image Library (updated 03/2014). <https://www.padil.gov.au/maf-border/pest/main/143022>

