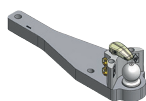


DRAWBARS WITH BALL

Series MF8170-8290

- ▶ **KBA8301ALX**
straight
item no. 8003679



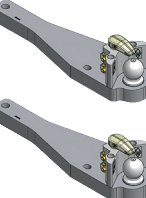
Series MF5425-5480/MF6270-6290

- ▶ **KBA8303M**
straight, 2 Positionen
item no. 8003286



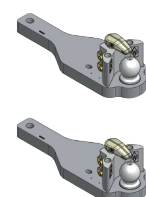
Series MF6445-6480

- ▶ **KBA8303LB**
straight
item no. 8002929
- ▶ **KBA8303FB**
straight
item no. 8002930



Series MF6485-6499 / 7619-7624

- ▶ **KBA8304LB**
straight
item no. 8003283
- ▶ **KBA8304FB**
straight
item no. 8004453



Series MF8650-8690


- ▶ **KBA8305OB**
straight
item no. 8003284
- ▶ **KBA8308ONB**
straight
item no. 8003684



Series MF3610-3690/MF8110-8160/MF8210-8250

- ▶ **KBA8385**
straight
item no. 8004455

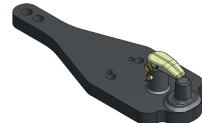


 forged tool-free downholder for compensation of high negative charges
360° free turnable for free sight
forged catch device with centering function

DRAWBARS WITH PITON

Series MF5425-5480/MF6270-6290

- ▶ **PBA5303M**
straight, 2 positions
item no. 8005132



Series MF6445-6480

- ▶ **PBA5303L**
straight
item no. 8005131



FORCED STEERING PARTS

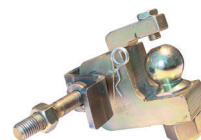
for drawbars KK80 and frames

- ▶ **ZWL-KBA-KU**
item no. 8004771
- ▶ **50-15-304**
item no. 8004444
- ▶ **50-15-304W15**
item no. 8004539
- ▶ **ZWL30KU-AS**
item no. 8004824
- ▶ **ZWL30W15KU-AS**
item no. 8004825
- ▶ **50-300**
item no. 8002496
- ▶ **50-310**
item no. 8002497
- ▶ **50-320**
item no. 8002498
- ▶ **ZWL303M**
item no. 8004977
- ▶ **ZWL303L**
item no. 8004978

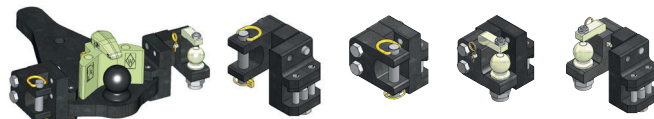
FORCED STEERING PARTS

for KB8309/KB8322/KB8335

- ▶ **50-15**
item no. 8002213
- for KB8329
- ▶ **50-15-25**
item no. 8002839



MOUNTING EXAMPLES



KK80 ball is replaceable up to 2x

series KU2000 with 360° free turnable pin



WALTERSCHEID – YOUR PARTNER ON THE TRACTOR REAR

Hydraulic toplinks with original Walterscheid hook, lower link hooks operated from the driver's seat, hydraulic lateral stabilizers for a safe and comfortable work in difficult terrain – only a few milestones in the world of coupling technology developed by Walterscheid within the last 30 years.

The integration of the former Walterscheid Cramer GmbH is another highlight and a big step forward on our track to bringing more convenience and safety into agricultural business. A wide range of coupling ladders including different inserts made Walterscheid into a full service provider for high quality coupling systems for tractors and self-propelled equipment. Focussing on safe and convenient coupling systems makes us an ideal partner for OEMs and farmers.

Walterscheid – we take agriculture forwards!

Off-Highway Powertrain Services Germany GmbH

Heiligenstädter Straße 17a
D-37351 Dingelstädt
phone: +49 36075 573-0
fax: +49 36075 573-23

hitches@walterscheid.com
www.walterscheid.com

For more information and technical details please call our hotline or download the latest version of the couplings catalogue on www.walterscheid.com

Walterscheid GmbH
Hauptstraße 150
D-53797 Lohmar
phone: +49 22 46 12-0
fax: +49 22 46 12-3501
www.walterscheid.com

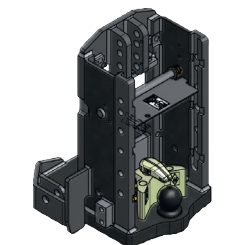


TCR 01268 01.12.XX.XX ©Printed in Germany

We reserve the right to change without prior consultation. Use products only for the specified applications. We only guarantee constant quality. Reproduction, even in part, is only authorised with the written consent of Walterscheid GmbH.



WALTERSCHEID COUPLING SYSTEMS FOR MASSEY FERGUSON TRACTORS



SERIES

100/200/300/500
1000/3000/4000
5000/6000/8000
7600/8900/9407



FRAMES

Series MF1014

- ▶ **KU300**
rail size W=335/30/22 mm – 7 H
item no. 8002446
- ▶ **KU300KK**
rail size W=335/30/22 mm – 6 H
item no. 8004718

Series MF233-294S

- ▶ **KU352**
rail size W=309/30/22 mm – 6 H
item no. 8002450

Series MF8170-8280

- ▶ **KU301ALX**
rail size W=322/30/22 mm – 8 H
item no. 8002733
- ▶ **KU301XKK**
rail size W=322/30/22 mm – 5 H
item no. 8002735
- ▶ **KU301BF**
rail size W=322/30/22 mm – 5 H
item no. 8002734

Series MF4215-4270/MF4315-4370/MF365

- ▶ **KU302**
rail size W=309/30/22 mm – 6 H
item no. 8002447
- ▶ **KU302K**
rail size W=309/30/22 mm – 5 H
item no. 8002605

Series MF5425-5480/MF6270-MF7290/MF6445-6480

- ▶ **KU303L**
rail size W=335/30/22 mm – 8 H
item no. 8002606
- ▶ **KU303KK**
rail size W=335/30/22 mm – 6 H
item no. 8002736
- ▶ **KU303F**
rail size W=335/30/22 mm – 5 H
item no. 8004619



FRAMES

Series MF135-590

- ▶ **KU306K**
rail size W=309/30/22 mm – 5 H
item no. 8002566

Series MF6485-6499 / 7619-7624

- ▶ **KU304L**
rail size W=335/30/22 mm – 8 H
item no. 8002608

- ▶ **KU304KKL**
rail size W=335/30/22 mm – 6 H
item no. 8002908

- ▶ **KU304F**
rail size W=335/30/22 mm – 5 H
item no. 8002607

Series MF8650-8690

- ▶ **KU355L**
rail size W=322/30/22 mm – 7 H
item no. 8002568

- ▶ **KU308KK**
rail size W=329/32/25 mm – 7 H
item no. 8004666

Series MF3610-3690/MF8110-8160/MF8210-8250

- ▶ **KU385**
rail size W=335/30/22 mm – 8 H
item no. 8002457

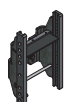
- ▶ **KU385KK**
rail size W=335/30/22 mm – 6 H
item no. 8004704

- ▶ **KU385K**
rail size W=335/30/22 mm – 4 H
item no. 8002618

Series MF4435-4455

- ▶ **KU347L**
rail size W=329/32/25 mm – 8 H
item no. 8004832

- ▶ **KU347KK**
rail size W=329/32/25 mm – 6 H
item no. 8004833



ADJUSTABLE MODELS

reference	rail size (mm)	item no.
KU2000/309NB	309/30/22	8004187
KU2000/322XB	322/30/22	8005104
KU2000/329NBFBF*	329/32/25	8004342
KU2000/335NB	335/30/22	8004182
KU2000/389XB	389/32/25	8005155



37mm spherical

KU5410/309	309/30/22	8003697
KU5410/322	322/30/22	8003698
KU5410/329*	329/32/25	8003699
KU5410/335	335/30/22	8003700
KU5410/389	389/32/25	8005153



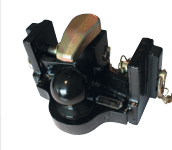
31mm cylindrical

KU2000/309NA5	309/30/22	8004185
KU2000/322NA5	322/30/22	8004189
KU2000/329NA5*	329/32/25	8004283
KU2000/335NA5	335/30/22	8004284
KU2000/389XA5	389/32/25	8005156



32mm cylindrical

KB8309	309/30/22	8002576
KB8322	322/30/22	8002578
KB8329*	329/32/25	8002579
KB8335	335/30/22	8002580
KB8389	389/32/25	8004858



KI8309	309/30/22	8002585
KI8322	322/30/22	8002588
KI8329*	329/32/25	8002589
KI8335	335/30/22	8002590



PB5309N	309/30/22	8003245
PB5322N	322/30/22	8003247
PB5329N*	329/32/25	8003248
PB5335N	335/30/22	8003249
PB5389N	389/32/25	8005143



*properly for OEM-frame

FRAMES

Series Telehandler 8925-8947 / 9407

- ▶ **KU331M**
rail size W=335/30/22 mm – 8 H
item no. 8002609



MORE MODELS

- ▶ **KU893/94008**
automatic 38 mm
item no. 8004041

- ▶ **KU866/94008**
automatic 38 mm
item no. 8004026

- ▶ **KU876/94008**
automatic 38 mm
item no. 8004032

- ▶ **KU2000/853B**
automatic 37 mm
item no. 8003996

- ▶ **KU2000/885NB**
automatic 37 mm
item no. 8004201

- ▶ **KU2000/829B**
automatic 37 mm
item no. 8003995

- ▶ **KU835**
manual pin
item no. 8002465



Walterscheid couplings are made for heavy duty work and mostly in use of forged parts



newest flexing-technology and modular design for flexible part design

