



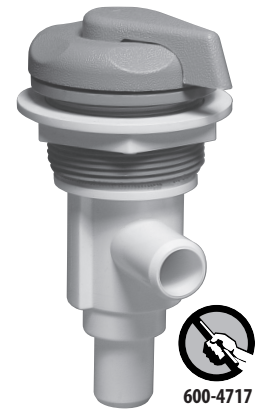
Top Side Valves / 5-Scallop Valves

FEATURES:

- Shuts off 100% with a 180° turn
- Available in two body sizes: ¾" Socket or ¾" Shur-Grip
- Used for waterfalls, water features or neck jets
- Available in multiple colors

Deluxe 180° Shut Off Valves

Part No.	Description	Style	Case Quantity	List (US \$)
600-4700	¾" S x ¾" S	5-Scallop	90	23.98
600-4710	Shur-Grip - ¾" SB x ¾" SB	5-Scallop	90	23.98



FEATURES:

- 100% shut off
- Three different body styles to choose from
- Horizontal model is submersible
- Top access for easy servicing
- Works great for waterfalls and neck jets
- Sleeve allows for on/off adjustments with fewer turns



On / Off Turn Valves

Part No.	Description	Style	Case Quantity	List (US \$)
600-4360	1" Vertical - Single Port	5-Scallop	100	22.61
600-4370	1" Vertical - Dual Port	5-Scallop	90	23.97
600-4380	1" Horizontal - Dual Port	5-Scallop	100	23.97
600-4600	1 ½" Vertical - Single Port	5-Scallop	40	28.31
602-4440	Sleeve (<i>low volume applications only</i>)	--	40	0.83



FEATURES:

- Diverts water to one or two ports
- Top access for easy service
- 2" model wall fittings are sealed with o-rings
- 1" models available with one or two ports
- Available in multiple colors



Top Access Diverter Valves

Part No.	Description	Style	Case Quantity	List (US \$)
600-4220	1" Vertical - 1-Port	5-Scallop	90	22.29
600-4210	1" Vertical - 2-Port	5-Scallop	90	22.29
600-4230	1" Horizontal - 2-Port	5-Scallop	90	22.29
600-3020	2" Horizontal - 2-Port	5-Scallop	15	31.43
600-3040	2" Vertical - 2-Port	5-Scallop	15	31.43



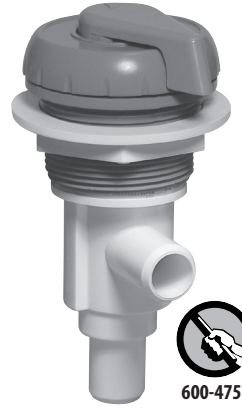


FEATURES:

- Shuts off 100% with a 180° turn
- Available in two body sizes: ¾" Socket or ¾" Shur-Grip
- Used for waterfalls, water features or neck jets
- Available in multiple colors



600-4787



600-4757



Deluxe 180° Shut Off Valves

Part No.	Description	Style	Case Quantity	List (US \$)
600-4750	Shur-Grip - ¾" SB x ¾" SB	Notched	100	23.98
600-4780	¾" S x ¾" S	Notched	100	23.98

FEATURES:

- Diverts water to one or two ports
- Top access for easy service
- 2" model wall fittings are sealed with o-rings
- 1" models available with one or two ports
- Available in multiple colors



600-4207



600-4347



600-4337

Top Access Diverter Valves

Part No.	Description	Style	Case Quantity	List (US \$)
600-4200	1" Vertical - 1-Port	Notched	90	22.29
600-4340	1" Vertical - 2-Port	Notched	90	22.29
600-4330	1" Horizontal - 2-Port	Notched	90	22.29
600-3010	2" Horizontal - 2-Port	Notched	15	31.43
600-3060	2" Vertical - 2-Port	Notched	15	31.43



600-3017



600-3067



Top Side Valves / 6-Spoke Valves

FEATURES:

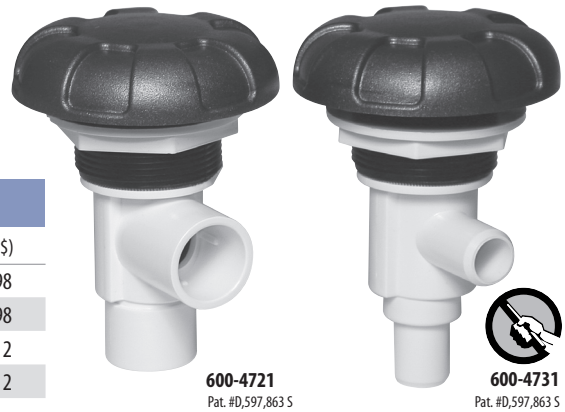
- Shuts off 100% with a 180° turn
- Available in two body sizes: ¾" Socket or ¾" Shur-Grip
- Used for waterfalls, water features or neck jets
- Available in multiple colors

Deluxe 180° Shut Off Valves

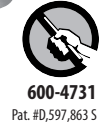
Part No.	Description	Style	Case Quantity	List (US \$)
600-4720	¾" S x ¾" S	6-Spoke	90	23.98
600-4730	Shur-Grip – ¾" SB x ¾" SB	6-Spoke	90	23.98
600-3190	¾" S x ¾" S	6-Spoke - Two Tone	90	25.12
600-3210	Shur-Grip – ¾" SB x ¾" SB	6-Spoke - Two Tone	90	25.12

SP

SP



600-4721
Pat. #D,597,863 S



600-4731
Pat. #D,597,863 S

FEATURES:

- 100% shut off
- Three different body styles to choose from
- Horizontal model is submersible
- Top access for easy servicing
- Works great for waterfalls and neck jets
- Sleeve allows for on/off adjustments with fewer turns



602-4440



600-4401
Pat. #D,597,863 S



600-4411
Pat. #D,597,863 S

On / Off Turn Valves

Part No.	Description	Style	Case Quantity	List (US \$)
600-4400	1" Vertical - Single Port	6-Spoke	100	22.61
600-4410	1" Vertical - Dual Port	6-Spoke	90	23.97
600-4420	1" Horizontal - Dual Port	6-Spoke	100	23.97
600-3180	1" Vertical - Dual Port	6-Spoke - Two Tone	90	23.56
602-4440	Sleeve (<i>low volume applications only</i>)	--	40	0.83



600-4420
Pat. #D,597,863 S

FEATURES:

- Diverts water to one or two ports
- Top access for easy service
- 2" model wall fittings are sealed with o-rings
- 1" models available with one or two ports
- Available in multiple colors



600-3611
Pat. #D,597,863 S



600-3601
Pat. #D,597,863 S



600-3621
Pat. #D,597,863 S

Top Access Diverter Valves

Part No.	Description	Style	Case Quantity	List (US \$)
600-3610	1" Vertical - 1-Port	6-Spoke	70	22.10
600-3600	1" Vertical - 2-Port	6-Spoke	70	22.10
600-3620	1" Horizontal - 2-Port	6-Spoke	70	23.14
600-3220	2" Horizontal - 2-Port	6-Spoke	15	31.43
600-3230	2" Vertical - 2-Port	6-Spoke	15	31.43
600-3150	1" Vertical - 1-Port	6-Spoke - Two Tone	90	23.05
600-3160	1" Vertical - 2-Port	6-Spoke - Two Tone	90	23.05
600-3170	1" Horizontal - 2-Port	6-Spoke - Two Tone	90	23.05
600-3140	2" Vertical - 2-Port	6-Spoke - Two Tone	15	33.35



600-3221
Pat. #D,597,863 S



600-3231
Pat. #D,597,863 S



FEATURES:

- Shuts off 100% with a 180° turn
- Available in two body sizes: ¾" Socket or ¾" Shur-Grip
- Used for waterfalls, water features or neck jets
- Available in multiple colors



600-3259DSG-1
Pat. #D,597,863 S

Deluxe 180° Shut Off Valves

Part No.	Description	Style	Case Quantity	List (US \$)
600-3280	¾" S x ¾" S	Revo - Two Tone	90	25.12
600-3250	Shur-Grip – ¾" SB x ¾" SB	Revo - Two Tone	90	25.12



FEATURES:

- 100% shut off
- Three different body styles to choose from
- Horizontal model is submersible
- Top access for easy servicing
- Works great for waterfalls and neck jets
- Sleeve allows for on/off adjustments with fewer turns



602-4440



600-3299DSG-7
Pat. #D,597,863 S

On / Off Turn Valves

Part No.	Description	Style	Case Quantity	List (US \$)
600-3290	1" Vertical - Dual Port	Revo - Two Tone	90	23.56
602-4440	Sleeve (<i>low volume applications only</i>)	--	40	0.83

FEATURES:

- Diverts water to one or two ports
- Top access for easy service
- 2" model wall fittings are sealed with o-rings
- 1" models available with one or two ports
- Available in multiple colors



600-3639DSG-1
Pat. #D,597,863 S



600-3339DSG-1
Pat. #D,597,863 S

Top Access Diverter Valves

Part No.	Description	Style	Case Quantity	List (US \$)
600-3630	1" Vertical - 1-Port	Revo - Two Tone	90	23.05
600-3330	1" Vertical - 2-Port	Revo - Two Tone	90	23.05
600-3340	1" Horizontal - 2-Port	Revo - Two Tone	90	23.05
600-3110	2" Vertical - 2-Port	Revo - Two Tone	15	33.35



600-3349DSG-1
Pat. #D,597,863 S



600-3119DSG-1
Pat. #D,597,863 S



Top Side Valves / "S" Style Valves

FEATURES:

- Shuts off 100% with a 180° turn
- Available in two body sizes: ¾" Socket or ¾" Shur-Grip
- Used for waterfalls, water features or neck jets
- Available in multiple colors

Deluxe 180° Shut Off Valves

Part No.	Description	Style	Case Quantity	List (US \$)
600-3300	¾" S x ¾" S	"S" Style - Two Tone	90	25.12
600-3260	Shur-Grip – ¾" SB x ¾" SB	"S" Style - Two Tone	90	25.12



600-3309DSG-1



600-3269DSG-PS

FEATURES:

- 100% shut off
- Three different body styles to choose from
- Horizontal model is submersible
- Top access for easy servicing
- Works great for waterfalls and neck jets
- Sleeve allows for on/off adjustments with fewer turns



602-4440

On / Off Turn Valves

Part No.	Description	Style	Case Quantity	List (US \$)
600-3310	1" Vertical - Dual Port	"S" Style - Two Tone	90	23.56
602-4440	Sleeve (<i>low volume applications only</i>)	--	40	0.83



600-3319DSGSTS

FEATURES:

- Diverts water to one or two ports
- Top access for easy service
- 2" model wall fittings are sealed with o-rings
- 1" models available with one or two ports
- Available in multiple colors



600-3249DSG-1



600-3279DSG-1

Top Access Diverter Valves

Part No.	Description	Style	Case Quantity	List (US \$)
600-3240	1" Vertical - 1-Port	"S" Style - Two Tone	90	23.05
600-3270	1" Vertical - 2-Port	"S" Style - Two Tone	90	23.05
600-3320	1" Horizontal - 2-Port	"S" Style - Two Tone	90	23.05
600-3030	2" Vertical - 2-Port	"S" Style - Two Tone	15	33.35



600-3329DSG-PS



600-3039DSG-1



FEATURES:

- Shuts off 100% with a 180° turn
- Available in two body sizes: ¾" Socket or ¾" Shur-Grip
- Used for waterfalls, water features or neck jets
- Available in multiple colors

Deluxe 180° Shut Off Valves

Part No.	Description	Style	Case Quantity	List (US \$)
600-4800	¾" S x ¾" S	Pin Wheel	100	25.12
600-4810	Shur-Grip – ¾" SB x ¾" SB	Pin Wheel	100	25.12



600-4819DSG-1

FEATURES:

- Diverts water to one or two ports
- Top access for easy service
- 2" model wall fittings are sealed with o-rings
- 1" models available with one or two ports
- Available in multiple colors

Top Access Diverter Valves

Part No.	Description	Style	Case Quantity	List (US \$)
600-4790	1" Vertical - 1-Port	Pin Wheel	100	23.05
600-4830	1" Vertical - 2-Port	Pin Wheel	100	27.40
600-4840	1" Horizontal - 2-Port	Pin Wheel	100	27.40
600-4770	2" Vertical - 2-Port	Pin Wheel	20	33.35



600-4779DSG-1



Top Side Valves / Humpback Valves

FEATURES:

- Shuts off 100% with a 180° turn
- Available in two body sizes: ¾" Socket or ¾" Shur-Grip
- Used for waterfalls, water features or neck jets
- Available in multiple colors



600-3709DSG-S



600-3719DSG-S

Deluxe 180° Shut Off Valves

Part No.	Description	Style	Case Quantity	List (US \$)
600-3700	¾" S x ¾" S	Humpback	--	25.12
600-3710	Shur-Grip – ¾" SB x ¾" SB	Humpback	--	25.12



FEATURES:

- 100% shut off
- Three different body styles to choose from
- Horizontal model is submersible
- Top access for easy servicing
- Works great for waterfalls and neck jets
- Sleeve allows for on/off adjustments with fewer turns



602-4440



600-4439DSG-S

On / Off Turn Valves

Part No.	Description	Style	Case Quantity	List (US \$)
600-4430	1" Vertical - Single Port	Humpback	20	22.61
602-4440	Sleeve (<i>low volume applications only</i>)	--	40	0.83

FEATURES:

- Diverts water to one or two ports
- Top access for easy service
- 2" model wall fittings are sealed with o-rings
- 1" models available with one or two ports
- Available in multiple colors



600-4449DSG-S

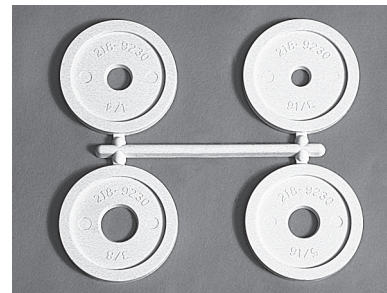
Top Access Diverter Valves

Part No.	Description	Style	Case Quantity	List (US \$)
600-4440	2" Vertical - 2-Port	Humpback	20	33.35



FEATURES:

- Restricts the amount of flow through On/Off Valves to any water feature
- Break off any one of the four different nozzle sizes for desired water flow
 - $\frac{3}{16}$ " – 4 GPM $\frac{1}{4}$ " – 7 GPM
 - $\frac{5}{16}$ " – 10 GPM $\frac{3}{8}$ " – 15 GPM

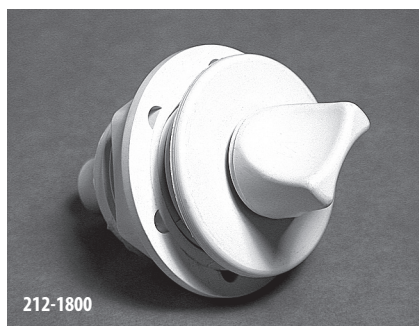


Water Restrictor Washer Tree

Part No.	Description	Case Quantity	List (US \$)
218-9230	Water Restrictor Washer Tree	90	1.22

Valve Gaskets

Part No.	Description	Case Quantity	List (US \$)
711-4310	1" Flat Gasket	100	0.42
711-4600	1 1/2" Gasket	100	0.58
711-3050	2" Gasket	100	0.69



Air Bleed Assembly

Part No.	Description	Case Quantity	List (US \$)
212-1800	$\frac{3}{8}$ " Barb	75	11.59