

***Pestalotiopsis* species on ornamental plants in Yunnan Province, China**

Yan Min Zhang¹, Sajeewa S. N. Maharachchikumbura^{2,3}, Qing Tian^{1,2,3} & Kevin D. Hyde^{1,2,3*}

¹ International Fungal Research and Development Centre, Key Laboratory of Resource Insect Cultivation & Utilization State Forestry Administration, The Research Institute of Resource Insects, Chinese Academy of Forestry, Kunming 650224, People's Republic of China

² Institute of Excellence in Fungal Research, Mae Fah Luang University, Tasud, Muang, Chiang Rai 57100, Thailand

³ School of Science, Mae Fah Luang University, Tasud, Muang, Chiang Rai 57100, Thailand

Zhang Y. M., Maharachchikumbura S. S. N., Tian Q. & Hyde K. D. (2013) *Pestalotiopsis* species on ornamental plants in Yunnan Province, China. – *Sydowia* 65 (1): 113–128.

Pestalotiopsis species were obtained from diseased leaves of ornamental plants collected in Yunnan Province, China. Morphological comparison and phylogenetic analysis of combined sequence data of the internal transcribed spacer (ITS), partial β -tubulin and partial translation elongation factor 1- α (*ef1*) showed that the isolates comprised seven species of *Pestalotiopsis*. Three species, *Pestalotiopsis ericacearum*, *P. gaultheriae* and *P. rhododendri*, are new to science and described herein.

Keywords: leaf blight, new species, pathogen, phylogeny.

Pestalotiopsis, an appendage-bearing conidial asexual form in the family Amphisphaeriaceae (Barr 1975, 1990, Kang *et al.* 1998, 1999), is widely distributed throughout tropical and temperate ecosystems (Maharachchikumbura *et al.* 2011). It is an important plant pathogenic genus (Yasuda *et al.* 2003; Das *et al.* 2010; Maharachchikumbura *et al.* 2011, 2013 a) with about 250 species, traditionally named according to their host associations (Guba 1961, Steyaert 1949, Venkatasubbaiah *et al.* 1991, Kohlmeyer & Volkmann-Kohlmeyer 2001). Many of these names are likely, however, to be erroneous as molecular data has shown that the genus needs revision (Cai *et al.* 2011; KoKo *et al.* 2011; Maharachchikumbura *et al.* 2011, 2012). *Pestalotiopsis* species have been also often isolated as endophytes (Liu *et al.* 2006; Hu *et al.* 2007; Wei *et al.* 2007; Watanabe *et al.* 2010; Botella & Diez 2011; Rocha *et al.* 2011, Debbab *et al.* 2011, 2012; Maharachchikumbura *et al.* 2012), or occur as saprobes (Wu *et al.* 1982, Agarwal & Chauhan 1988, Yanna *et al.* 2002, Hu *et*

* e-mails: kdhyde3@gmail.com

al. 2007, Liu *et al.* 2008, Maharachchikumbura *et al.* 2012). Endophytic species have been shown to produce a wide range of chemically novel diverse metabolites (Xu *et al.* 2010; Maharachchikumbura *et al.* 2011; Debbab *et al.* 2011, 2012; Maharachchikumbura *et al.* 2013 b).

We surveyed diseases of ornamental plants in Kunming Botanical Gardens and surrounding areas in Yunnan Province, China. We constantly observed *Pestalotiopsis* and related taxa associated with disease symptoms of ornamental plants. The aim of the current paper is to provide molecular characteristics of *Pestalotiopsis* species associated with ornamental plants, and three new species are also introduced.

Materials and methods

Sample collection and isolation

Fresh specimens of *Pestalotiopsis* species were obtained from leaf spots on living leaves of ornamental plants in Yunnan Province, China. To induce sporulation, diseased leaves were placed in sterilized Petri dishes with moistened sterile filter papers for 1 to 2 days after collection. Acervuli were rehydrated in water for examination and sectioning. Specimens were examined under a Leica MZ16A stereo microscope and observations and microphotographs were made under the light microscope (Nikon Ei800 and Leica DM3000); for some hyaline structures differential interference contrast microscopy was used. Hand sections (4–10 µm thick) were made with a sharp razor blade and sections were transferred to a drop of water, a drop of lactic acid or a drop of cotton blue for examination and photography. The morphology of fungal colonies was recorded following the method used by Maharachchikumbura *et al.* (2012). A single conidium culture technique was used to obtain pure colonies of the fungi following the method used by Chomnunti *et al.* (2011).

DNA extraction and PCR conditions

Biospin Fungus Genomic DNA Extraction Kit (Produced Bioer Technology Co., Hubei, China) was used to extract total genomic DNA directly from the acervuli. The ITS and 5.8S region of rDNA molecule was amplified using primer pairs ITS4 (5'-TCCTCCGCTTATTGATATGC-3') and ITS5 (5'-GGAA-GTAAAAGTCGTAACAAGG-3') (White *et al.* 1990), β -tubulin gene region was amplified with primer pairs BT2A (5'-GGTAACCAAATCGGTGCT-GCTTTC-3') and BT2B (5'-ACCCTCAGTGTAGTGACCCTTGGC-3') (Glass & Donaldson 1995, O'Donnell & Cigelnik 1997) and *ef1* was amplified using the primer pairs EF1-526F (5'-GTCGYGTYATYGGHCAYGT-3') and EF1-1567R (5'-ACHGTRCCRATACCACCRATCTT-3') (Rehner 2001). PCR was performed with the 25 µl reaction system consisting of 19.5 µl of double distilled water, 2.5 µl of 10× Taq buffer with MgCl₂, 0.5 µl of dNTP (10 mM each), 0.5 µl of each primer (10 µM), 0.25 µl Taq DNA polymerase (5 U/µl), 1.0 µl of DNA template. The thermal cycling program followed the method used by Maharachchikumbura *et al.* (2012, 2013 a).

Phylogenetic analysis

Raw sequence data were optimized following the method used by Maharachchikumbura *et al.* (2012). A maximum parsimony analysis (MP) was performed using PAUP (Phylogenetic Analysis Using Parsimony) v. 4.0b10 (Swofford 2002). Ambiguously aligned regions were excluded and gaps were treated as missing data. Trees were inferred using the heuristic search option with TBR branch swapping and 1000 random sequence additions. Maxtrees were set up to 5000, branches of zero length were collapsed and all multiple parsimonious trees were saved. Tree length [TL], consistency index [CI], retention index [RI], rescaled consistency index [RC], homoplasy index [HI], and log likelihood [-ln L] (HKY model) were calculated for trees generated under different optimality criteria. The robustness of the most parsimonious trees was evaluated by 100 bootstrap replications resulting from maximum parsimony analysis, each with ten replicates of random stepwise addition of taxa (Felsenstein 1985). The Kishino–Hasegawa tests (Kishino & Hasegawa 1989) were performed in order to determine whether the trees inferred under different optimality criteria were significantly different. Trees were viewed in Treeview (Page 1996).

Results

A phylogenetic tree was constructed using combined ITS, β -tubulin and *ef1* sequences of 30 isolates of *Pestalotiopsis*, with *Seiridium* sp. as the out-group taxon (Tab. 1). The aligned data matrix consisted of 2068 characters; 1452 characters were constant, 217 variable characters were parsimony-uninformative and 399 characters were parsimony-informative. The Kishino–Hasegawa (KH) test showed that first tree generated from parsimonious analysis was the best tree (length= 1324 steps, CI= 0.647, RI= 0.831, HI= 0.353, RC= 0.538).

In our study we found many species of *Pestalotiopsis* associated with diseases in ornamental plants and various disease symptoms including *Pestalotiopsis karstenii* on leaf spots on living leaves of *Camellia reticulata* (Fig. 1 a), *P. clavata* on leaf spots on living leaves of *Rhododendron delavayi* (Fig. 1 b), *P. clavispora* on leaf spots on living leaves of *Camellia japonica* (Fig. 1 c) and *P. trachicarpicola* on leaf spots on living leaves of *Podocarpus macrophyllus* (Fig. 1 d). Our identifications are based on morphology and three gene combined molecular data (Fig. 2).

Taxonomy

Pestalotiopsis ericacearum Y. M. Zhang, Maharachch. & K. D. Hyde, **sp. nov.**
– Fig. 3

Mycobank no.: MB 803235

Etymology. – The specific epithet is based on the host family *Ericaceae*, from which the fungus was isolated.

Tab. 1. *Pestalotiopsis* isolates used in this study.

| Taxon | Isolates | GenBank Accession Number | | |
|---|----------------|--------------------------|------------------|------------|
| | | ITS | β -tubulin | <i>ef1</i> |
| <i>P. adusta</i> (Ellis & Everh.) Steyaert | ICMP 6088 | JX399006 | JX399037 | JX399070 |
| <i>P. asiatica</i> Maharachch. & K. D. Hyde | MFLUCC 12-0286 | JX398983 | JX399018 | JX399049 |
| <i>P. camelliae</i> Y. M. Zhang, Maharachch. & K. D. Hyde | MFLUCC 12-0277 | JX399010 | JX399041 | JX399074 |
| <i>P. chinensis</i> Maharachch. & K. D. Hyde | MFLUCC 12-0273 | JX398995 | - | - |
| <i>P. chrysea</i> Maharachch. & K. D. Hyde | MFLUCC 12-0261 | JX398985 | JX399020 | JX399051 |
| <i>P. clavata</i> Maharachch. & K. D. Hyde | MFLUCC 12-0268 | JX398990 | JX399025 | JX399056 |
| <i>P. clavata</i> | IFRDCC 2394 | | | |
| <i>P. clavispora</i> | MFLUCC 12-0281 | JX398979 | JX399014 | JX399045 |
| <i>P. clavispora</i> | IFRDCC 2391 | | | |
| <i>P. diversiseta</i> Maharachch. & K. D. Hyde | MFLUCC 12-0287 | JX399009 | JX399040 | JX399073 |
| <i>P. ellipsospora</i> Maharachch. & K. D. Hyde | MFLUCC 12-0283 | JX399016 | JX399016 | JX399047 |
| <i>P. ericacearum</i> Y. M. Zhang, Maharachch. & K. D. Hyde | IFRDCC 2439 | | | |
| <i>P. foedans</i> (Sacc. & Ellis) Steyaert | CGMCC 3.9123 | JX398987 | JX399022 | JX399053 |
| <i>P. furcata</i> Maharachch. & K. D. Hyde | MFLUCC 12-0054 | JQ683724 | JQ683708 | JQ683740 |
| <i>P. gaultheriae</i> Y. M. Zhang, Maharachch. & K. D. Hyde | IFRD 411-014 | | | |
| <i>P. inflexa</i> Maharachch. & K. D. Hyde | MFLUCC 12-0270 | JX399008 | JX399039 | JX399072 |
| <i>P. intermedia</i> Maharachch. & K. D. Hyde | MFLUCC 12-0259 | JX398993 | JX399028 | JX399059 |
| <i>P. jesteri</i> Strobel, J. Yi Li, E. J. Ford & W. M. Hess | MFLUCC 12-0279 | JX399012 | JX399043 | JX399076 |
| <i>P. karstenii</i> (Sacc. & P. Syd.) Steyaert | IFRDC OP13 | | | |
| <i>P. linearis</i> Maharachch. & K. D. Hyde | MFLUCC 12-0271 | JX398992 | JX399027 | JX399058 |
| <i>P. rhododendri</i> Y. M. Zhang, Maharachch. & K. D. Hyde | IFRDCC 2399 | | | |
| <i>P. rosea</i> Maharachch. & K. D. Hyde | MFLUCC12-0258 | JX399005 | JX399036 | JX399069 |

| Taxon | Isolates | GenBank Accession Number | | |
|--|----------------|--------------------------|------------------|------------|
| | | ITS | β -tubulin | <i>ef1</i> |
| <i>P. samarangensis</i> Maharachch. & K. D. Hyde | MFLUCC 12-0233 | JQ968609 | JQ968610 | JQ968611 |
| <i>P. saprophyta</i> Maharachch. & K. D. Hyde | MFLUCC 12-0282 | JX398982 | JX399017 | JX399048 |
| <i>P. theae</i> | MFLUCC12-0055 | JQ683727 | JQ683711 | JQ683743 |
| <i>P. trachicarpicola</i> Y. M. Zhang & K. D. Hyde | OP068 | JQ845947 | JQ845945 | JQ845946 |
| <i>P. trachicarpicola</i> | IFRDCC 2403 | | | |
| <i>P. umberspora</i> Maharachch. & K. D. Hyde | MFLUCC 12-0285 | JX398984 | JX399019 | JX399050 |
| <i>P. unicolor</i> | MFLUCC 12-0276 | JX398999 | JX399030 | - |
| <i>P. verruculosa</i> Maharachch. & K. D. Hyde | MFLUCC 12-0274 | JX398996 | - | JX399061 |
| <i>Seiridium</i> sp. | SD096 | JQ683725 | JQ683709 | JQ683741 |

Description. – Associated with leaf blotch on living leaves of *Rhododendron arboretum* subsp. *delavayi*; initially black and rounded and later expanding to form a brown blotch. Sexual state not observed. Asexual state: *Acervuli* (200)250–500(600) μm in diam., black, epidermal to subepidermal in origin, separate or confluent, dehiscence irregular. Conidiophores reduced to conidiogenous cells. Conidiogenous cells hyaline, branched or unbranched at the base or above, cylindrical, lageniform or claviform. Conidia (15)16–20(21) \times 5–9 μm (av. = 18 \times 6.5 μm), fusiform, straight to slightly curved, 4-septate; basal cell conical, hyaline, thin and smooth-walled, 2–3 μm long (av. = 2.6 μm); with three median cells, doliform to cylindrical, constricted at the septa, concolorous, olivaceous, septa and periclinal walls darker than the rest of the cell, together (9)10–14(15) μm long (av. = 12 μm); second cell from base 4–6 μm (av. = 5 μm); third cell 4.5–6.5 μm (av. = 5.8 μm); fourth cell 4–6 μm (av. = 5 μm); apical cell hyaline, cylindrical, 4–6 μm long (av. = 5 μm); with 3–4 tubular apical appendages (mostly 3), arising from the apex of the apical cell, knobbed at the end, (19)20–43(45) μm long (av. = 32 μm), unequal in length; basal appendage present 2–9 μm (av. = 4 μm).

Holotype. – CHINA, Yunnan Province, Chuxiong, Zixishan, on leaf spots on living leaves of *Rhododendron delavayi*, February 2011, leg. Y. Zhang OP023, holotype IFRD 410-008.

Notes. – *Pestalotiopsis ericacearum* is a morphologically characteristic species and its distinctness is supported by molecular phylogeny (Fig. 1, Tab. 2). It has relatively short conidia (16–20 μm) compared to other species that have knobbed apical appendages; *P. kunmingensis* (33.8–46.8 μm), *P. pallidothaeae* (21.5–30.7 μm), *P. theae* (22–32 μm) and *P. tecomicola* (23–31.5 μm). In the phylogram (Fig. 2) it is clearly distinguished from *P. jesteri* and *P. karstenii* with high bootstrap support. No cultures were obtained for this species and thus DNA was directly extracted from the acervuli.

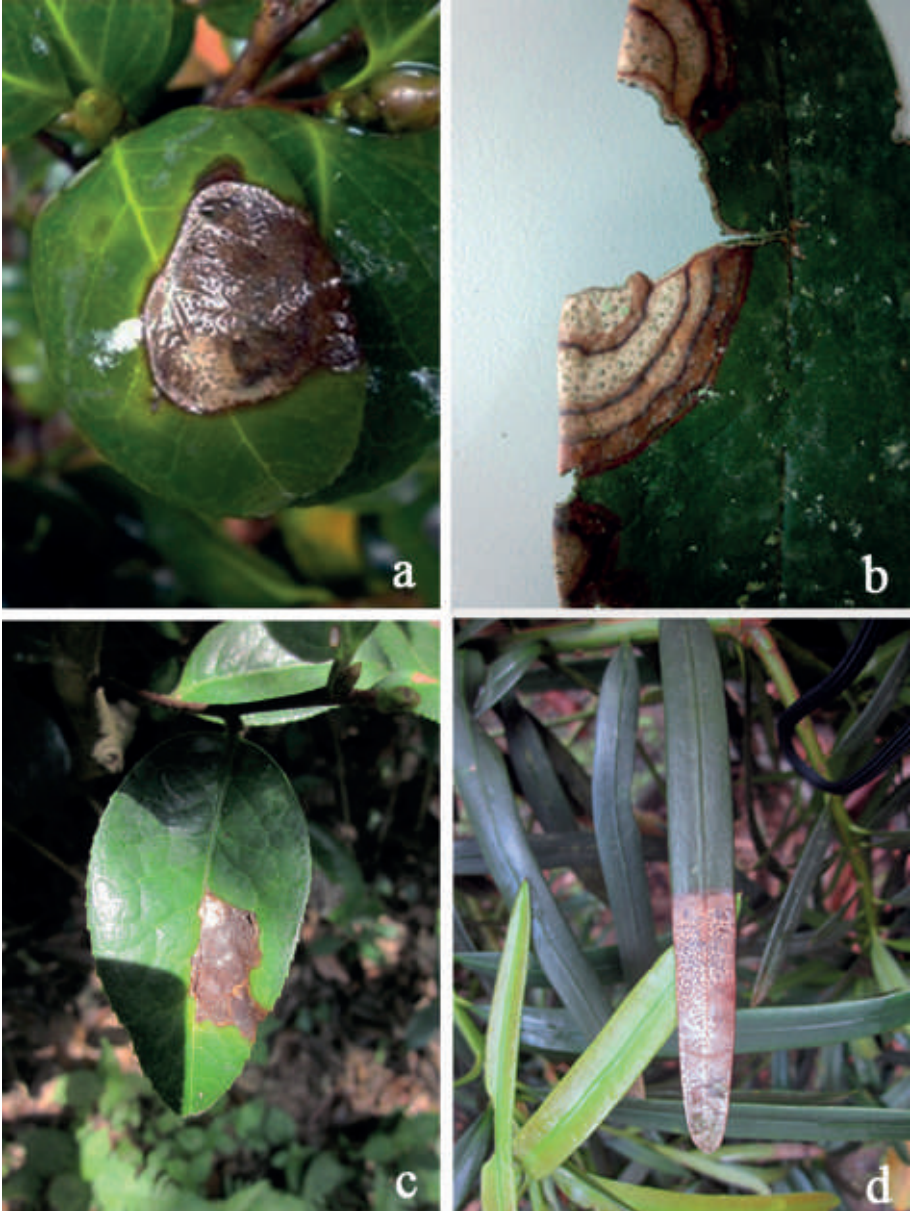


Fig. 1. **a** *Pestalotiopsis karstenii* on leaf spots on living leaves of *Camellia reticulata*. **b** *P. clavata* on leaf spots on living leaves of *Rhododendron delavayi*. **c** *P. clavispora* on leaf spots on living leaves of *Camellia japonica*. **d** *P. trachicarpicola* on leaf spots on living leaves of *Podocarpus macrophyllus*.

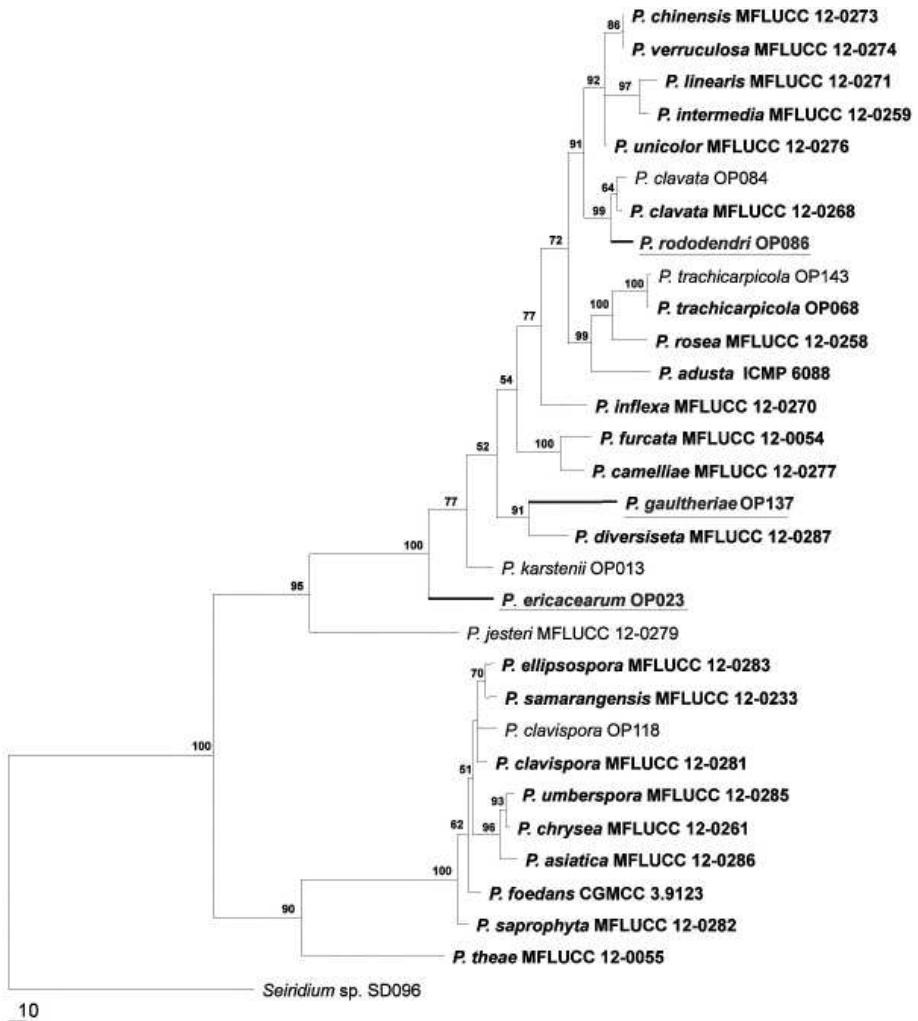


Fig. 2. Maximum parsimony phylogram generated from combined three genes (ITS, β -tubulin and *ef1*) analysis of species of *Pestalotiopsis*. Data were analyzed with random addition sequence, unweighted parsimony and treating gaps as missing data. *Seiridium* spp. placed as outgroup and type and ex-type sequences are in bold. New species are in bold and underlined.

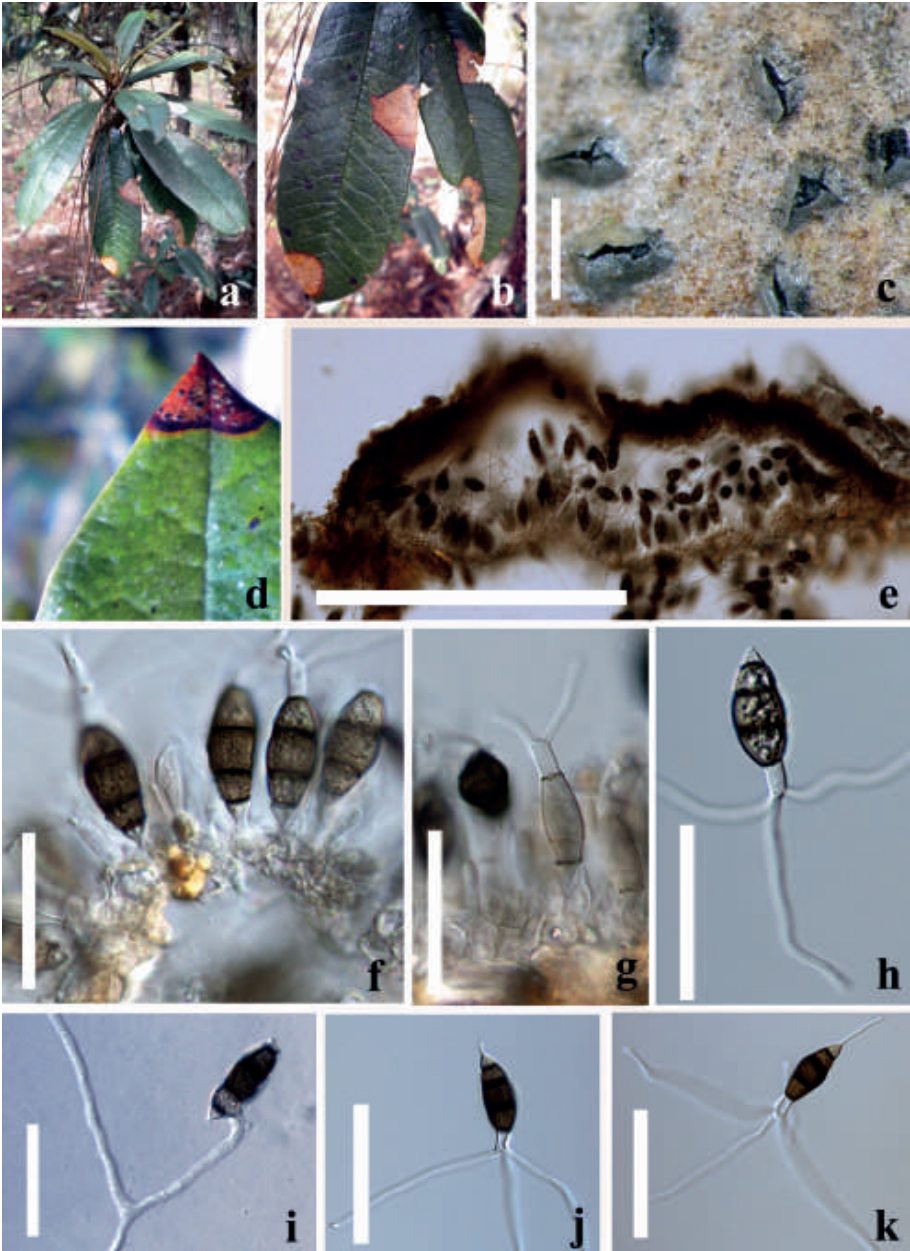


Fig. 3. *Pestalotiopsis ericacearum* (holotype). **a-d** *P. ericacearum* associated with leaf blotch on leaves of *Rhododendron delavayi*. **c** Acervuli, splitting irregularly. **e** Section of acervulus. **f, g** Conidiogenous cells. **h-k** Conidia with knobbed apical appendages. **i** Germination of spore. Bars: **c** 1000 μm , **e** 100 μm , **f-k** 20 μm .

Tab. 2. Synopsis of *Pestalotiopsis ericacearum* and related species.

| Species | <i>P. ericacearum</i> | <i>P. pallidothaeae</i> ^a | <i>P. theae</i> ^b | <i>P. kunmingensis</i> ^c | <i>P. tecomicola</i> ^d |
|--------------------|-------------------------|--------------------------------------|------------------------------|-------------------------------------|-----------------------------------|
| Conidia size (µm) | 16–20 × 5–9 | 21.5–30.7 × 5.4–7.7 | 22–32 × 5–8 | 33.8–46.8 × 7.5–10 | 23–31.5 × 7.5–8.5 |
| Median cells | concolorous, dark brown | concolorous, pale (light) brown | concolorous, dark brown | concolorous, brown | concolorous, pale brown to brown |
| Apical appendages: | 3 | 2–4 | 2–4 | 2–4 | 3 |
| Length (µm) | 17–40 | 12.3–39.2 | 25–50 | 14.3–52.7 | 11–16 |
| Tip | knobbed | knobbed | knobbed | knobbed | knobbed |
| Basal appendages | present | 10–20 | present | present, branched | present |

^aWatanabe *et al.* (2010); ^bGuba (1961); ^cWei & Xu (2004); ^dNag Raj (1993)

Pestalotiopsis gaultheriae Y. M. Zhang, Maharachch. & K. D. Hyde, **sp. nov.**
– Fig. 4

MycoBank no.: MB 803236

Etymology. – The specific epithet is based on the host genus *Gaultheria*, from which this fungus was isolated.

Description. – Associated with brown leaf spots on living leaves of *Gaultheria forrestii*. Sexual state not observed. Asexual state: Acervuli 100–310 µm in diam., grey to black, epidermal to subepidermal, separate or confluent, dehiscence irregular. Conidiophores reduced to conidiogenous cells. Conidiogenous cells hyaline, branched or unbranched at the base or above. Conidia fusoid to ellipsoid, straight to slightly curved, 4-septate, (20)23–31(33) × 7–9.5 µm (av. = 26.4 × 8.6 µm), with basal cell obconic, hyaline, thin-walled and verruculose, 3–5 µm long (av. = 4.9 µm); with three median cells, doliiform, concolorous when immature, becoming versicolourous when mature, septa and periclinal walls darker than the rest of the cell, wall rugose, together (14)15–20(21) µm long (av. = 17 µm); second cell from base 4–6 µm (av. = 4.8 µm); third cell 5–7 µm (av. = 5.8 µm); fourth cell 4–6 µm (av. = 5 µm); apical cell hyaline, cylindrical 4–5 µm long (av. = 4.5 µm); with 3 tubular appendages, swollen at the tip, arising from the apex of the apical cell, (13)15–50(54) µm long (av. = 35 µm); with basal appendage 2.5–4 µm long, rarely absent.

Holotype. – CHINA, Yunnan Province, Dehong, Mangshi, on leaf spots on living leaves of *Gaultheria forrestii*, September 2011, *leg.* Y. M. Zhang OP 137, holotype IFRD 411-014.

Notes. – *Pestalotiopsis gaultheriae* is a morphologically distinct species, which is also shown in its DNA phylogeny (Fig. 2). Species belongs to the clade comprising *P. gaultheriae* and *P. diversiseta* are concolorous. However, most interestingly, the two upper median cells in *P. gaultheriae* become darker than the lower median cell at maturity. *Pestalotiopsis gaultheriae* has long apical appendages (15–50 µm) when compared with species having similar conidial size, such as *P. diversiseta* (22–30 µm), *P. jesteri* (11–28 µm) and

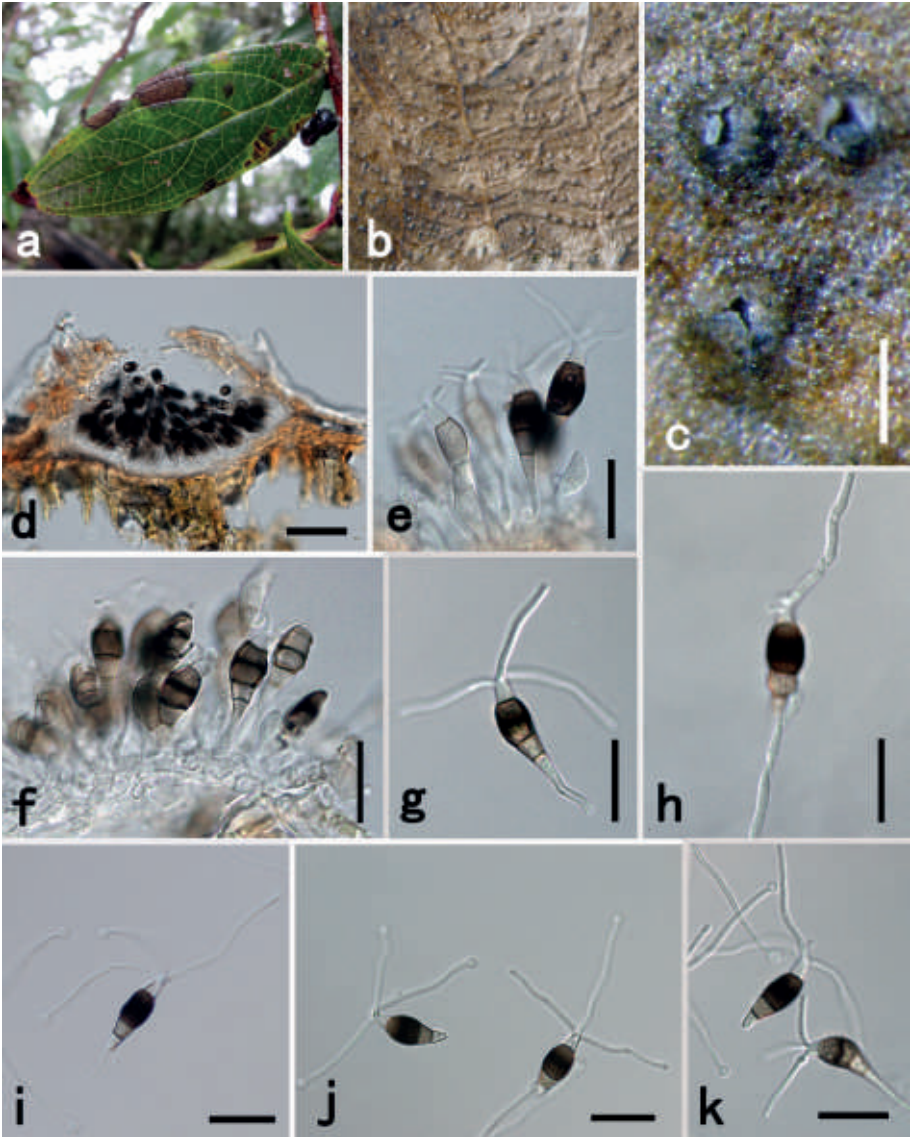


Fig. 4. *Pestalotiopsis gaultheriae* (holotype). **a** *P. gaultheriae* associated with leaf blight on leaves of *Gaultheria forrestii*. **b–c** Acervuli. **d** Section of acervular. **e–f** Conidiogenous cells. **h** Germination of spore. **g–k** Conidia with knobbed apical appendages. Bars: **c** 200 μm , **d** 50 μm , **e–k** 20 μm .

P. pallidothaeae (12–40 µm) (Tab. 3). In the phylogenetic tree it forms a sister clade with *P. diversiseta*, however, *P. gaultheriae* is clearly distinguished from *P. diversiseta* by having fewer apical appendages. Furthermore, in *P. diversiseta* apical appendages are sometimes branched and sometimes arise from different parts of the apical cell. No cultures were obtained for this species and thus DNA was directly extracted from the acervuli.

Pestalotiopsis rhododendri Y. M. Zhang, Maharachch. & K. D. Hyde, **sp. nov.**
– Fig. 5

MycoBank no.: MB 803237

Etymology. – The specific epithet is based on the host genus *Rhododendron*, from which the fungus was isolated.

Description. – Associated with dead parts of living leaves of *Rhododendron sinogrande*. Sexual state not observed. Asexual state: Acervuli (40)50–190(210) µm in diam., black, epidermal to subepidermal, separate or confluent, dehiscence irregular. Conidiophores indistinct. Conidiogenous cells discrete, simple, short, filiform. Conidia (16)18–27(29) × 5–8 µm (av. = 21 × 7 µm), fusiform, straight to slightly curved, 4-septate; basal cell conical to acute, hyaline, thin and smooth-walled, 3–5 µm long (av. = 4 µm); with three median cells, doliiform to cylindrical, constricted at the septa, concolorous, olivaceous, septa and periclinal walls darker than the rest of the cell, wall rugose, together (12)13–17(19) µm long (av. = 15 µm); second cell from base 4–6 µm (av. = 4.7 µm); third cell 4–6 µm (av. = 4.6 µm); fourth cell 4–6 µm (av. = 4.6 µm); apical cell hyaline, conical, 3–5 µm long (av. = 4 µm); with 3 tubular apical appendages, arising from the apex of the apical cell, knobbed at the end, (5)7–15(18) µm long (av. = 14 µm); basal appendage present 2–6 µm (av. = 4 µm).

Tab. 3. Synopsis of *Pestalotiopsis gaultheriae* and related species.

| <i>Species</i> | <i>P. gaultheriae</i> | <i>P. diversiseta</i> ^a | <i>P. jesteri</i> ^b | <i>P. pallidothaeae</i> ^c | <i>P. theae</i> ^c |
|--------------------|---------------------------|------------------------------------|-----------------------------------|--------------------------------------|------------------------------|
| Conidia size (µm) | 23–31 × 7–9.5 | 27–34 × 5.5–8 | 19–23 × 5–7 | 21.5–30.7 × 5.4–7.7 | 22–32 × 5–8 |
| Median cells | versicolorous, dark brown | concolorous, olivaceous | concolorous, pale brown to brown | concolorous, pale (light) brown | concolorous, dark brown |
| Apical appendages: | 3 | 3–5 (sometimes branched) | 3–4 | 2–4 | 2–4 |
| Length (µm) | 15–50 | 22–30, unequal | 11–28 | 12.3–39.2 | 25–50 |
| Tip | knobbed | knobbed | knobbed | knobbed | knobbed |
| Position | apex | top to middle | arising from juncture apical cell | apex | apex |
| Basal appendages | 2.5–4 | present | present | present | present |

^aMaharachchikumbura *et al.* (2012 a); ^bStrobel *et al.* (2000); ^cWatanabe *et al.* (2010)

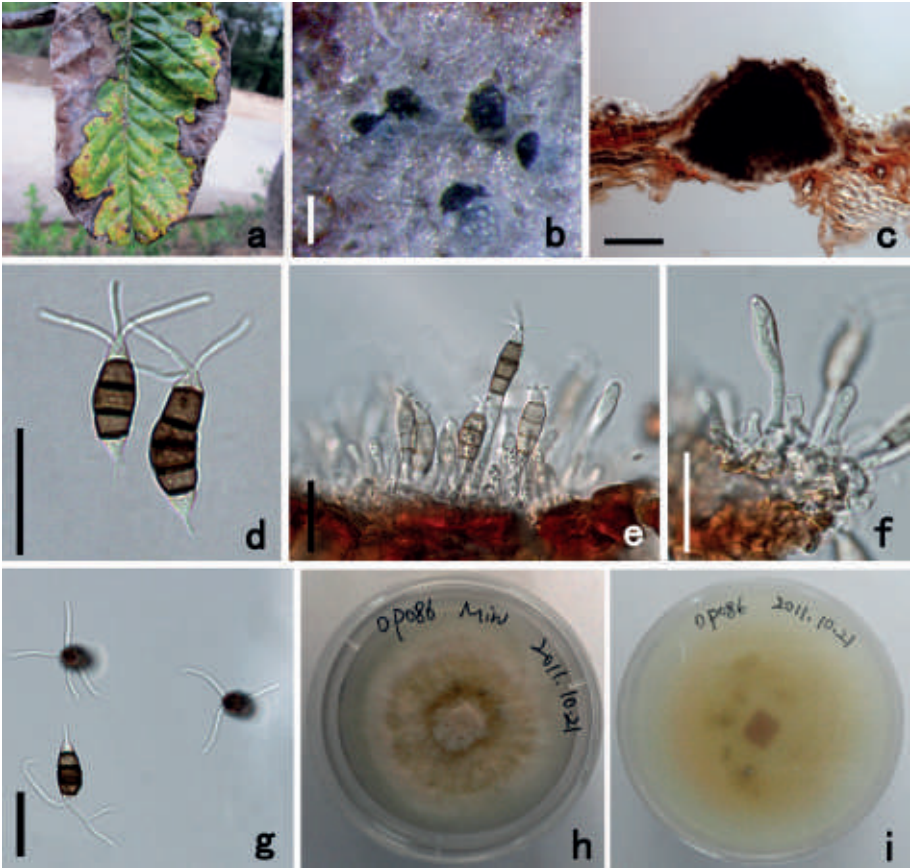


Fig. 5. *Pestalotiopsis rhododendri*. **a** *P. rhododendri* associated with leaf blight on leaves of *Rhododendron sinogrande*. **b** Acervuli, splitting irregularly. **c** Section of acervulus. **e, f** Conidiogenous cells. **d, g** Conidia. **h** *P. rhododendri* colony on PDA from above. **i** *P. rhododendri* colony on PDA from below. Bars: b–c 100 μ m, d–g 20 μ m.

Colonies on PDA reaching 7 cm diam. after 5 days at 25 °C, with entire edge, whitish and with time change in to pink, with aerial mycelium on surface; fruiting bodies black, gregarious; reverse of culture whitish to pale yellow.

Holotype. – CHINA, Yunnan Province, Chuxiong, Zixishan, on leaf spots on living leaves of *Rhododendron sinogrande*, May 2011, *leg.* Y. Zhang OP086, holotype IFRD 410-018, ex-type culture = IFRDCC 2399.

Notes. – *Pestalotiopsis rhododendri* (18–27 \times 5–8 μ m) has an overlapping conidial size with *P. clavata* (20–27 \times 6.5–8 μ m), but it has shorter apical appendages (7–15 μ m) than *P. clavata* (20–25 μ m) and it is also separated in DNA phylogeny (Fig. 2).

Discussion

In this phylogenetic study, we include 30 sequenced isolates of *Pestalotiopsis* with seven new strains collected from Yunnan Province, China. Based on morphological and molecular data, we determined that these Yunnan isolates comprise seven species of *Pestalotiopsis* and three are described here as new species.

Previously *P. funerea*, *P. guepini*, *P. langloisii*, *P. macrotricha* *P. sydowiana* *P. versicolor* have been reported to be associated with diseases in hardy ornamentals such as *Aralia elata*, *Calluna vulgaris*, *Camellia* sp., *Cupressus* sp., *Erica* sp., *Euonymus fortunei*, *Gardenia* sp., *Rhododendron* sp. and *Taxus* sp. (Pirone 1978, Sutton 1980, Hopkins & McQuilken 2000). Most of these studies indicate that *Pestalotiopsis* are not particularly host-specific and taxa may have the ability to infect a range of hosts (Hopkins & McQuilken 2000, Keith *et al.* 2006; Maharachchikumbura *et al.* 2011).

There are approximately 250 *Pestalotiopsis* names (Index Fungorum 2013). Most species were historically named according to the host from which they were first observed and there is no living type strain for most of these species. Thus, phylogenetic relationships within this large number of species is problematic. However, recently, new species have been introduced based on host occurrence, plus morphological and molecular data (Wei & Xu 2004; Watanabe *et al.* 2010; Strobel *et al.* 2000; Zhang *et al.* 2012; Maharachchikumbura *et al.* 2012, 2013 b), and this will lead to a better understanding of the genus.

Acknowledgements

The Research Institute of Resource Insects, Chinese Academy of Forestry provided financial support for Yan-Min Zhang to study her Masters degree. Funds for research were provided by the Grant for Essential Scientific Research of the National Non-profit Institute (no. CAFYBB2007002). Staff of the International Fungal Research and Development Centre at The Research Institute of Resource Insects, Chinese Academy of Forestry, are also thanked for providing help. Kevin D. Hyde thanks the National Research Council of Thailand (grant for *Pestalotiopsis* No: 55201020008) and the Mae Fah Luang university (grant for *Pestalotiopsis* No: 55101020004) for supporting his research. Eric H. C. McKenzie and Y. Wang are thanked for adding comments to improve the manuscript.

References

- Agarwal A. K., Chauhan S. (1988) A new species of the genus *Pestalotiopsis* from Indian soil. *Indian Phytopathology* **41**: 625–627.
- Barr M. E. (1975) *Pestalospaeria*, a new genus in the Amphisphaeriaceae. *Mycologia* **67**: 187–194. doi.org/10.2307/3758246.
- Barr M. E. (1990) Prodrumus to nonlichenized, pyrenomycetous members of class Hymenozomycetes. *Mycotaxon* **39**: 43–184.

- Botella L., Diez J. J. (2011) Phylogenetic diversity of fungal endophytes in Spanish stands of *Pinus halepensis*. *Fungal Diversity* **47**: 9–18. doi.org/10.1007/s13225-010-0061-1.
- Cai L., Giraud T., Zhang N., Begerow D., Cai G., Shivas R. G. (2011) The evolution of species concepts and species recognition criteria in plant pathogenic fungi. *Fungal Diversity* **50**: 121–133. doi.org/10.1007/s13225-011-0127-8.
- Chomnunti P., Schoch C. L., Aguirre-Hudson B., Ko Ko T. W., Hongsanan S., Jones E. B. G., Kodsueb R., Phookamsak R., Chukeatiroe E., Bahkali A. H., Hyde K. D. (2011) Capnodiaceae. *Fungal Diversity* **51**: 103–134. doi.org/10.1007/s13225-011-0145-6.
- Das R., Chutia M., Das K., Jha D. K. (2010) Factors affecting sporulation of *Pestalotiopsis disseminata* causing grey blight disease of *Persea bombycina* Kost., the primary food plant of muga silkworm. *Crop Protection* **29**: 963–968. doi.org/10.1016/j.cropro.2010.05.012.
- Debbab A., Aly A. H., Proksch P. (2011) Bioactive secondary metabolites from endophytes and associated marine derived fungi. *Fungal Diversity* **49**: 1–12. doi.org/10.1007/s13225-011-0114-0.
- Debbab A., Aly A. H., Proksch P. (2012) Endophytes and associated marine derived fungi – ecological and chemical perspectives. *Fungal Diversity* **57**: 45–83. doi.org/10.1007/s13225-012-0191-8.
- Felsenstein J. (1985) Confidence limits on phylogenies: an approach using the bootstrap. *Evolution* **39**: 783–791. doi.org/10.2307/2408678.
- Glass N. L., Donaldson G. C. (1995) Development of primer sets designed for use with the PCR to amplify conserved genes from filamentous ascomycetes. *Applied and Environmental Microbiology* **61**: 1323–1330.
- Guba E. F. (1961) Monograph of *Pestalotia* and *Monochaetia*. Harvard University Press, Cambridge.
- Hopkins K. E., McQuilken M. P. (2000) Characteristics of *Pestalotiopsis* associated with hardy ornamental plants in the UK. *European Journal of Plant Pathology* **106**: 77–85. doi.org/10.1023/A: 1008776611306.
- Hu H. L., Jeewon R., Zhou D. Q., Zhou T. X., Hyde K. D. (2007) Phylogenetic diversity of endophytic *Pestalotiopsis* species in *Pinus armandii* and *Ribes* spp.: evidence from rDNA and α -tubulin gene phylogenies. *Fungal Diversity* **24**: 1–22.
- Index Fungorum (2013) <http://www.indexfungorum.org>.
- Kang J. C., Kong R. Y. C., Hyde K. D. (1998) Studies on the Amphisphaeriales 1. Amphisphaeriaceae (sensu stricto) and its phylogenetic relationships inferred from 5.8S rDNA and ITS2 sequences. *Fungal Diversity* **1**: 147–157.
- Kang J. C., Hyde K. D., Kong R. Y. C. (1999) Studies on Amphisphaeriales: the Amphisphaeriaceae (sensu stricto). *Mycological Research* **103**: 53–64. doi.org/10.1017/S0953756298006650.
- Keith L. M., Velasquez M. E., Zee F. T. (2006) Identification and characterization of *Pestalotiopsis* spp. causing scab disease of guava, *Psidium guajava* in Hawaii. *Plant Disease* **90**: 16–23. doi.org/10.1094/PD-90-0016.
- Kishino H., Hasegawa M. (1989) Evaluation of the maximum likelihood estimate of the evolutionary tree topologies from DNA sequence data. *Journal of Molecular Evolution* **29**: 170–179. doi.org/10.1007/BF02100115.
- Kohlmeyer J., Volkmann-Kohlmeyer B. (2001) Fungi on *Juncus roemerianus*. 16. More new coelomycetes, including *Tetranacriella*, gen. nov. *Botanica Marina* **44**: 147–156. doi.org/10.1515/BOT.2001.020.
- Ko Ko T., Stephenson S. L., Bahkali A. H., Hyde K. D. (2011) From morphology to molecular biology: can we use sequence data to identify fungal endophytes? *Fungal Diversity* **50**: 113–120. doi.org/10.1007/s13225-011-0130-0.
- Liu A. R., Wu X. P., Xu T., Guo L. D., Wei J. G. (2006) Notes on endophytic *Pestalotiopsis* from Hainan, China. *Mycosystema* **25**: 389–397.

- Liu L., Liu S., Jiang L., Chen X., Guo L., Che Y. (2008) Chloropupukeananin, the first chlorinated pupukeanane derivative, and its precursors from *Pestalotiopsis fici*. *Organic Letters* **10**: 1397–1400. doi.org/10.1021/ol800136t.
- Maharachchikumbura S. S. N., Guo L. D., Chukeatirote E., Bahkali A. H., Hyde K. D. (2011) *Pestalotiopsis*-morphology, phylogeny, biochemistry and diversity. *Fungal Diversity* **50**: 167–187. doi.org/10.1007/s13225-011-0125-x.
- Maharachchikumbura S. S. N., Guo L. D., Cai L., Chukeatirote E., Wu W. P., Sun X., Crous P. W., Bhat D. J., Hyde K. D. (2012) A multi-locus backbone tree for *Pestalotiopsis*, with a polyphasic characterization of 14 new species. *Fungal Diversity* **56**: 95–129. doi.org/10.1007/s13225-012-0198-1.
- Maharachchikumbura S. S. N., Guo L. D., Chukeatirote E., McKenzie E. H. C., Hyde K. D. (2013 a) A destructive new disease of *Syzygium samarangense* in Thailand caused by the new species *Pestalotiopsis samarangensis*. *Tropical Plant Pathology* (in press). doi.org/10.1590/S1982-56762013005000002.
- Maharachchikumbura S. S. N., Chukeatirote E., Guo L. D., Crous P. W., McKenzie E. H. C., Hyde K. D. (2013 b) *Pestalotiopsis* species associated with *Camellia sinensis* (tea). *Mycotaxon* (in press).
- Nag Raj, T. R. 1993. *Coelomycetous anamorphs with appendage-bearing conidia*. Canada, Waterloo, Mycologue Publications.
- O'Donnell K., Cigelnik E. (1997) Two divergent intragenomic rDNA ITS2 types within a monophyletic lineage of the fungus *Fusarium* nonorthologous. *Molecular Phylogenetics and Evolution* **7**: 103–116. doi.org/10.1006/mpev.1996.0376.
- Page R. D. M. (1996) TREEVIEW: an application to display phylogenetic trees on personal computers. *Computer Applications in the Biosciences* **12**: 357–358.
- Pirone P. P. (1978) *Diseases and pests of ornamental plants*. Wiley Interscience, New York.
- Rehner S. A. (2001) Primers for elongation factor 1-alpha (EF1-alpha). [http://ocid.nacse.org/research/deep hyphae/EF1primer.pdf](http://ocid.nacse.org/research/deep%20hyphae/EF1primer.pdf).
- Rocha A. C. S., Garcia D., Uetanabaro A. P. T., Carneiro R. T. O. (2011) Foliar endophytic fungi from *Hevea brasiliensis* and their antagonism on *Microcyclus ulei*. *Fungal Diversity* **47**: 75–84. doi.org/10.1007/s13225-010-0044-2.
- Steyaert R. L. (1949). Contributions à l'étude monographique de *Pestalotia* de Not. Et *Monochaetia* Sacc. (*Truncatella* gen. nov. et *Pestalotiopsis* gen. nov.). *Bulletin du Jardin Botanique de l'Etat à Bruxelles* **19**: 285–354.
- Strobel G., Li J. Y., Ford E., Worapong J., Gary I. B., Hess W. M. (2000) *Pestalotiopsis jesteri*, sp. nov. an endophyte from *Fragraea bodenii*, a common plant in the southern highlands of Papua New Guinea. *Mycotaxon* **76**: 257–266.
- Sutton B. C. (1980) *The coelomycetes: fungi imperfecti with pycnidia, acervular and stromata*. Commonwealth Mycological Institute, Kew.
- Swofford D. L. (2002) *PAUP* 4.0: phylogenetic analysis using parsimony (* and other methods)*. Sinauer Associates, Sunderland.
- Venkatasubbaiah P., Grand L. F. and Van Dyke C. G. (1991). A new species of *Pestalotiopsis* on *Oenothera*. *Mycologia* **83**: 511–513. doi.org/10.2307/3760363.
- Watanabe K., Motohashi K., Ono Y. (2010) Description of *Pestalotiopsis pallidotheae*: a new species from Japan. *Mycoscience* **51**: 182–188. doi.org/10.1007/s10267-009-0025-z.
- Wei J. G., Xu T. (2004) *Pestalotiopsis kunmingensis*, sp. nov., an endophyte from *Podocarpus macrophyllus*. *Fungal Diversity* **15**: 247–254.
- Wei J. G., Xu T., Guo L. D., Liu A. R., Zhang Y., Pan X. H. (2007) Endophytic *Pestalotiopsis* species associated with plants of *Podocarpaceae*, *Theaceae* and *Taxaceae* in southern China. *Fungal Diversity* **24**: 55–74.
- White T. J., Bruns T., Lee S., Taylor J. W. (1990) Amplification and direct sequencing of fungal ribosomal RNA genes for phylogenetics. In: PCR protocols: a guide to methods and applications (eds. Innis M. A., Gelfand D. H., Sninsky J. J., White T. J.), Academic Press, New York: 315–322.

- Wu C. G., Tseng H. Y., Chen Z. C. (1982) Fungi inhabiting on *Schoenoplectus triqueter* (L.) Palla (I). *Taiwania* **27**: 35–38.
- Xu J., Ebada S. S., Proksch P. (2010) *Pestalotiopsis* a highly creative genus: chemistry and bioactivity of secondary metabolites. *Fungal Diversity* **44**: 15–31. doi.org/10.1007/s13225-010-0055-z.
- Yanna Ho W. H., Hyde K. D. (2002) Fungal succession on fronds of *Phoenix hanceana* in Hong Kong. *Fungal Diversity* **10**: 185–211.
- Yasuda F., Kobayashi T., Watanabe H. (2003) Addition of *Pestalotiopsis* spp. to leaf spot pathogens of Japanese persimmon. *Journal of General Plant Pathology* **69**: 29–32. doi.org/10.1007/s10327-002-0011-1.
- Zhang Y., Maharachchikumbura S. S. N., McKenzie E. H. C., Hyde K. D. (2012) A novel species of *Pestalotiopsis* causing leaf spots of *Trachycarpus fortunei*. *Cryptogamie Mycologie* **33**: 311–318.

(Manuscript accepted 16 Feb 2013; Corresponding Editor: I. Krisai-Greilhuber)

ZOBODAT - www.zobodat.at

Zoologisch-Botanische Datenbank/Zoological-Botanical Database

Digitale Literatur/Digital Literature

Zeitschrift/Journal: [Sydowia](#)

Jahr/Year: 2013

Band/Volume: [65](#)

Autor(en)/Author(s): Zhang Yan-Min, Maharachchikumbura Sajeewa S.N.,
Tian Qing, Hyde Kevin D.

Artikel/Article: [Pestalotiopsis species on ornamental plants in Yunnan Province, China 113-128](#)